

Community Update

Spring Farm Parkway Stage 2

August 2025



Spring Farm Parkway Stage 2 will complete a vital east-west link that supports the Greater Macarthur Growth Area. It will meet the needs of a growing population by connecting future and existing residential and industrial developments to the Hume Motorway.

This project is now moving through the next stage of planning. This stage will see the concept design develop and the delivery of the environmental assessment.

In this update

Find out about:

- Project status
- Project scope
- Onsite activity
- Milestone tracker
- Stage 1 update



Transport for NSW acknowledges the Dharawal People as the Traditional Custodians of the surrounding lands and waterways, and also recognise the Dharug and Gundungurra Nations as the Traditional Custodians of the lands on which we work and pay respects to Elders past and present.



Project status

In June 2024, the Australian and NSW Governments committed \$15 million to advance planning for Spring Farm Parkway Stage 2. The 2025–26 NSW Budget allocated \$12.4 million over the next four years towards this development.

Transport will use this funding to carry out detailed investigations along the proposed route, complete environmental assessments, and develop the concept design.

Stage 2 will complete the missing link between the newly opened Spring Farm Parkway Stage 1 and Liz Kernohan Drive.

Some key benefits

Alternate east west link

connecting Camden Bypass, Hume Motorway and Menangle Road

Better access

to new residential and employment precincts

Shorter journey times

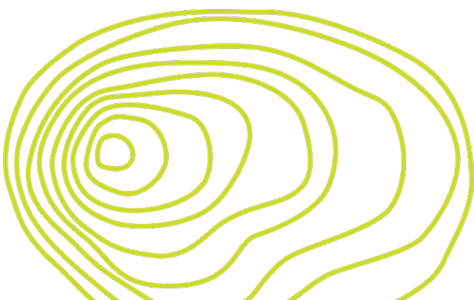
for motorists, including freight

New shared user paths

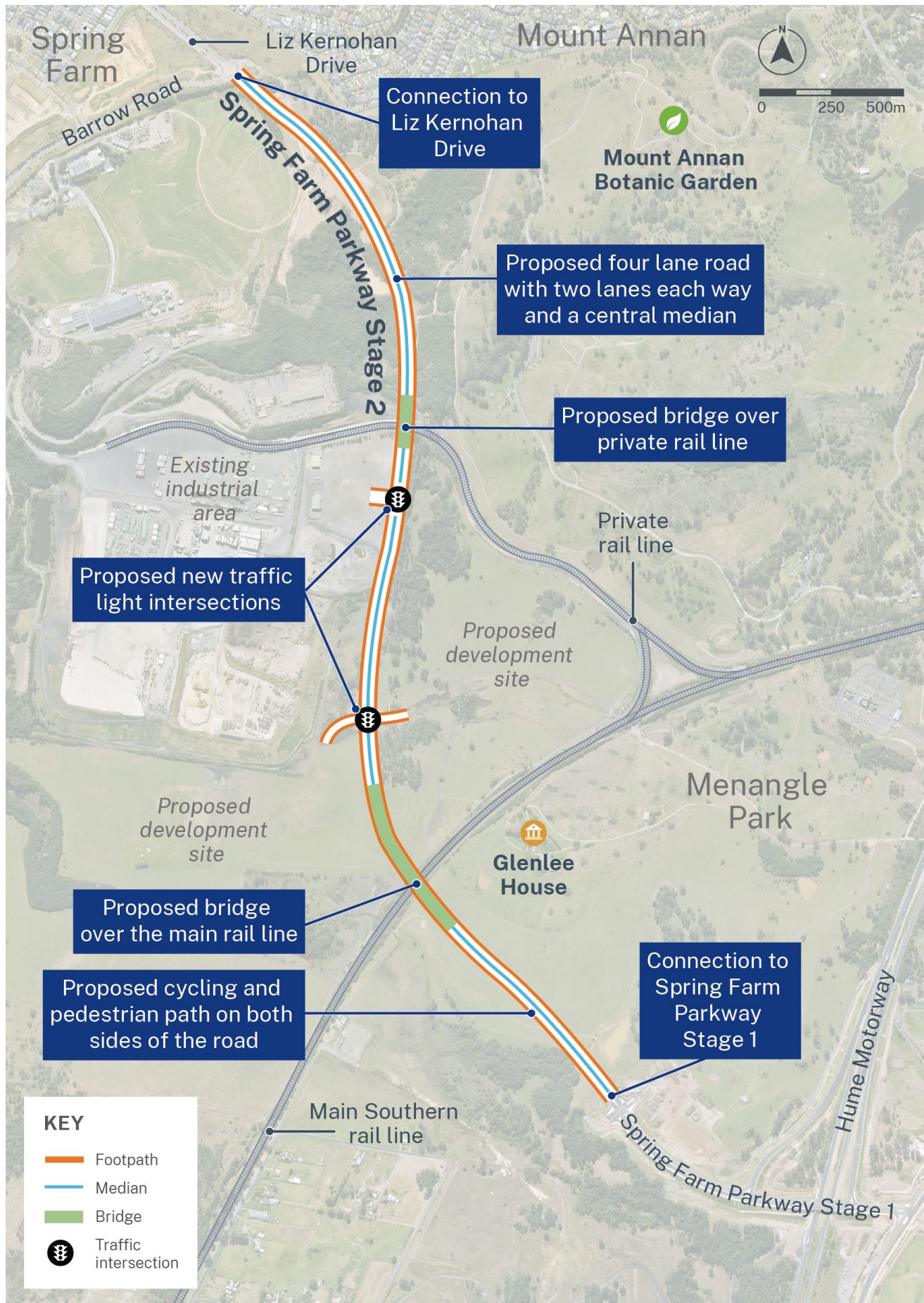
to support travel mode choice and safety for pedestrians and cyclists

New access for freight trucks

to Southern Sydney Freight Line terminal



Project scope



The above design is subject to change as we progress through the concept design

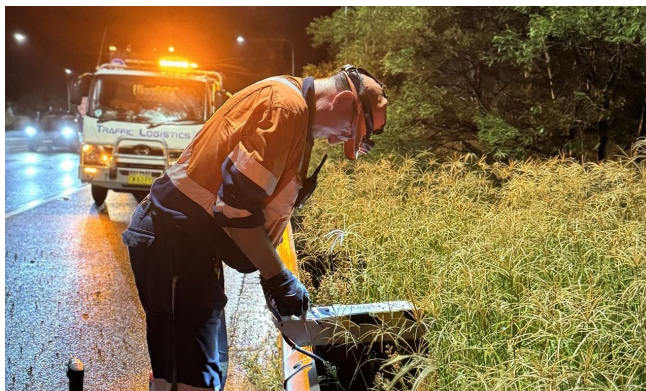
Recent activity



Survey work

We're carrying out detailed surveys along the proposed route to support planning for the project. Our team is measuring land features, mapping the area's shape, scanning underground utilities in 3D, and placing survey markers where needed.

We will also undertake biodiversity surveys to check on local plant and animal life. This helps us understand the natural environment so we can design the project in a way that protects important habitats and supports local ecosystems.



Traffic analysis

In February 2025, we arranged traffic monitoring on several key roads in the area to support planning for Stage 2. The monitoring involved intersection cameras and traffic counting tubes along the Hume Motorway, Narellan Road, and Camden Bypass.

This helped us gather useful data on how people travel through the area — such as their journey routes, wait times, and the number of vehicles using each road. These insights play an important role in shaping our plans for the next stage of the project.



Ground testing

In March 2025, our crews explored key parts of the planned route to learn more about underground conditions. They dug small test pits, drilled bore holes, and took soil samples to get a clearer picture of what lies beneath.

This information plays an important role in shaping the project's design — helping engineers choose the most suitable materials, layout, and approach based on the ground's makeup. By understanding the site early, we can design smarter, safer solutions tailored to the local environment.



Key stakeholder consultations

We're currently speaking with key property owners along the planned route as we start work on the concept design. Our team is also meeting with local Councils and government agencies to make sure our planning matches local priorities and takes into account any site-specific challenges.

These conversations help us gather valuable insights that shape the design and ensure the project fits well within the surrounding area.



Milestone tracker



Stage 1 update

Stage 1 of Spring Farm Parkway opened to traffic on 28 August 2024. This first stage of the key east-west link connects the Hume Motorway to Menangle Road and features a new interchange with City-facing on and off ramps. Local residents have enthusiastically welcomed this milestone, praising the improved journey times and expressing strong interest in the progress of the next stage.

Key updates:

- Transport removed the Stage 1 site office in late March 2025.
- Campbelltown Council now manages the new footpaths built as part of Stage 1. Please direct any future enquiries about these footpaths to the Council.
- Starting from September 2025, Transport will operate several permanent Variable Message Signs on the Hume Highway and Spring Farm Parkway. These signs will give motorists advance warnings about road conditions.

Contact us



Project Infoline **1800 325 146**



springfarmparkway2@transport.nsw.gov.au



Visit the online portal go to
www.transport.nsw.gov.au/sfp2



For the latest traffic updates:
Call 132 701, visit livetraffic.com or download the app Live Traffic NSW



Interpreter service

For languages other than English call **131 450**
Arabic • Greek • Hindi • Mandarin • Vietnamese

لطلب خدمة الترجمة الشفهية للغات غير الإنجليزية اتصل
بالرقم **131 450**

Για υπηρεσίες διερμηνείας σε άλλες γλώσσες εκτός από
τα Αγγλικά καλέστε το **131 450**

अंग्रेज़ी के अतिरिक्त अन्य भाषाओं के लिए दुभाषिया सेवा
131 450 पर कॉल करें

获取英语以外的其他语言口译协助服务可以致电**131 450**

Để có dịch vụ thông ngôn cho các ngôn ngữ khác tiếng
Anh, gọi số **131 450**

www.transport.nsw.gov.au/privacy-statement#Your_Privacy