

Sydney Terminal Building Revitalisation Stage 1

Community Notification

August 2025



Transport for NSW acknowledges the Gadigal people of the Eora Nation as the Traditional Custodians of the lands on which we work and pays respect to Elders past and present.

Stage 1 of the Sydney Terminal Building Revitalisation project is the first step in revitalising Central Station, improving public space, safety and connectivity.

Stage 1 focuses on upgrading Eddy Avenue Plaza, Eddy Avenue Colonnade and the Eastern Terrace and will include:

- Upgrades to Eddy Avenue Plaza including landscaping, lighting and wayfinding
- A new retail building and updates to existing retail spaces
- New balustrades and awning on the Eastern Terrace
- Upgrades to paving and ceiling finishes within the Eddy Avenue Colonnade.

Work completed to date

We have completed the following work during June and July:

- Site establishment in Eddy Avenue Plaza
- Installation of site screening and hoarding
- Removal of seven existing trees (these will be replaced during landscape work)
- Removal of existing fixtures and light poles in Eddy Avenue Plaza
- Demolition and removal of existing retail buildings in Eddy Avenue Plaza
- Heritage brick removal for reuse in the new Eddy Avenue Plaza design.

What work are we doing now?

From August 2025 we will commence the following construction activities within Eddy Avenue Plaza:

- Removal of the existing vehicle ramp from Eddy Avenue Plaza to the station concourse level
- Installation of rock anchors along the adjoining rail corridor wall
- Relocation of fire hydrant boosters and associated utilities
- Excavation work to level the plaza surface area.

When and where we'll be working

Most of our work will take place during standard work hours:

- **7am to 6pm, Monday to Friday**
- **8am to 6pm on Saturday.**

Out of hours work

We will be regularly doing work at night between 2am and 4am as we need to access the site when the light rail is not in operation.

This work is generally not noisy and will include:

- Delivery of machines, equipment and materials for construction activities
- Trucks entering and leaving the site at Eddy Avenue Plaza.

We will notify nearby residents and businesses in advance if additional out of hours work is required.

Managing our impacts

We aim to minimise impacts to the community by:

- Fencing the work area for safety and security
- Using water sprayers to minimise dust
- Reducing our noise as much as possible by turning off equipment when not in use
- Using quieter equipment where possible
- Targeted lighting to minimise light spill
- Providing traffic controllers and signage to direct road users, cyclists and pedestrians.

Keeping you updated

We will continue to provide updates on our project webpage and via email as well as construction updates to properties directly impacted by our work.

Visit our webpage at

www.transport.nsw.gov.au/stbrp to register to receive email updates or contact us on the details below.

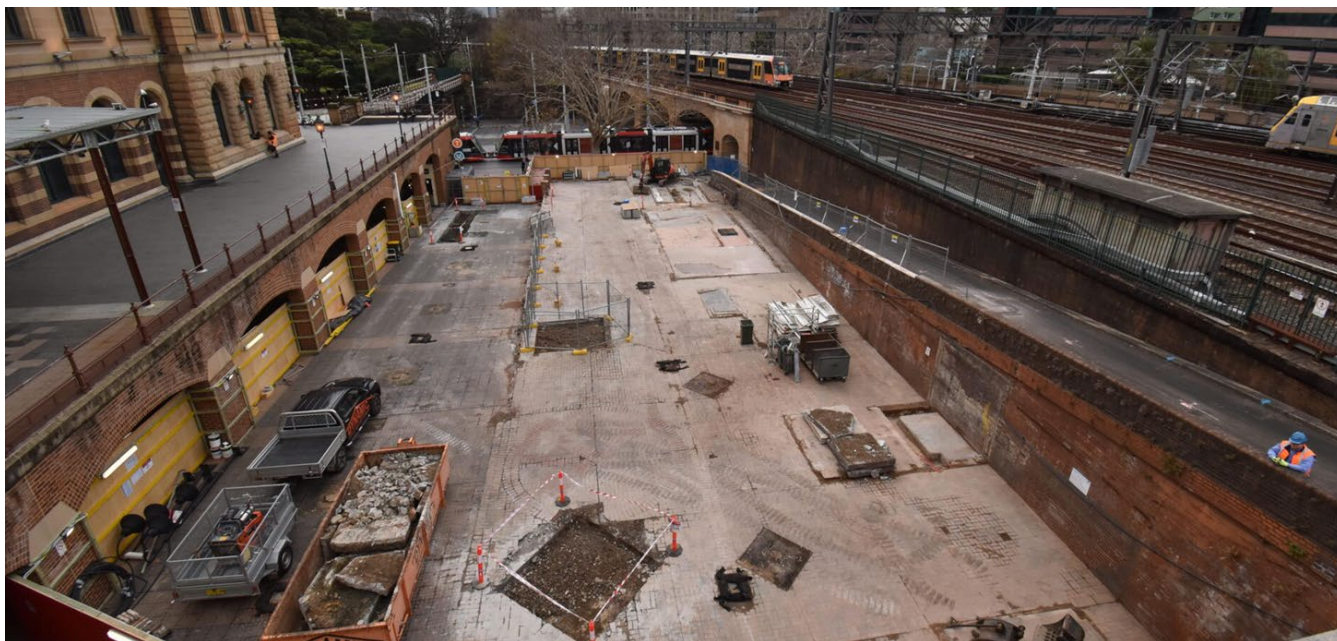


Image: Eddy Avenue Plaza construction site

Contact us



24-hour Project and Construction Response Line **1800 684 490**



projects@transport.nsw.gov.au



STBRP project
Transport for NSW, Community and Place
PO Box K659, Haymarket 1240



Scan the QR code to visit the webpage
transport.nsw.gov.au/stbrp



Interpreter service

For languages other than English call **131 450**
Arabic • Greek • Hindi • Mandarin • Vietnamese

لطلب خدمة الترجمة الشفهية للغات غير الإنجليزية اتصل
بالرقم **131 450**

Για υπηρεσίες διερμηνείας σε άλλες γλώσσες εκτός από
τα Αγγλικά καλέστε το **131 450**

अंग्रेज़ी के अतिरिक्त अन्य भाषाओं के लिए दुभाषिया सेवा
131 450 पर कॉल करें

获取英语以外的其他语言口译协助服务可以致电**131 450**

Để có dịch vụ thông ngôn cho các ngôn ngữ khác tiếng
Anh, gọi số **131 450**

www.transport.nsw.gov.au/privacy-statement#Your_Privacy