

Out of hours work in Singleton as bypass progresses

Singleton Bypass

April-June 2025



Transport for NSW acknowledges the Wonnarua/Wanaruah people as the Traditional Custodians of the lands on which we work and pays respect to Elders past and present.

The Australian and NSW Governments have invested a total of \$700 million to build the Singleton Bypass. Major construction work on the bypass started in early September 2024.

What work are we doing?

The out of hours work will involve earthwork, asphaltting, adjustments to road line marking, drainage installation, geotechnical investigation work, utility works, placement of temporary roadside barriers and concrete. Delivery of concrete bridge girders and headstocks and placement using mobile cranes will also occur.

When and where we'll be working

To minimise traffic impact, work will be carried out outside of standard construction hours from the **beginning of April to the end of June 2025**, between **6pm and 7am** on **weeknights**, weather permitting. No work will be carried out on Saturday and Sunday nights.

Work will be carried out along the New England Highway from 300 metres north of Range Road at Whittingham to 1.8 kilometres north of Rixs Creek Lane at Rixs Creek. Works will also be carried out from Putty Road to New England Highway, including Carrington Street, Army Camp Road, Victoria Street and Orchard Lane.

We have included maps to show you the work locations.

What will this mean for you?

These activities have been assessed as having a moderate noise impact, with the following equipment used:

- lighting towers and generators
- rollers, excavators, compactors and cranes
- paving machine, line marker machine, line removal machine, water blaster
- heavy vehicles
- concrete agitators and pumps
- road saw and hand tools
- light vehicles and traffic control.

We will minimise noise impact by carrying out work located closer to residential properties earlier in the night and switching off vehicles and equipment when not in use. Noise blankets may be used for activities near residences.

Night work will be carried out in stages along the bypass route to minimise the impact on residents.

During work hours, temporary speed reductions and lane closures will be in place on the New England Highway and adjoining local roads for the safety of workers and motorists.

Oversize/Overmass (OSOM) vehicles will also be making regular deliveries to site.

Please keep to the speed limits and follow the direction of traffic controllers and signs.

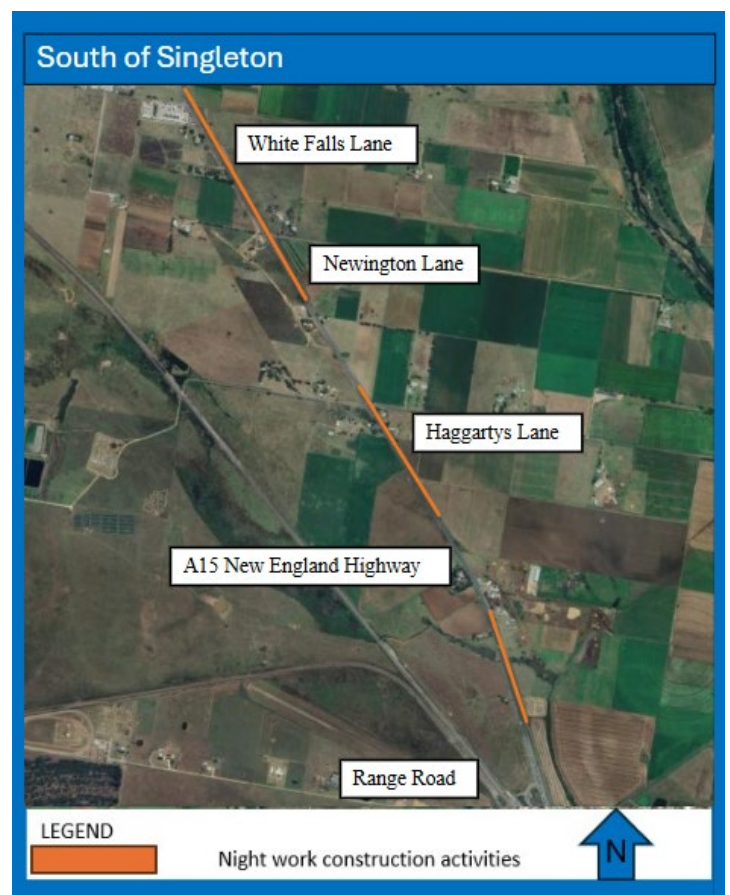
Looking ahead

We will continue to keep the community updated as work on the project progresses. The bypass is expected to open to traffic in late 2026, weather permitting.

Complaints or queries

If you have any complaints or queries, please contact the Project Line on **1800 991 254**.

Our standard construction hours are between 7am and 6pm Monday to Friday and 8am to 1pm on Saturday.



Oversize/Overmass deliveries



Oversize/Overmass (OSOM) vehicles will be making regular deliveries of concrete headstocks and girders along the project alignment. Example above is a delivery of girders (32m in length) using Putty Road.

Motorists are advised to keep to the speed limits and follow the direction of traffic controllers and signs.

Contact us



24-hour Construction Response Line
1800 991 254



SBP-community@acciona.com



nswroads.work/singleton



Singleton Bypass Project
PO Box 408 Singleton, NSW 2330



For the latest traffic updates:

Call 132 701, visit livetraffic.com or download the app Live Traffic NSW



Interpreter service

For languages other than English call 131 450
Arabic • Greek • Hindi • Mandarin • Vietnamese

لطلب خدمة الترجمة الشفهية للغات غير الإنجليزية اتصل
بالرقم **131 450**

Για υπηρεσίες διερμηνείας σε άλλες γλώσσες εκτός από
τα Αγγλικά καλέστε το **131 450**

अंग्रेज़ी के अतिरिक्त अन्य भाषाओं के लिए दुभाषिया सेवा
131 450 पर कॉल करें

获取英语以外的其他语言口译协助服务可以致电**131 450**

Để có dịch vụ thông ngôn cho các ngôn ngữ khác tiếng
Anh, gọi số **131 450**

