

# Construction update

## Sydney Harbour Bridge Cycleway Ramp

February 2025



Transport for NSW acknowledges the Cammeraygal people of the Eora Nation as the Traditional Custodians of the lands on which we work and pays respect to Elders past and present.

Transport for NSW is delivering a new bike ramp and cycle path from the Sydney Harbour Bridge cycleway to the bike network in Milsons Point. The project will improve the cycling experience for all bike users at this iconic landmark and support the predicted future growth in the number of bike riders travelling north and south of the Sydney Harbour Bridge.

### Upcoming work

Work onsite during February 2025 will include:

- trenching along the eastern side of Alfred Street South and the southern side of Lavender Street to Cliff Street to place the existing above ground power lines underground
- excavation for the cycle ramp landing in Bradfield Park North
- stormwater and services pit excavation in front of Milsons Point Station
- relocation of the Canary Date Palm in the Lavender Street roundabout to St Leonards Park.

Please see the location of upcoming work over the page.

### Temporary parking impacts

During our work to place the power lines underground, up to 10 parking spaces at a time along Alfred Street South will be temporarily removed for up to eight weeks. The parking spaces will be fenced off during the work.

We understand parking is important to the local community. We have carefully planned our work to stage parking removal to minimise impacts to residents and businesses. Signage will be in place during this period.

Please see map over the page for location of parking spaces to be temporarily removed.

### Reminder: Have your say – working at night to finish night work faster

We have approval to work two nights per week, with no more than six nights per month. Based on this, night work will be required for about 9 months from February to October 2025.

We propose to increase the number of weekly night shifts to reduce the overall duration by three months, finishing the majority of night work in July 2025, weather permitting.

We are **seeking endorsement** from directly adjacent residents and businesses before we proceed with increasing the number of nights we work between February and July 2025.



Please scan the QR Code and complete the online survey by **5pm Sunday 2 February 2025**.

If we receive endorsement from the community, we plan to commence the increased night works program by the end of February.

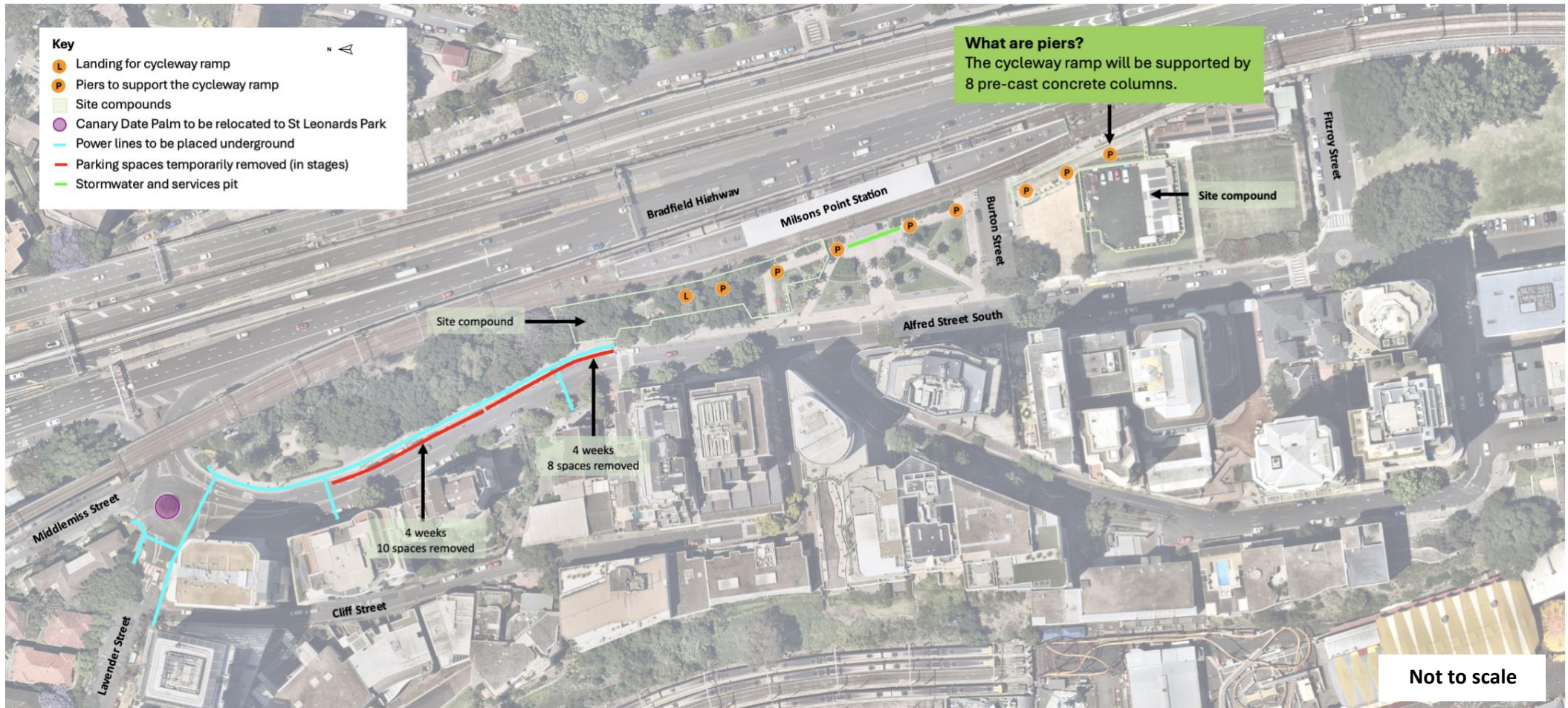
### Upcoming out of hours work

We will be working up to two nights, from **8pm to 5am Monday to Friday** to relocate the Canary Date Palm to St Leonards Park.

This work needs to take place at night to reduce the impact on local traffic including, pedestrians and cyclists.

Impacted residents will be notified of the work before we start.

## Location of upcoming work



### When we'll be working

Standard construction hours are:

- 7am to 6pm Monday to Friday
- 8am to 1pm on Saturday

No work will be carried out on Sundays or public holidays.

Work will be carried during the day wherever possible, however, some work will be required outside of these hours to minimise impacts to local traffic.

Impacted residents will be notified of work outside of standard construction hours before we start.

For the safety of our workers, the community and to reduce our impact on local traffic, you may see trucks arrive and depart before 7am and after 6pm. However, no unloading or loading will take place outside of our standard construction hours unless part of approved out of hours work.

### Contact us

If you have any questions regarding the project or would like to speak to a member of the project team, you can contact us via:

- Project Infoline **1800 581 595**
- [sydneyharbourbridgeprojects@transport.nsw.gov.au](mailto:sydneyharbourbridgeprojects@transport.nsw.gov.au)
- [nswroads.work/cycleway](https://nswroads.work/cycleway)

