

Construction update

Sydney Harbour Bridge Cycleway Ramp

September 2025



Transport for NSW acknowledges the Cammeraygal people of the Eora Nation as the Traditional Custodians of the lands on which we work and pays respect to Elders past and present.

Upcoming work

Work onsite in September 2025 includes:

Day work

- Installing bronze balustrades and pavers on the ramp.
- Removing pier scaffolding.
- Modifying services on Alfred Street South and Lavender Street.
- Trenching along Alfred Street South and Lavender Street within our work areas to place overhead powerlines underground.
- Ongoing footpath and road work along Alfred Street South to build the new two-way cycle path and shared path.
- Installation of new kerb, gutter and footpath and new cyclist on-ramp at the southern end of Middlemiss Street. Refer to page 2 for more information.

Night work

- Ongoing footpath and road work along Alfred Street South to build the new two-way cycle path and shared path.
- Testing the watermain on Alfred Street South and Middlemiss Street.
- Trenching across Alfred Street South to place overhead powerlines underground. Alfred Street South near Lavender Street will be temporarily closed during this work. Access to residential buildings will be maintained via traffic control.
- Removing and replacing the footpath and kerb at the corner of Middlemiss Street.
- Removing barriers and temporary fencing along the western side of Alfred Street South and southern side of Lavender Street.
- Installing concrete barriers and temporary fencing at the southern end of Middlemiss Street. Pedestrian access will be maintained.
- Temporarily moving the bus stop on Lavender Street approximately 20m west.

Refer to the map over the page for work locations.

Night work will be carried out from **6pm to 7am** on:

- **Wednesday 3 and Thursday 4 September**
- **Monday 15 and Tuesday 16 September**
- **Tuesday 23 and Wednesday 24 September**

For the safety of our workers and the community, and to reduce our impact on local traffic, you may see trucks arrive and depart before 7am and after 6pm.

Sydney Harbour Bridge Cycleway temporary closure

The Sydney Harbour Bridge Cycleway will be temporarily closed from **9pm to 5am** on **Tuesday 23 and Wednesday 24 September**.

Cyclists can walk their bicycles over the pedestrian pathway on the eastern side of the bridge during this time.

What you may see on site

Our work will use plant and equipment including excavators, jack hammers, road saws, vacuum and tip trucks, light vehicles, street sweepers, lighting towers and hand tools which will move between sites. You may notice:

- workers and vehicles
- traffic controllers and signage
- road closures and reduced speed limits
- footpath closures
- noise from machinery and equipment.

Managing our impact

We will minimise impacts to the community and the environment by:

- reducing noise as much as possible by turning off equipment when not in use
- using non-tonal reversing beepers
- monitoring noise periodically so we can manage potential impacts and adjust our work if required.



Middlemiss Street temporary closure

From late September, Middlemiss Street, from Arthur to Lavender streets will be temporarily closed for around four weeks, subject to weather.

The temporary closure will enable us to complete work faster, minimising longer term construction impacts on Middlemiss Street. Work will take place during the day and on the six scheduled night shifts per month.

Work will include:

- installing new kerbs, gutters and footpaths
- installing new cyclist on-ramp
- painting new line marking
- undergrounding overhead powerlines at the corner of Middlemiss Street.

During the closure, Middlemiss Street will temporarily become two-way with a turning bay at the end of the street. Four car parking spaces and one motorcycle space will be temporarily unavailable to accommodate passing vehicles. Two trees, a Callery Pear and Cherry Plum, also need to be removed and will be replaced with a similar size and species once the work is complete.

Cyclists will be detoured down Lavender and Arthur Streets. Pedestrian access on the western side of Middlemiss Street will be maintained. Signage will be in place.

Local residents will be provided more information closer to the temporary closure.

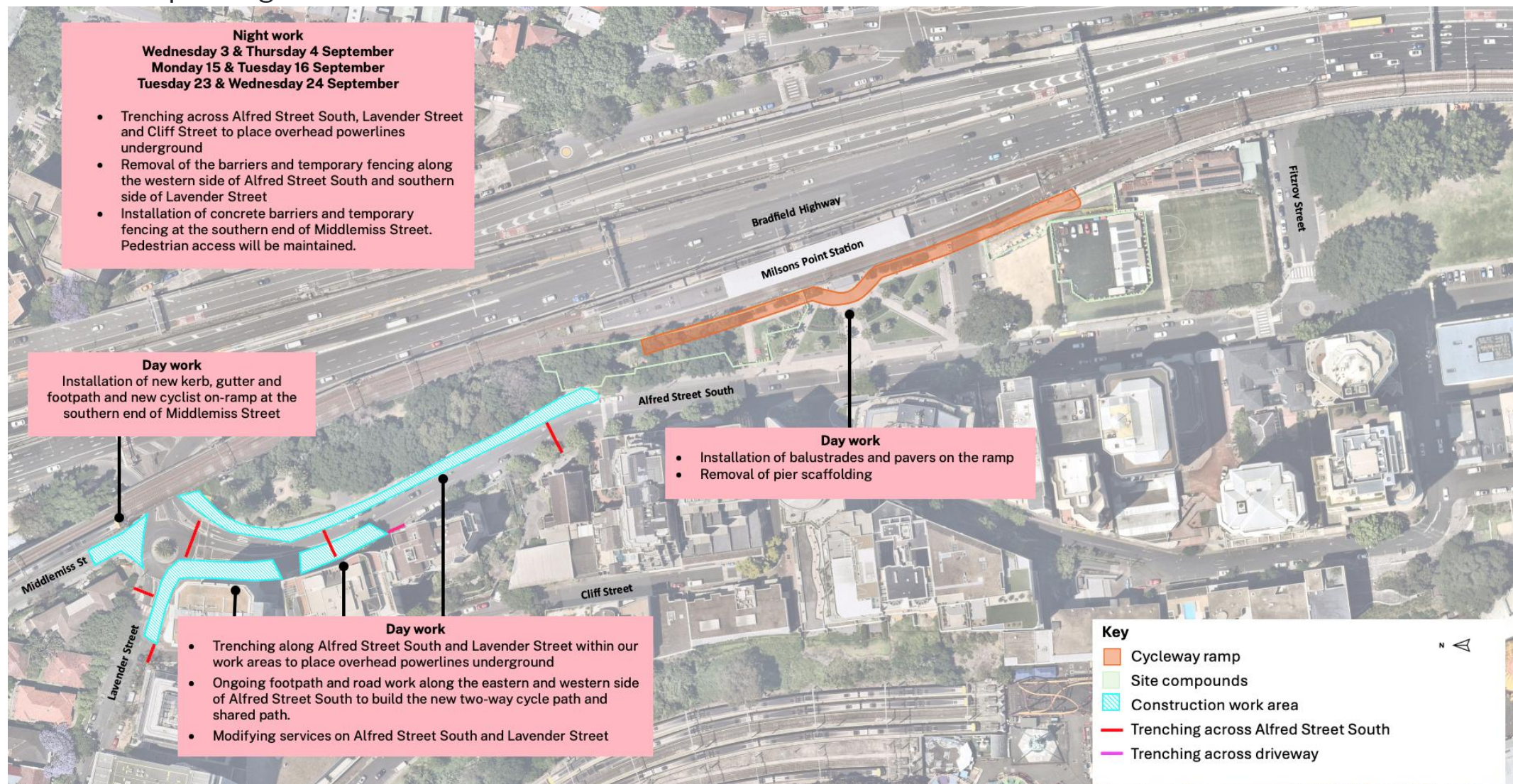


KEY

- | | |
|-------------------|---|
| Work zone | Temporary parking removal |
| Pedestrian access | Tree removal (replaced with similar size and species) |
| Cyclist detour | Bus stop temporarily relocated 20 meters west |
| Train line | |



Location of upcoming work



When we'll be working

Standard construction hours are:

- 7am to 6pm Monday to Friday
- 8am to 1pm on Saturday

Work will be carried out during the day wherever possible, however, some work will be required outside of these hours to minimise impacts to local traffic.

Impacted residents will be notified of work outside of standard construction hours before we start.

Contact us

If you have any questions regarding the project or would like to speak to a member of the project team, you can contact us via:

- Project Infoline **1800 581 595**
- sydneyharbourbridgeprojects@transport.nsw.gov.au
- nswroads.work/cycleway