

# Sydney Harbour Bridge Cycleway Ramp

## Upcoming night work

March 2025



Transport for NSW acknowledges the Cammeraygal people of the Eora Nation as the Traditional Custodians of the lands on which we work and pays respect to Elders past and present.

Transport for NSW is delivering a new bike ramp and cycle path from the Sydney Harbour Bridge cycleway to the bike network in Milsons Point. The project will improve the cycling experience for all bike users at this iconic landmark and support the predicted future growth in the number of bike riders travelling north and south of the Sydney Harbour Bridge.

### What work are we doing?

Further to the construction update issued on Friday 28 February, we will be carrying out work at night over the coming weeks including:

- relocating the Canary Date Palm in the Lavender Street roundabout to St Leonards Park
- modifying the Lavender Street roundabout and traffic mediums on Lavender Street and Alfred Street South
- trenching across Alfred Street South at the Lavender Street roundabout
- delivering to site and installing the cycleway ramp concrete piers.

This work needs to be carried out at night for safety reasons and to minimise impact on the local road network.

Please see the location of upcoming work over the page.

### When we'll be working

We'll be working from **6pm to 7am** on the following nights in March:

- **Monday 17 and Tuesday 18 March**
- **Wednesday 26 and Thursday 27 March**

Work schedules are subject to change due to weather and site conditions. We will notify impacted residents if work schedules change.

Noisy work is only planned between **8pm and 5am**.

### What will this mean for you?

The work will require use of plant and equipment including excavators, jack hammers, road saws, vacuum and tip trucks, light vehicles, street sweeper, lighting towers and hand tools which will move between sites.

You may notice:

- workers and vehicles
- traffic controllers and signage
- road closures and reduced speed limits
- footpath closures
- noise from machinery and equipment.

### Managing our impacts

We will minimise impacts to the community and the environment by:

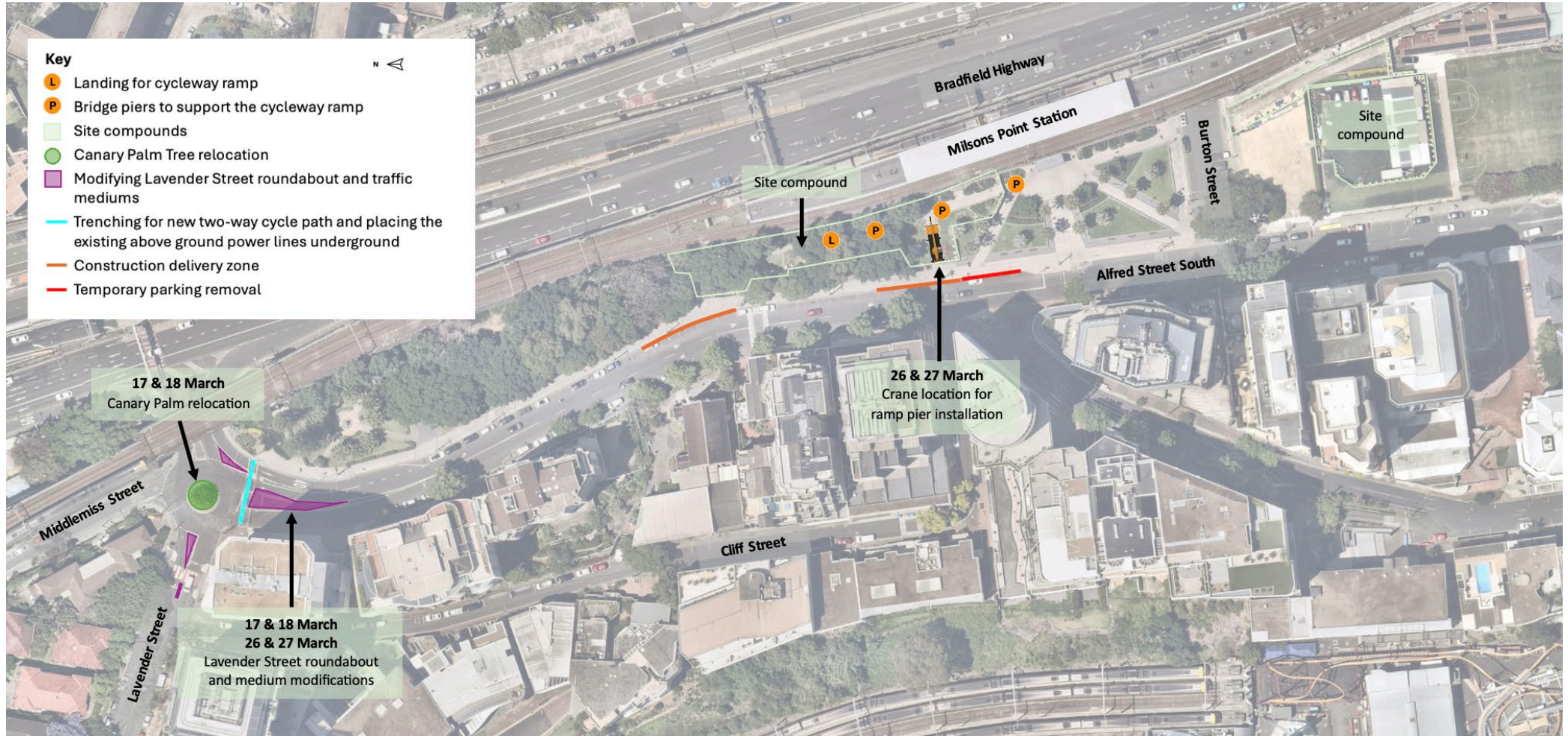
- reducing noise as much as possible by turning off equipment when not in use
- using nontonal reversing beepers
- monitor noise periodically so we can manage potential impacts and adjust our work as required.

### Temporary parking impacts

During the installation of the cycleway ramp piers up to three parking spaces on Alfred Street South will be temporarily unavailable to support this work. The parking spaces will be returned at the end of each shift. Signage will be in place during this period.



## Work locations



## Contact us

If you have any questions regarding the project or upcoming night work, you can contact us via:

- phone **1800 581 595**
- email [sydneyharbourbridgeprojects@transport.nsw.gov.au](mailto:sydneyharbourbridgeprojects@transport.nsw.gov.au)

For the latest information about the project visit [nswroads.work/cycleway](https://nswroads.work/cycleway)

