

Rail Service Improvement Program

Wolli Creek

June 2025



Transport for NSW acknowledges the Gweagal, Bidjigal and Gadigal Clans for the Eora Nation as the Traditional Custodians of the lands on which we work and pays respect to Elders past and present.

The Rail Service Improvement Program enables a safer, more equitable, and integrated transport network where people can travel more safely, reliably, and efficiently across NSW.

What work are we doing?

Substation demolition works at Spark Lane are now complete. In June, we will also:

- continue demobilising at our site compound at 5A Lusty Street and laydown area at 25 Lusty Street
- finalise other minor construction activities including inspections and general site surveys
- complete signalling rectification works near Turrella and Bardwell Park.

When and where we'll be working

Work will take place in Wolli Creek at our site compound and laydown area, and inside the rail corridor between Henderson Street, Turrella and Slade Road, Bardwell Park.

Standard construction hours on this project are between **7am and 6pm Monday to Friday and 8am and 1pm on Saturdays**.

Out of hours work

To safely complete signalling rectification work, we will work out of hours between **6pm Monday 9 June and 6pm Wednesday 11 June inside the rail corridor at Henderson Street, Turrella and Slade Road, Bardwell Park**. Please note other agencies may also be working in the area.

What will this mean for you?

You may notice:

- workers and construction vehicles including near the substation and Spark Lane
- noise at times from machinery and equipment
- temporary traffic changes and presence of traffic controllers on Chisholm Street and Spark Lane.

We apologise for any minor delays you may experience while construction vehicles and machines enter and exit Spark Lane. Residential access via local streets will always remain open.

Work at Spark Lane

The demolition of the Undercliffe substation began **early April and has now been completed**.

To ensure final remediation works take place safely and efficiently, **traffic control will remain in place throughout June**.

Please note **road access via Spark Lane behind 9 Brodie Spark Drive will be closed each day of work from 7am to 6pm and reopened at the end of each shift behind the substation only**.

Driveway access at 17 Chisholm Street will be managed by traffic controllers for safe entry and exit into the building car park during this work with minimal impacts expected. **This work will take place during standard construction hours only** and will follow strict environmental mitigation measures.



Managing our impacts

We understand construction activities may cause disruption to our closest neighbours, and every effort will be made to minimise impacts, including locating equipment as far away from residents and businesses as possible, and traffic control set up on Spark Lane and Chisholm Street.

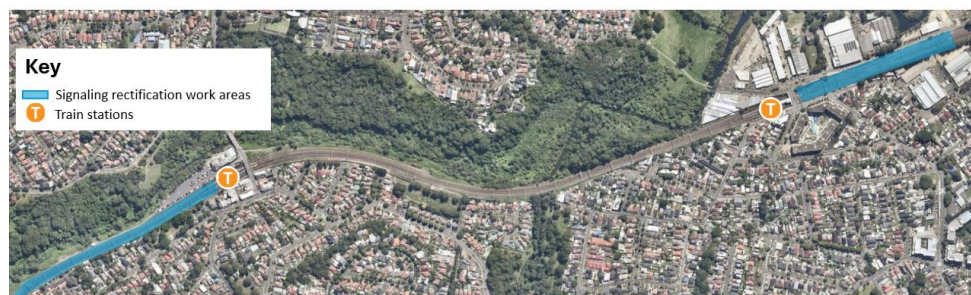
Location of work areas

Note these maps are indicative only and not to scale

Wolli Creek



Turrella and Bardwell Park



Contact us



Project Infoline **1800 684 490**
24-hour Construction Response Line
1800 775 465



projects@transport.nsw.gov.au



Visit the online portal go to
caportal.com.au/tfnsw/rsip



Interpreter service

For languages other than English call 131 450
Arabic • Greek • Hindi • Mandarin • Vietnamese

لطلب خدمة الترجمة الشفهية للغات غير الإنجليزية اتصل
بالرقم **131 450**

Για υπηρεσίες διερμηνείας σε άλλες γλώσσες εκτός από
τα Αγγλικά καλέστε το **131 450**

अंग्रेज़ी के अतिरिक्त अन्य भाषाओं के लिए दुभाषिया सेवा
131 450 पर कॉल करें

获取英语以外的其他语言口译协助服务可以致电**131 450**

Để có dịch vụ thông ngôn cho các ngôn ngữ khác tiếng
Anh, gọi số **131 450**

www.transport.nsw.gov.au/privacy-statement#Your_Privacy



For the latest traffic updates:

Call 132 701, visit livetraffic.com or
download the app Live Traffic NSW