

Rail Service Improvement Program

Arncliffe, Wolli Creek, and Tempe

April 2025



Transport for NSW acknowledges the Gweagal, Bidjigal and Gadigal Clans for the Eora Nation as the Traditional Custodians of the lands on which we work and pays respect to Elders past and present.

The Rail Service Improvement Program, formerly known as More Trains, More Services enables a safer, more equitable, and integrated transport network where people can travel more safely, reliably, and efficiently across NSW.

What work are we doing?

Several infrastructure improvements are currently being delivered in your area as part of this program, including:

- Wolli Creek Power Supply Upgrade project
- Arncliffe to Tempe Signalling Upgrade project.

In April, we will be:

- removing a redundant substation (Undercliffe Substation) in Wolli Creek at Spark Lane
- installing signalling and communication cables
- upgrading signalling equipment rooms
- finalising other minor construction activities and general site surveys
- constructing a concrete footpath inside the rail corridor, near the commuter car park at Arncliffe.

These works are all scheduled to take place during standard construction hours only.

When and where we'll be working

Work will take place in Wolli Creek at our site compound and at the substation location at Spark Lane, as well as inside and adjacent to the rail corridor between Arncliffe and Tempe.

To view all work activities and work areas in more detail across the program, please visit caportal.com.au/tfnsw/rsip and explore the construction map.

Standard construction hours on this project are between **7am and 6pm Monday to Friday and 8am and 1pm on Saturdays.**

What will this mean for you?

You may notice:

- an increase in workers and construction vehicles including near the substation
- increased noise from machinery and equipment
- temporary traffic changes and presence of traffic controllers on Chisholm Street and Spark Lane.

We apologise for any short delays you may experience while our construction vehicles and machines enter and exit Spark Lane for the substation removal works. Residential access through local streets will remain open at all times.

Removal of the Undercliffe Substation

As part of the completion of the Wolli Creek Power Supply Upgrade project, the demolition of a redundant substation in Wolli Creek near the train station will take place **from Monday 7 April**



and will occur until end of May 2025. High impact work will not be continuous.

The substation structure is on Spark Lane and will be removed in stages using an excavator, jackhammer, and other construction equipment to safely remove each component of the substation.

Please note **road access via Spark Lane behind 9 Brodie Spark Drive will be closed each day of work from 7am to 6pm and reopened at the end of each shift behind the substation only.**

Driveway access at 17 Chisholm Street will be managed by traffic controllers for safe entry and exit into the building car park during this work with minimal impacts expected.

This work will take place during standard construction hours only and will follow strict environmental mitigation measures.

Direct communications to neighbouring properties of the substation will be sent prior to these work activities.

Easter and Anzac Day shutdown period

Work will not occur over the Easter and Anzac Day period in April.

Our offices will be shut down and no work will take place on;

- **Friday 18 April to Monday 21 April, returning to work on Tuesday 22 April**
- **Friday 25 April.**

You may notice standard security checks in these work locations at these times.

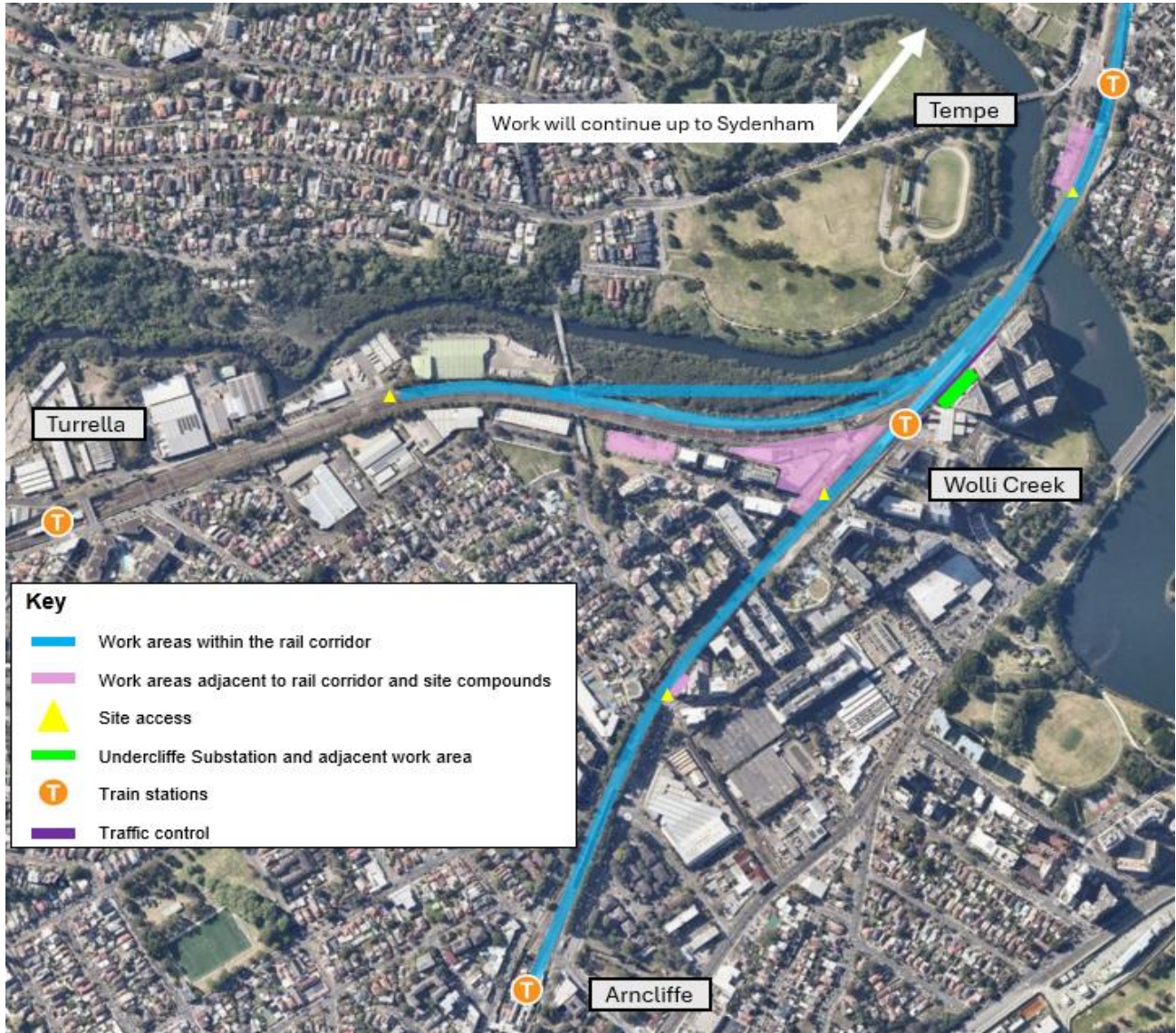
Managing our impacts

We understand construction activities may cause disruption to our closest neighbours, and every effort will be made to minimise impacts where possible, including:

- locating equipment as far away from residents and businesses as possible
- compliance with strict environmental conditions relating to noise.
- traffic control set up on Spark Lane and Chisholm Street.

Location of work areas

Please note these maps are indicative only and not to scale. Temporary laydown areas along the rail corridor will be used for deliveries, storage of materials and equipment, worker briefings and parking.



Contact us



Project Infoline **1800 684 490**
24-hour Construction Response Line
1800 775 465



projects@transport.nsw.gov.au



Visit the online portal go to
caportal.com.au/tfnsw/rsip



Interpreter service

For languages other than English call 131 450
Arabic • Greek • Hindi • Mandarin • Vietnamese

لطلب خدمة الترجمة الشفهية للغات غير الإنجليزية اتصل
بالرقم **131 450**

Για υπηρεσίες διερμηνείας σε άλλες γλώσσες εκτός από
τα Αγγλικά καλέστε το **131 450**

अंग्रेज़ी के अतिरिक्त अन्य भाषाओं के लिए दुभाषिया सेवा
131 450 पर कॉल करें

获取英语以外的其他语言口译协助服务可以致电**131 450**

Để có dịch vụ thông ngôn cho các ngôn ngữ khác tiếng
Anh, gọi số **131 450**

www.transport.nsw.gov.au/privacy-statement#Your_Privacy



For the latest traffic updates:

Call 132 701, visit livetraffic.com or
download the app Live Traffic NSW