

# Woodford Pedestrian Footbridge renewal

From Saturday 6 September to Sunday 7 September 2025

## What we are doing

Sydney Trains will complete renewal work at Woodford Pedestrian Footbridge, Woodford from Saturday 6 September to Sunday 7 September.

The work includes the ongoing construction of the new footbridge.

The footbridge will be replaced and is expected to be open by ANZAC Day 2026, however during this time there will be no access between Railway Parade and Woodford Memorial Park at this location.

We understand this work may have an impact on you and we appreciate your patience and understanding.

## How this affects you

### Noise

- These works may create additional noise during the day.
- **Work will take place from 6am to 6pm Saturday 6 September and Sunday 7 September.**
- Equipment may be delivered to the worksite outside the above times. Some deliveries may occur at night due to daytime travel restrictions on large vehicles.
- Finishing works including the removal of equipment may take place beyond the dates stated above.

## Traffic and parking

- **The pedestrian footbridge will be closed until replacement. Please use alternative routes, such as Park Road, Appian Way or via Woodford Station, to safely cross the railway line.**
- The worksite storage area will be set up opposite 88 Railway Parade.
- We will park our vehicles inside the rail corridor where possible, however please be aware that on-street parking may be limited near worksites.
- Traffic controllers will be on duty to assist motorists and pedestrians throughout the duration of the works.

**We apologise for any inconvenience and thank you for your cooperation during these essential works.**

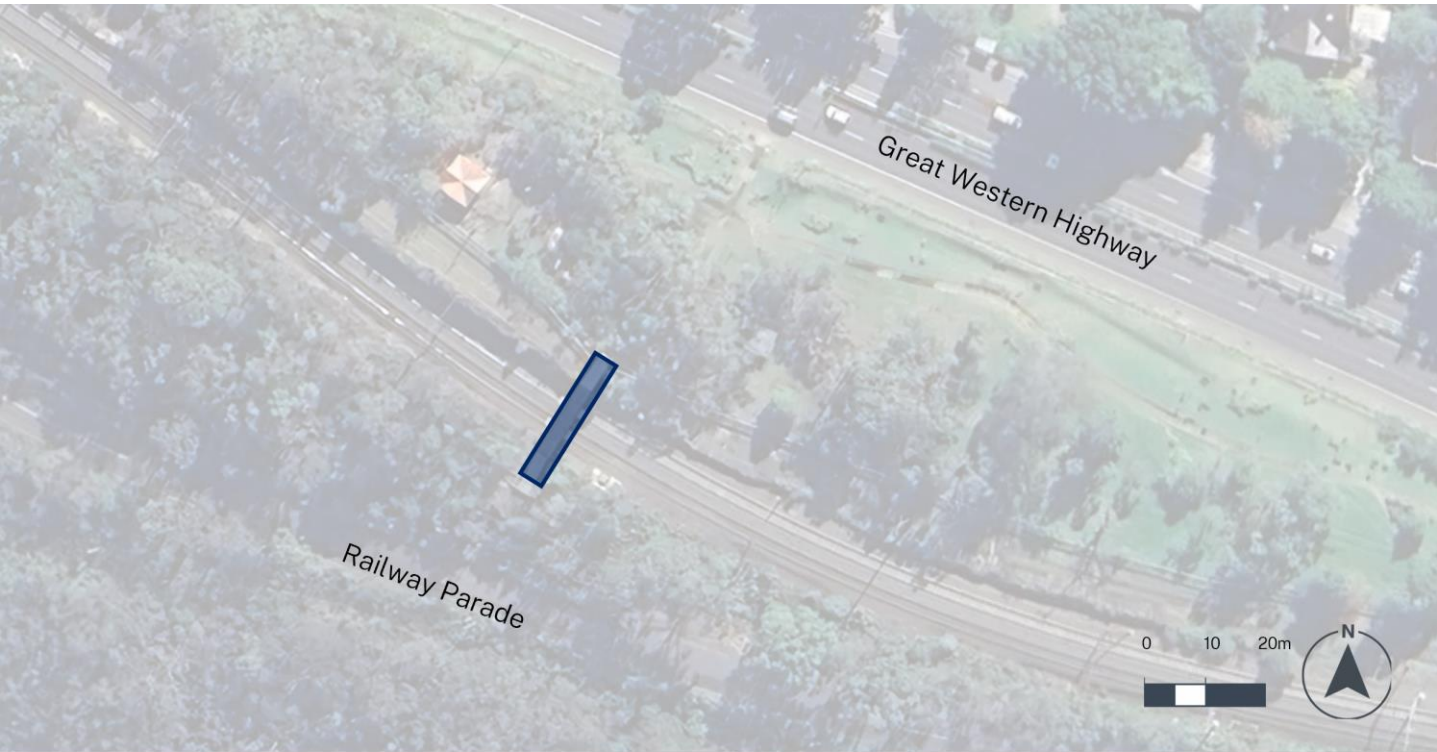



## Contact us

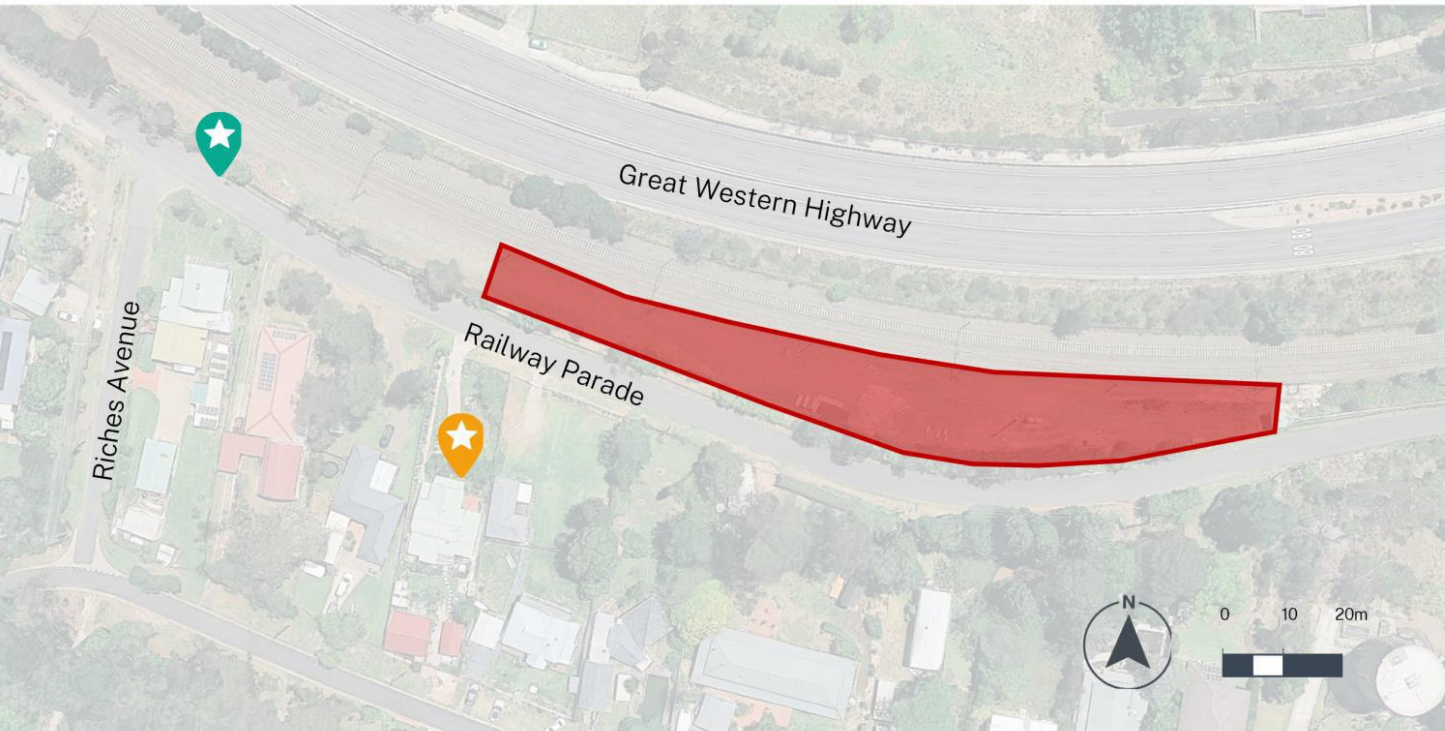
For upcoming work [transport.nsw.gov.au/sydtraincommunity](https://transport.nsw.gov.au/sydtraincommunity)

To report environmental concerns (24 hours) 1300 656 999

# Location of work



KEY       Removal of footbridge



KEY       Worksite storage area       88 Railway Parade       Site access



Transport for NSW acknowledges the Traditional Custodians of the lands on which we work and pays respect to Elders past and present.

