

Rail Service Improvement Program

Arncliffe to Tempe

May 2025



Transport for NSW acknowledges the Gweagal, Bidjigal and Gadigal Clans for the Eora Nation as the Traditional Custodians of the lands on which we work and pays respect to Elders past and present.

The Rail Service Improvement Program enables a safer, more equitable, and integrated transport network where people can travel more safely, reliably, and efficiently across NSW.

What work are we doing?

Several infrastructure improvements are currently being delivered in your area as part of the Arncliffe to Tempe Signalling Upgrade project.

In May, we will be:

- installing and terminating signalling and communication cables and cable containments
- upgrading existing rail infrastructure
- installing trackside equipment including posts, brackets, and pressurised air hoses
- conducting speed sign inspections
- pre-testing and wiring in signalling equipment rooms and other locations
- finalising other minor construction activities and general site surveys.

When and where we'll be working

Work will take place within the rail corridor at Wolli Creek. We will also be working at our site compound adjacent to the rail corridor between Arncliffe and Tempe.

Standard construction hours on this project are between **7am and 6pm Monday to Friday and 8am and 1pm on Saturdays.**

Out of hours work

Due to safety requirements, some work is required to take place outside of standard construction hours.

This work will take place between:

- **6pm Wednesday 7 May and 6am Tuesday 14 May**
- **6pm Wednesday 21 May and 6am Wednesday 28 May.**

Please note other agencies will be working in the area.

What will this mean for you?

You may notice:

- an increase in workers and construction vehicles including near the substation
- increased noise from machinery and equipment.

Managing our impacts

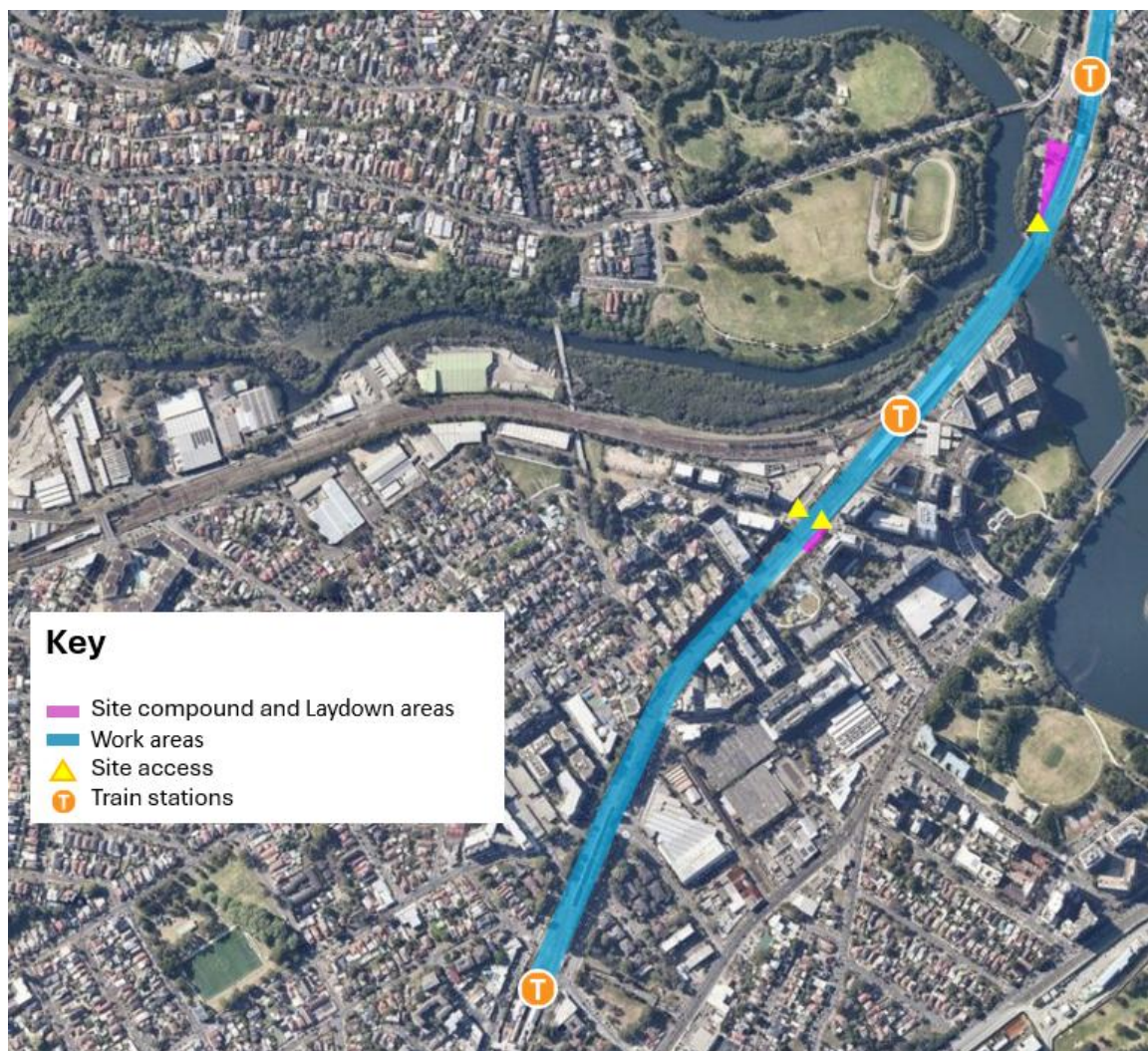
We understand construction activities may cause disruption to our closest neighbours, and every effort will be made to minimise impacts where possible, including:

- locating equipment as far away from residents and businesses as possible
- compliance with strict environmental conditions relating to noise.



Location of work areas

Please note these maps are indicative only and not to scale. Temporary laydown areas along the rail corridor will be used for deliveries, storage of materials and equipment, worker briefings and parking.



Contact us



Project Infoline **1800 684 490**
24-hour Construction Response Line
1800 775 465



projects@transport.nsw.gov.au



Visit the online portal go to
caportal.com.au/tfnsw/rsip



Interpreter service

For languages other than English call 131 450
Arabic • Greek • Hindi • Mandarin • Vietnamese

لطلب خدمة الترجمة الشفهية للغات غير الإنجليزية اتصل
بالرقم **131 450**

Για υπηρεσίες διερμηνείας σε άλλες γλώσσες εκτός από
τα Αγγλικά καλέστε το **131 450**

अंग्रेज़ी के अतिरिक्त अन्य भाषाओं के लिए दुभाषिया सेवा
131 450 पर कॉल करें

获取英语以外的其他语言口译协助服务可以致电**131 450**

Để có dịch vụ thông ngôn cho các ngôn ngữ khác tiếng
Anh, gọi số **131 450**

www.transport.nsw.gov.au/privacy-statement#Your_Privacy



For the latest traffic updates:

Call 132 701, visit livetraffic.com or
download the app Live Traffic NSW