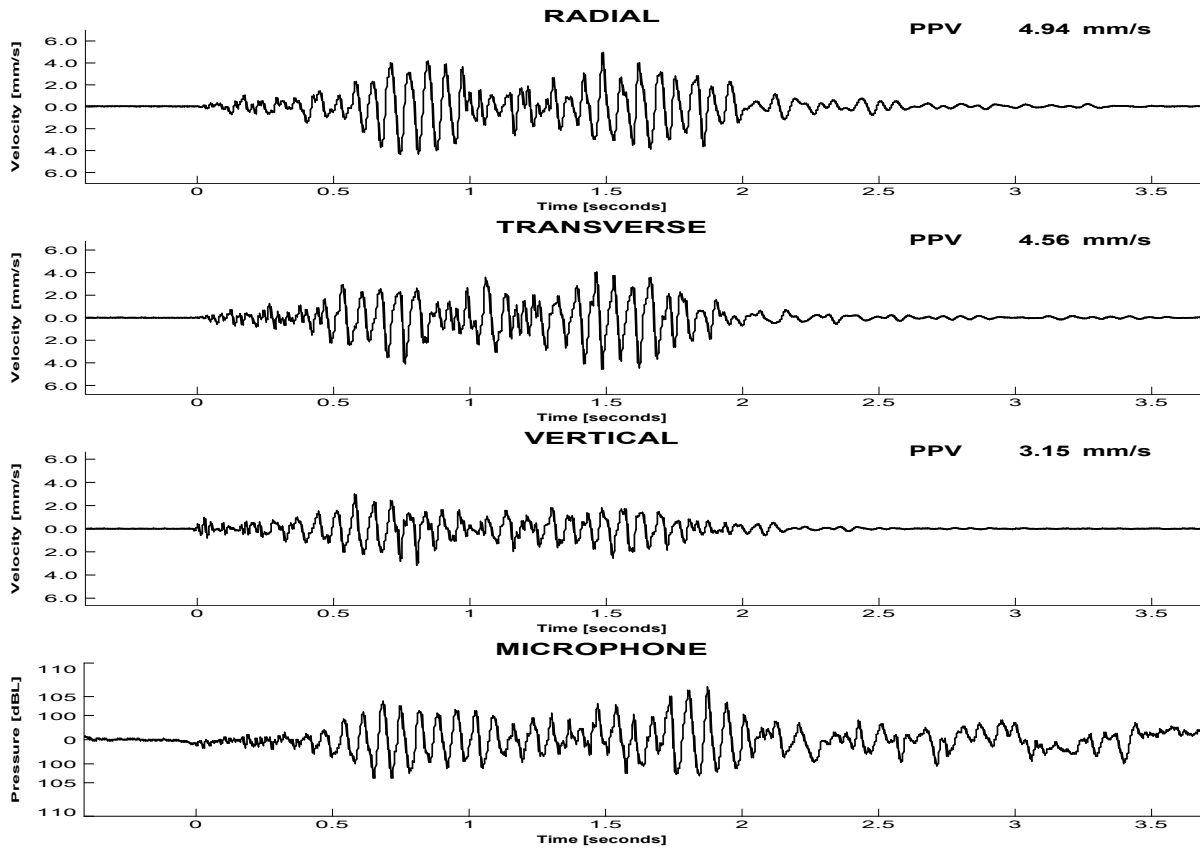


# Bombo Quarry

Location: Stn 'K'  
Triggered by : Vertical

Date: 2025-06-05  
Time: 13:23:23

Triggers Set : Vector Sum: 0.29mm/s, Channels 1-3: 0.28mm/s



## RESULTS

Peak Vector Sum Velocity : 6.90 mm/s at 1.486 s  
Peak Overpressure : 106.7 dBL at 1.873 s

	Peak	Frequency	Time	Acceleration	Displacement
	[mm/s]	(ZC at Peak) [Hz]	(Rel. to Trigger) [s]	(Est. from PPV) [mm/s <sup>2</sup> ]	(Est. from PPV) [mm]
Radial	4.94	15.5	1.486	341	79.8
Transverse	4.56	16.1	1.485	477	70.7
Vertical	3.15	25.8	0.806	360	30.5

Monitoring conducted by: .....  
(Your Company Name:Your Name)

TM Serial Number : 4422 Last Calibration: 2024-07-15

Bombo Quarry\M4422 Bombo Quarry @ Stn 'K' @ 2025-06-05 13.23.23.twf  
T-Link 1.2 - ANZEC Standard.rtt

Texcel Monitors comply with Appendix J of AS 2187.2-2006