



# Planned work in October 2025

## Central Coast Highway and Tumbi Road intersection upgrade

October 2025



Transport for NSW acknowledges the Darkinjung people as the Traditional Custodians of the lands on which we work and pays respect to Elders past and present.

The Australian and NSW governments are investing \$65.5 million to upgrade the Central Coast Highway and Tumbi Road intersection.

As part of the plans to improve traffic flow and safety on the Central Coast Highway between Wamberal and Bateau Bay, the NSW Government has prioritised the most congested intersection at the Central Coast Highway and Tumbi Road.

We will be continuing work on the upgrade during October.

### What work are we doing?

Work includes:

- excavation and earthwork
- services investigation and installation of new services.

### When and where we'll be working

This update covers work taking place from **Wednesday 1 October to Friday 31 October, 2025**, weather permitting.

Normal working hours are between **7am and 6pm weekdays** and **8am and 1pm Saturdays**.

Due to high traffic volumes during the day, we will be carrying out work at night to minimise disruption to road users and ensure the safety of workers.

Out of hours work will happen at **night** between **7pm and 7am** from **Sunday to Thursday**.

### What will this mean for you?

You may notice:

- workers and vehicles
- lane closures and traffic control
- noise from machinery and equipment.

A temporary reduced speed limit of 40 km/h will be in place throughout the work zone for the safety of motorists and workers.

Please keep to speed limits and follow the direction of traffic controllers and signs.

### Managing our impacts

The night work will involve the use of machinery which generates noise.

We will make every effort to minimise noise by turning off machinery and vehicles when not in use.

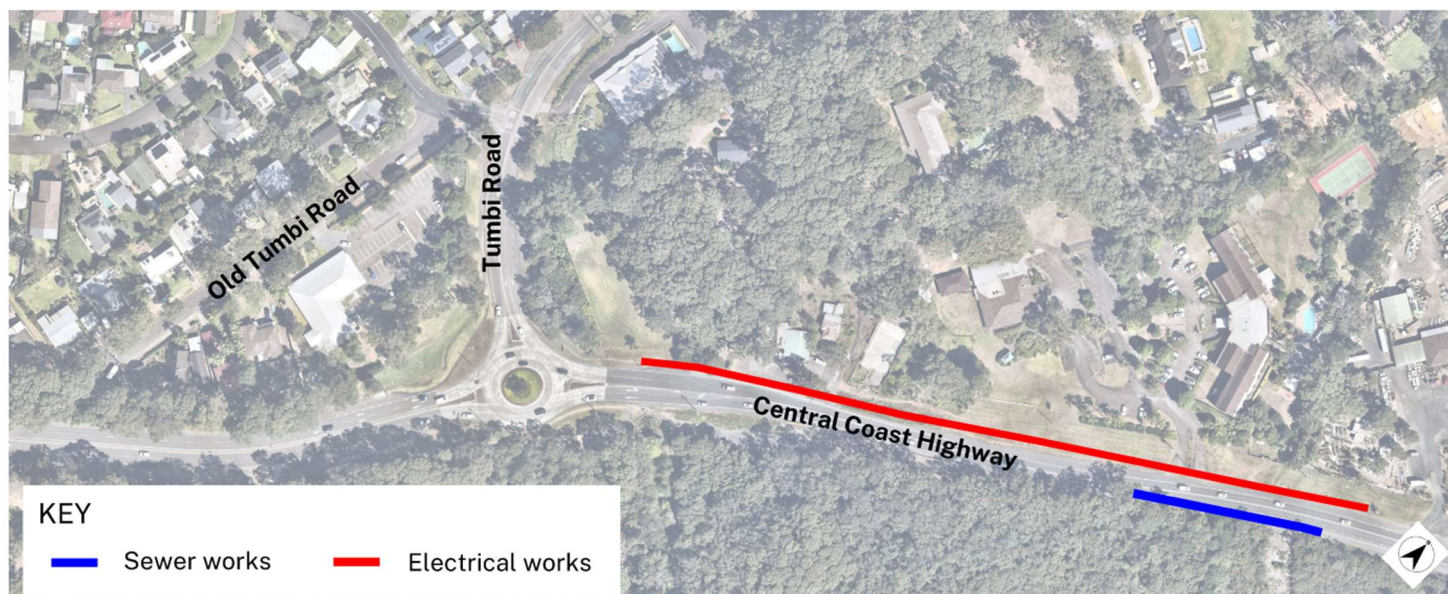
Directly affected residents will be contacted and advised of the likely impact and what we are doing to minimise disruption during the work.



## Our night work schedule (weather permitting)

Activity and location	Duration	Equipment to be used
Ausgrid overhead streetlight works	2 nights	Traffic control, trucks, lighting towers, bucket trucks/elevated work platforms, light vehicles
Sewer installation works	5 nights	Traffic control, excavator, trucks, lighting towers, light vehicles
Delivery of plant and equipment to site, as required		

## Location of work area



## Contact us



Project Infoline **1800 490 636**



**tumbi@daracon.com.au**



**roads-waterways.transport.nsw.gov.au**



### Interpreter service

For languages other than English call **131 450**  
Arabic • Greek • Hindi • Mandarin • Vietnamese

لطلب خدمة الترجمة الشفهية للغات غير الإنجليزية اتصل  
بالرقم **131 450**

Για υπηρεσίες διερμηνείας σε άλλες γλώσσες εκτός από  
τα Αγγλικά καλέστε το **131 450**

अंग्रेज़ी के अतिरिक्त अन्य भाषाओं के लिए दुभाषिया सेवा  
**131 450** पर कॉल करें

获取英语以外的其他语言口译协助服务可以致电**131 450**

Để có dịch vụ thông ngôn cho các ngôn ngữ khác tiếng  
Anh, gọi số **131 450**

[www.transport.nsw.gov.au/privacy-statement#Your\\_Privacy](http://www.transport.nsw.gov.au/privacy-statement#Your_Privacy)



### For the latest traffic updates:

Call **132 701**, visit [livetraffic.com](http://livetraffic.com) or  
download the app Live Traffic NSW