



# Fifteenth Avenue Upgrade

Community Update

August 2025



Artist's impression of Cowpasture Road Upgrade

The Australian and NSW governments are investing \$1 billion to upgrade Fifteenth Avenue, with construction expected to start in 2027.

The upgrade will include:

- Two lanes in each direction
- Space for future bus lanes
- Traffic lights at multiple intersections including Second Avenue
- Turning lanes, making it safer for the local community
- Improvements for people walking and bike riding
- Better road signs.



Scan the QR code to read this Community Update in Arabic and Vietnamese.

قراءة هذا التحديث المجتمعي باللغة العربية



Đọc bằng tiếng Việt



Transport for NSW acknowledges the Dharug people as the Traditional Custodians of the lands on which we work and pays respect to Elders past and present.

# Future vision

## Liverpool to Airport Transit Corridor

In the future, we will transform Fifteenth Avenue into the Liverpool to Airport Transit Corridor, providing a direct link to Bradfield City Centre. We will do this by further widening Fifteenth Avenue and building a new road from the western end of Fifteenth Avenue to Bradfield Metro Link Road. We are also currently working on the Bradfield Priority roads, to make sure the road network will link to the future extension of Fifteenth Avenue.

The upgrade is a key part of the Transport for NSW 30-year strategic vision, *Connecting the Western Sydney Airport Precinct*. The vision is designed to bring equity to Western Sydney, by developing a reliable transport network connecting people to housing, jobs and economic opportunities in the new Bradfield City Centre and Western Sydney International Airport.

Future stages of the Liverpool to Airport Transit Corridor are not yet funded, but the work we are doing now is the first step in bringing this future vision to life.



## Planning for the future – Corridor protection



Corridor protection is important when planning for the needs of growing communities and industries. To make space for future upgrades including dedicated bus lanes, Transport for NSW will protect land along Fifteenth Avenue between Cowpasture Road and Devonshire Road.

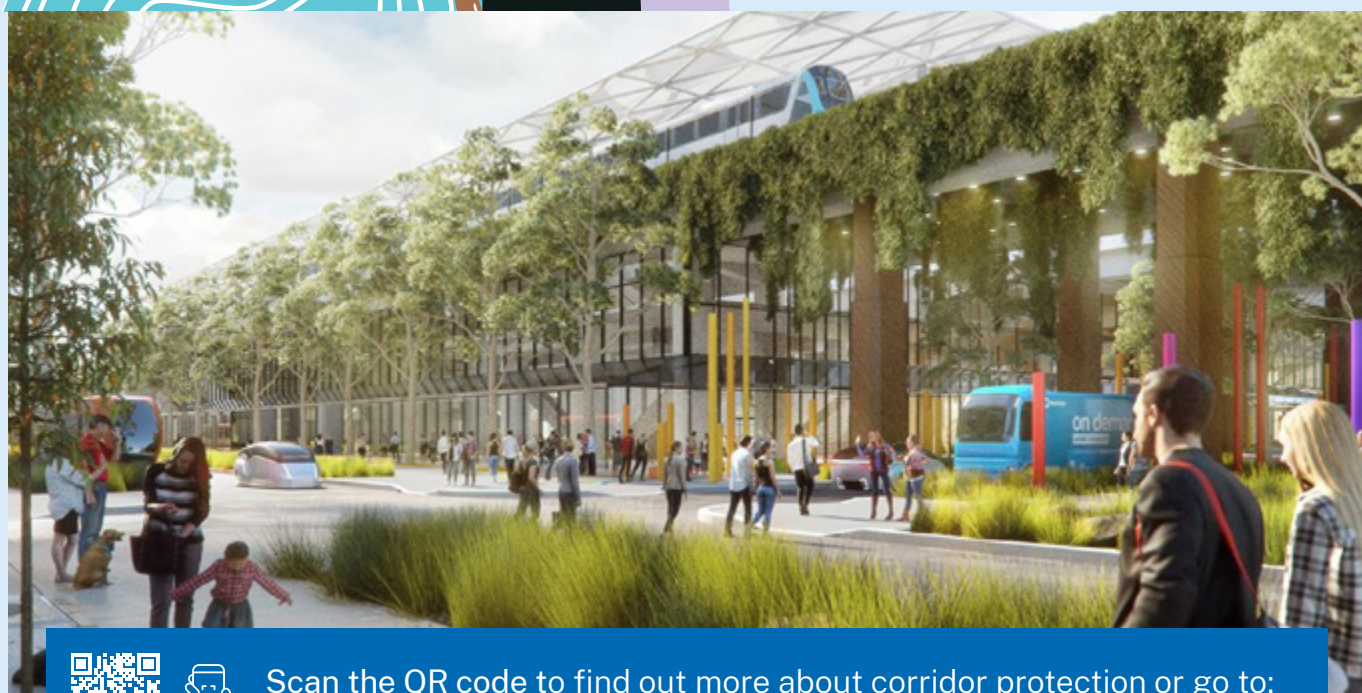
Protecting land ensures that as NSW grows, communities will have access to transport into the future.

Specific information about the location of corridor protection will be provided when plans for the Fifteenth Avenue upgrade are more developed. Owners of affected properties will be contacted individually.

Corridor protection includes land owned by private people and businesses.

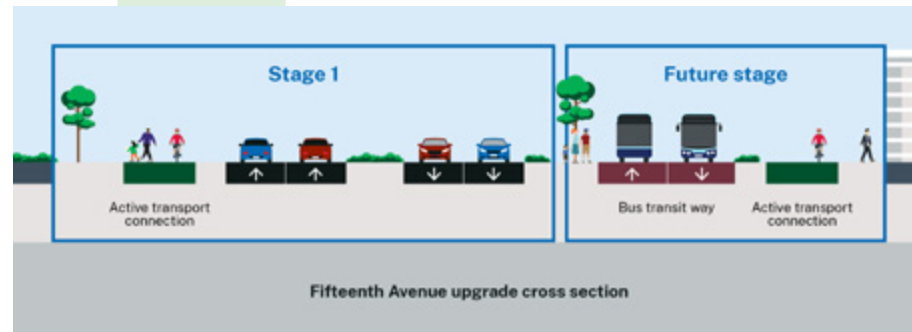
**Property acquisition within NSW is governed by the Land Acquisition (Just Terms Compensation) Act 1991.**

Artist's impression of Bradfield city centre



Scan the QR code to find out more about corridor protection or go to: [transport.nsw.gov.au/corridors](https://transport.nsw.gov.au/corridors)





## Planning the upgrade

In January 2025, the Federal and the NSW State Governments announced joint funding of \$1 billion to upgrade Fifteenth Avenue, from Cowpasture Road towards Devonshire Road.

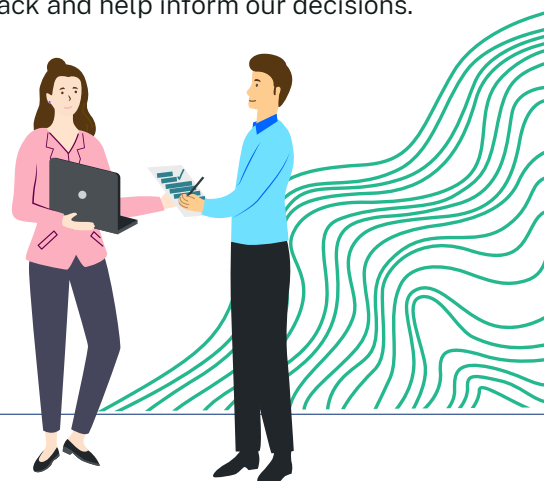
The upgrade will widen the road to four lanes (two lanes in each direction), and make improvements for people walking, getting onto buses and bike riding.

Once complete the upgrade will:

- ✓ Reduce congestion and improve travel times
- ✓ Make it safer for all road users
- ✓ Support a growing community.

Road upgrades must be planned carefully, and this takes time.

We have now awarded the tender for a concept design to be developed. In the coming months we will start consulting the community on early proposed plans, including the Access Strategy. This will ensure road users and residents can provide feedback and help inform our decisions.



### KEY

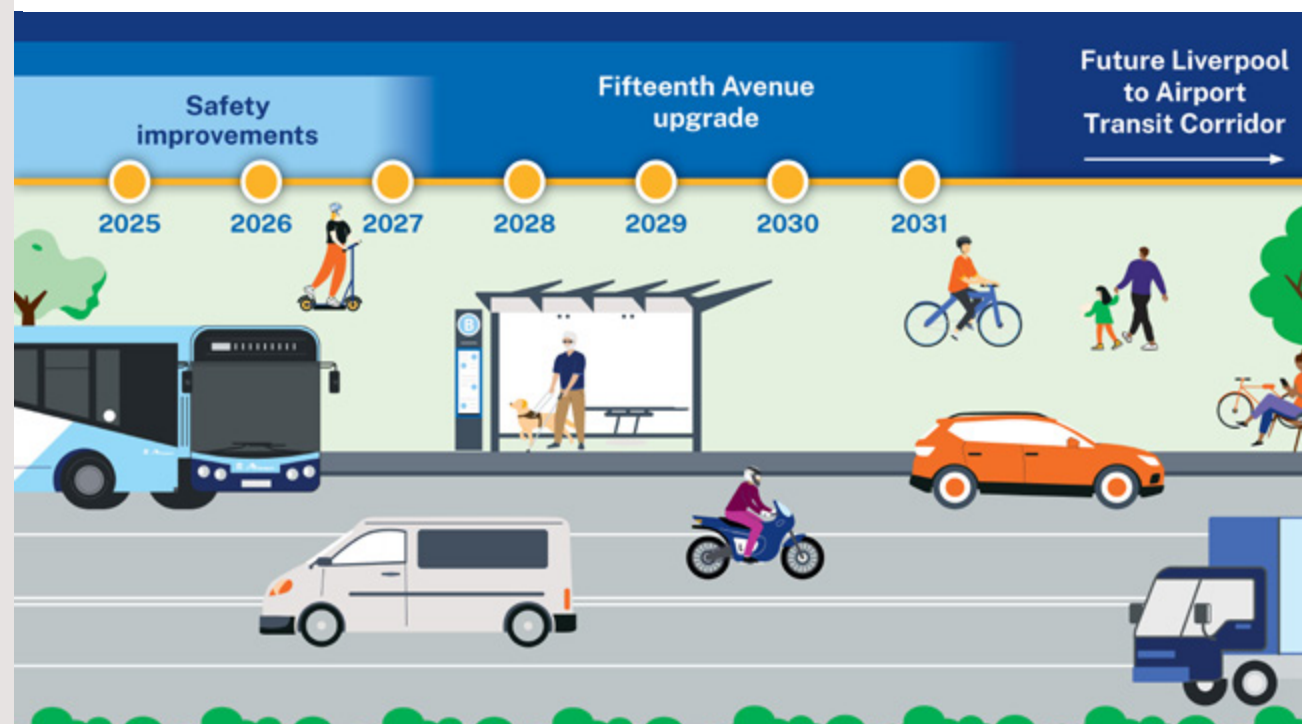
#### Stage 1

- █ **Fifteenth Avenue upgrade**  
Between Cowpasture Road and Devonshire Road
- █ Active transport connection
- █ Proposed intersection upgrades between  
Second Avenue and Devonshire Road  
(under investigation)

#### Future stages

- █ Fifteenth Avenue upgrade – West
- Proposed bus transit way

- M Sydney Metro – Western Sydney Airport alignment  
(under construction)
- Proposed rail connection
- T Existing Sydney Trains
- O Metropolitan City
- █ Western Sydney Airport Precinct
- Bradfield Precinct Priority Road



## Did you know?

We expect to start construction in 2027. Email [projects@transport.nsw.gov.au](mailto:projects@transport.nsw.gov.au) to stay informed, and request to be added to the Fifteenth Avenue Upgrade email list.



# What's happening now?

We know the local community is experiencing congestion and delays along Fifteenth Avenue, as more than 22,000 vehicles use the road every day.

While planning work on the major upgrade continues, we are prioritising some early work to improve safety and provide relief for road users and the community that will take place in stages from mid 2025.

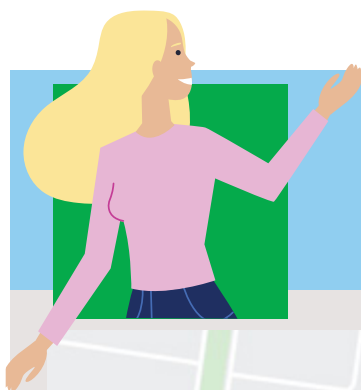
## Reducing speed limits

We are reducing the speed limits to 60km/h on sections of Fifteenth Avenue, Ramsay Road, Western Road, Devonshire Road, Austral and King Street, Rossmore. New speed limits take effect once we install the signs.



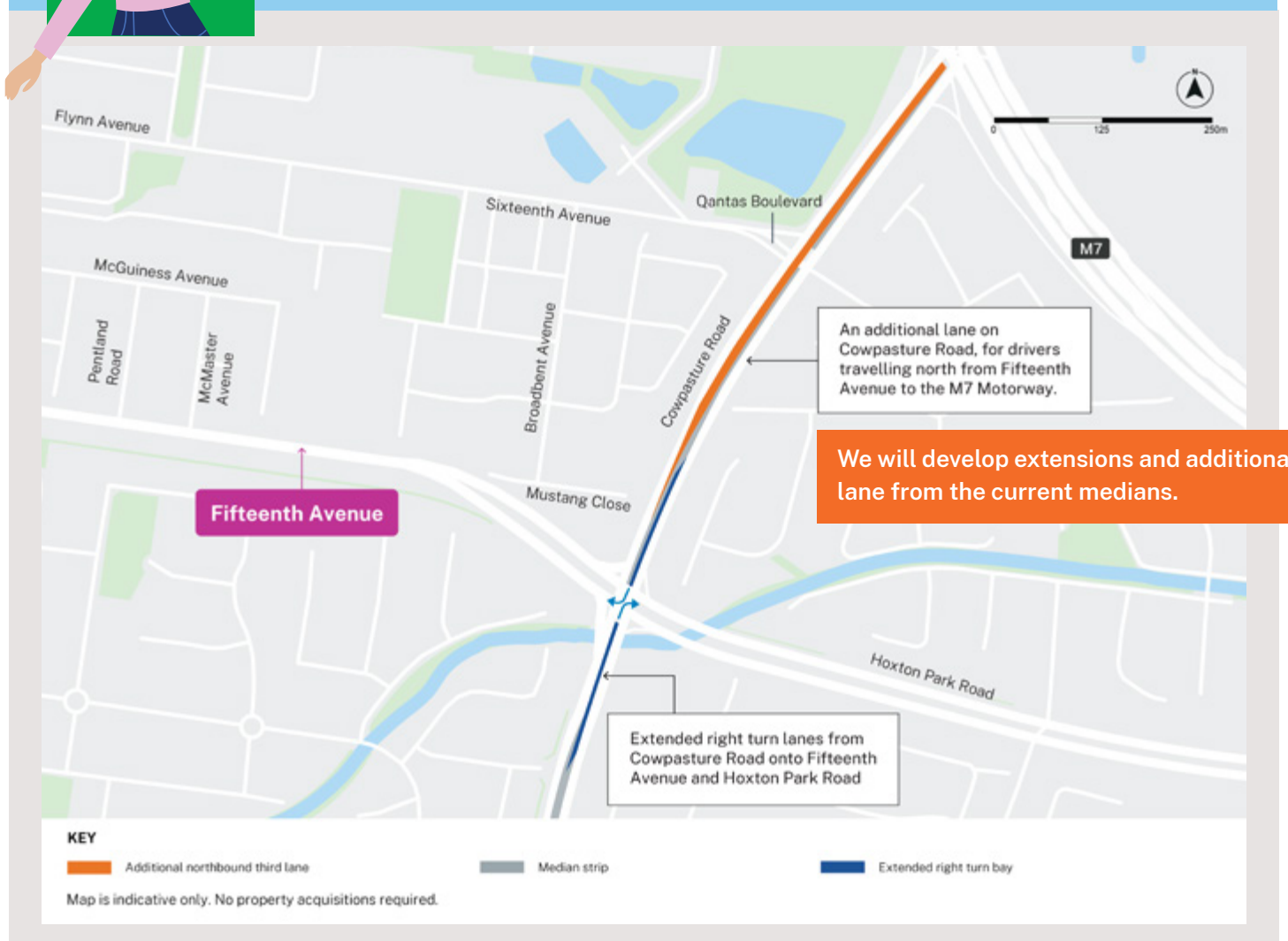
## Early improvements

We are investigating improvements to pedestrian safety. We will also improve line markings and signs in certain areas. These changes will make travel easier and safer for all road users and pedestrians. We will notify the local community before work starts.



## Better connection to the M7 Motorway

We are adding an additional northbound lane on Cowpasture Road between Fifteenth Avenue and the M7 Motorway, as well as extending the turning lanes from Cowpasture Road into Fifteenth Avenue and Hoxton Park Road. This will make it easier for drivers to change lanes and access the M7 Motorway.







Aerial view of Fifteenth Avenue looking east towards Cowpasture Road



## What happens next?

- New 60km/h speed limit along the entire road.
- New line marking and signs along Fifteenth Avenue.
- We will start sharing regular updates as our plans progress.
- We are investigating improvements to pedestrian safety.

## Keeping you informed



- Regular updates to our website
- Letterbox drops
- Sign up for email updates via scanning the QR code or go to:  
**[transport.nsw.gov.au/fifteenthavenue](https://transport.nsw.gov.au/fifteenthavenue)**



## Contact us

For enquiries, complaints, feedback and to subscribe to our mailing list use the contact details below.



Project Infoline **1800 684 490**

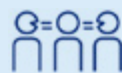


**[projects@transport.nsw.gov.au](mailto:projects@transport.nsw.gov.au)**



**[transport.nsw.gov.au/fifteenthavenue](https://transport.nsw.gov.au/fifteenthavenue)**

[www.transport.nsw.gov.au/privacy-statement#Your\\_Privacy](https://www.transport.nsw.gov.au/privacy-statement#Your_Privacy)



## Interpreter service

For languages other than English call **131 450**  
Mandarin • Macedonian • Arabic • Greek • Italian

获取英语以外的其他语言口译协助服务可以致电**131 450**

За преведување на јазици освен англискиот јавете се на **131 450**

لطلب خدمة الترجمة الشفهية للغات غير الإنجليزية اتصل  
بالرقم **131 450**

Για υπηρεσίες διερμηνείας σε άλλες γλώσσες εκτός από τα Αγγλικά καλέστε το **131 450**

Per il servizio di interpretariato per lingue diverse dall'inglese chiamare il **131 450**