



Foreshore Road Heavy Vehicle Inspection Bay

Safer Local Roads and Infrastructure Program

July 2025



Transport for NSW acknowledges the Kameygal people of the Eora Nation as the Traditional Custodians of the lands on which we work and pays respect to Elders past and present.

The Australian Government and Transport for NSW are building a new Heavy Vehicle Inspection Bay on Foreshore Road in Port Botany to improve safety and efficiency for all road users.

The inspection bay will be able to screen heavy vehicles travelling westbound on Foreshore Road, a principal freight route and part of the National Land Transport Network.

Key Features

The heavy vehicle inspection bay includes:

- An inspection lane with a weighbridge for checking heavy vehicles
- An additional lane on Foreshore Road westbound to enter and exit the bay
- An office for staff and equipment
- Safety barriers to separate the inspection bay from traffic on Foreshore Road
- Lighting, electrical and fibre communication connections
- A speed limit reduction to from 80km/h to 60km/h on Foreshore Road to allow heavy vehicles to safely enter and exit the bay.

Project Benefits

Transport uses Heavy Vehicle Safety Stations and inspection bays to ensure heavy vehicles are operating legally and safely.

Non-compliant drivers and vehicles are a significant risk to other road users, the environment and road infrastructure.

The new inspection bay can detect non-compliant vehicles as they exit the Port to use Foreshore Road and reach the motorway network, improving enforcement of regulations and improving safety for all road users.

What work are we doing?

Work will start from **Monday 28 July 2025** and is expected to be completed by late 2026, weather permitting.

In late July and August 2025, we will set up the site compound in Mill Stream Lookout carpark and will carry out investigation work on Foreshore Road. The carpark will be temporarily closed during the work.

From September 2025, we will start utility work along Foreshore Road and building the inspection bay, weigh bridge and office building.

Please refer to map overleaf.



When are we working?

Our standard work hours are **7am to 6pm, Monday to Friday** and **8am to 1pm, Saturday**.

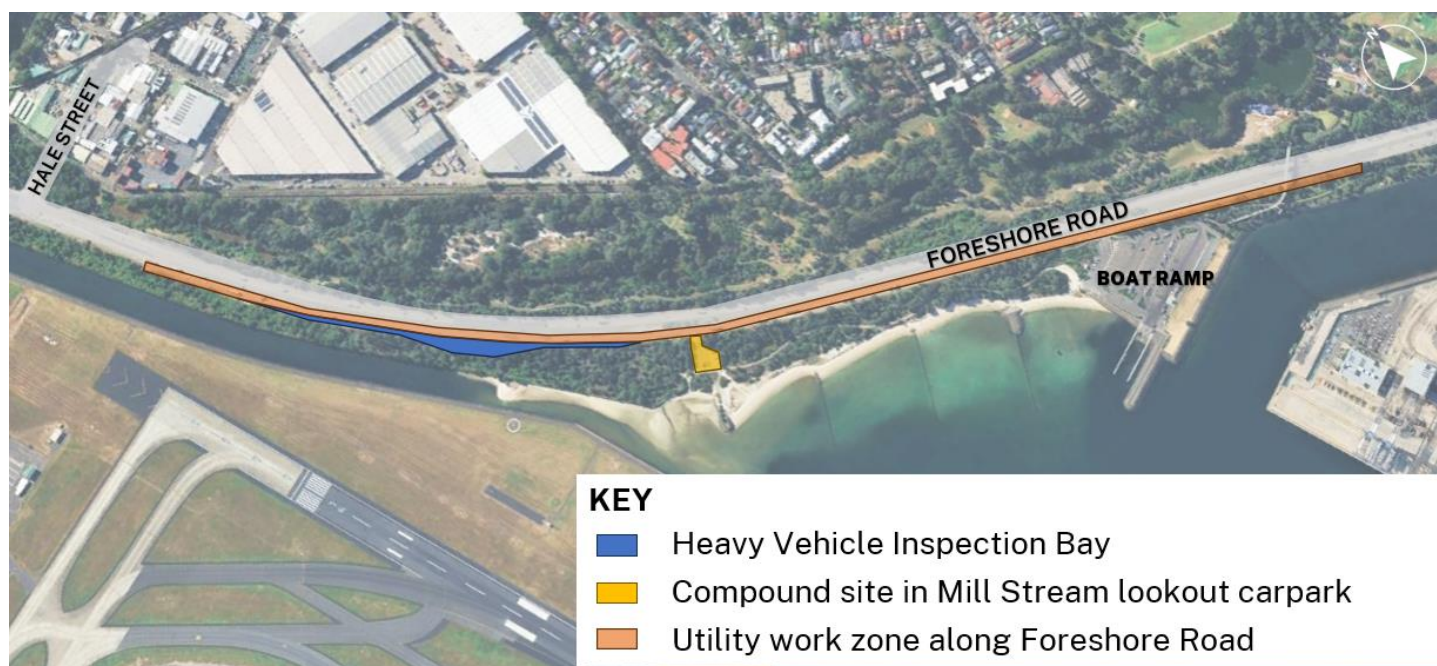
Most work will be done during the day but some work must be done at night for the safety of workers and road users.

Our night work hours are **8pm to 5am, Sunday to Thursday**. Night work will be intermittent, and no night work will be done on Friday or Saturday evenings or on public holidays.

Managing our impacts

Work will be noisy at times, but we will reduce our noise as much as possible by using noise blankets, turning off equipment when not in use, and completing noisier tasks by midnight.

Location of work area



Traffic changes

There will be some temporary traffic changes to ensure the work zone is safe.

During night work there will be lane closures and reduced speed limits which may affect travel times.

Please keep to the speed limits and follow the direction of traffic controllers and signs.

Mill Stream Lookout carpark closure

From **Monday 28 July 2025**, The Mill Stream Lookout carpark will be closed for up to 12 months to set up a compound site to support construction.

Alternative parking is available at the Foreshore Road Boat Ramp carpark.

During this time, Mill Stream Lookout will still be accessible via the shared path and visitors can park at the Foreshore Road Boat Ramp carpark.

Contact us



Project Infoline **1800 577 441**



projects@transport.nsw.gov.au



transport.nsw.gov.au/foreshoreroad



For the latest traffic updates:

Call 132 701, visit livetraffic.com or download the app Live Traffic NSW



Want to learn more about projects in your area?
Scan the QR Code.



Interpreter service

For languages other than English call 131 450
Arabic • Cantonese • Hindi • Mandarin • Vietnamese

لطلب خدمة الترجمة الشفهية للغات غير الإنجليزية اتصل بالرقم
131 450

獲取英語以外的其他語言傳譯協助服務可以致電**131 450**

अंग्रेज़ी के अतिरिक्त अन्य भाषाओं के लिए दुभाषिया सेवा **131 450**
पर कॉल करें

获取英语以外的其他语言口译协助服务可以致电**131 450**

Để có dịch vụ thông ngôn cho các ngôn ngữ khác tiếng Anh,
gọi số **131 450**