

Proposed improvements to Goonoo Goonoo Road (New England Highway) in Tamworth

Have your say – Review of Environmental Factors and refined concept design

Goonoo Goonoo Road is an important part of the Tamworth road network, facilitating movement of local residents and freight, enabling growth and development, and providing a vital link between the regional city of Tamworth and surrounding towns and villages.

Project background

The NSW Government has committed \$3 million to continue planning to upgrade Goonoo Goonoo Road (New England Highway) between Jack Smyth Drive and Calala Lane in Tamworth. The upgrade will ensure faster and smoother journeys for more than 20,000 vehicles that use this section of road each day.

Transport for NSW has been carrying out investigation work to remove a pinch point from Tamworth's road network, providing easier access for those visiting the city's entertainment and equestrian precinct.

The improvements along this section of Goonoo Goonoo Road will increase capacity, improve safety and traffic flow, support planned development in this area and facilitate both local access and regional connectivity.

The work Transport has been carrying out includes refining the concept design and preparing the Review of Environmental Factors. A number of specialist studies have been carried out as part of this work.

Review of environmental factors

The Review of Environmental Factors (REF) considers the potential environmental, social and economic impacts of the proposal.

The assessment found that the proposal would not significantly affect the environment or community. The REF also describes the measures that would be put into place to manage potential impacts.

Following the previous public display of the draft concept design, Transport has reviewed the submissions and acted on a number of comments provided. These have been reflected in the refined concept design and REF now being displayed for comment. Of particular note, some of the key features outlined in the REF include:

Truck parking bays

Formalisation of and provision of truck parking bays along the new alignment.

Noise

The new road surface will be designed to minimise road noise impacts.

Entrance statement

Extend median strip along the length of the alignment to maintain the connectivity with existing streetscape.

During construction

Stage construction to maintain property accesses for both business and residential.

Pedestrian connectivity

Completion of the 2.5 metre wide shared path along the western side of Goonoo Goonoo Road between Wilburtree Street and Greg Norman Drive.

Cyclist safety

The proposed duplication of Goonoo Goonoo Road includes 2.5 metre sealed shoulders. On-road cyclists choosing not to travel in the traffic lanes can travel in the shoulders.



Increase capacity

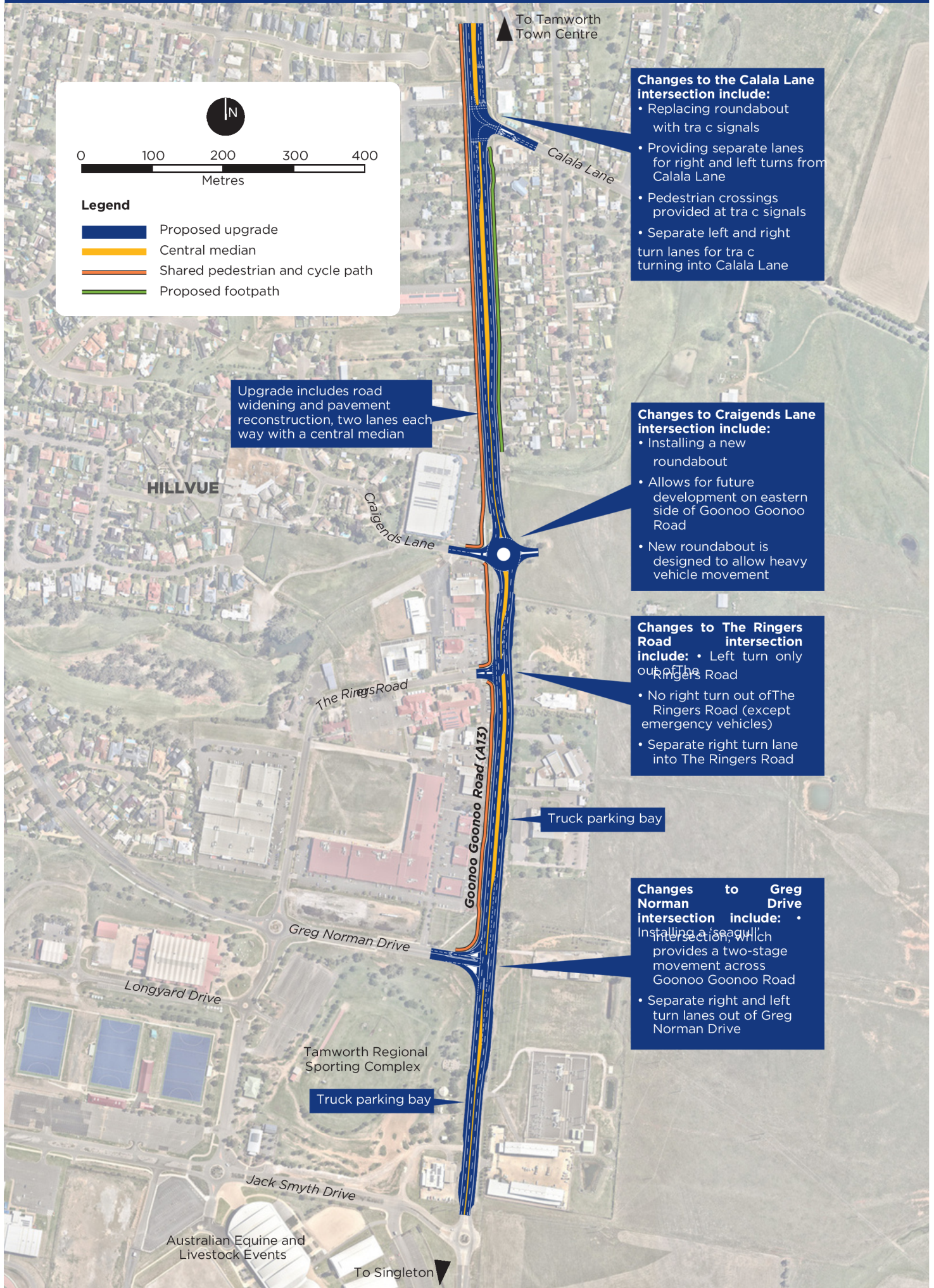


Support planned development



Improved safety for all road users

Goonoo Goonoo Road improvements



Read the REF

The REF will be on display at the following locations until **Friday 10 December 2021**

Tamworth Regional Council
Ray Walsh House
437 Peel Street
Tamworth
Tamworth Library
466 Peel Street
Tamworth

The REF is also available to download from the project website: nswroads.work/ggroad

To provide feedback

To provide feedback on the REF as part of the Goonoo Goonoo Road project, you can:

- Call 1800 947 911
- Email goonoo@transport.nsw.gov.au
- Send a letter to Goonoo Goonoo Road Project Team, Transport for NSW, PO 576 Grafton, NSW 2460
- Completing the online survey at yoursay.transport.nsw.gov.au/ggroad

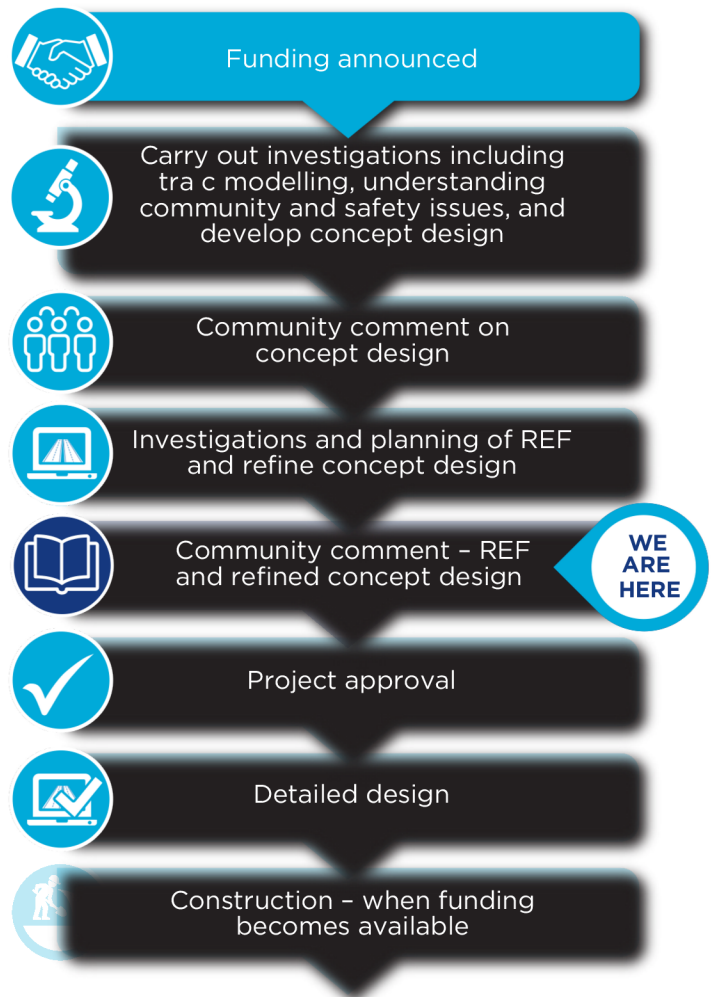
The community is requested to provide feedback by **Friday 10 December 2021**.

Next steps

Feedback on the refined concept design and REF will be considered as part of the project approval and in the detailed design for the Goonoo Goonoo upgrade project.

The timing of construction is not known, and is dependent on funding availability.

The community will be kept informed on the progress and delivery of this important program of work.



Contact us:

-  1800 947 911
-  goonoo@transport.nsw.gov.au
-  nswroads.work/ggroad
-  Goonoo Goonoo Road Project Team
Transport for NSW
PO Box 576 Grafton
NSW 2460



This document contains important information about public transport projects in your area. If you require the services of an interpreter, please contact the Translating and Interpreting Service on 131 450 and ask them to call Transport Projects on 0467 819 769. The interpreter will then assist you with translation.

Privacy: Transport for NSW (TfNSW) is subject to the *Privacy and Personal Information Protection Act 1998* ("PPIP Act") which requires that we comply with the Information Privacy Principles set out in the PPIP Act. All information in correspondence is collected for the sole purpose of assisting in the delivery of this project. The information received, including names and addresses of respondents, may be published in subsequent documents unless a clear indication is given in the correspondence that all or part of that information is not to be published. Otherwise TfNSW will only disclose your personal information, without your consent, if authorised by the law. Your personal information will be held by TfNSW at 76 Victoria Street Grafton NSW 2460. You have the right to access and correct the information if you believe that it is incorrect.