

Jervis Bay Road intersection upgrade

Project update

September 2025



An aerial image looking northwest, taken in August 2025.

The Australian and NSW governments are investing \$164 million in the Princes Highway and Jervis Bay Road intersection upgrade at Falls Creek. The new intersection will improve safety and reduce congestion along the Princes Highway corridor, providing the main east-west link to the coastal villages of Huskisson, Vincentia, Hyams Beach and Jervis Bay.

What has been happening

Since June 2025, we have:

- ✓ completed reinforcing soil walls on both sides of the bridge
- ✓ poured concrete bridge abutments in preparation for installation of super-T girders to form the bridge deck
- ✓ diverted the Willowgreen Road entrance through the U-turn bay
- ✓ started revegetation activities
- ✓ started road resurfacing works on the Princes Highway north of the intersection
- ✓ continued ongoing construction on Jervis Bay Road and the eastern roundabout
- ✓ continued work on the new box culvert near Willowgreen Road
- ✓ completed all electrical relocations.



**294,669 hours worked
since start of project in
February 2024**

Transport for NSW acknowledges the Traditional Custodians of the lands on which the project is being built and pay our respect to Elders past and present.

Construction stages

Stage 0

Initial planning and investigations

Stage 1

Utility relocation, eastern access road and drainage

Stage 2

Bridge construction, Princes Highway embankment construction, eastern access road and Jervis Bay Road

Stage 3

Western roundabout, northbound on and off ramps, bridge completion and opening

Stage 4

Old Princes Highway, multi-modal transport facility

Stage 5

Remove temporary road surfaces and start demobilisation

Stage 6

Completion expected late 2027

We are here

What happens next

In the coming months, our focus will remain on bridge construction and preparing for access changes to Jervis Bay Road from the Princes Highway.

Activities include:

- realigning a section of the Princes Highway west to allow access to new work areas
- pouring concrete for the deck slab
- placing 11 pre-cast super-T girders to form the bridge deck
- installing safety barriers and guard rails on the bridge
- importing materials to continue building the embankments
- switching Jervis Bay Road traffic to the new eastern roundabout, with the southbound off-ramp to Jervis Bay Road opening later this year (see map on page 4)
- constructing new road surfaces and kerbs
- installing drainage systems
- continuing revegetation work.



Interested in finding out more about the project's design? Scan the QR code to view the project overview video.



Supporting wildlife near the road

We are dedicated to promoting biodiversity and revitalising the local environment, ensuring impacts from the project's clearing and construction are responsibly offset. Our goal is to restore natural habitats and support the return of native wildlife to the area.

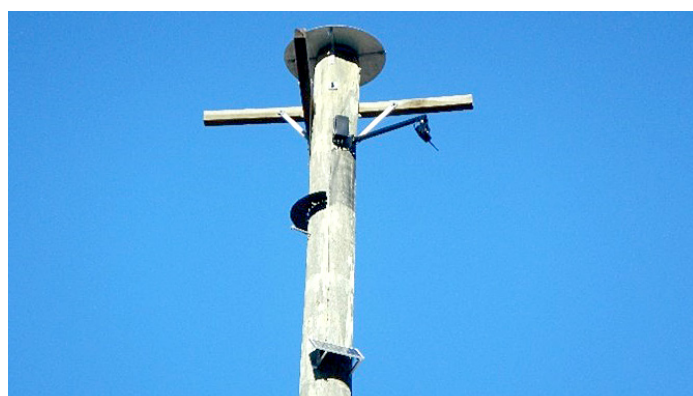
To assist tree-dwelling species such as possums and gliders, we will install both a rope crossing and tall wooden glider poles. Rope crossings connect tree canopies across the road, providing a safe overhead path for animals that spend most of their time in trees. Glider poles replicate the height and function of natural trees, allowing gliding mammals to cross roads and other open areas safely.

For ground based animals, hollow logs will be placed near drains to create shelter and encourage safe movement through the landscape.

Together, these features form part of our fauna connectivity zones along the Princes Highway. We are also developing similar solutions as part of the Jervis Bay Road to Hawken Road upgrade, ensuring that wildlife movement is supported along the broader highway corridor.



Example of a rope crossing, which allows tree-dwelling fauna to safely cross busy roads and highways.



Glider poles will be installed across the project to help gliding animals move safely within their habitat.

Bridge over Jervis Bay Road taking shape

To build the main bridge deck, 11 pre-cast super-T girders will shortly arrive at the project site. Manufactured in the greater Newcastle region, the installation of the girders is a key milestone for the project.

Transporting these massive structures is a challenge. Each girder is so large that only one can be carried per truck. To minimise traffic disruptions, trucks will travel overnight under strict safety conditions.

The journey from Newcastle to Falls Creek involves challenging sections, including the steep descent of Mount Ousley and winding bends between Kiama and Gerringong, requiring skilled drivers to ensure the girders arrive safely. On arrival, each girder, made of tensioned steel and reinforced concrete, will be lifted by crane directly onto the bridge abutments. These must be handled with care, as any damage could compromise the bridge deck's strength.

Once installed, the concrete deck slab will be poured in three stages, followed by traffic barriers and an asphalt surface. Weather permitting, the bridge is expected to open in mid-2026. Dates for transporting and installing the super-T girders are yet to be confirmed, and the community will be updated on traffic impacts closer to their arrival.

Footage of the girder's journey to site will feature in our next project update



The southern bridge abutment concrete pour occurred in early September.

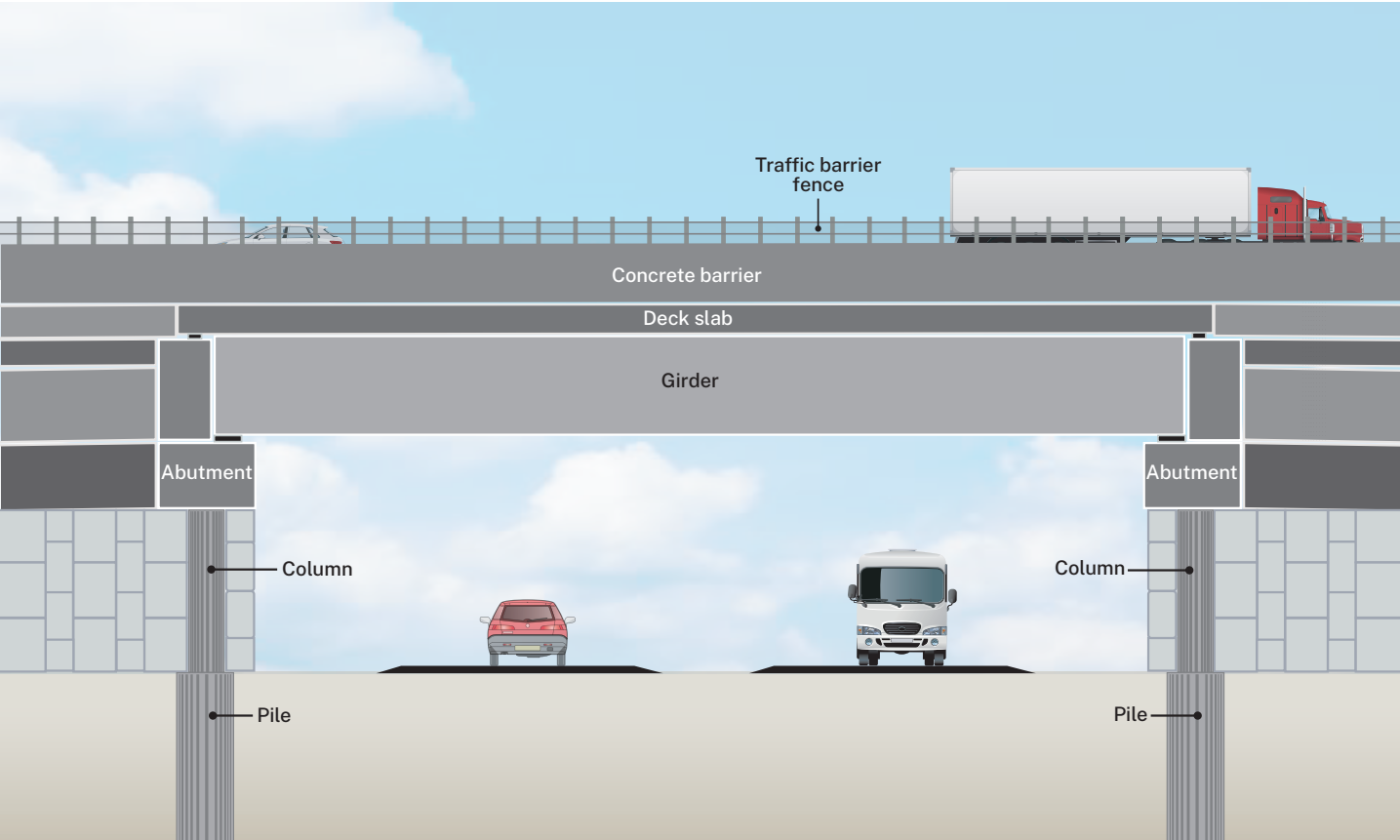


Illustration of bridge cross section (not to scale).

NAIDOC Week 2025

To mark NAIDOC Week 2025, the project team welcomed Drew Longbottom, a proud local First Nations man and representative of cultural organisation, Gadhungal Marring, to site for a yarn about this year’s theme: ‘The Next Generation: Strength, Vision and Legacy’.

Drew’s visit was more than just a conversation, it was a powerful moment of reflection, cultural celebration and learning. He shared stories of the local land and the families who have cared for it over generations, highlighting the strength and resilience of his community through times of challenge and change.

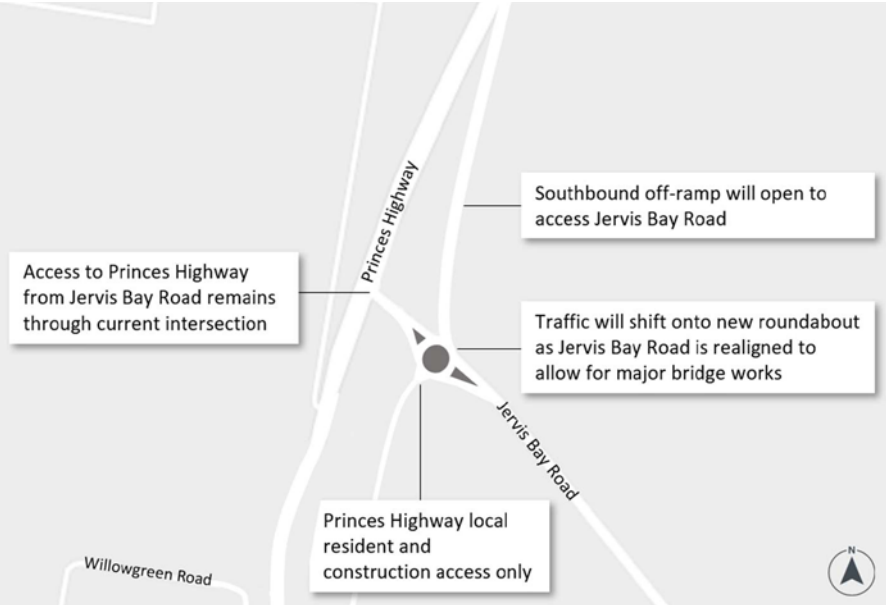
Drawing on cultural knowledge, storytelling and language, Drew shared valuable insights into the meaning of NAIDOC Week and the enduring role of Traditional Custodians in shaping a legacy for future generations.



The project team during NAIDOC week.



Drew Longbottom sharing cultural learning and stories with the team.



Road alignment following implementation of the eastern roundabout located on Jervis Bay Road later this year.

Do you have questions about the project?

Scan the QR code to visit our webpage to find the answers to the most commonly asked questions and subscribe to receive email updates.



Contact us

 Project infoline **1800 570 562**

 **JBRcommunity@srgglobal.com.au**



Visit the online portal.
Go to nswroads.work/jervisbay



For the latest traffic updates:
Call 132 701, visit live.traffic.com or download the app Live Traffic NSW



Interpreter service

For languages other than English please call **131 450**

www.transport.nsw.gov.au/privacy-statement#Your_Privacy