

Night work in Kemps Creek and Cecil Park

M12 Motorway – Central

February 2025



Australian Government



Transport for NSW acknowledges the Dharug Nation as the Traditional Custodians of the lands on which we work and pays respect to Elders past and present.

The Australian and NSW governments are building the M12 Motorway to provide direct access to the Western Sydney International Airport at Badgerys Creek and connect to Sydney's motorway network.

What work are we doing?

Transport for NSW will continue night work for up to **20 nights** from **Monday 3 February 2025** to **Friday 28 February 2025** along Elizabeth Drive, Clifton Avenue, Mamre Road, Range Road and Duff Road in Kemps Creek and Cecil Park.

During this period, we will:

- continue concrete grinding and grooving work
- finish earthwork and pavement across the project area
- finish installing bridge lighting
- remove, repair and install road pavement as needed
- finish concrete kerbs and gutters
- deliver, use and remove oversized equipment and materials as needed
- finish stormwater drainage work, continue landscaping and grass cutting
- finish installing new electrical and communication assets
- finish installing permanent traffic safety barriers
- remove redundant signage and install new signage
- install pavement line marking
- remove temporary fencing.

We will work at night for the safety of our workers and road users and to minimise traffic disruption.

Across the project, low impact earthwork, pavement and bridge work activities will continue from **6am, Monday to Saturday**. Concrete pours for bridge and pavement work, may on occasion, need to start from **5am** or finish after **6pm, Monday to Saturday** as continuity and weather are critical to ensuring the concrete pours and cures are done correctly to prevent failure of the pavement.

The map overleaf shows the location of our work.

Our work schedules

Our out of hour work hours are between **6pm** and **7am**, from **Monday night** to **Saturday morning**. We will not work more than two nights in a row and three nights in a week, in the same location.

Normal work hours are between **7am** and **6pm, Monday to Saturdays**. There will be no work on public holidays.

What equipment will be used?

During the work, we will use excavators, compactors, graders, concrete pumps, concreting equipment, light and heavy vehicles, hand power tools, cranes, vacuum trucks, water carts, sweepers, milling machines, asphalt pavers, bobcats, elevated work platforms, mobile cranes, lighting towers, slurry trucks, grinding and grooving equipment and traffic barrier installation equipment.



How will this work affect you?

During our work you will see increased activity in the area. The work may be noisy at times, but we will complete noisier activities before midnight and turn off equipment and machinery when not in use.

Traffic changes

There will be temporary traffic changes along the work zone during our work hours to ensure the safety of motorists and workers.

Please keep to speed limits and follow the direction of traffic controllers and signs.

Upcoming day work activities

We will continue grinding and grooving the concrete pavement on the new M12 Motorway between South Creek, Kemps Creek and Duff Road, Cecil Park to improve ride quality, reduce noise and extend the life of the pavement.

During this period, we will:

- grind pavement where surface roughness needs improvement

- groove pavement to provide a high level of texture and friction
- deliver, use and remove equipment as needed.

These activities will take place from **Monday 3 February to Friday 28 February**, weather permitting.

Our work hours will be between **8am and 6pm, Monday to Friday** and **8am to 1pm, Saturday**.

What will this mean for you?

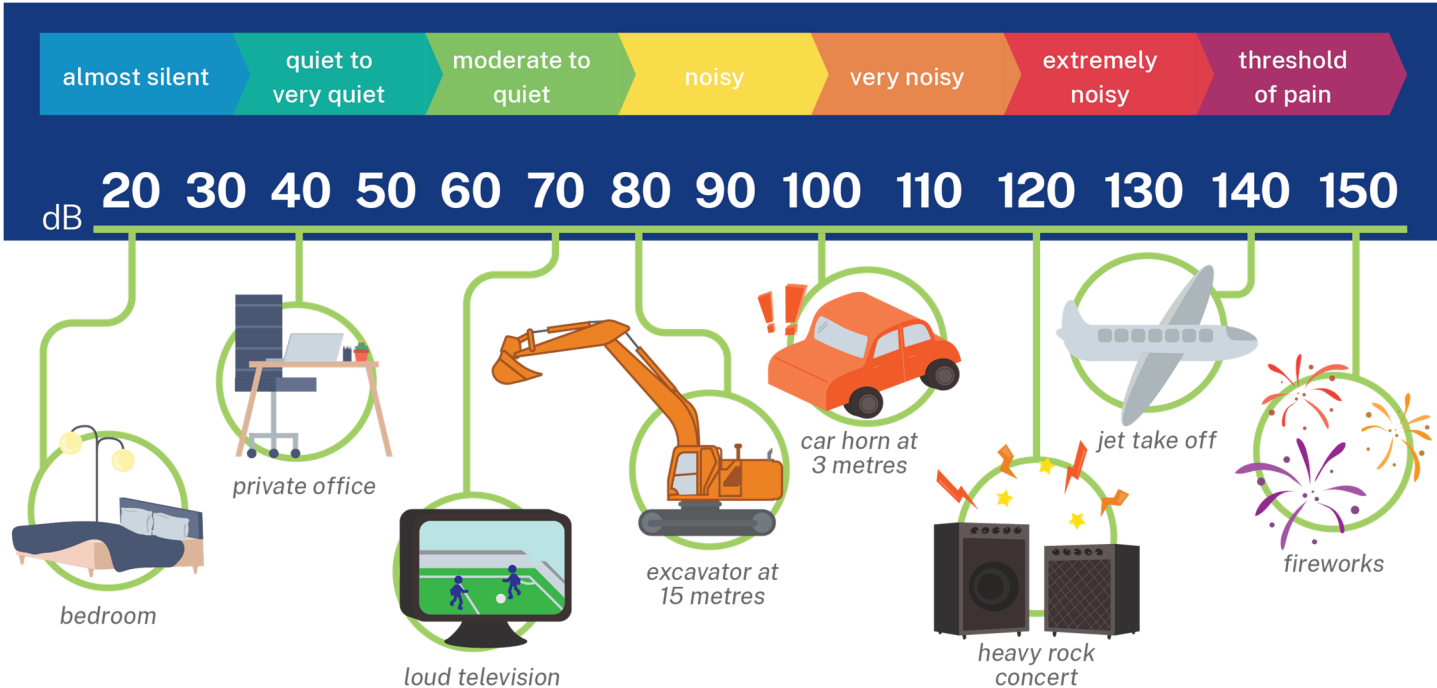
Our work requires the use of machinery that generates noise which may be more noticeable than normal. The noise that you are likely to hear may vary in volume depending on how close you are to the work area.

To limit the impact on the community during our grinding and grooving work we will work for three hours, break for an hour and work for another three hours.

We anticipate residents close to the work activity will be in the moderate to quiet noise level shown in the noise level comparison image below.

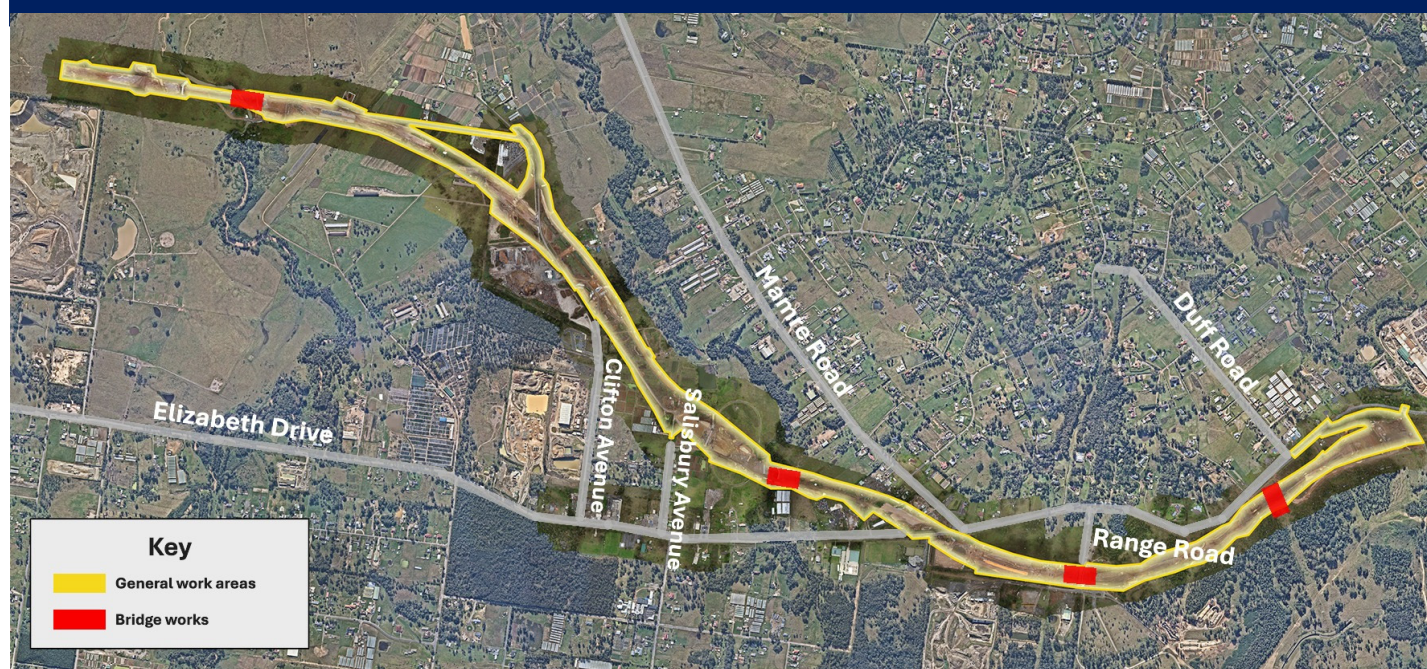
Out-of-hours work lookahead

OOHW activities	Location	Work hours	Timing	Noise impacts
Finishing work (bridge lighting and removal of temporary signage and fencing)	M12 Motorway	6pm to 7am Monday - Friday	Until March 2025	Moderate to quiet



Work area

Work zones Elizabeth Drive, Clifton Avenue, Salisbury Avenue, Mamre Road, Range Road and Duff Road.



Contact us



Project Infoline and 24-hour Construction Response Line **1800 517 155**



M12central@seymourwhyte.com.au



nswroads.work/m12



PO Box 973
Parramatta, NSW 2124



**Visit the online portal go to
nswroads.work/m12**



For the latest traffic updates:
Call 132 701, visit livetraffic.com or
download
the app Live Traffic NSW



Interpreter service

For languages other than English call 131 450
Arabic • Greek • Hindi • Mandarin • Vietnamese

لطلب خدمة الترجمة الشفهية للغات غير الإنجليزية اتصل
بالرقم **131 450**

Για υπηρεσίες διερμηνείας σε άλλες γλώσσες εκτός από
τα Αγγλικά καλέστε το **131 450**

अंग्रेज़ी के अतिरिक्त अन्य भाषाओं के लिए दुभाषिया सेवा
131 450 पर कॉल करें

获取英语以外的其他语言口译协助服务可以致电**131 450**

Để có dịch vụ thông ngôn cho các ngôn ngữ khác tiếng
Anh, gọi số **131 450**

www.transport.nsw.gov.au/privacy-statement#Your_Privacy