

# Night work along Elizabeth Drive, Badgerys Creek, The Northern Road and Luddenham Road, Luddenham

## M12 Motorway – West

February 2025



Australian Government



Transport for NSW acknowledges the Dharug people as the Traditional Custodians of the lands on which we work and pays respect to Elders past and present.

The Australian and NSW governments are building the M12 Motorway to provide direct access to the Western Sydney International Airport at Badgerys Creek and connect to Sydney's motorway network.

### What work are we doing?

Transport for NSW will work up to **20 nights** between **Monday 3 February** and **Friday 28 February 2025** along Elizabeth Drive, west of Badgerys Creek Road in Badgerys Creek and The Northern Road, Luddenham.

During this period, we will:

- repair, maintain, install, remove and adjust road pavement and kerbs, barriers, line marking, signage and road furniture
- carry out utilities work across Elizabeth Drive and The Northern Road with traffic control
- deliver materials to construction sites on The Northern Road, and Elizabeth Drive
- continue Elizabeth Drive bridge and road alignment work
- undertake concrete paving work including grinding, grooving and concrete cutting
- deliver, use and remove oversized equipment when needed.
- Preparation work for the upcoming Elizabeth Drive and Badgerys Creek Road intersection closure in March 2025.

We will also continue construction on the new Elizabeth Drive road alignment during the day with traffic control in place where needed.

### When and where we'll be working

Our night work hours are between **6pm** and **7am**, **Monday to Saturday morning**. Our normal work hours are between **7am** and **6pm**, **Monday to Saturdays**. There will be no work on public holidays.

### What equipment will be used?

We may use lighting towers, excavators, skid steers, trucks, compactors, light and heavy vehicles, hand powered tools, a road saw, a large crawler crane, small cranes, wheeled excavators, vacuum trucks, concrete pumps, water carts, sweepers, grinding and milling machines, asphalt pavers, water blasters for line marking removal, and line marking trucks. When we work at night and on the road we will have traffic control in place.

### What will this mean for you?

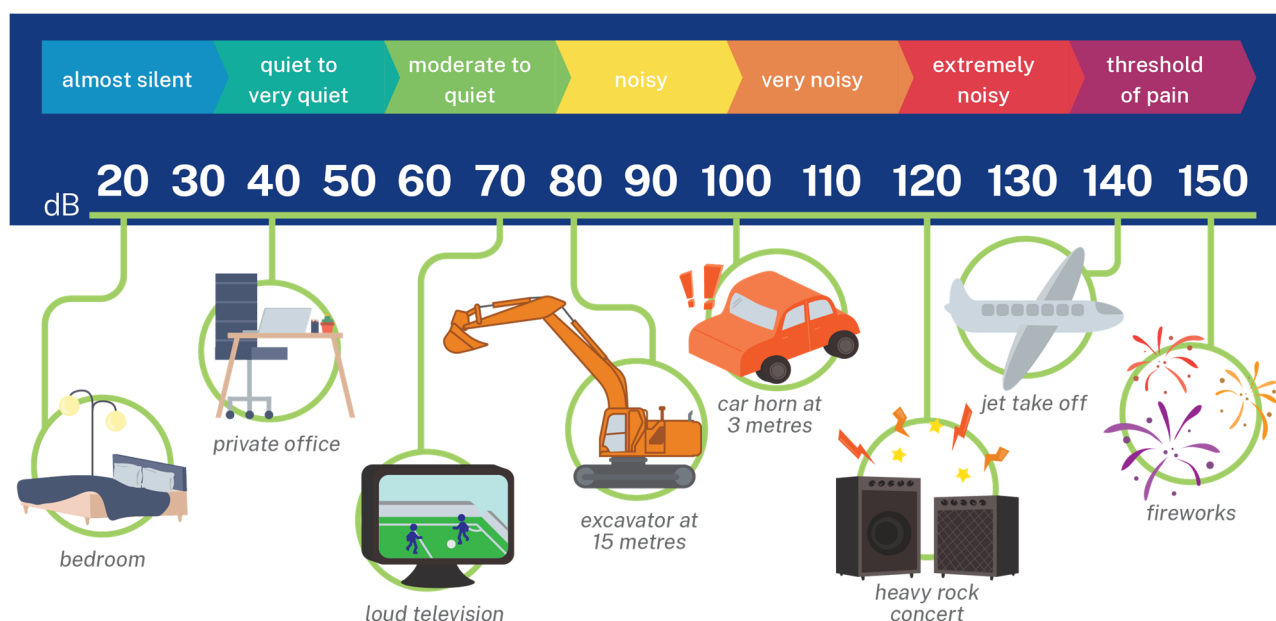
During night work, you may see increased activities in the area. Our work may be noisy at times, but we will do everything we can to minimise its impact, including completing noisier activities earlier in the night before **midnight**, where possible, and turning off equipment and machinery when not in use.

We will not perform high noise work activities more than two nights in a row and three nights in the same week at the same location.



## Out-of-hours work lookahead

OOHW Activities	Location	Work hours	Timing (2025)	Noise Impacts
Paving, grooving, milling and grinding operations	Elizabeth Drive / Warami Drive / Mainline	6pm to 7am Monday – Friday 7am to 6pm Saturdays	February – May	Moderate
Variable message sign installation	The Northern Road	6pm to 7am Monday – Friday 7am to 6pm Saturdays	February – March	Moderate
Earthwork	Elizabeth Drive / Warami Drive	7am to 6pm Saturdays	February – March	Quiet
Asphalt operations	Elizabeth Drive / Warami Drive	6pm to 7am Monday – Friday 7am to 6pm Saturdays	February – May	Moderate
General site movements; Finishing work	Elizabeth Drive / Warami Drive / Mainline	6pm to 7am Monday – Friday 7am to 6pm Saturdays	February – May	Quiet/Moderate
Preparing for and completing the Elizabeth Drive road closure	Elizabeth Drive and Badgerys Creek Road intersection	8pm to 6am Friday – Monday 56 hours shutdown	February – March	Moderate/Noisy



## Feedback

We will contact directly impacted residents regarding this work. If you have any questions or would like to provide feedback regarding this out-of-hours work, please contact **Elise** your Stakeholder and Community Relations Manager from CPBGG JV on our 24-hour Project Infoline **1800 517 155** or email **m12westinfo@cpbggJV.com.au**.

## Location of work area



## Contact us



24-hour Project Infoline  
**1800 517 155**



**m12westinfo@cpbggJV.com.au**



**nswroads.work/m12**



CPB Georgiou Site Compound  
Off roundabout at 1953 Elizabeth Drive  
Badgerys Creek NSW 2555



### For the latest traffic updates:

Call 132 701, visit [livetraffic.com](http://livetraffic.com) or download the app Live Traffic NSW



### Interpreter service

For languages other than English call 131 450  
Arabic • Greek • Hindi • Mandarin • Vietnamese

لطلب خدمة الترجمة الشفهية للغات غير الإنجليزية اتصل  
بالرقم **131 450**

Για υπηρεσίες διερμηνείας σε άλλες γλώσσες εκτός από  
τα Αγγλικά καλέστε το **131 450**

अंग्रेज़ी के अतिरिक्त अन्य भाषाओं के लिए दुभाषिया सेवा  
**131 450** पर कॉल करें

获取英语以外的其他语言口译协助服务可以致电**131 450**

Để có dịch vụ thông ngôn cho các ngôn ngữ khác tiếng  
Anh, gọi số **131 450**

[www.transport.nsw.gov.au/privacy-statement#Your\\_Privacy](http://www.transport.nsw.gov.au/privacy-statement#Your_Privacy)

