

Community update

Milton Ulladulla bypass

September 2025



Project overview

Transport for NSW (Transport) will deliver safer and more reliable journeys along the Princes Highway, bypassing the Milton and Ulladulla town centres.

The Australian and NSW governments have committed \$940 million for the Milton Ulladulla bypass. Both governments are committed to delivering this state significant project.

Aurecon was awarded the contract for development of the concept design and environmental assessment in December 2024 and has been working closely with Transport on refining the design to confirm the preferred option.

Preferred option confirmed

Transport has confirmed the preferred option for the Milton Ulladulla bypass.

The design of the preferred option is environmentally led and reflects our vision to minimise impacts to the environment and the local community. Due to the significant environmental and constructability constraints within the wider project area, we have carried out thorough investigations and planning to minimise the project's impacts.

The preferred option includes refinements to the corridor at the northern, central and southern connection points and other key locations along the bypass corridor. The confirmation of the preferred option also provides more certainty for property owners about potential impacts of the project.



Benefits



Reduced congestion



Safer and more reliable journeys



Improved safety for transport users



Improved local access



Supports tourism along the coast

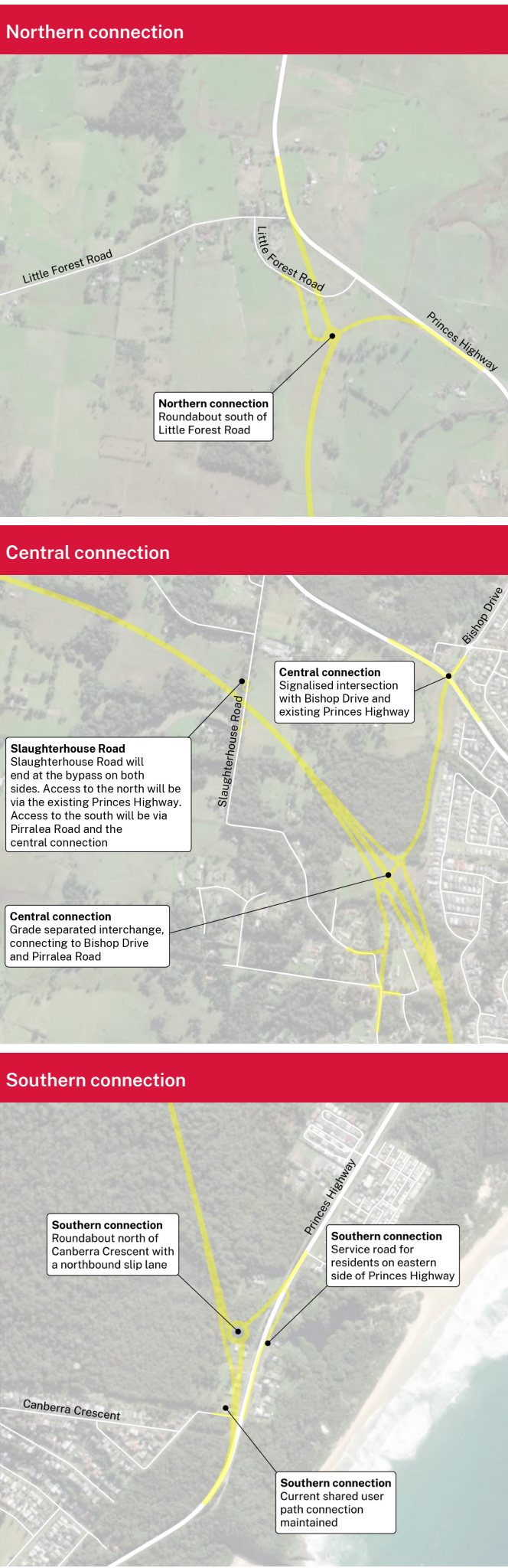


More efficient and reliable freight movement



Transport for NSW acknowledges the Traditional Custodians of the lands on which the project is being built and pay our respect to Elders past and present.

Milton Ulladulla bypass preferred option



Key features of the preferred option

- Northern connection** – The connection to the existing Princes Highway in the north will be a roundabout located just south of Little Forest Road. This option shortens the length of the bypass and avoids difficult geological conditions near Little Forest Road.
- Croobyar Road** - The bypass will go over Croobyar Road to reduce impacts to local traffic during construction. The location of the road crossing prevents relocation of utility services (such as overhead powerlines) and reduces geological challenges associated with the presence of Milton Monzonite under the surface.
- Wilfords Lane** - A loop road will connect Wilfords Lane under the bypass to reduce property and local traffic impacts.
- Slaughterhouse Road** – Slaughterhouse Road will end at the bypass on both sides. This avoids construction of an additional bridge and provides a safer outcome for road users. Local access will be maintained via the central connection near Bishop Drive.
- Central connection** – The connection to the existing Princes Highway in the centre of the bypass corridor is a key point for road users to enter or leave the bypass to access local towns and villages. The central connection will be a grade separated interchange to allow for free-flowing traffic movements in every direction via Pirralea Road and an extension to Bishop Drive.
- Green Street** – The bypass will go over Green Street with the local road moved to the east. This will provide a safe road alignment which maintains local traffic movements during construction.
- South of Green Street** – In this area there are significant ecological constraints in the densely vegetated forest, which is home to many native species, including the Greater Glider. We will minimise impacts as much as possible and maintain fauna connections across the bypass by building connectivity structures.
- Kings Points Drive** – A new bridge will allow the bypass to go under Kings Point Drive. This option maintains local access during construction, reduces the impact to nearby utilities and minimises the impact on surrounding vegetation.
- Southern connection** – The connection to the existing Princes Highway in the south will be a roundabout just north of Canberra Crescent. Access to the Princes Highway from Canberra Crescent will be maintained. Pedestrian connectivity options will be developed as the design progresses.



Environmental assessment



Due to environmental considerations and the significance of the bypass to the local area, an Environmental Impact Statement (EIS) will be developed. As part of this process an assessment will be carried out to evaluate the economic, environmental and social impacts of the project, and ensure endangered species and ecological communities are managed appropriately.

Environmental investigations are ongoing, and Transport will continue to be in contact with local property owners and residents if access is required.

Once the concept design and the environmental assessment is complete, the community will have the opportunity to provide feedback.

Property discussions



Confirmation of the preferred option provides more certainty about property impacts. We will continue discussions with impacted property owners and residents and will work closely with them to provide the necessary support throughout the project.

Community information sessions



We will hold information sessions over the coming months. Join us to ask questions about the project and design features:

Ulladulla Civic Centre

Tuesday 30 September between 3pm and 7pm

Ulladulla Shopping Centre

Friday 17 October between 10am and 2pm

Milton Village Showground Markets

Saturday 18 October between 9am and 2pm

More information

Visit our web page to find out more information and find answers to your frequently asked questions.



Scan the QR code to visit the project webpage

Next steps



Concept design and environmental assessment



Feedback on design and environmental assessment



Planning approval



Award tender for construction



Start of work (construction)



Open to traffic

Refinements to the bypass design will continue as we develop the concept design and carry out the environmental assessment.

The concept design and the environmental assessment will be published for community feedback during the EIS public exhibition phase in 2026.

Contact us



Project Infoline **1800 570 568**



miltonulladullabypass@transport.nsw.gov.au



nswroads.work/mub



PO Box 477,
Wollongong, NSW, 2500



Subscribe to receive updates and stay up to date with the latest information on the Milton Ulladulla bypass project.



For the latest traffic updates:

Call 132 701, visit livetraffic.com or download the app Live Traffic NSW



Interpreter service

For languages other than English call **131 450**
Arabic • Greek • Hindi • Mandarin • Vietnamese

لطلب خدمة الترجمة الشفهية للغات غير الإنجليزية اتصل
بالرقم **131 450**

Για υπηρεσίες διερμηνείας σε άλλες γλώσσες εκτός από τα Αγγλικά καλέστε το **131 450**

अंग्रेज़ी के अतिरिक्त अन्य भाषाओं के लिए दुभाषिया सेवा
131 450 पर कॉल करें

获取英语以外的其他语言口译协助服务可以致电**131 450**

Để có dịch vụ thông ngôn cho các ngôn ngữ khác tiếng Anh, gọi số **131 450**

www.transport.nsw.gov.au/privacy-statement#Your_Privacy