

## Appendix K – Heritage Database Searches – Non-Aboriginal Heritage

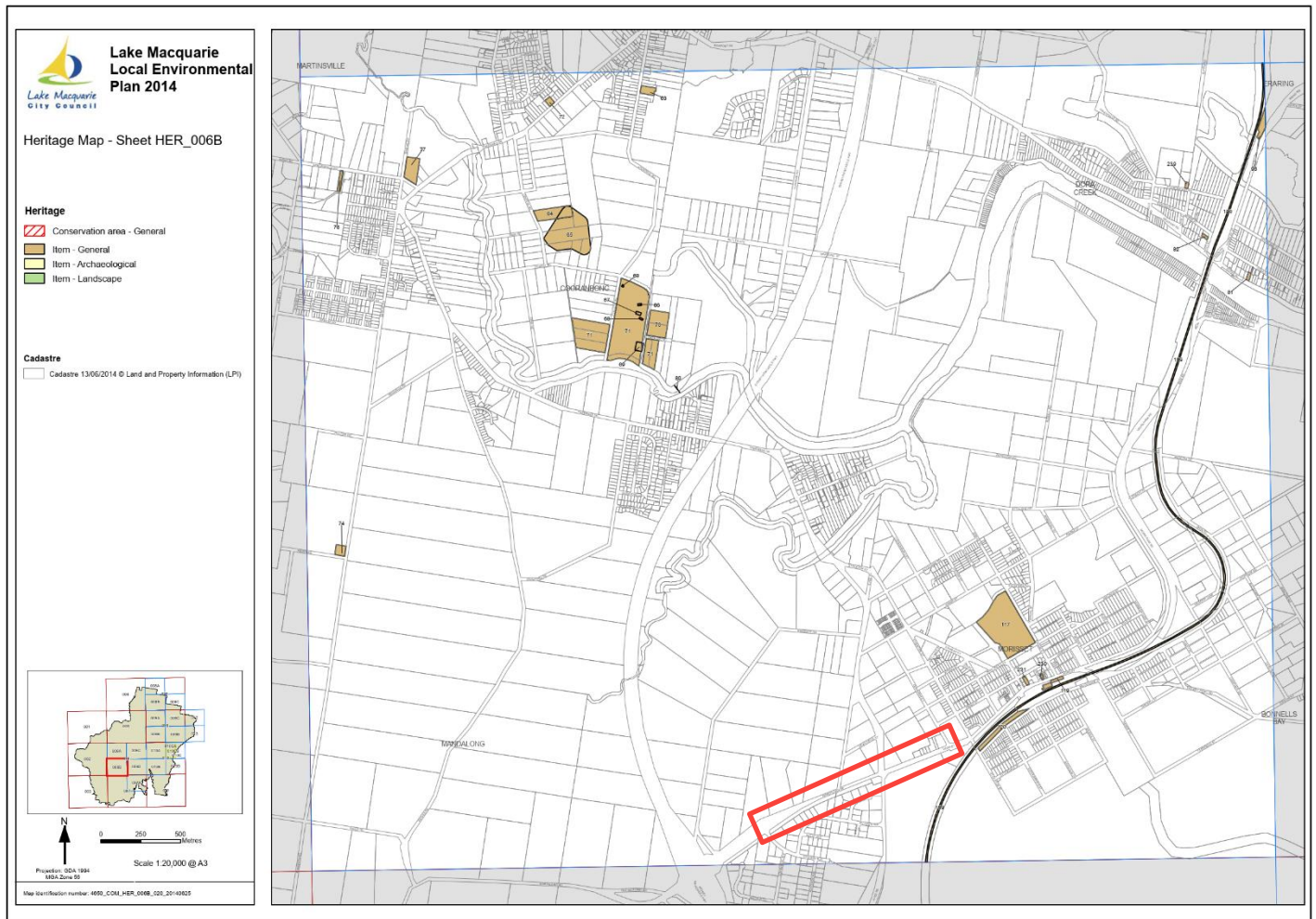


Figure 1 Lake Macquarie Local Environmental Plan 2014 Heritage Map

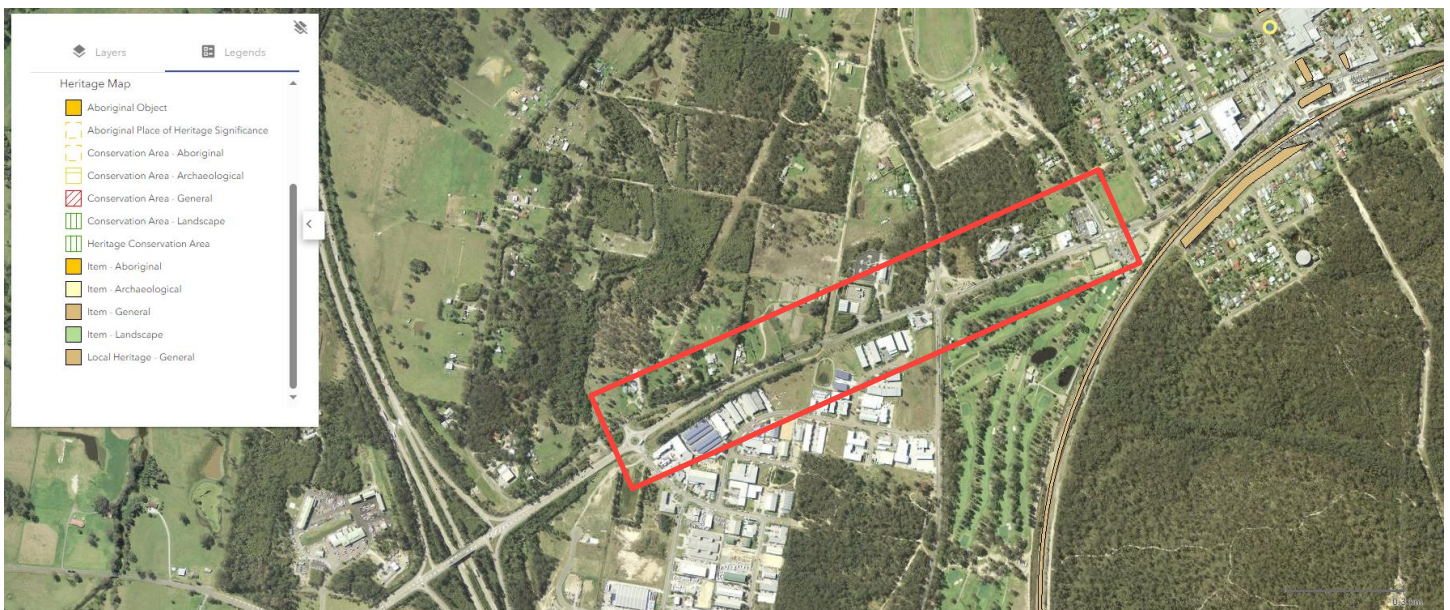


Figure 2 State Heritage Register Curtilage (Non-EPI) and Heritage Map layers (source: ePlanning Spatial Viewer, 2024).



Approximate vicinity of the proposal area



Figure 3 State Heritage Inventory (source: NSW Heritage, 2024).

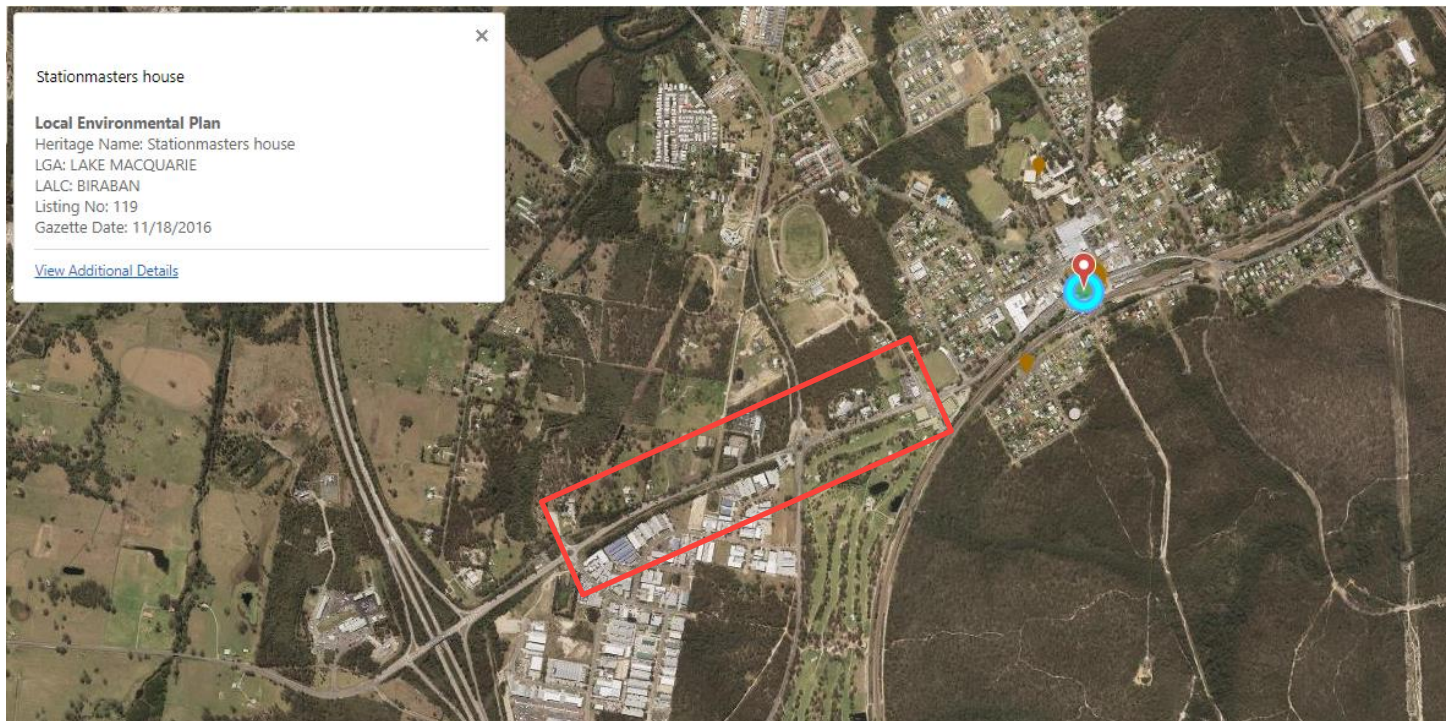


Figure 4 State Heritage Inventory (source: NSW Heritage, 2024).



Approximate vicinity of the proposal area

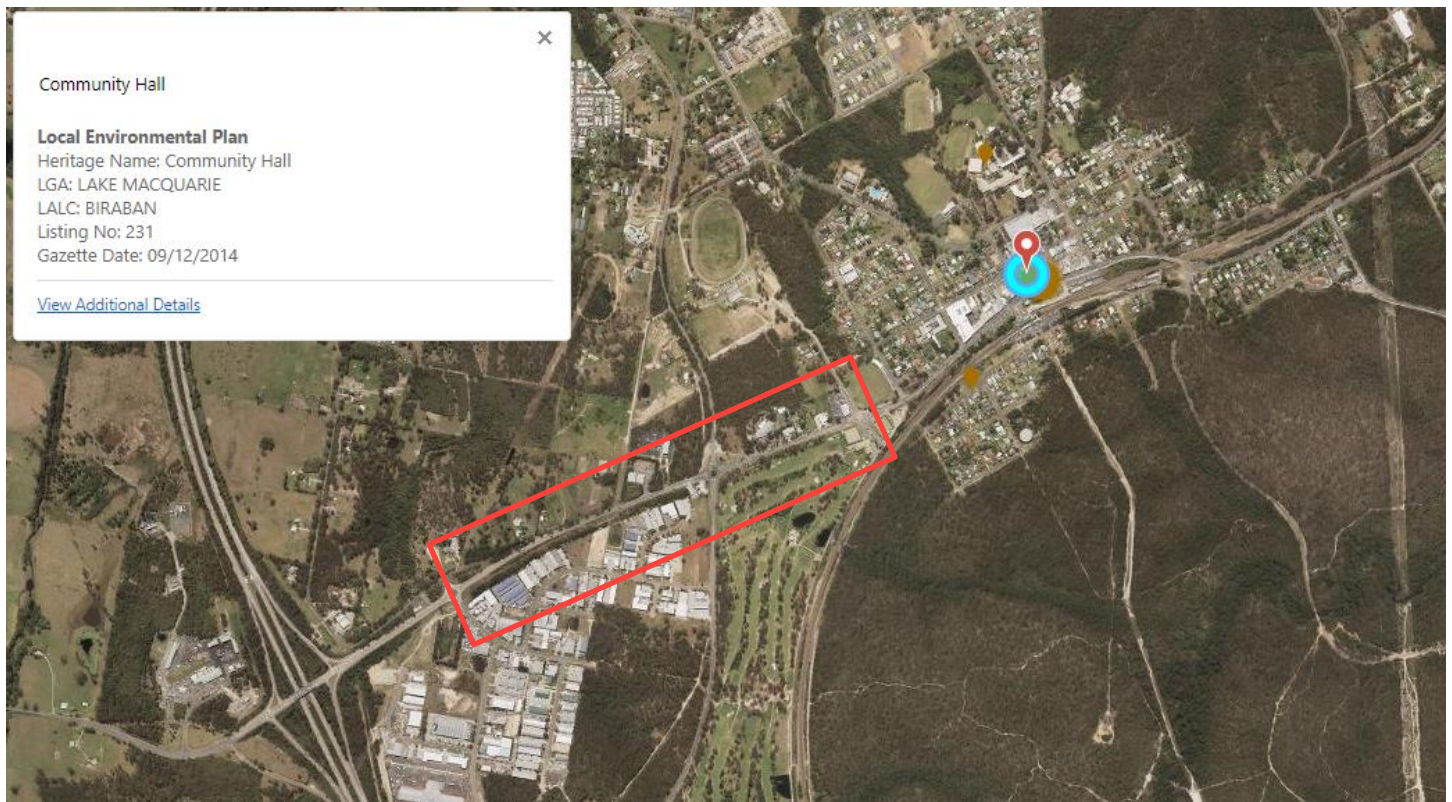

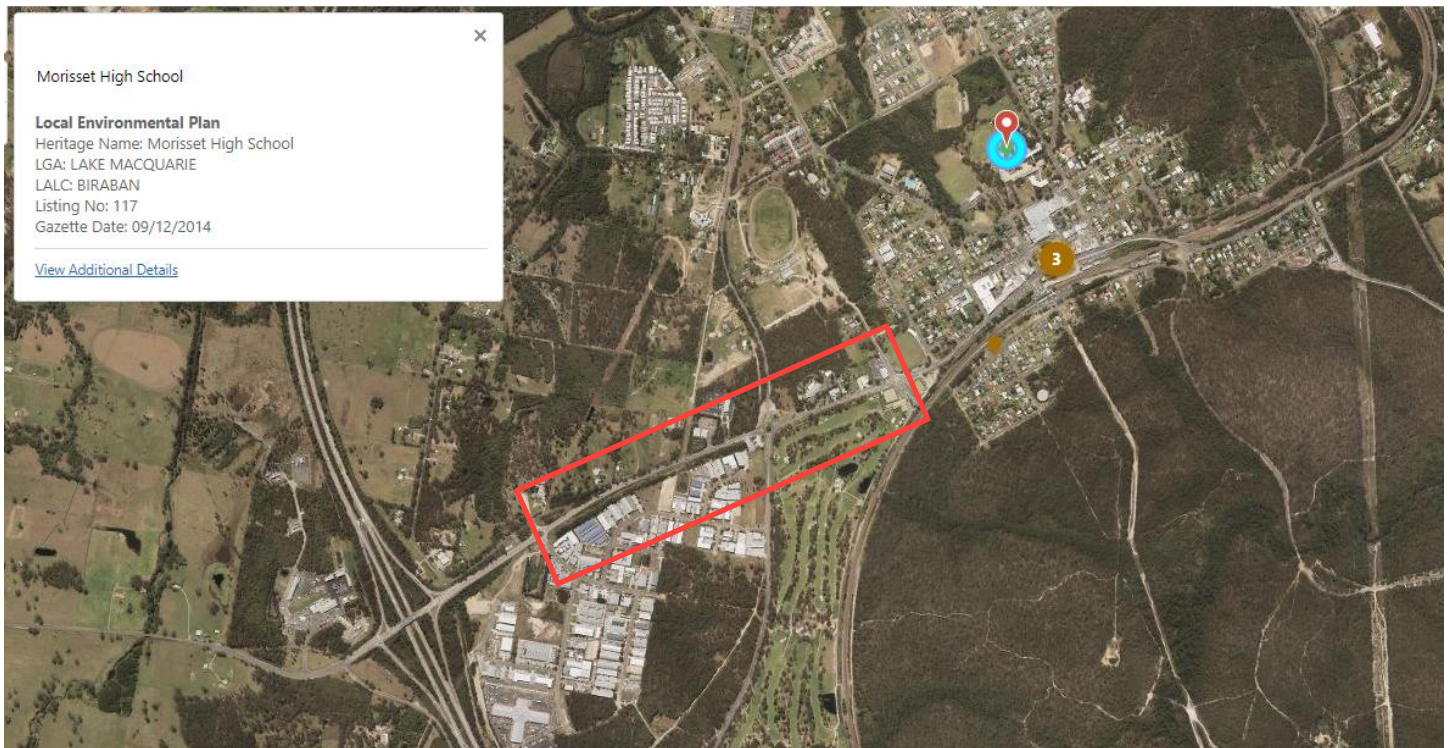


Figure 5 State Heritage Inventory (source: NSW Heritage, 2024).



Figure 6 State Heritage Inventory (source: NSW Heritage, 2024).

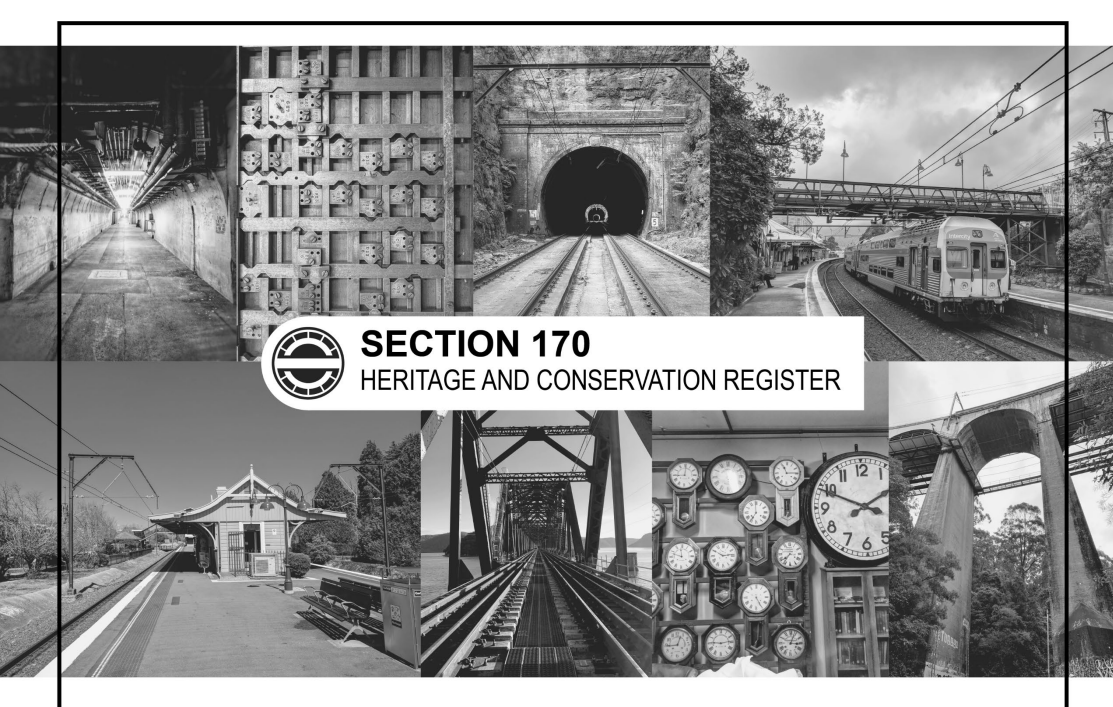
 Approximate vicinity of the proposal area



*Figure 7 State Heritage Inventory (source: NSW Heritage, 2024).*



Approximate vicinity of the proposal area



## SECTION 170

### HERITAGE AND CONSERVATION REGISTER

## DISCLAIMER

The register includes heritage assets managed by Sydney Trains on behalf of Transport Asset Holding Authority (TAHE). The register does not include TAHE assets managed by other agencies. It is recommended that you consult [John Holland](#) and [ARTC](#) Section 170 Heritage and Conservation Registers.

References to other sites are provided as an information service only and should not necessarily be construed as an endorsement. Conversely, omissions should not be construed as non-endorsement. Although every care is taken to provide links to suitable material from this website, the nature of the internet prevents us from guaranteeing the suitability, completeness or accuracy of any of the material that this site may be linked to. Consequently, Transport can accept no responsibility for unsuitable or inaccurate material that may be encountered. Also, Transport is not responsible for the accuracy or legitimacy of information found elsewhere on the internet and there is no guarantee that any of the websites listed will be available at any particular time. All of the material published electronically on this website is for informational purposes only. Transport does not guarantee that the information is complete or correct. Unless otherwise stated the authorised version of all reports, guides and other information, should be sourced from official printed versions or the agency directly.

## REGISTER CONTACT

STheritage@transport.nsw.gov.au

## VERSION CONTROL

As items are added or removed from the register, this document will be updated. Please check to ensure you are referring to the latest version of the register.

Version	Change from Previous	Date
1.0	-	1 December 2020
1.1	Minor update to correct errors	4 May 2021
1.2	Register review and update – Links updated to <a href="https://hms.heritage.nsw.gov.au">hms.heritage.nsw.gov.au</a>	1 September 2021
	Minor update to 11 sites CMP status	8 August 2023



## HOW TO USE THE REGISTER

- All places below are listed on the TAHE S170 Heritage & Conservation Register. Press **Ctrl + click** on the name of the place in the first column in order to be directed to the detailed heritage inventory sheet for each item.
- Items also listed on the NSW State Heritage Register are identified in the column 'SHR' with the relevant SHR number. Press **Ctrl + click** on the SHR number to be directed to the detailed heritage inventory sheet
- Some information in the inventories may not be complete. A detailed heritage assessment may be required to support understanding heritage significance prior to commencement of major works at a heritage site.
- Sites with a previous Conservation Management Plans or other conservation documentation prepared are identified in the column 'CMP' with "Y" for Yes. Some conservation documents may no longer be current and should only be referred to as reference documents. Please confirm with a Sydney Trains heritage specialist the currency of documents.

ITEM NAME	LOCATION	SUBURB	LGA	SHI #	CMP	SHR
Movable Heritage Collection	Various places	-	-	5063282		
Aberdeen Railway Station Signs	New England Highway	Aberdeen	Upper Hunter	4801892		
Adamstown Railway Station Group	10 Park Ave	Adamstown	Newcastle	4800185		
Albion Park Dairy (former)	Creamery Road	Albion Park	Shellharbour	4804464		
Albion Park Railway Station Group	Princes Highway	Albion Park	Shellharbour	4801171		01072
Albury Railway Precinct	Railway Place (Off Young Street)	Albury	Albury City	4806274	Y	01073
Annandale (Johnston Street) Underbridge	Johnston Street and The Crescent	Annandale	Inner West	4803229		
Annandale (Railway Parade) Railway Bridge	Railway Parade	Annandale	Inner West	4803231		
Armidale Railway Precinct	Railway Parade	Armidale	Armidale	4806199		01074
Arncliffe (Allen St) Underbridge	Allen Street	Arncliffe	Bayside	4803203		
Arncliffe (Forest Rd) Overbridge	Forest Road	Arncliffe	Bayside	4805728		
Arncliffe Railway Station Group	Firth Street	Arncliffe	Bayside	4801150	Y	01076
Artarmon Railway Station Group	Hampden Road	Artarmon	Willoughby	4801894		
Ashfield Railway Station Group	Brown St	Ashfield	Inner West	4801105		
Asquith Railway Station Group	Haldane Street	Asquith	Hornsby	4800188		
Auburn Railway Signal Box	Rawson St	Auburn	Cumberland	4800009		01023
Austinmer Railway Station Group	Railway Avenue	Austinmer	Wollongong City	4801131	Y	01077

ITEM NAME	LOCATION	SUBURB	LGA	SHI #	CMP	SHR
Awaba Railway Jib Crane & Former Cottage	Off Adelaide Street	Awaba	Lake Macquarie	4802063		
Potential Archaeological Site						
Banksia Railway Station Group	Railway Street	Banksia	Bayside	4801160	Y	
Bankstown Railway Station Group	North Terrace	Bankstown	Canterbury-Bankstown	4802067		
Bardwell Park Railway Station Group	Hartill Law Avenue	Bardwell Park	Bayside	4801896		
Bargo Railway Station	Great Southern Road	Bargo	Wollondilly	4807639		
Bathurst Railway Precinct	Havannah Street	Bathurst	Bathurst Regional	4806340	Y	01078
Beecroft Railway Station Group and Bushland Corridor	Wongala Cres	Beecroft	Hornsby	4801062	Y	
Bell Railway Station Group	Chifley Road	Bell	Blue Mountains	4801013		
Belmore Railway Station Group	Burwood Road	Belmore	Canterbury-Bankstown	4801084	Y	01081
Berala Railway Station Group	Woodburn Rd	Berala	Cumberland	4800211		
Berowra Railway Station Group	Pacific Highway	Berowra	Hornsby	4801897		
Berry Railway Station Group	Station Road	Berry	Shoalhaven	4801132	Y	01084
Beverly Hills Railway Station Group	King Georges Road	Beverly Hills	Georges River	4801120		01086
Bexley North Railway Station Group	Bexley Road	Bexley North	Bayside	4801898		
Blackheath Railway Station - Shops (266 Great Western Highway)	266 Great Western Highway	Blackheath	Blue Mountains	4804466		01088
Blackheath Railway Station Group	Great Western Highway	Blackheath	Blue Mountains	4801010		01088
Blacktown (Sunnyholt Road No.2) Overbridge	Sunnyholt Rd	Blacktown	Blacktown	4804465		
Blacktown Railway Signal Box	George Street	Blacktown	Blacktown	4801043		
Blaxland Railway Station Group	Wilson Way	Blaxland	Blue Mountains	4801063		
Blayney Railway Station	Mid Western Highway and Railway Lane	Blayney	Blayney	4801264		01089
Boggabri Railway Station	Oakham Street	Boggabri	Narrabri	4800287		
Bomaderry (Edwards Ave) Overbridge	Edwards Avenue	Bomaderry	Shoalhaven	4805729		
Bomaderry Railway Station And Yard Group	Meroo Street	Bomaderry	Shoalhaven	4801133		01090
Bombo Railway Station Group	Princes Highway	Bombo	Kiama	4801134	Y	01092
Bondi Junction Railway Station	Cnr Grafton St and Newland St	Bondi Junction	Waverley	4801156		
Bowenfels (George Coates St) Underbridge	Coates St	Bowenfels	Lithgow	4805730		
Bowenfels Railway Station Group and Residence	1-31 Coopers Road	Bowenfels	Lithgow	4801346	Y	00475

ITEM NAME	LOCATION	SUBURB	LGA	SHI #	CMP	SHR
Bowral Railway Station Group	Station Street	Bowral	Wingecarribee	4801279	Y	
Branxton Railway Station Group	Railway St	Branxton	Cessnock	4801176		01098
Broadmeadow Bala Road Railway Depot	Off Bala Road	Broadmeadow	Newcastle	4803213		
Broadmeadow Railway Locomotive Depot	Cameron Street	Broadmeadow	Newcastle	4801014		01100
Broadmeadow Railway Station Group	Graham Rd	Broadmeadow	Newcastle	4801899		
Broken Hill Railway Precinct	Crystal Street	Broken Hill	Broken Hill	4806348		01101
Brooklyn (Long Island) Archaeological Site	Long Island/Hawkesbury River	Long Island	Hornsby	5062614	Y	01040 (part)
Brooklyn Former Railway Platform (Long Island)	Hawkesbury River	Long Island	Hornsby	4803221	Y	
Brooklyn Railway Residence (176 Brooklyn Rd)	176 Brooklyn Road	Brooklyn	Hornsby	5062529		
Bullaburra Railway Station Group	Great Western Highway	Bullaburra	Blue Mountains	4800202		
Bullaburra Rhondda Valley Signpost	106-120 Railway Parade	Bullaburra	Blue Mountains	4807652		
Bulli Mine Disaster Memorial	Park Street	Bulli	Wollongong City	4807645		
Bulli Railway Station Group	Railway Street	Bulli	Wollongong City	4801146	Y	01829
Bundanoon Railway Precinct	Railway Avenue	Bundanoon	Wingecarribee	4806255		01104
Bungendore Railway Precinct	Majurra Street	Bungendore	Queanbeyan-Palerang	4806258		01105
Burwood Railway Parcel's Office and Underbridge	Burwood Road	Burwood	Burwood	4801085	Y	01106 01030
Cabramatta (Cabramatta Creek), Railway Parade & Sussex Street Underbridge	Sussex Street, Railway Parade	Cabramatta	Fairfield	4803205		
Camellia (Parramatta River) Underbridge Abutments	Between Camellia and Rydalmere stations Parramatta River	Camellia/ Rydalmere	Parramatta	4800212		
Campbelltown Railway Station Group	Hurley St	Campbelltown	Campbelltown	4801083		
Campsie Railway Station Group	Beamish Street	Campsie	Canterbury-Bankstown	4801101		
Canley Vale (Orphan School Ck; Railway Pde	Orphan School Crk; Railway Pde	Canley Vale	Fairfield	4800204		
Canterbury (Cooks River) Underbridges (1895 and 1916)	Over Cooks River near Broughton Street / Charles Street	Canterbury	Canterbury-Bankstown	4801568		
Canterbury Railway Station Group	Canterbury Rd and Broughton St	Canterbury	Canterbury-Bankstown	4801100		01109
Cardiff Railway Workshop Group	Off Main Rd	Cardiff	Lake Macquarie	4802064	Y	
Caringbah Railway Station Group	Kingsway	Caringbah	Sutherland	4801900		

ITEM NAME	LOCATION	SUBURB	LGA	SHI #	CMP	SHR
Coniston Railway Station Group	Bridge Street (North Of)	Coniston	Wollongong City	4801135		
Coolamon Railway Precinct	Wade Street	Coolamon	Coolamon	4806790		
Cooma Railway Precinct	Bradley St	Cooma	Snowy Monaro	4801260	Y	01116
Cootamundra Railway Precinct	Hovell Street	Cootamundra	Cootamundra-Gundagai	4806261	Y	01118
Couridjah Railway Culvert	750m north of station	Couridjah	Wollondilly	4805748		
Couridjah Railway Station	Bargo River Road	Couridjah	Wollondilly	4801310		01121
Cowan Railway Station Group	Pacific Highway	Cowan	Hornsby	4801906	Y	
Cringila Railway Station Group	Five Islands Road	Cringila	Wollongong City	4802049		
Cronulla - Linear Cultural Exotic Planting of Rail Embankment	Wilbar Avenue	Cronulla	Sutherland	4805753		
Cronulla (Searle/Burraneer Bay Road) Railway Underbridge	Wilbar Avenue	Cronulla	Sutherland	4804412		
Cronulla Railway Station Group	Cronulla Street	Cronulla	Sutherland	4801157	Y	01123
Croydon Railway Station Group	The Strand	Croydon	Inner West	4801110		01125
Culcairn Railway Precinct	Melville Street	Culcairn	Greater Hume	4806282		01126
Dapto Railway Station Group	Station Street	Dapto	Wollongong City	4801136		
Denistone Railway Station Group	West Parade	Denistone	Ryde	4801907	Y	
Doonside Railway Station Group	Doonside Cres	Doonside	Blacktown	4801908		
Dora Creek Railway Underbridge	Macquarie Street	Dora Creek	Lake Macquarie	4803388		
Dubbo Railway Precinct	Talbragar Street	Dubbo	Dubbo	4806342	Y	01130
Dulwich Hill Railway Station Group	Wardell Road	Dulwich Hill	Inner West	4801909	Y	
Dundas Railway Station Group	Station Street	Dundas	Parramatta	4801051		01133
Dungog Railway Station	Hook Street	Dungog	Dungog	4800221		
Dunmore (Shellharbour) Railway Station and Residence	Shellharbour Road - West Of, Northeast of Princes Highway Intersection w Shellharbour Road	Dunmore	Shellharbour	4801910		01245
East Hills (Georges River) Underbridge	Henry Lawson Drive	East Hills	Canterbury-Bankstown	4801836		
East Maitland Railway Precinct	John Street	East Maitland	Maitland	4806006		01135
Edgecliff (Rushcutters Bay) Viaduct	New South Head Road	Edgecliff/ Rushcutters Bay	Woolahra	4801125		

ITEM NAME	LOCATION	SUBURB	LGA	SHI #	CMP	SHR
Carlingford Produce Store	1 Thallon Street	Carlingford	Parramatta	4807643	Y	
Carlton Railway Station Group	Railway Parade	Carlton	Georges River	4801901		
Carramar (Sandal Crescent) Railway Bridge	Sandal Crescent	Carramar	Fairfield	4803254		
Carramar Railway Station Group	Wattle Avenue	Carramar	Fairfield	4800207		
Casino Railway Precinct and Locomotive Depot	Canterbury Street	Casino	Richmond Valley	4806172	Y	01111
Casula (Glenfield Creek) Underbridge	Casula Railway Station, South	Casula	Liverpool	4803206		
Casula (Woodbrook Rd & Congressional Dr) Viaducts	Woodbrook Road & Congressional Drive	Casula	Liverpool	4803256		
Central Railway Station and Sydney Terminal Group	Eddy Avenue	Sydney	Sydney	4801296	Y	01255
Chester Hill Railway Station Group	Chester Hill Road	Chester Hill	Canterbury-Bankstown	4801050		
Chullora - Winsor Park Remembrance Drive Plantings & War Memorial	Hume Highway, cm Brunker Road	Chullora/ Greenacre	Canterbury-Bankstown	4807644	Y	
Chullora Railway Workshops	Beaufort Place	Chullora	Canterbury-Bankstown	4801108	Y	
Chullora Railway Workshops Substation	Worth St (north of)	Chullora	Canterbury-Bankstown	5062518		
Circular Quay Railway Station and Viaduct	Alfred Street, City Railway Loop	Circular Quay	Sydney	4801109	Y	01112
Clyde Railway Station Group	Berry St	Clyde	Parramatta	4800129		
Clyde Railway Yard Remains & Signal Box	Parramatta Road	Clyde	Cumberland	4805747		
Coal Cliff Colliery Railway Corridor		Coaldiff	Wollongong City	5067576		
Coalcliff Railway Tunnel No.8	Lawrence Hargrave Drive	Coaldiff	Wollongong City	4800215		
Cockle Creek Former Railway Station and Bridge Piers	Near Creek Reserve Rd	Cockle Creek	Lake Macquarie	4803216		
Cockle Creek Railway Underbridge	Across Cockle Creek	Cockle Creek	Lake Macquarie	4800216		
Coledale Railway Station Group	Railway Street	Coledale	Wollongong City	4801148		
Colo Vale Railway Station	Railway Avenue	Colo Vale	Wingecarribee	4805750		
Como (Georges River) Underbridge	Illawarra Line 19.925km Concrete Bridge 1.5Km Before Station	Como	Sutherland	4801834		
Concord West Railway Station Park & Memodial Garden	Queen Street	Concord West	Canada Bay	4801042		
Condobolin Railway Precinct	Denison Street	Condobolin	Lachlan	4806360		

ITEM NAME	LOCATION	SUBURB	LGA	SHI #	CMP	SHR
Edgecliff Railway Station	South Head Road	Edgecliff	Woolahra	4801167		
Emu Plains (Lapstone Ck) Underbridge	Main West 59.244 kms Russell Street	Emu Plains	Penrith	4803210		
Emu Plains (Nepean River) Underbridge	Off Bruce Neale Dr, Steel Trusses 1.3 Km Past Station	Penrith	Penrith	4801576		01830
Emu Plains Railway Culvert	Lamrock Street	Emu Plains	Penrith	4804417		
Emu Plains Railway Station Group	Mackellar St	Emu Plains	Penrith	4801017	Y	01136
Enfield (Cooks River) Underbridge	Pemberton Street	South Strathfield	Strathfield	4805731		
Epping Railway Station Group	Beecroft Rd	Epping	Parramatta	4801911	Y	
Epping Railway Substation	High Street	Epping	Parramatta	4803383		
Erskineville (Macdonald St) Underbridge	Macdonald Street	Erskineville	Sydney	4800293		
Erskineville (Victoria St) Underbridge	Victoria Street	Erskineville	Sydney	4800292		
Erskineville Railway Station Group	Swanson Street	Erskineville	Sydney	4801158	Y	
Eskbank Railway Precinct	Inch Street	Eskbank	Lithgow	4801018	Y	01138
Euabalong West Railway Station	Euabba Street	Euabalong	Parkes	4802023		
Eveleigh Chief Mechanical Engineers Office	Wilson Street	Redfern	Sydney	4801126	Y	01139
Eveleigh Railway Workshops	Wilson St	Redfern	Sydney	4801102	Y	01140
Exeter Railway Station Group	Moss Vale Rd	Exeter	Wingecarribee	4801254	Y	01142
Fairfield (Prospect Ck) Underbridge	Prospect Crk; Fairfield St	Fairfield	Fairfield	4800227		
Fairfield Railway Station Group and Residence	The Crescent	Fairfield	Fairfield	4801086	Y	01143
Fassifern Railway Station Group	29 Fassifern Rd	Fassifern	Lake Macquarie	4801046		
Fassifern to Toronto Branch Railway Line	South and Railway Parades	Fassifern/ Toronto	Lake Macquarie	4800229		
Faulconbridge Railway Station Group	Great Western Highway	Faulconbridge	Blue Mountains	4801064		
Faulconbridge 'Weemala' Estate (part)	704 Great Western Highway	Faulconbridge	Blue Mountains	5066675		
Finley Railway Precinct	Endeavour St	Finley	Berrigan	4801283	Y	01144
Flemington Railway Station Group (& Signal Box)	The Crescent	Flemington	Strathfield	4801052		
Garden Suburb to Wyee, Railway Line	Extent of LGA	Garden Suburb	Lake Macquarie	4805752		
Gerrington Railway Dairy Siding Remains	18 Belinda Street	Gerrington	Kiama	4807651		
Glebe (Bellevue Street) Underbridge	Bellevue Street	Glebe	Sydney	4801828		
Glebe Railway Tunnel	Between Glebe Metro Light Rail Stop and Jubilee Park	Glebe	Sydney	4803228		

ITEM NAME	LOCATION	SUBURB	LGA	SHI #	CMP	SHR
Glebe Viaducts (Jubilee Park/ Wentworth Park)	Wentworth Park, Jubilee Park, Johnstons Creek	Glebe	Sydney	4801104		01034 01225
Glebe/Ullimo (Wentworth Park Rd) Underbridge	Railway location, Rozelle to Darling Harbour Goods Line 16.244 km Wentworth Park Road	Ullimo	Sydney	4805732		
Glenbrook Railway Deviation	From Knapsack Gully Viaduct to Glenbrook Railway Station	Glenbrook	Blue Mountains	4803226		
Glenbrook Railway Station Group	Burfit Pde	Glenbrook	Blue Mountains	4801053		
Glenfield (Bunbury Curran Ck No1) Underbridge	Liverpool to Campbelltown 42.698 km Railway Parade	Macquarie Fields	Campbelltown	4805733		
Gordon (Werona Ave) Underbridge	Railway location, North Shore Line 16.944km Werona Avenue	Gordon	Ku-Ring-Gai	4805735		
Gordon Railway Station Group	St John's Avenue	Gordon	Ku-Ring-Gai	4801001	Y	01150
Gosford (Brisbane Water) Railway Underbridge and Piers	Near Dane Drive	Gosford	Central Coast	4803389		
Gosford (Etna Street) Railway Overbridge	Etna Street	Gosford	Central Coast	4803386		
Gosford Railway Clock, Steam Locomotive Facilities & Signal Box	Showground Rd	Gosford	Central Coast	4800002		
Goulburn Railway Precinct	Sloane Street	Goulburn	Goulburn Mulwaree	4806291		01152
Grafton City Railway Precinct	Bent Street	South Grafton	Clarence Valley	4806791	Y	01154
Granville (Woodville Road) Underbridge	Woodville Road	Granville	Parramatta	4801833		
Granville Archaeological Site of Original 1855 Parramatta Railway Station & Yard	End of Mort Street	Granville	Parramatta	4800107		
Granville Marsh Brothers Tannery Archaeological Site	Junction of main western line & Carlingford branch line	Granville	Parramatta	4807650		
Granville Railway Station Group	Bridge Street	Granville	Parramatta	4801019		
Greta Railway Station Group	Nelson Street	Greta	Cessnock	4801180		01156
Griffith Railway Precinct	Railway Street	Griffith	Griffith	4806294		
Guildford Railway Station	Military Rd	Guildford	Cumberland	4801065		
Gunnedah Railway Station	Tempest Street	Gunnedah	Gunnedah	4801179	Y	01160
Gunning Railway Precinct	Grovenor Street	Gunning	Upper Lachlan	4806268		01162
Gymea Railway Station Group	Gymea Bay Road	Gymea	Sutherland	4801913		
H V Evatt Memorial Reserve, including memorial plaque, rockery garden, and row of trees		Kogarah	Georges River	5067561		
Hamilton Railway Depot and Triangle	Hudson Street	Hamilton	Newcastle	4803379		

ITEM NAME	LOCATION	SUBURB	LGA	SHI #	CMP	SHR
Hamilton Railway Station Group	Beaumont Street	Hamilton	Newcastle	4801020	Y	01164
Harden Railway Precinct	Station Street	Harden	Hilltops Council	4806270		01165
Hawkesbury River Rail Bridge and Long Island Group	Hawkesbury River	Long Island	Central Coast / Hornsby	4800130	Y	01040
Hawkesbury River Railway Station Group	Brooklyn Rd	Brooklyn	Hornsby	4801021	Y	01166
Hazelbrook Railway Station Group	Great Western Highway	Hazelbrook	Blue Mountains	4801914		
Helensburgh Railway Station Group	Tunnel Road (North Of)	Helensburgh	Wollongong City	4801137		01168
Henty Railway Precinct	Railway Parade	Henty	Greater Hume	4806285		01169
Hexham Railway Station		Hexham	Newcastle	5067596		
Hilltop Platform Remains	Rosina Street	Hilltop	Wingecarribee	4805749		
Homebush (Parramatta Road) Railway Underbridge	Parramatta Rd	Homebush	Strathfield	4800290	Y	
Homebush Railway Station Group	The Crescent	Homebush	Strathfield	4801087	Y	01170
Hornsby Railway Station Group and Barracks	Bridge Road	Hornsby	Hornsby	4801889		
Hurlstone Park (Foord Ave - M24+m25) Underbridge	Railway location, Bankstown Line 9.084km Foord Avenue	Hurlstone Park	Canterbury-Bankstown	4805737		
Hurlstone Park Railway Station Group	Floss Street	Hurlstone Park	Canterbury-Bankstown	4802051		
Hurstville Railway Substation	Forest Road	Hurstville	Georges River	4805727		
Ingleburn Railway Station Group	Stanley Rd	Ingleburn	Campbelltown	4801088		
Ivanhoe Railway Precinct	Cobb Highway	Ivanhoe	Central Darling	4806794		
Jannali Railway Station (Platform 2), Overbridge (Mitchell Ave) and Tree Plantings	Railway Cresent	Jannali	Sutherland	5066666		
Junee Railway Precinct	Main Street	Junee	Junee	4806760	Y	01172 (movable) 01173 (station)
Katoomba Railway Station and Yard Group	Buthurst Rd	Katoomba	Blue Mountains	4801008		01174
Kembla Grange Railway Station		Kembla Grange	Wollongong City	5067555		
Kempsey Railway Station	Kemp St	Kempsey	Kempsey	4801188		
Kendall Railway Station	Combyne St	Kendall	Port Macquarie-Hastings	4801194		
Kiama (Terralong St) Underbridge	Terralong St	Kiama	Kiama	4800158		
Kiama Railway Station Group and Turntable	Railway Parade	Kiama	Kiama	4801141	Y	01176

ITEM NAME	LOCATION	SUBURB	LGA	SHI #	CMP	SHR
Killara Railway Station Group	Werona Av	Killara	Ku-Ring-Gai	4801066		
Kings Cross Railway Station Group	Victoria Street	Potts Point	Sydney	5062515		
Kingsgrove Railway Station Group	Kingsgrove Road	Kingsgrove	Bayside	4801112		
Kogarah Fry's Reserve	Warialda Street (East Of)	Kogarah	Bayside	4804463		
Kotara (Tickhole) Railway Tunnel	Charlestown Road	Kotara	Newcastle	4800231		
Kyogle Railway Station	Etrick Street	Kyogle	Kyogle	4801224		
Lakemba Railway Station Group	The Boulevarde	Lakemba	Canterbury-Bankstown	4801916		
Lapstone (Knapsack Gully) Underbridge	Great Western Highway	Glenbrook	Blue Mountains	4803225		
Lavender Bay Railway Group	Dumbarton Street	Lavender Bay	North Sydney	4801022		01949 Partial
Lawson Footbridge	East of Station At 94.93 Km, Old Overbridge	Lawson	Penrith	4801682		
Lawson Railway Culvert (Ln067)	30m west of Ferguson Ave	Lawson	Blue Mountains	4807646		
Lawson Railway Culvert (Ln070)	Near Fredrica & Bass Streets	Lawson	Blue Mountains	4807647		
Lawson Railway Culvert (Ln075)	Opposite Charles Steet	Lawson	Blue Mountains	4807648		
Lawson Railway Station, Residence and Yard Group	Great Western Highway	Lawson	Blue Mountains	4801023	Y	01177
Leeton Railway Precinct	Railway Avenue	Leeton	Leeton	4806292		01178
Leichhardt (Charles St) Underbridge	Dulwich Hill to Rozelle Goods Line 12.405km Charles St	Leichhardt	Inner West	4805738		
Leichhardt (Marion St) Underbridge	Dulwich Hill to Rozelle Goods Line 11.127km Marion St	Leichhardt	Inner West	4805739		
Leightonfield Railway Station Group	Christina Road	Leightonfield	Canterbury-Bankstown	4801113		
Leura Railway Station Group	Leura Mall	Leura	Blue Mountains	4801024		
Lewisham (Long Cove Creek) Underbridge	Smith Street	Lewisham	Inner West	4801584	Y	01043
Lewisham (Old Canterbury Rd) Underbridge	Railway Location, Main Suburban Line 6.377km Old Canterbury Rd	Lewisham	Inner West	4801518		
Lewisham (Parramatta Road) Underbridge	Dulwich Hill to Rozelle Goods Line 10.489 kms Parramatta Road	Lewisham	Inner West	4801580		
Lewisham Railway Substation	Alfred Street	Lewisham	Inner West	4803260	Y	
Lidcombe Railway Station Group	Railway St, Olympic Dr	Lidcombe	Cumberland	4800244		

ITEM NAME	LOCATION	SUBURB	LGA	SHI #	CMP	SHR
Lilyfield (Catherine St) Overbridge	Catherine Street	Lilyfield	Inner West	4800245		
Lilyvale Railway Tunnels (1888 & 1915)	Lady Wakehurst Drive (West Of)	Lilyvale	Wollongong City	4801149		01179
Linden Railway Station Group	Great Western Highway	Linden	Blue Mountains	4801918	Y	
Lindfield Railway Station Group	Pacific Hwy	Lindfield	Ku-Ring-Gai	4800184		
Lithgow (James St) Underbridge	Railway location, Main West Line 156.334km James St	Lithgow	Lithgow	4801535		01831
Lithgow Coal Stage Signal Box	Gas Works Ln	Lithgow	Lithgow	4800108	Y	01832
Lithgow Railway Station Group and Residence	Railway Parade	Lithgow	Lithgow	4801025		01833
Liverpool Railway Station and Goods Shed	Bigge St	Liverpool	Liverpool	4801090		01181
Liverpool Railway Viaduct	Shepherd Street	Liverpool	Liverpool	4803255		
Loftus Junction Signal Box	Loftus Ave/Nattai St Intersection	Loftus	Sutherland	4800162		01182
Macdonaldtown (Burren Street) Railway Underbridge, Subway And Ticket Office	Burren Street	Macdonaldtown	Sydney	4803201		
Macksville Railway Station	Station Street	Macksville	Nambucca	4801190		01184
Macquarie Fields (Bunbury Curran Ck No2) Underbridge	Liverpool to Campbelltown 43.508km Railway Parade	Macquarie Fields	Campbelltown	4805742		
Maitland Railway Precinct	Railway Street	Maitland	Maitland	4806012		01185
Marrickville (Meek's Road) Railway Substation	Meek's Rd/ Way Street	Marrickville	Inner West	4801123		
Marrickville Railway Station Group	Illawarra Rd	Marrickville	Inner West	4801091	Y	01186
Martin Place Railway Station	Martin Place	Sydney	Sydney	4801162	Y	01187
Martins Creek Railway Station	Station Street	Martins Creek	Dungog	4801206		
Marulan Railway Precinct	Thoroughfare Street	Marulan	Goulburn Mulwaree	4806257		01188
Mascot (Botany Road) Underbridge	Railway location, Botany Line 10.535km Near McBurney Avenue	Mascot	Bayside	4800248		
Mascot (O'Riordan St) Underbridge	Railway location, Botany Line 12.395km O'Riordan Street	Mascot	Bayside	4801830		
Mascot (Robey Street) Underbridge	Railway location, Botany Line 10.535km Robey Street	Mascot	Bayside	4801848		
Mascot (Shea's Ck) Underbridge	Railway location, Botany Line 9.109km Airport Drive	Mascot	Bayside	4805743		
Meadowbank (Parramatta River) Underbridge	Railway location, Main North Line 17.500km Bowden Street	Meadowbank	Canada Bay/ Ryde	4805744		
Medlow Bath Railway Station Group	Great Western Highway	Medlow Bath	Blue Mountains	4801011	Y	01190

Item Name	Location	Suburb	LGA	SHI #	CMP	SHR
Menangle Railway Station	Stevens Road	Menangle	Wollondilly	5066665		01191
Menindee Railway Station	Maiden Street	Menindee	Central Darling	4802022		
Merrylands Railway Station Building	Military Rd	Merrylands	Cumberland	4801921	Y	
Millthorpe Railway Station	Pym Street	Millthorpe	Blayney	3150063	Y	01193
Milsons Point (Fitzroy Street) Underbridge	Concrete Arch Over Fitzroy Street	Milsons Point	North Sydney	4801822		00781
Milsons Point (Lavender Street) Railway Underbridge	Concrete Arch Over Lavender Street	Milsons Point	North Sydney	4801823		00781
Milsons Point Railway Station	Alfred Street	Milsons Point	North Sydney	4801026		01194
Minto (Bow Bowling Ck) Underbridge	Liverpool to Campbelltown 47.162km Piggott Way	Minto	Campbelltown	4805745		
Miranda Railway Station Group	Kiora Road	Miranda	Sutherland	4801922		
Mittagong Railway Precinct	Station Street	Mittagong	Wingecaribee	4801288	Y	01195
Moree Railway Station	Morton Street	Moree	Moree Plains	4801208	Y	
Morisset Railway Station Group and Residences	Dora Street	Morisset	Lake Macquarie	4801056		
Mortdale Railway Station Group	Pitt Street	Mortdale	Georges River	4801115		
Mortuary Railway Station and Gardens	Regent Street	Chippendale	Sydney	4803219	Y	00157
Moss Vale Railway Precinct	Lackey Street	Moss Vale	Wingecaribee	4806253	Y	01200
Mount Ku-ring-gai Railway Station Group	Pacific Highway	Mount Kuring-gai	Hornsby	4801923		
Mount Victoria Railway Station Group	Station Street	Mount Victoria	Blue Mountains	4801007		01203
Mulgrave Railway Residence	122 Mulgrave Road	Mulgrave	Hawkesbury	4801027		
Murrurundi Railway Station	Victoria Street	Murrurundi	Upper Hunter	4801192		01205
Museum Railway Station	3 Elizabeth Street	Sydney	Sydney	4801092	Y	01207
Muswellbrook Railway Precinct	Market Street	Muswellbrook	Muswellbrook	4806182		01208
Nambucca Heads Railway Station	Foxs Road	Nambucca Heads	Nambucca	4805725		
Narrabri Railway Station	Bowen Street	Narrabri	Narrabri	4801198		
Narrandera Railway Precinct	Whitton St (Newell Highway)	Narrandera	Narrandera	4806262	Y	01209
Narwee Railway Station Group	Hannans Road	Narwee	Canterbury-Bankstown	4801924		
Newnes Junction Signal Box	Newne's Junction	Newne's Junction	Lithgow	4807638		
Newtown Pedestrian Railway Subway	Between Trafalgar & Bedford Street	Newtown	Inner West	4800225		

Item Name	Location	Suburb	LGA	SHI #	CMP	SHR
Newtown Railway Station Group and Former Tram Depot	King Street	Newtown	Sydney	4801093	Y	01213
North Strathfield Railway Station Group	Queen Street	North Strathfield	Canada Bay	4801029		
North Sydney (Arthur Street) Railway Underbridge	Concrete Arch Over Arthur Street, North Sydney	North Sydney	North Sydney	4801824		00781
North Sydney (Bank Street) Railway Tunnel Portals	Near Bank Street	North Sydney	North Sydney	4807654		
Oakey Park (Ida Falls Creek) Railway Culvert	Off Bell Road	Oakey Park	Lithgow	5062533		00542
Oatley Railway Station Group	Mulga Road	Oatley	Georges River	4801116	Y	01214
Orange Railway Precinct	Peisley Street	Orange	Orange	4806345		01218
Otford Railway Tunnel (Former)	Chellow Dene Ave	Stanwell Park	Wollongong City	4801152		01219
Ourimbah Railway Station Group and Residence	Pacific Highway	Ourimbah	Central Coast	4801030		
Padstow Railway Station Group	Cahors Road	Padstow	Canterbury-Bankstown	4801925		
Panania Railway Station Group	Anderson Street	Panania	Canterbury-Bankstown	4801926		
Parkes Railway Precinct	May Street	Parkes	Parkes	4801352		01220
Parramatta Park and Old Government House (Railway line only)	O'Connell Street	Parramatta	Parramatta	4807641		00596
Parramatta Railway Station Group	Argyle Street	Parramatta	Parramatta	4801031	Y	00696
Parramatta Station To Parramatta Road Railway Line (Archaeological Site)	Station Street East	Harris Park	Parramatta	4804407		
Parramatta Station To Pitt Street Railway Line (Archaeological Site)	Argyle Street	Parramatta	Parramatta	4804408		
Paterson Railway Precinct	Railway Street	Paterson	Dungog	4806211		
Pendle Hill Railway Station Group	Joyce St	Pendle Hill	Cumberland	4800257		
Penrith Railway Station Group and Residence	Station St	Penrith	Penrith	4801032	Y	01222
Penrose Railway Station Group	Kareela Road	Penrose	Wingecaribee	4801928		
Penshurst Railway Station Group	The Strand	Penshurst	Georges River	4801117		
Petersham Railway Station Group	Terminus St	Petersham	Inner West	4801094	Y	01223
Picton Railway Precinct	Station Street	Picton	Wollondilly	4806271	Y	01224
Punchbowl Railway Station Group	Punchbowl Road	Punchbowl	Canterbury-Bankstown	4802009		
Pymble Railway Station Group	Grandview Street	Pymble	Ku-Ring-Gai	4801068		

Item Name	Location	Suburb	LGA	SHI #	CMP	SHR
Pyrmont Railway Cuttings, Tunnel & Weighbridge	Quarry Master Drive/Harris Street	Pyrmont	Sydney	4801122		01225
Queanbeyan Railway Precinct	Henderson Road	Queanbeyan	Queanbeyan-Palerang	4806293		01226
Quirindi Railway Station	Station St	Quirindi	Liverpool Plains	4801174		01227
Redfern Railway Station Group	Lawson Street	Redfern	Sydney	4801095	Y	01234
Regents Park Railway Station Group	Park Rd	Regents Park	Cumberland	4802060		
Revesby Railway Station Group	Blamey Street	Revesby	Canterbury-Bankstown	4801929		
Rhodes Railway Station Building	Blaxland Road	Rhodes	Canada Bay	4801033		01235
Richmond Railway Station Group	East Market Street	Richmond	Hawkesbury	4801005		01236
Riverstone Railway Station Group and Residence	Riverstone Parade	Riverstone	Blacktown	4801009		01237
Riverwood Railway Station Group	Phillip Street	Riverwood	Canterbury-Bankstown	4801930		
Rockdale Railway Station Group	Railway Street	Rockdale	Bayside	4801159		01238
Rooty Hill Railway Station Group	North Parade	Rooty Hill	Blacktown	4801932		
Rosehill Railway Station Footbridge	At Station	Rosehill	Parramatta	4801762		
Roseville Railway Station Group	Hill Street	Roseville	Ku-Ring-Gai	4801933		
Rydal Railway Station	Bathurst St	Rydal	Lithgow	4801331		01239
Scarborough Railway Station Group	First Street	Scarborough	Wollongong City	4801143		01241
Scone Railway Precinct	Susan Street	Scone	Upper Hunter	4806173	Y	01242
Sefton Junction Former Substation	Sefton Triangle, Wellington Road	Sefton	Canterbury-Bankstown	4800262		
Sefton Railway Station Group	Wellington Rd	Sefton	Canterbury-Bankstown	4801934		
Seven Hills Flyover	Main West corridor Between Seven Hills and Blacktown Stations	Seven Hills	Blacktown	4800175		
Seven Hills Railway Station Group	The Hills Crescent	Seven Hills	Blacktown	4801034		
Singleton Railway Precinct	Munro Lane	Singleton	Singleton	4806212	Y	01246
Springwood Railway Station Group	Station Rd	Springwood	Blue Mountains	4801035		01247
St James Railway Station	108 Elizabeth Street	Sydney	Sydney	4801096		01248
St Marys Railway Station Group	Queen St	St Marys	Penrith	4801036		01249
St Peters Railway Station Group	Princes Highway	St Peters	Inner West	4801153		01250

Item Name	Location	Suburb	LGA	SHI #	CMP	SHR
Stanmore (Liberty St) Underbridge	Liberty Street	Stanmore	Inner West	4803202		
Stanmore Railway Station Group	Trafalgar St	Stanmore	Inner West	4801097		01251
Stanwell Park (Stanwell Creek) Underbridge	Illawarra Line 56.727km Off Railway Cr, 0.75Km Past Station	Stanwell Park	Wollongong City	4801164	Y	01054
Strathfield Railway Station Group	Strathfield Sq, Albert Rd	Strathfield	Strathfield	4801098		01252
Strathfield Railway Triangle	Leicester Av	Strathfield	Strathfield	4801129		01252
Stuart Town Railway Station	Railway Street	Stuart Town	Dubbo	4801354		01253
Summer Hill Railway Station Group	Carlton Cr	Summer Hill	Inner West	4801099		
Sutherland (Rawson Ave) Underbridge	Railway location, Cronulla Line 24.967km Rawson Avenue	Sutherland	Sutherland	4801846		
Sutherland Railway Station Group	East Parade	Sutherland	Sutherland	4801165		
Sutherland Railway Substation	1 Rawson Avenue	Sutherland	Sutherland	4804459		
Sydenham (Illawarra Line) Underbridge	Railway location, Botany Line 15.360km Marrickville Road	Sydenham	Inner West	4805746		
Sydenham Railway Station Group	Gleeson Avenue	Sydenham	Inner West	4801154		01254
Sydney Harbour (Balmain to Greenwich) Railway Electricity Tunnel	Under Sydney Harbour	Birchgrove	Inner West	5062542		01231
Sydney Harbour Bridge (Rail Property Only)	Arthur and Argyle Sts	Sydney	Sydney	4801059		00781
Sydney Royal Botanic Garden and Domain (Railway Line)	Farm Cove	Sydney	Sydney	4807640		01070
Tahmoor Railway Station	George Street	Tahmoor	Wollondilly	4801297		01258
Tallong Railway Precinct and Water Supply Facilities	Railway Parade	Tallong	Goulburn Mulwaree	4806793		01259
Tamworth Railway Station	Marius Street	Tamworth	Tamworth Regional	4801183		01260
Tarago Railway Precinct	Bungendore Road	Tarago	Goulburn Mulwaree	4806298	Y	01262
Tarana Railway Precinct	Tarana Road	Tarana	Lithgow	4806792	Y	01263
Taree Railway Precinct	Olympia Street	Taree	Mid-Coast	4806196		01264
Tempe House & St Magdalene's Chapel (Railway Land Only)	1 Princes Highway	Arncliffe	Bayside	5062534	Y	01266
Tempe Railway Station Group	Griffiths Street	Tempe	Inner West	4801155	Y	01266
Tenterfield Railway Precinct	Railway Avenue	Tenterfield	Tenterfield	4801213	Y	01267
Teralba Railway Residence	148 Railway Street	Teralba	Lake Macquarie	4803380	Y	
The Rock Railway Precinct	Railway Street	The Rock	Lockhart	4806256		01268

ITEM NAME	LOCATION	SUBURB	LGA	SHI #	CMP	SHR
The Rocks (Argyle Street) Railway Substation and Switchhouse	Trinity Avenue	Dawes Point	Sydney	4800006	Y	00781
The Rocks (Argyle Street) Railway Underbridge	Concrete Arch Over Argyle Street	Sydney	Sydney	4801821		00781
Thirlmere Railway Precinct and Rail Heritage Centre	Station Street	Thirlmere	Wollondilly	4801299		
Thirroul Railway Crew Barracks & Former Depot Archaeological Site	Church Street	Thirroul	Wollongong City	4804461		
Thirroul Railway Station Group	Railway Parade	Thirroul	Wollongong City	4801144		01269
Thornton Railway Station	Karuah Street	Thornton	Maitland	4801938		
Toongabbie Railway Station Group, Underbridge and Archaeological Remains	Portico Pde	Toongabbie	Cumberland	4800268		
Town Hall Railway Station	George Street	Sydney	Sydney	4802010		
Turramurra Railway Station Group	Rohini Street	Turramurra	Ku-Ring-Gai	4801070		
Turrella Railway Station Group	Reede Street	Turrella	Bayside	4801890		
Ultimo (Railway Square) Railway Overbridge	Railway Square	Sydney	Sydney	4801079		01232
Ultimo (Ultimo Road) Underbridge	Darling Harbour Goods Line Over Ultimo Road	Ultimo	Sydney	4801501		01062
Unanderra Station Masters Residence	111 Princes Highway - Rear Of	Unanderra	Wollongong City	4801939		
Uralla Railway Station	Duke St	Uralla	Uralla	4801214		01275
Valley Heights Railway Station Group and Locomotive Depot	Tusculum Road	Valley Heights	Blue Mountains	4801037	Y	01276
Victoria Street Railway Station	Waller Street/ Victoria Street	East Maitland	Maitland	4801004		01277
Villawood Railway Station Group	Villawood Place, River Ave	Villawood	Fairfield	4801071		
Wagga Wagga Railway Precinct	Station Place	Wagga Wagga	Wagga Wagga	4806250		01279
Wahroonga Railway Station Group	Redleaf Avenue	Wahroonga	Ku-Ring-Gai	4801002		01280
Waitara Railway Station Group	Alexandria Parade	Waitara	Hornsby	4802058		
Walcha Road Railway Station	Wollon Woolbrook Road	Walcha Road	Walcha	4801181		01281
Warnervale (Wallarah Creek) Underbridge	Railway location, Main North Line 110.32km Hiawatha Road	Warnervale	Central Coast	4801831		
Warrawee Railway Station Group	Heydon Avenue	Warrawee	Ku-Ring-Gai	4802042		
Warrimoo Railway Station Group	Great Western Highway	Warrimoo	Blue Mountains	4801944		
Warwick Farm Railway Station Group	Remembrance Ave	Warwick Farm	Liverpool	4801945		

ITEM NAME	LOCATION	SUBURB	LGA	SHI #	CMP	SHR
Zig Zag Ten Tunnel Railway Deviation & Reserve	Clarence Station To Zig Zag Bottom Points & rail corridor to Bells Rd/ Brewery Lane	Bell	Lithgow	4800183	Y	01037 00542

ITEM NAME	LOCATION	SUBURB	LGA	SHI #	CMP	SHR
Waterfall Turntable, Watering Facilities & Movable Items	McKell Avenue (North Of)	Waterfall	Sutherland	4801139		
Waverton (Euroka Street) Underbridge	Euroka Street	Waverton	North Sydney	4801825		
Waverton Railway Station Building	Bay Rd	Waverton	North Sydney	4801038		01284
Wellington Railway Precinct	Swift Street	Wellington	Dubbo	4806355		
Wentworth Falls Railway Culvert (Wf036)	Near Junction of Station Street & Blaxland Rd	Wentworth Falls	Blue Mountains	4807653		
Wentworth Falls Railway Station Group	Station Street	Wentworth Falls	Blue Mountains	4801039		
Wentworthville Railway Station Group	The Kingsway	Wentworthville	Cumberland	4801040		
Werris Creek Railway Precinct	Single Street	Werris Creek	Liverpool Plains	4806177	Y	01285
Wiley Park Railway Station Group	King Georges Road	Wiley Park	Canterbury-Bankstown	4801946		
Willow Tree Railway Station	Borambil Creek Road	Willow Tree	Liverpool Plains	4805726		
Windsor Railway Station Group and Former Goods Yard	George Street	Windsor	Hawkesbury	4801003	Y	01287
Wingello Railway Station Group	Railway Parade	Wingello	Wingecarribee	4801251		01288
Wollongong Railway Station Group	Station Street	Wollongong	Wollongong City	4801145		01289
Wollstonecraft (Russell St) Underbridge	Russell Street	Wollstonecraft	North Sydney	4801061		
Wollstonecraft Railway Station Sign	Shirley Road	Wollstonecraft	North Sydney	4800121		
Wondabyne Railway Station	Mullet Creek	Wondabyne	Central Coast	5063079	Y	
Woodford (Cox's Rd) Archaeological Site	Great Western Highway	Woodford	Blue Mountains	5063078		01955
Woodford Railway Station Group	Great Western Highway	Woodford	Blue Mountains	4801041		
Woolloomooloo Viaduct - Underbridge	Sir John Young Crescent	Woolloomooloo	Sydney	4801835	Y	
Wooloware Railway Station Group	Swan Street	Wooloware	Sutherland	4801947		
Woy Woy Railway Tunnel	Woy Woy Rd	Woy Woy	Central Coast	4800112		01835
Wynyard Former Tram Tunnels	Cumberland Street	Wynyard	Sydney	4800281		
Wynyard Railway Station	York Street	Sydney	Sydney	4803268	Y	01271
Wyong (Tacoma Rd) Railway Underbridge	Adjacent to Pacific Hwy (btw Tacoma Rd & Panonia Rd)	Wyong	Central Coast	5062532		
Wyong Railway Station Group	Pacific Hwy	Wyong	Central Coast	4801081		
Yass Junction Railway Precinct	Faulder Avenue	Yass Junction	Yass Valley	4806252	Y	01291
Yennora Railway Station Group	Railway Street	Yennora	Cumberland	4800282		

© Transport for New South Wales

Copyright: The concepts and information contained in this document are the property of Transport for NSW. Use or copying of this document in whole or in part without the written permission of Transport for NSW constitutes an infringement of copyright.