



# McCaffrey Drive closure and traffic switch on Lookout Road from Friday 16 May

## Newcastle Inner City Bypass – Rankin Park to Jesmond

May 2025



Australian Government

BUILDING AUSTRALIA



Transport for NSW acknowledges the Awabakal people of the Awabakal Nation as the Traditional Custodians of the lands on which we work and pays respect to Elders past and present.

### The Australian and NSW governments are investing in the Rankin Park to Jesmond section of the Newcastle Inner City Bypass.

Work is continuing on the 3.4 kilometre section of the bypass. Transport for NSW has engaged Fulton Hogan to finalise the design and construct this section of the bypass.

#### What work are we doing?

As part of construction of the southern section of the Newcastle Inner City Bypass, which includes Bridge 1 and the Southern Interchange, the project team are realigning and reconstructing sections of Lookout Road and McCaffrey Drive.

This requires excavation of the existing road surface and adding fill to build up road levels, with differences of between one (1) and four (4) metres. Work will also include installing new pavement and asphaltting, stormwater drainage installation, utility relocation, fencing, lighting, construction of new shared user paths and traffic controls for the new Southern Interchange.

When the intersection reopens, traffic will travel over the new structure and move closer to the new alignment.

#### When and where we'll be working

Work will be carried out from 7pm Friday 16 May, and the road will reopen on to the new alignment and shifted intersection from 5am Monday 19 May, weather permitting.

During work over the weekend, McCaffrey Drive will be closed to traffic and pedestrians between Lookout Road and Marshall Street.

#### What will this mean for you?

As part of this work there will be changed traffic conditions on Lookout Road and McCaffrey Drive which will impact capacity and road conditions.

Changes include temporary traffic lane realignment and modification of the intersection including closure of slip lanes on McCaffrey Drive and Lookout Road, as well as the closure of one southbound right turn lane from Lookout Road into McCaffrey Drive.

Lookout Road will be further reduced to one lane both northbound and southbound.

McCaffrey Drive will be closed between Marshall Street and Lookout Road, weather permitting.

Detours of up to five kilometres will be in place during the closure, which may add up to 15 minutes to your journey. Bus stops west of Marshall Street will be closed, and the bus stop opposite Elbrook Drive will be relocated west.

For the safety of all users the footpath on McCaffrey Drive will be closed as part of the full weekend closure.

Footpath access will be maintained on the eastern side of Lookout Road.

Noise levels will be moderate and there will be some changes to property access. Directly affected residents will be contacted and advised of the likely impact and what we are doing to minimise disruption during the work.



The community is encouraged to take alternative travel options via Lake Road, Main Road, Macquarie Road and Hillsborough Road, when suitable, to reduce the wider network impacts.

## Changes to intersection

From Monday 16 May, weather permitting, motorists will start travelling over the new bridge structure and be switched to the new signalised intersection at Lookout Road and McCaffrey Drive.

There will be some changes to traffic movements. Those on McCaffrey Drive connecting to Lookout Road to travel north, and vice versa, will now continue straight at the signals. Those on McCaffrey Drive turning right on to Lookout Road to travel south, will temporarily use what will be the final northbound off ramp.

There will be further changes in the area, with the switch in place until the bypass is open to traffic.

These changes are shown on the map on the following page, or take a look at our fly-through videos on the design map at [caportal.com.au/tfns/rankin-park-to-iesmond](http://caportal.com.au/tfns/rankin-park-to-iesmond).

Pedestrian and cyclist access on the east side of

Lookout Road remains in place. There will be a new pedestrian and cyclist access on the south side of McCaffrey Road.

The bus stop on the Western Side of Lookout Road between Kookaburra Circuit and McCaffrey Drive will be relocated towards the hospital.

## Managing our impacts

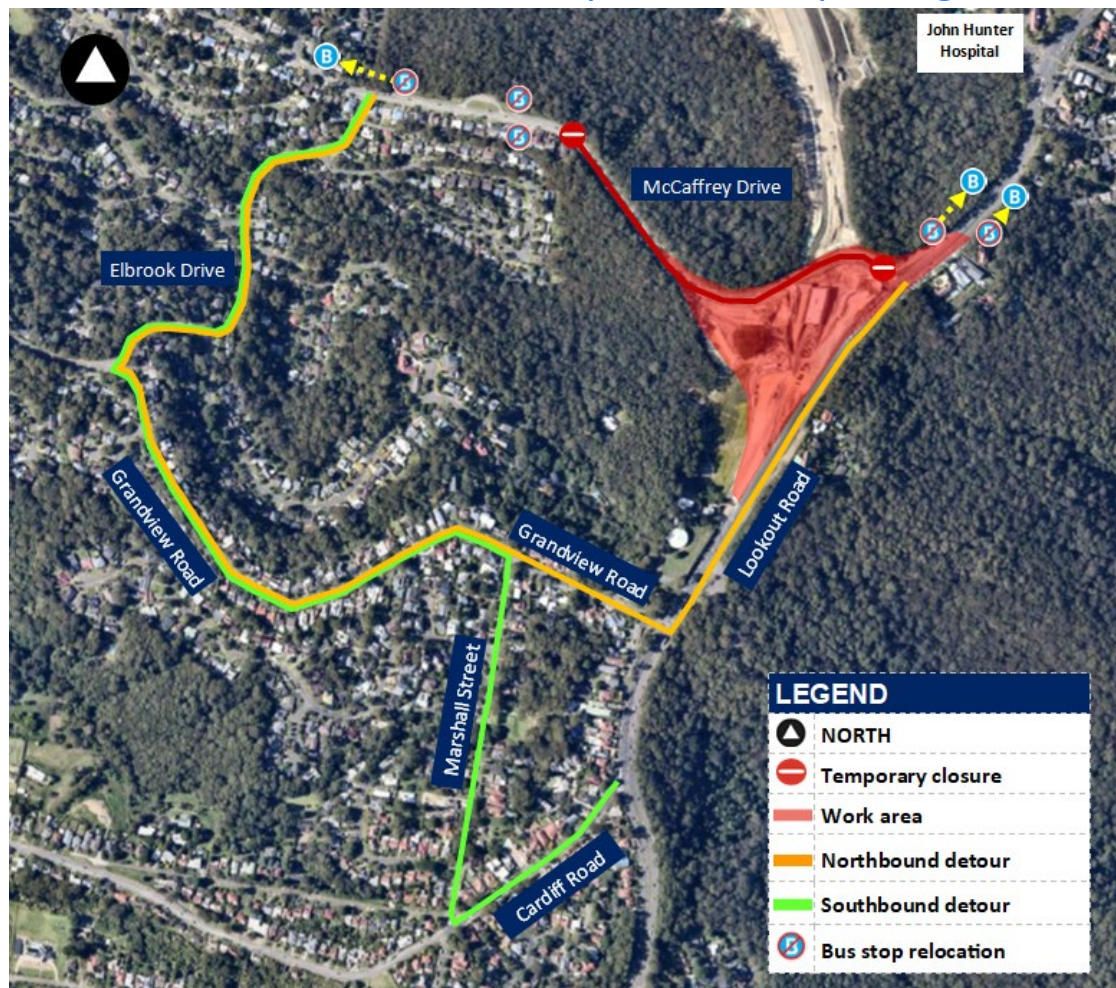
There will be machinery and other plant and equipment working in different areas around the area as we continue to work on the project, which will generate light, noise, and vibration.

Where possible, we will minimise impacts by:

- turning off machinery and vehicles when not in use
- using non-tonal reversing alarms
- positioning of machines and directing temporary lighting down and away from homes
- planning activities close to residents within standard construction hours and scheduling noisy activities earlier in the night
- monitoring noise to manage any potential impacts and adjusting our work.

Thank you for your patience during this important work.

## Location of work area - detour map and bus stop changes



This is an artist impression only and is not to scale.



New traffic movements and ongoing location of work area



This is an artist impression only and is not to scale.



## New bus stop location on Lookout Road



This is an artist impression only and is not to scale.

## Contact us



If you would like to provide feedback, or have any questions or complaints, please contact our 24-hour Construction Response Line  
**1800 818 433**



**RP2JCommunity@fultonhogan.com.au**



**nswroads.work/rp2j**



**For the latest traffic updates:**

Call 132 701, visit [livetraffic.com](http://livetraffic.com) or download the app Live Traffic NSW



**Scan the QR code to visit the online portal**



### Interpreter service

For languages other than English call 131 450  
Arabic • Greek • Hindi • Mandarin • Vietnamese

لطلب خدمة الترجمة الشفهية للغات غير الإنجليزية اتصل  
بالرقم **131 450**

Για υπηρεσίες διερμηνείας σε άλλες γλώσσες εκτός από  
τα Αγγλικά καλέστε το **131 450**

अंग्रेज़ी के अतिरिक्त अन्य भाषाओं के लिए दुभाषिया सेवा  
**131 450** पर कॉल करें

获取英语以外的其他语言口译协助服务可以致电**131 450**

Để có dịch vụ thông ngôn cho các ngôn ngữ khác tiếng  
Anh, gọi số **131 450**

[www.transport.nsw.gov.au/privacy-statement#Your\\_Privacy](http://www.transport.nsw.gov.au/privacy-statement#Your_Privacy)