

# Major traffic switch from Tuesday 17 December

## Newcastle Inner City Bypass – Rankin Park to Jesmond

December 2024



Transport for NSW acknowledges the Awabakal people of the Awabakal Nation as the Traditional Custodians of the lands on which we work and pays respect to Elders past and present.

### The Australian and NSW governments are investing in the Rankin Park to Jesmond section of the Newcastle Inner City Bypass.

Work is continuing on the 3.4 kilometre section of the bypass. Transport for NSW has engaged Fulton Hogan to finalise the design and construct this section of the bypass.

#### What work are we doing?

As part of construction of the Newcastle Inner City Bypass, the project team are realigning all lanes on Newcastle Road to travel under the bridge. The Jesmond roundabout will no longer be in operation.

#### When and where we'll be working

Works to realign lanes on Newcastle Road will commence from mid-December this will include asphaltting and line marking.

Standard working hours are from **7am to 6pm, Monday to Friday**, and **Saturday 8am to 5pm**.

Nightworks are from **Sunday to Thursday, between 6pm and 7am**.

#### What will this mean for you?

From **17 December 2024**, all traffic will switch to travel under the Jesmond bridge (see map).

Traffic travelling west towards Jesmond will travel through the first span of the bridge, traffic

travelling eastbound towards the city will continue to go through the second span.

Those travelling north from Newcastle Road will temporarily travel through the second span of the bridge and turn right onto the Inner City Bypass, in the coming months traffic will realign under the third span of the bridge.

Pedestrians and cyclists that travel on the shared user path through Jesmond Park, will realign to use the path under the first span of the bridge.

During the implementation of the switch we need to temporarily close the northbound lanes for **up to three nights from Sunday 15 December between 7pm and 5am**, weather permitting.

Detours of up to 2.5 kilometres will be in place during this time. Westbound motorists travelling north from the Jesmond roundabout will detour further west to u-turn at the Thomas Street roundabout, Wallsend. Eastbound motorists will detour north via the slip lane at the Newcastle Inner City Bypass to a u-turn at the University Drive roundabout.

The detour may add up to 10 minutes to your journey. We have included a map to show the detours. Access will be maintained for east and westbound motorists during the work.

#### Managing our impacts

There will be machinery and other plant and equipment working in different areas throughout



the night work. The machinery and equipment generate light, noise, and vibration. We will make every effort to minimise these impacts by:

- Turning off machinery and vehicles when not in use
- Using non-tonal reversing alarms
- Positioning of machines and directing temporary lighting down and away from homes

- Planning activities close to residents within standard construction hours and scheduling noisy activities earlier in the night, where possible
- Monitoring noise to manage any potential impacts and adjusting our work, where possible.

Noise levels will be moderate. Directly affected residents will be contacted and advised of the likely impact and what we are doing to minimise disruption during the work.

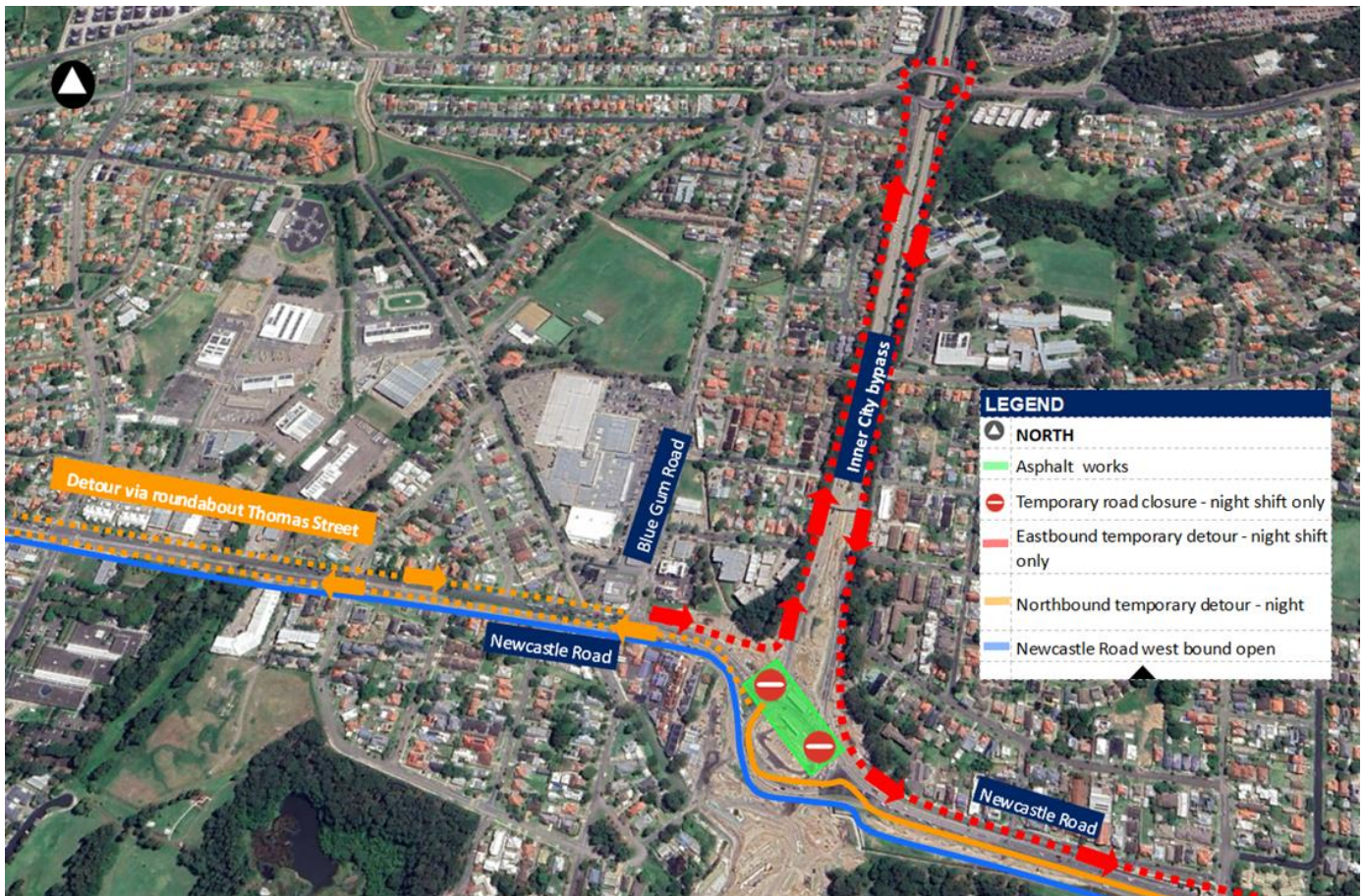
## Changes to Newcastle Road from 17 December



GPS navigation maps are not updated as regularly as construction progress, motorists are advised to follow traffic controls and directional signage around the project site.







Temporary detour during implementation of the switch

## Contact us



If you would like to provide feedback, or have any questions or complaints, please contact our 24-hour Construction Response Line  
**1800 818 433**



**RP2JCommunity@fultonhogan.com.au**



**nswroads.work/rp2j**



**For the latest traffic updates:**  
Call 132 701, visit [livetraffic.com](http://livetraffic.com) or download the app Live Traffic NSW



**Scan the QR code to visit the online portal**



### Interpreter service

For languages other than English call 131 450  
Arabic • Greek • Hindi • Mandarin • Vietnamese

لطلب خدمة الترجمة الشفهية للغات غير الإنجليزية اتصل  
بالرقم **131 450**

Για υπηρεσίες διερμηνείας σε άλλες γλώσσες εκτός από τα Αγγλικά καλέστε το **131 450**

अंग्रेज़ी के अतिरिक्त अन्य भाषाओं के लिए दुभाषिया सेवा  
**131 450** पर कॉल करें

获取英语以外的其他语言口译协助服务可以致电**131 450**

Để có dịch vụ thông ngôn cho các ngôn ngữ khác tiếng Anh, gọi số **131 450**

[www.transport.nsw.gov.au/privacy-statement#Your\\_Privacy](http://www.transport.nsw.gov.au/privacy-statement#Your_Privacy)

