



# Road widening at Jesmond Interchange in February 2025

## Newcastle Inner City Bypass – Rankin Park to Jesmond

February 2025



Transport for NSW acknowledges the Awabakal people of the Awabakal Nation as the Traditional Custodians of the lands on which we work and pays respect to Elders past and present.

The Australian and NSW governments are investing in the Rankin Park to Jesmond section of the Newcastle Inner City Bypass.

Work is continuing on the 3.4 kilometre section of the bypass. Transport for NSW has engaged Fulton Hogan to finalise the design and construct this section of the bypass.

### What work are we doing?

As part of construction of the Newcastle Inner City Bypass, the project team are widening and realigning the westbound lanes on Newcastle Road, to increase capacity of the right hand turn onto the Newcastle Inner City Bypass (towards University of Newcastle).

This will include moving barriers on the eastern edge of the westbound lane of Newcastle Road to increase the right hand turn from one to two lanes and extend the length of the lanes.

### When and where we'll be working

Work at the Jesmond Interchange has commenced. Weather has delayed the increased capacity, which will now be in place by **Wednesday 19 February 2025**, weather permitting.

To minimise the impact to motorists there will be some out of hours night shifts from **Sunday 9 February to Tuesday 18 February** between **7pm** and **5am**.

Standard working hours are from **7am to 6pm, Monday to Friday**, and **Saturday 8am to 5pm**.

Nightworks are from **Sunday to Thursday, between 6pm and 7am**.

### What will this mean for you?

To carry out the work there will be changed overnight traffic conditions including intermittent single lane closures of the westbound lane.

With an anticipated increase in vehicles on the road network over the coming weeks, motorists are advised to allow extra travel time until the additional capacity of the right hand turn has been completed.

Pedestrians and cyclists that travel on the shared user path through Jesmond Park will not be impacted.

Traffic control, electronic message boards and reduced speed limits will be in place during the work for the safety of workers and motorists.

Those travelling north from Newcastle Road will only temporarily travel through the second span of the bridge to turn right onto the Newcastle Inner City Bypass. In the coming months traffic will realign under the third span of the bridge. We will continue to keep the community updated on progress and changes to traffic movements.

### Managing our impacts

There will be machinery and other plant and equipment working in different areas throughout the night work. The machinery and equipment generate light, noise, and vibration. We will make every effort to minimise these impacts by:



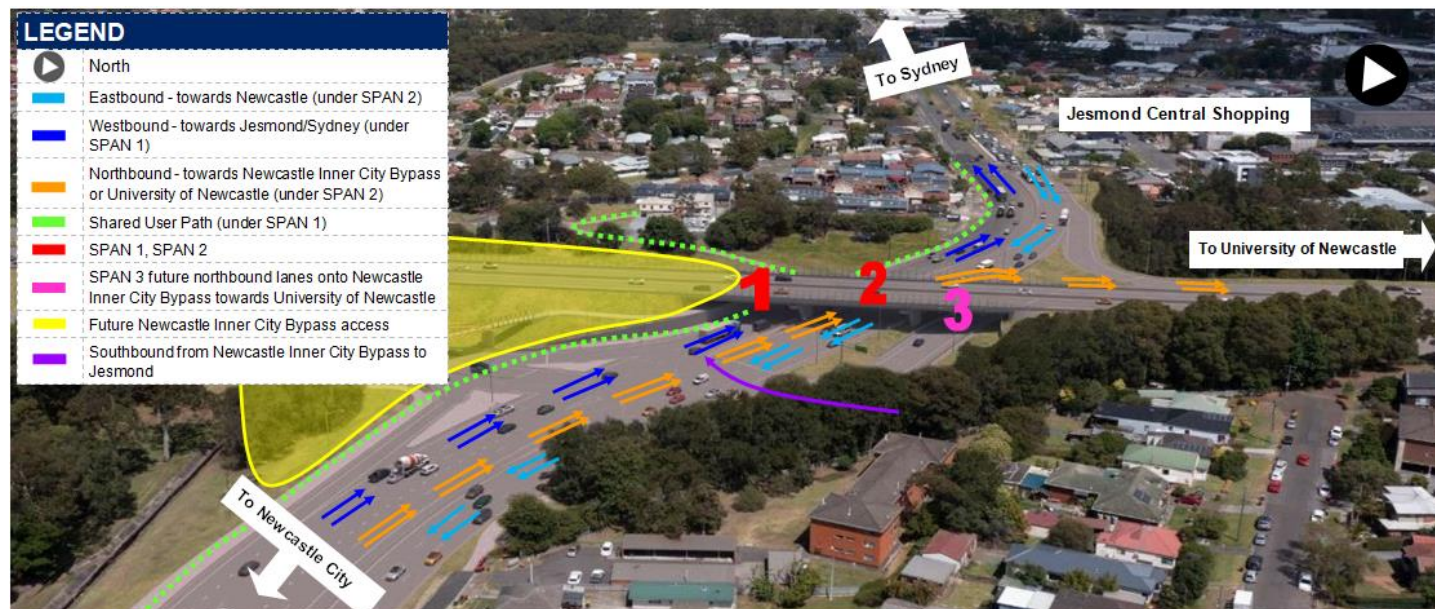
- Turning off machinery and vehicles when not in use
- Using non-tonal reversing alarms
- Positioning of machines and directing temporary lighting down and away from homes
- Planning activities close to residents within standard construction hours and scheduling

noisy activities earlier in the night, where possible

- Monitoring noise to manage any potential impacts and adjusting our work, where possible.

Noise levels will be moderate. Directly affected residents will be contacted and advised of the likely impact and what we are doing to minimise disruption during the work.

## Changes to Newcastle Road from 19 February 2025



**DARK BLUE** is the two lanes that travel westbound under SPAN 1 (towards Jesmond/Sydney)

**LIGHT BLUE** is the two lanes that travel eastbound under SPAN 2 (towards Newcastle city)

**ORANGE** is the increased capacity for right turning lanes under SPAN 2 westbound from Newcastle Road onto the Newcastle Inner City Bypass (towards University of Newcastle)

**YELLOW** is the construction area for the future access for the Newcastle Inner City Bypass on and off ramps to/from South (towards John Hunter Hospital).

**GREEN** dotted lines are delineated paths for pedestrians to move around the construction works.

GPS navigation maps are not updated as regularly as construction progress, motorists are advised to follow traffic controls and directional signage around the project site.

## Contact us



If you would like to provide feedback, or have any questions or complaints, please contact our 24-hour Construction Response Line  
**1800 818 433**



**RP2JCommunity@fultonhogan.com.au**



**[nswroads.work/rp2j](https://nswroads.work/rp2j)**



**For the latest traffic updates:**

Call 132 701, visit [livetraffic.com](https://livetraffic.com) or download the app Live Traffic NSW



**Scan the QR code to visit the online portal**



**Interpreter service**

For languages other than English call 131 450  
Arabic • Greek • Hindi • Mandarin • Vietnamese

طلب خدمة الترجمة الشفهية للغات غير الإنجليزية اتصل  
بالرقم **131 450**

Για υπηρεσίες διερμηνείας σε άλλες γλώσσες εκτός από τα Αγγλικά καλέστε το **131 450**

अंग्रेज़ी के अतिरिक्त अन्य भाषाओं के लिए दुभाषिया सेवा  
**131 450** पर कॉल करें

获取英语以外的其他语言口译协助服务可以致电**131 450**

Để có dịch vụ thông ngôn cho các ngôn ngữ khác tiếng Anh, gọi số **131 450**

[www.transport.nsw.gov.au/privacy-statement#Your\\_Privacy](https://www.transport.nsw.gov.au/privacy-statement#Your_Privacy)

