

Planned out of hours work

Newcastle Inner City Bypass – Rankin Park to Jesmond

January 2025



Transport for NSW acknowledges the Awabakal people of the Awabakal Nation as the Traditional Custodians of the lands on which we work and pays respect to Elders past and present.

The Australian and NSW governments are investing in the Rankin Park to Jesmond section of the Newcastle Inner City Bypass.

Work is continuing on the 3.4 kilometre section of the bypass. Transport for NSW has engaged Fulton Hogan to finalise the design and construct this section of the bypass.

What work are we doing?

We will be carrying out general road and bridge construction including concrete pouring of structural elements and piling. Our work at Jesmond also includes continued drainage work to install a new culvert and pipe network, utilities relocations including electrical works and permanent street lighting, road pavement construction and modifications to the traffic control systems to adjust traffic flow. We will also be carrying out traffic switches at the northern interchange at Jesmond.

When and where we'll be working

The work will occur along the length of the bypass from the southern interchange on Lookout Road and McCaffrey Drive at New Lambton Heights, to the northern interchange on Newcastle Road and Main Road, Jesmond. Additional works will occur in Jesmond Park and near the John Hunter Hospital.

Day work will be carried out **Monday to Friday between 7am and 6pm** and **Saturday from 8am to 5pm**. No work will be carried out on public holidays.

Work will be carried out in or next to live traffic lanes or require the night-time isolation of services, so out of hours is the safest way to conduct this work.

Night work will be carried out **five nights** per week, **between 6pm and 7am**.

Lanes will realign, drainage and utilities work will continue around the Jesmond northern interchange and the New Lambton Heights southern interchange at McCaffrey drive.

What will this mean for you?

During night work there will be traffic control on site, temporary lane closures and machinery operating adjacent to or in the road lanes.

These will move locations, please take care, keep to the signposted speed limits and follow the direction of traffic controllers.

We work outside standard construction hours to:

- Improve safety by minimising the interactions between road users, pedestrians and workers
- Minimise delays and journey times for motorists and businesses.

Managing our impacts

There will be machinery and other plant and equipment working in different areas throughout the night work. The machinery and equipment generate light, noise, and vibration. We will make every effort to minimise these impacts by:

- Turning off machinery and vehicles when not in use
- Using non-tonal reversing alarms
- Positioning of machines and directing temporary lighting down and away from homes
- Planning activities close to residents within standard construction hours and scheduling noisy activities earlier in the night, where possible
- Monitoring noise to manage any potential impacts and adjusting our work, where possible.

Noise levels will be moderate. Directly affected residents will be contacted and advised of the likely impact and what we are doing to minimise disruption during the work.



Details of planned out of hours work at Jesmond – Sunday 19 January to Saturday 15 February

Out of hours work activities	Equipment
<ul style="list-style-type: none">• Realigning of lanes, installation of road pavement, kerbs, gutters, medians, and footpaths, retaining walls, street furniture, road signage including structural signs• Asphalt works, including milling and paving works• Installation of bridge components and removal of temporary works, concrete pours, and formwork• Removal of existing and installing new concrete drainage, stormwater pits, stormwater pipes and box culverts, connection to stormwater lines• Geotechnical investigations, surveying work, soft soil remediation• Vegetation maintenance• Relocation of existing and installation of new utility assets, including traffic control signals, electrical (power) lines (overhead & underground), water and street lighting• Service investigation using non-destructive digging• Delivery and installation of precast structures• Trucks moving equipment between locations including deliveries of plant and materials• Lane closures near project area, traffic control set up and pack up• Installation of temporary work and support structures to facilitate and protect new installations or excavations• Commence installation of artwork on bridge structures at Jesmond northern interchange and the Rankin Park southern interchange.	<ul style="list-style-type: none">• Asphalt paver, shuttle buggy, road mill, rollers• Street sweepers, excavators, hammers, tippers, concrete trucks, rollers, compactors, graders, dozers, bobcats, posi-tracks, watercarts, dump trucks, auger and kerb machines• Trucks for line marking and removal, barrier install and removal• Hand-held compactors, carpentry tools and concrete tools• Trucks and light vehicles• Lighting towers and generators• Shoring during excavations including sheet piling, shoring boxes, and steel plates• Concrete road saws and road profilers• Pumps and dewatering equipment• Elevated work platforms, cranes, and borers• Vacuum trucks• Trucks such as rigids, watercarts and sweepers• Mobile cranes including frannas• Concrete pumps, concrete trucks, and concreting tools• Cranes being delivered, installed, and dismantled• Oversized vehicles for deliveries• Delivery of precast elements - jinker (girder)• Hydro-blasting machine.



This is an artist impression only and is not to scale.

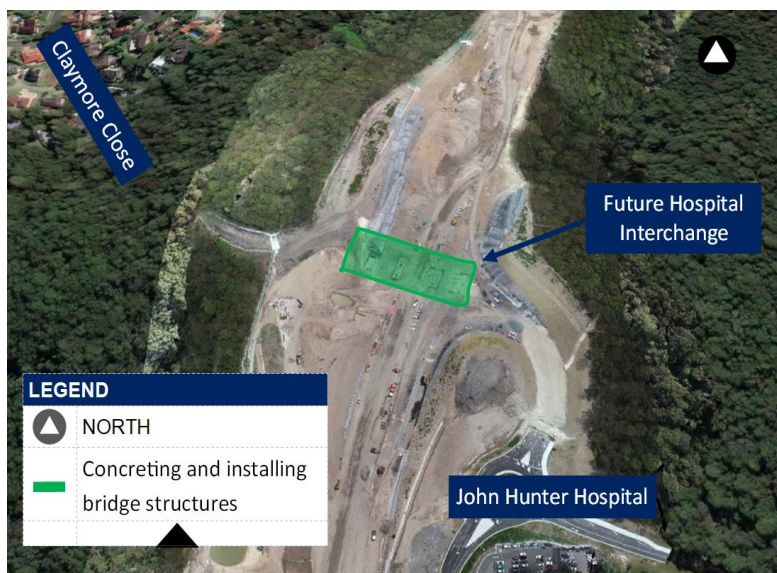
Details of planned out of hours work at New Lambton Heights – Sunday 19 January to Saturday 15 February

Out of hours work activities

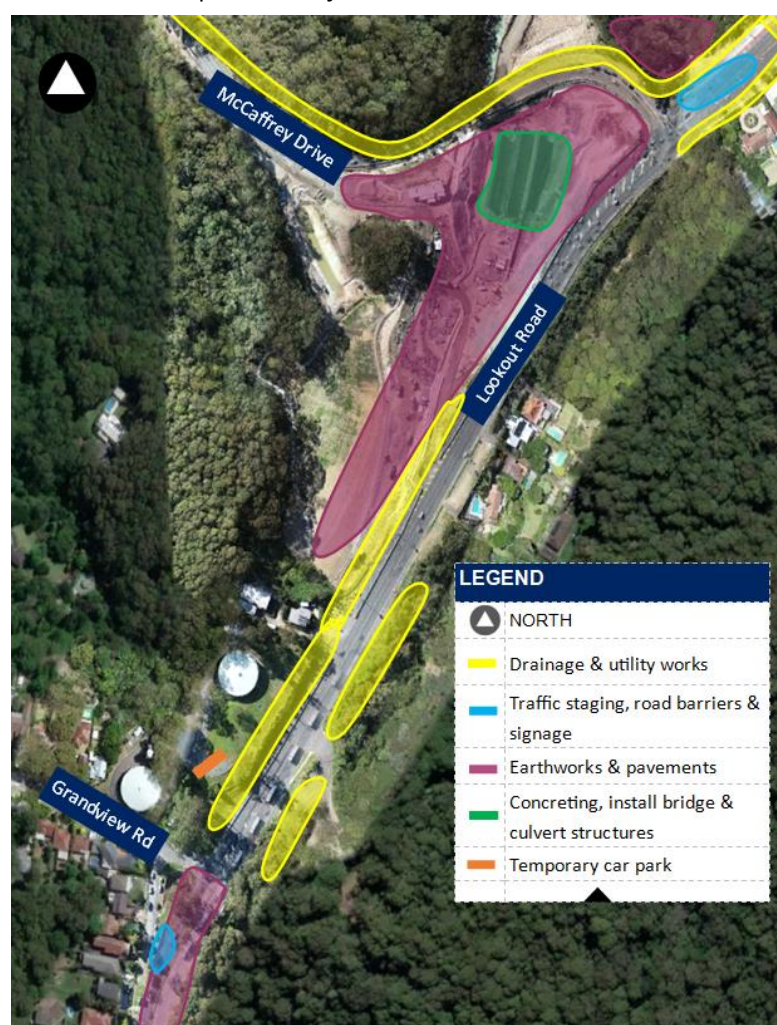
- Concrete pours and bridgeworks, and access roads for pours
- Trucks moving equipment between locations including deliveries of plant and materials
- Delivery and installation of bridge & culvert precast structures
- Realigning and installation of road pavement, kerbs, medians, and footpaths, retaining walls, road signage, pavements, street furniture etc.
- Drainage works including removing existing and installing new stormwater pits, stormwater pipes and box culverts, connection to services
- Service investigation using non-destructive digging, barrier placement including relocation and mechanical anchoring
- Street cleaning and dust suppression, when required.
- Commence installation of artwork on bridge structures at Jesmond northern interchange and the Rankin Park southern interchange.
- Relocation of existing and installation of new utility assets, including traffic control signals, electrical (power) lines (overhead & underground), water, communication lines and street lighting.

Equipment

- Mobile cranes including frannas, concrete pumps, concrete trucks, water pumps and drill rig and required earthworks plant
- Elevated work platforms, kerb machines, crane borers and concrete deliveries
- Cranes delivered, installed, used and dismantled, oversized vehicles for deliveries
- Traffic control systems modifications including set up and pack up
- Tracked and wheeled excavators
- Jackhammer, hammer drill, concrete saw, auger machines
- Trucks, including rigids, watercarts, sweeper
- Mobile cranes including frannas
- Vacuum truck for non-destructive digging
- Backhoe, bobcat, skid-steer loader, roller
- Seal and aggregate trucks, rollers
- Hydro-blasting machine
- Compaction equipment and concrete vibrators, lighting towers and pumps
- Asphalt paver, profiler, and support vehicles
- CCTV, survey, pole borer lifter and borer machine, trenchless underground boring (horizontal directional drilling rig).



This is an artist impression only and is not to scale.



This is an artist impression only and is not to scale.



For more information about the project visit nswroads.work/rp2j.

Thank you for your patience during this important work. Scan the QR code to visit our interactive portal and learn more about the project.


Planned out of hours work from January 2025 to March 2025

Day work will continue to be carried out **between 7am and 6pm from Monday to Friday**, and **Saturday between 8am and 5pm**.

Night work will be required **between 6pm and 7am, five nights** per week, weather permitting. No work will be carried out on public holidays.


Out of hours work activities - five nights per week	Equipment
<ul style="list-style-type: none">• Drainage work including removing existing and installing new stormwater pits, stormwater pipes and box culverts, connection to services at Jesmond and Rankin Park• Delivery and installation of precast structures, structural elements• Temporary lane closures, detours, lane realignments in preparation for future traffic switches on Lookout Road, McCaffrey Drive, the Inner City Bypass and Newcastle Road. This will include removal and installation of line road pavements, kerbs, footpaths, medians, retaining walls, road signage, street furniture, lighting, line marking, and asphaltting• Utility work, service investigations, removal and installation of power, street lighting, water, communication lines and traffic control signals• Fencing installation, modifications, installing site accesses, car parks, vegetation removal and clearing activities, surveying work• Hauling of material across McCaffrey Drive• Implementation of new, and relocation of existing site gates on Lookout and McCaffrey Drive• Backfilling of structures and delivery of materials south of McCaffrey Drive• Installation of artwork on bridge structures at Jesmond northern interchange and Rankin Park southern interchange• Placement of concrete for bridge deck structures.	<ul style="list-style-type: none">• Concrete works, including deliveries, concrete tools, pumping and placement• Excavators, hammers, tippers, rollers, compactors, rollers graders, dozers, bobcats, watercarts, dump trucks,• Road kerb machines, road profilers, concrete saws, asphalt pavers, profilers, sealing equipment• Traffic control, line marking truck, grinder, water blaster• Carpentry, concrete, and electric tools, chainsaws, bore hole drills• Franna cranes, elevated work platforms, vacuum excavation• Hydro-blasting machine• Survey equipment, trucks, and light vehicles• Lighting towers and generators• Asphalt pavers, profilers, sealing equipment• Pumps, dewatering equipment, under boring machines• Shoring of excavations including sheet piling, shoring boxes, and steel plates• Cranes, piling rigs, and oversized vehicles for deliveries.


Contact us

 If you would like to provide feedback, or have any questions or complaints, please contact our 24-hour Construction Response Line **1800 818 433**

 **RP2JCommunity@fultonhogan.com.au**

 **nswroads.work/rp2j**

 **For the latest traffic updates:**
Call 132 701, visit [livetraffic.com](https://www.livetraffic.com) or download the app Live Traffic NSW

 **Interpreter service**
For languages other than English call 131 450

www.transport.nsw.gov.au/privacy-statement#Your_Privacy

How we measure noise (in dBA)

