



Safety improvements on Sir Bertram Stevens Drive and Audley Road, Royal National Park

Community Notification

July 2025



Transport for NSW acknowledges the Dharawal people as the Traditional Custodians of the lands on which we work and pays respect to Elders past and present.

Transport for NSW is carrying out safety improvements on Sir Bertram Stevens Drive and Audley Road in the Royal National Park.

We will be widening the road and extending the guardrail at the hairpin bend on Sir Bertram Stevens Drive, around 400 metres west of Flat Rock Creek Bridge.

This work is part of the Safer Roads Program to deliver sustainable and long-term improvements of existing road networks.

We will be stabilising embankments and repairing culverts on Audley Road. This essential work is part of ongoing maintenance of the state road network.

What work are we doing?

At Sir Bertram Stevens Drive, work includes:

- vegetation removal
- widening the westbound lane
- extending the safety guardrail
- drainage maintenance and improvements.

At Audley Road, work includes:

- road and culvert removal
- road and embankment stabilisation
- culvert and retaining wall reconstruction
- vegetation trimming
- road reconstruction.

When will we be working?

Work is expected to continue until late November 2025, weather permitting. Work will be carried out during the day between **7am** and **6pm**, **Monday to Friday**.

Work will be carried out at night between **8pm** and **5am**, **Sunday to Thursdays** and **Saturday** mornings between **8am** and **1pm**.

We will not work on Friday or Saturday nights.

Road closures and detours

From **Sunday 20 July** to **Friday 5 September**, road closures will be in place for up to **13 nights** between **8pm** to **5am**, including:

- **10 nights** at Audley Road between Princes Highway and Audley Weir, followed by
- **3 nights** at Sir Bertram Stevens Drive between Warumbul Road and Bundeena Drive.

Closures will not take place on Friday or Saturday.

Specific closure dates will be advertised on electronic road signs through the area.

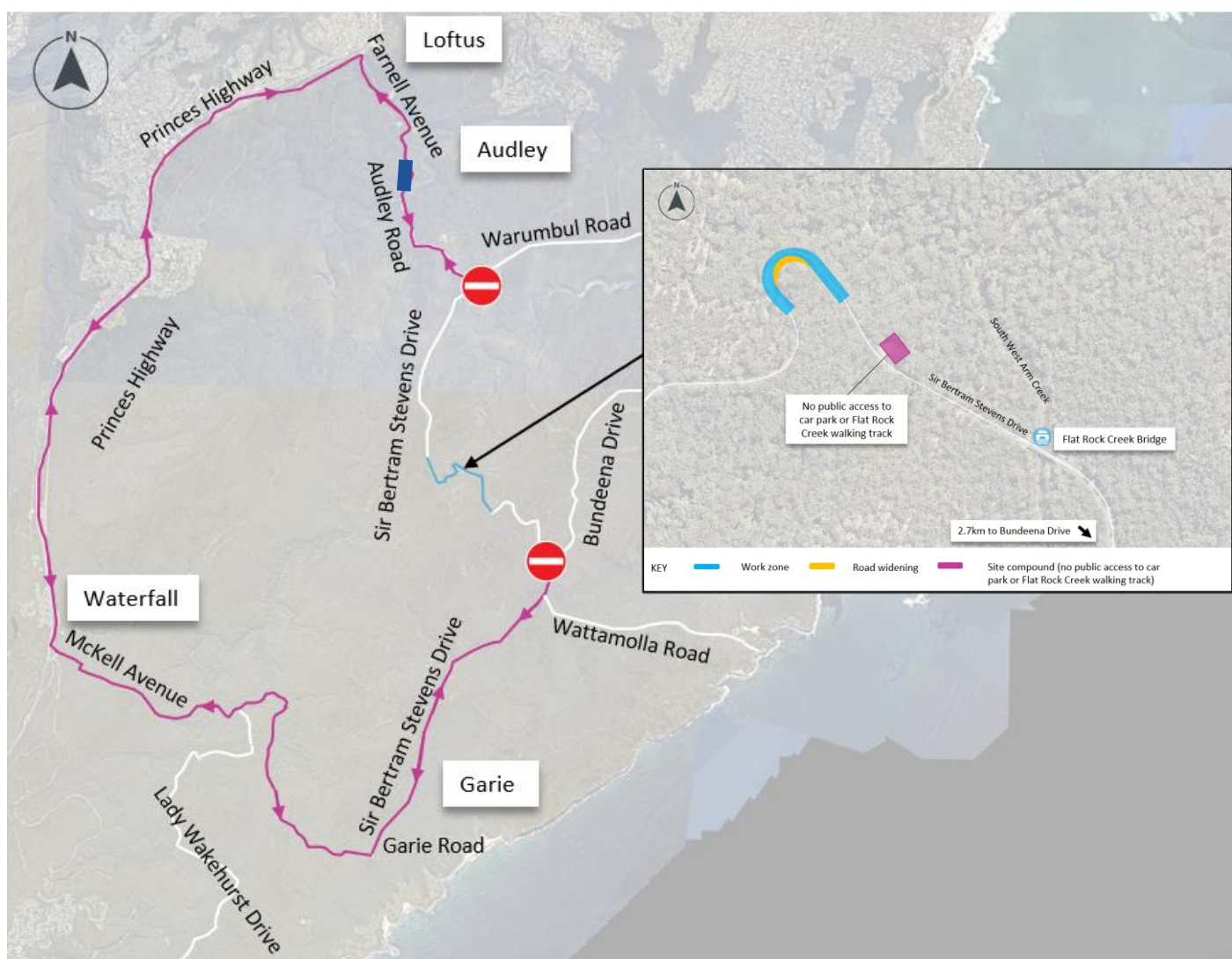
If you would like to be kept updated on the specific closure dates via email, please contact our delivery partner Connect Sydney via the details overleaf.

During overnight road closures, a detour will be in place via Princes Highway and McKell Avenue.

Please keep to speed limits and follow the direction of traffic controllers and signs and allow additional travel time when planning your journey.



Location of work area and detour



KEY Work area Detour route Road closure Audley Road slope and culvert repairs

Contact us



Audley Road **1800 735 563**
Sir Bertram Stevens Drive **1800 568 981**



Audley Road
info.harbour@connectsydney.com.au
Sir Bertram Stevens Drive
info.river@fultonhogan.com.au



transport.nsw.gov.au/rnpwork



Interpreter service

For languages other than English call **131 450**
Arabic • Greek • Hindi • Mandarin • Vietnamese

لطلب خدمة الترجمة الشفهية للغات غير الإنجليزية اتصل
بالرقم **131 450**

Για υπηρεσίες διερμηνείας σε άλλες γλώσσες εκτός από
τα Αγγλικά καλέστε το **131 450**

अंग्रेजी के अतिरिक्त अन्य भाषाओं के लिए दुभाषिया सेवा
131 450 पर कॉल करें

获取英语以外的其他语言口译协助服务可以致电**131 450**

Để có dịch vụ thông ngôn cho các ngôn ngữ khác tiếng
Anh, gọi số **131 450**