

Central Coast Highway and Tumbi Road

Intersection upgrade

July 2025



Transport for NSW acknowledges the Darkinjung people as the Traditional Custodians of the lands on which we work and pays respect to Elders past and present.

The Australian and NSW Governments are investing to upgrade the Central Coast Highway and Tumbi Road intersection.

As part of the plans to improve traffic flow and safety on the Central Coast Highway between Wamberal and Bateau Bay, the NSW Government has prioritised the most congested intersection at Central Coast Highway at Tumbi Road.

We will be continuing work on the upgrade during July.

What work are we doing?

Work includes:

- Installation of concrete safety barriers and signage
- Excavation and earthwork
- Pavement work
- Clearing vegetation

When and where we'll be working

We'll be working near the intersection of Central Coast Highway and Tumbi Road from **Tuesday 1 July to Thursday 31 July, 2025**, weather permitting.

Normal working hours are between **7am and 6pm** on **weekdays** and **8am and 1pm** on **Saturdays**.

Due to the high traffic volumes during the day, we will be carrying out works at night to minimise disruption to road users and ensure the safety of workers.

Out of hours work will happen at **night** between **7pm and 7am** from **Sunday to Thursday**.

What will this mean for you?

You may notice:

- Workers and vehicles
- Lane closures and traffic control
- A temporary reduced speed limit of 40km/h will be in place through the work zone for the safety of motorists and workers.
- Noise from machinery and equipment.

Please keep to speed limits and follow the direction of traffic controllers and signs.

Managing our impacts

The night work will involve the use of machinery which generates noise.

We will make every effort to minimise noise by turning off machinery and vehicles when not in use.

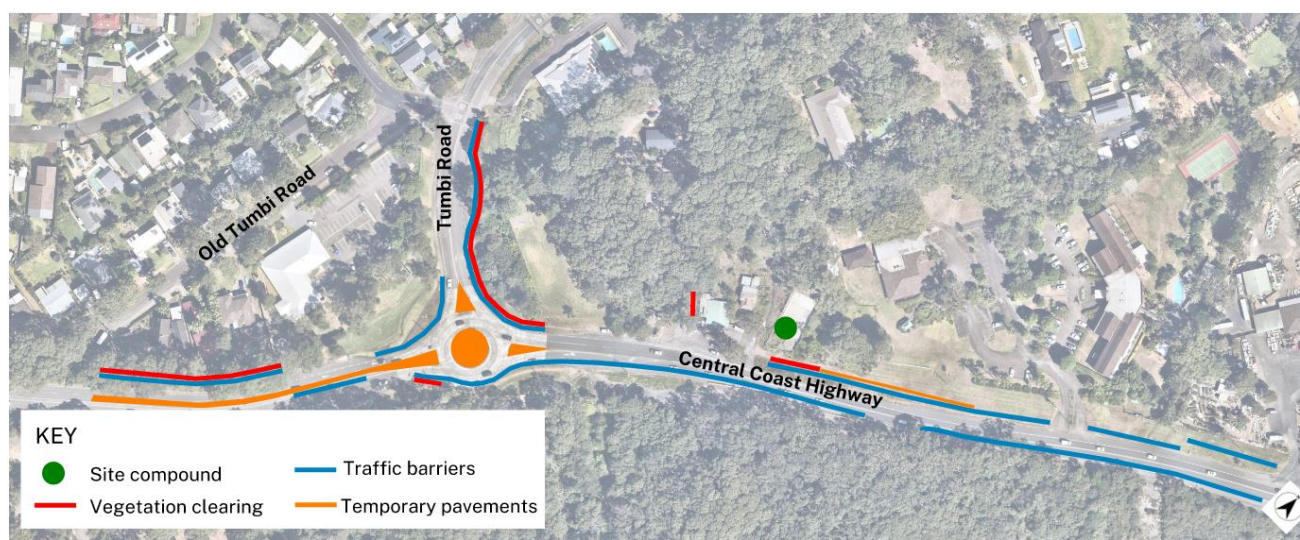
Directly affected residents will be contacted and advised of the likely impact and what we are doing to minimise disruption during the work.



Our night work schedule (weather permitting)

Activity and location	Duration	Timing	Equipment to be used
Installation of concrete safety barriers on Central Coast Highway between Old Tumbi Road and Forresters Sand and Soil and on the northern side of Tumbi Road to Dalpura Road.	10 nights	Traffic control, non-destructive vacuum truck, crane, excavator, delivery trucks, lighting towers, light vehicles, small trucks	
Clearing and removal of vegetation	5 nights	Traffic control, excavator, chainsaws, grinder, trucks, lighting towers, light vehicles	
Pavement work – removal and replacement around the Central Coast Highway / Tumbi Road roundabout	5 nights	Traffic control, excavator, trucks, lighting towers, light vehicles	
Delivery of plant and equipment to site, as required			

Location of work area



Contact us



Project Infoline **1800 490 636**



tumbi@daracon.com.au



roads-waterways.transport.nsw.gov.au



Interpreter service

For languages other than English call **131 450**
Arabic • Greek • Hindi • Mandarin • Vietnamese

لطلب خدمة الترجمة الشفهية للغات غير الإنجليزية اتصل
بالرقم **131 450**

Για υπηρεσίες διερμηνείας σε άλλες γλώσσες εκτός από
τα Αγγλικά καλέστε το **131 450**

अंग्रेज़ी के अतिरिक्त अन्य भाषाओं के लिए दुभाषिया सेवा
131 450 पर कॉल करें

获取英语以外的其他语言口译协助服务可以致电**131 450**

Để có dịch vụ thông ngôn cho các ngôn ngữ khác tiếng
Anh, gọi số **131 450**

www.transport.nsw.gov.au/privacy-statement#Your_Privacy



For the latest traffic updates:

Call **132 701**, visit livetraffic.com or
download the app Live Traffic NSW