

# Central Coast Highway and Tumbi Road

## Intersection upgrade

July 2025



Transport for NSW acknowledges the Darkinjung people as the Traditional Custodians of the lands on which we work and pays respect to Elders past and present.

The Australian and NSW Governments are investing \$65.5 million to upgrade the Central Coast Highway and Tumbi Road intersection.

As part of the plans to improve traffic flow and safety on the Central Coast Highway between Wamberal and Bateau Bay, the NSW Government has prioritised the most congested intersection at Central Coast Highway at Tumbi Road.

We will be continuing work on the upgrade during August.

### What work are we doing?

Work includes:

- Excavation and earthwork
- Pavement work
- Clearing and removal of vegetation
- Services investigation and installing new services

### When and where we'll be working

This monthly update covers from **Friday 1 August to Sunday 31 August, 2025**, weather permitting.

Normal working hours are between **7am** and **6pm** on **weekdays** and **8am** and **1pm** on **Saturdays**.

Due to the high traffic volumes during the day, we will be carrying out works at night to minimise

disruption to road users and ensure the safety of workers.

Out of hours work will happen at **night** between **7pm** and **7am** from **Sunday** to **Thursday**.

### What will this mean for you?

You may notice:

- Workers and vehicles
- Lane closures and traffic control
- A temporary reduced speed limit of 40km/h will be in place through the work zone for the safety of motorists and workers.
- Noise from machinery and equipment.

Please keep to speed limits and follow the direction of traffic controllers and signs.

### Managing our impacts

The night work will involve the use of machinery which generates noise.

We will make every effort to minimise noise by turning off machinery and vehicles when not in use.

Directly affected residents will be contacted and advised of the likely impact and what we are doing to minimise disruption during the work.

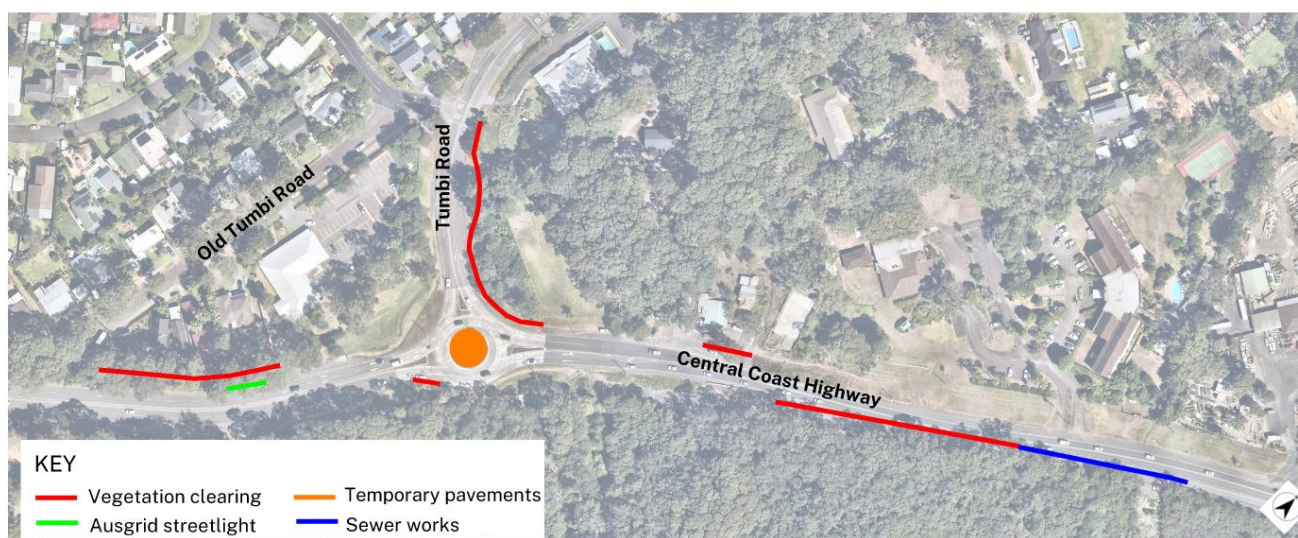


To subscribe to the email distribution list for this project, please contact [tumbi@daracon.com.au](mailto:tumbi@daracon.com.au)

## Our night work schedule (weather permitting)

Activity and location	Duration	Equipment to be used
Clearing and removal of vegetation	5 nights	Traffic control, excavator, chainsaws, grinder, trucks, lighting towers, light vehicles
Pavement work – removal and replacement around the Central Coast Highway / Tumbi Road roundabout	10 nights	Traffic control, excavator, trucks, lighting towers, concrete trucks, concrete pumps, light vehicles
Ausgrid overhead street lighting works	1 night	Traffic control, trucks, lighting towers, bucket trucks/elevated work platforms, light vehicles
Sewer installation works	5 nights	Traffic control, excavator, trucks, lighting towers, light vehicles
Delivery of plant and equipment to site, as required		

## Location of work area



## Contact us



Project Infoline **1800 490 636**



**tumbi@daracon.com.au**



**roads-waterways.transport.nsw.gov.au**



### Interpreter service

For languages other than English call **131 450**  
Arabic • Greek • Hindi • Mandarin • Vietnamese

لطلب خدمة الترجمة الشفهية للغات غير الإنجليزية اتصل  
بالرقم **131 450**

Για υπηρεσίες διερμηνείας σε άλλες γλώσσες εκτός από  
τα Αγγλικά καλέστε το **131 450**

अंग्रेज़ी के अतिरिक्त अन्य भाषाओं के लिए दुभाषिया सेवा  
**131 450** पर कॉल करें

获取英语以外的其他语言口译协助服务可以致电**131 450**

Để có dịch vụ thông ngôn cho các ngôn ngữ khác tiếng  
Anh, gọi số **131 450**

[www.transport.nsw.gov.au/privacy-statement#Your\\_Privacy](http://www.transport.nsw.gov.au/privacy-statement#Your_Privacy)



### For the latest traffic updates:

Call **132 701**, visit [livetraffic.com](http://livetraffic.com) or  
download the app Live Traffic NSW