



# Central Coast Highway and Tumbi Road

## Intersection Upgrade

June 2025



Transport for NSW acknowledges the Darkinjung people as the Traditional Custodians of the lands on which we work and pay respects to Elders past and present.

### The Australian and NSW Governments are investing to upgrade the Central Coast Highway and Tumbi Road intersection.

As part of the plans to improve traffic flow and safety on the Central Coast Highway between Wamberal and Bateau Bay, the NSW Government has prioritised the most congested intersection at Central Coast Highway at Tumbi Road.

Transport for NSW have awarded Daracon the contract for the upgrade.

### What work are we doing?

We will be starting site establishment during June.

Work includes:

- Survey work
- Site investigations
- Installation of concrete safety barriers and signage
- Environmental controls
- Clearing vegetation
- Establishment of a site compound.

### When and where we'll be working?

We'll be working near the intersection of Central Coast Highway and Tumbi Road from **Monday 2 June to Monday 30 June, 2025**, weather permitting.

Normal working hours are between **7am** and **6pm** on **weekdays** and **8am** and **1pm** on **Saturdays**.

Due to the high traffic volumes during the day, we will be carrying out works at night to minimise disruption to road users and ensure the safety of workers.

Out of hours work will happen at **night** between **7pm** and **7am** from **Sunday** to **Thursday**.

### What will this mean for you?

You may notice:

- Workers and vehicles
- Lane closures and traffic control
- A temporary reduced speed limit of 60km/h will be in place through the work zone for the safety of motorists and workers. This may be reduced further to 40 km/h for some activities.
- Noise from machinery and equipment.

Please keep to speed limits and follow the direction of traffic controllers and signs.

### Managing our impacts

The night work will involve the use of machinery which generates noise.

We will make every effort to minimise noise by turning off machinery and vehicles when not in use.

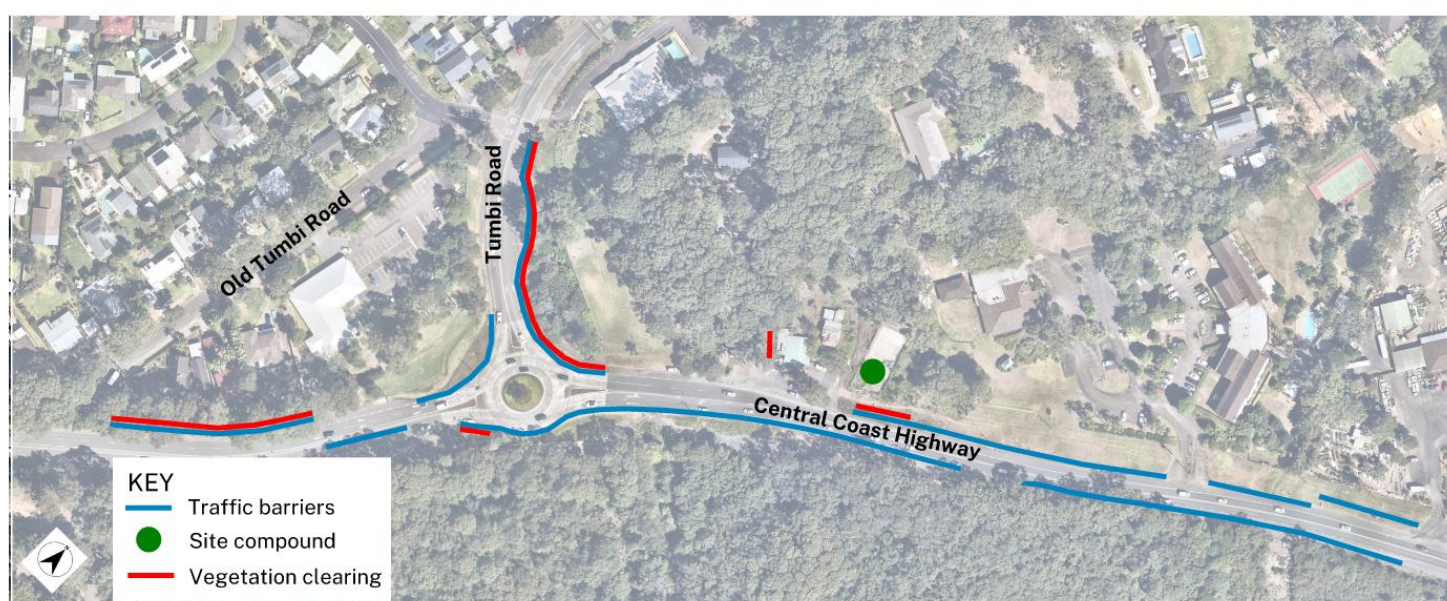
Directly affected residents will be contacted and advised of the likely impact and what we are doing to minimise disruption during the work.



## Our night work schedule (weather permitting)

Activity and location	Duration	Equipment to be used
Installation of concrete safety barriers on Central Coast Highway between Old Tumby Road and Forrester's Sand and Soil and on the northern side of Tumby Road to Dalpura Road.	10 nights	Traffic control, non-destructive vacuum truck, crane, excavator, delivery trucks, lighting towers, light vehicles, small trucks
Delivery and establishment of site compound at 869 Central Coast Highway	2 nights	Traffic control, crane, delivery trucks, light vehicles,
Clearing and removal of vegetation	5 nights	Traffic control, excavator, chainsaws, grinder, trucks, lighting towers, light vehicles,
Delivery of plant and equipment to site, as required		

## Location of work area



## Contact us



Project Infoline **1800 490 636**



**tumbi@daracn.com.au**



**roads-waterways.transport.nsw.gov.au**



### Interpreter service

For languages other than English call 131 450  
Arabic • Greek • Hindi • Mandarin • Vietnamese

لطلب خدمة الترجمة الشفهية للغات غير الإنجليزية اتصل  
بالرقم **131 450**

Για υπηρεσίες διερμηνείας σε άλλες γλώσσες εκτός από  
τα Αγγλικά καλέστε το **131 450**

अंग्रेज़ी के अतिरिक्त अन्य भाषाओं के लिए दुभाषिया सेवा  
**131 450** पर कॉल करें

获取英语以外的其他语言口译协助服务可以致电**131 450**

Để có dịch vụ thông ngôn cho các ngôn ngữ khác tiếng  
Anh, gọi số **131 450**