

Community Update

Victoria Pass Slope Repairs

March 2025



Australian Government



Failed slope on the Great Western Highway at Victoria Pass

Transport for NSW (Transport) is carrying out repairs to two damaged slopes on the Great Western Highway at Victoria Pass.

In July 2022 extreme weather damaged two embankments on the Great Western Highway at Victoria Pass. A downslope embankment failure east of Mitchells Causeway, and an upslope failure west of the causeway, have caused significant impacts to the Great Western Highway.

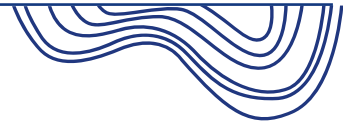
Victoria Pass is a key connection between Sydney and Western NSW which is currently operating at a reduced capacity.

The Australian and NSW Governments are funding vital slope repair work on Victoria Pass. Work will start in April 2025 after Transport carried out extensive investigations to design the complex repair work and provide a long-lasting solution.

In this update

Find out about:

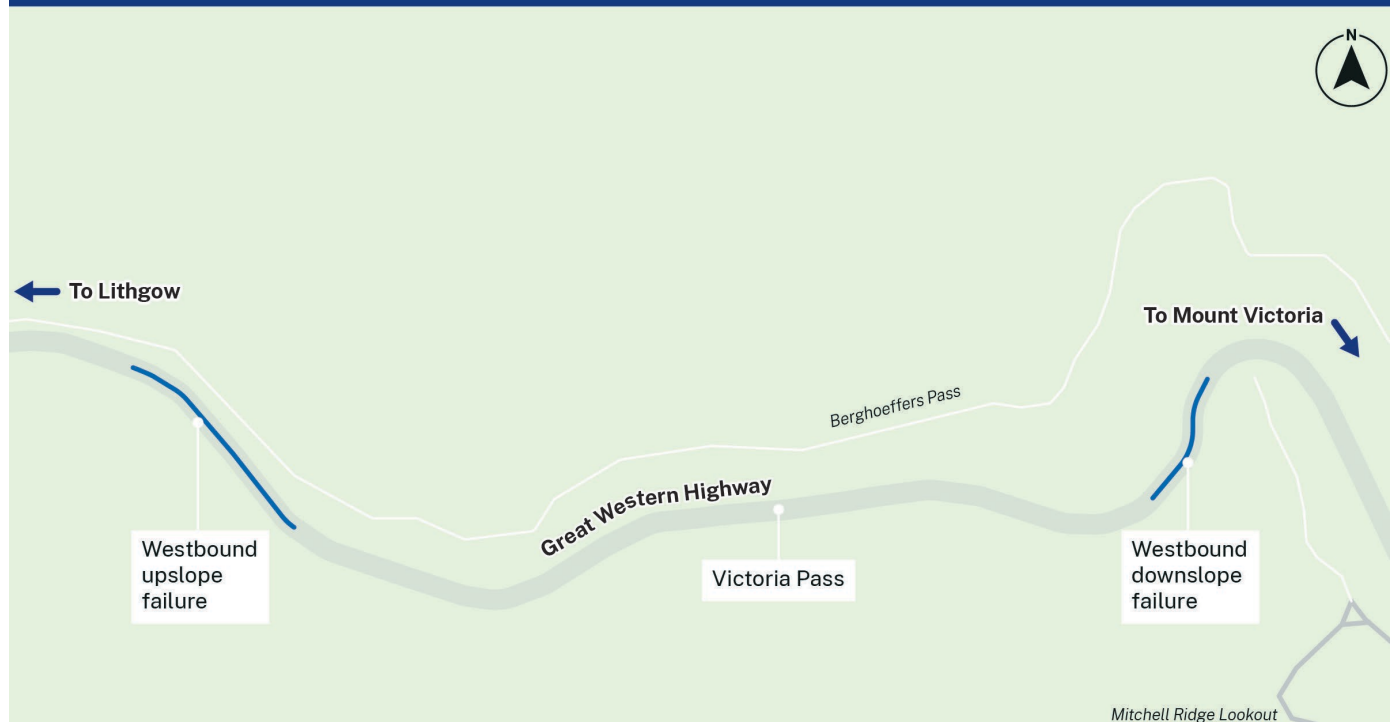
- Location of failed slopes
- The repair work we are carrying out
- Traffic impacts and detours
- What this project means for you
- Project timeline and next steps



Where are the failed slopes?

Both slope failures are located on the westbound slow lane on the Great Western Highway at Mount Victoria - a downslope embankment failure east of Mitchells Causeway, and an upslope failure west of the causeway.

Victoria Pass Slope Failures



What repair work are we carrying out?

Treatment for the westbound upslope failure will include:

- removing loose rocks from the slope
- replacing and extending drapage mesh netting to catch future slope debris
- installing a new drain at top of slope to capture rainwater and stop it damaging the rock face
- rock bolting
- rock fall fencing.

Treatment for the downslope failure will involve

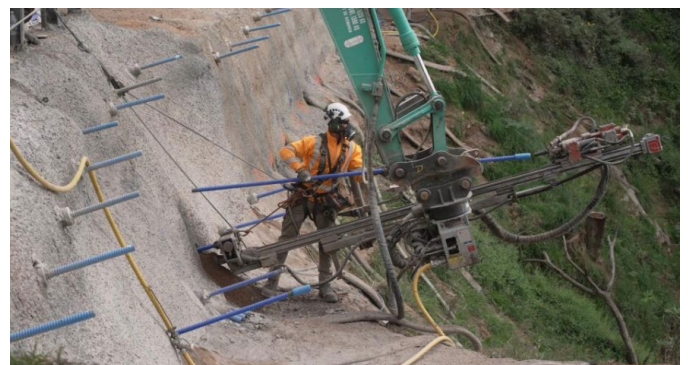
- installing approximately 300 soil nails
- installing reinforcement mesh
- shotcreting
- improving drainage.

This will reinforce the road embankment and allow us to restore the road pavement..

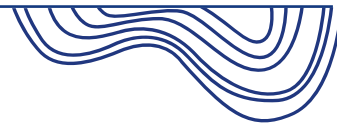
Soil nailing

Soil nails are used to treat unstable natural or man-made soil slopes. Holes are drilled and the team install and grout the nails in place. We then apply reinforcing mesh and shotcrete to complete the soil nail wall.

Soil nail walls typically have a smaller environmental impact than other methods that could have been used, given they can be completed relatively quickly using minimal materials.



An example of installing soil nails into a slope face. Similar treatment will form part of the downslope repairs.



Detour route

Victoria Pass Slope Repairs (road closure and detour)



Traffic impacts and detours

For the safety of workers and road users, **the Great Western Highway will be closed in both directions during work hours on select nights during April** – see full dates on the back of this update.

Motorists will be detoured via Darling Causeway and Chifley Road through Lithgow.

Please allow an extra 15 minutes' travel time.

Works will continue until the end of 2025. As the project progresses only the westbound lanes will be impacted. We will keep the community updated on these closures.

If works are cancelled due to weather or other circumstances, we can also notify road users so that you can plan your journey with up-to-date information.

To receive email or SMS updates, visit the project website at transport.nsw.gov.au/vicpass or email us at bluemountains@transport.nsw.gov.au to be added to the distribution list.

What will this mean for you?

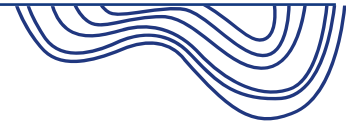
Transport will work at night to minimise impacts to traffic, as around 13 per cent of total traffic on Victoria Pass travels between 8pm and 5am.

We will use other measures to try to minimise impacts to the community and the environment, such as targeting lighting to minimise light spill and turning off machinery and vehicles when not in use.

Residents and businesses in Lithgow and Mount Victoria may notice an increase in traffic while the detours are in place. Transport has traffic management plans in place to prevent congestion in the Lithgow community as a result from the detours.

You may notice two site compounds for the project – one at Mitchells Ridge Lookout at Mount Victoria, and another at the bottom of Victoria Pass off the Great Western Highway.

If you have any concerns or questions, please contact the project team on 1800 953 777 (option 4).



Next steps

Project timeline



Community information sessions

Meet the project team and find out more about the work at our community information sessions:

Hartley Fresh Café: 26 March, 8am-10am

Lithgow Plaza: 26 March, 3pm-5pm

Mount Victoria Rotunda Park: 27 March, 8am-10am

Full road closures

We will work the following nights in April 2025 under full road closures, weather permitting:

- Tue 1, Wed 2, Thu 3, April
- Sun 6, Mon 7, Tue 8, Wed 9, Thu 10 April
- Mon 14, Tue 15, Wed 16 April
- Tue 22, Wed 23 April
- Mon 28, Tue 29 April.

Project duration and work hours

Works will take up to nine months from 1 April 2025, weather permitting. Working hours will be **8pm to 5am, Monday to Thursday, and 7pm to 5am on Sundays**. We will not work on Friday or Saturday nights, public holidays or during peak travel periods.

Subscribe for updates

We will send regular email and SMS updates as the project progresses. To hear about road closures, detours or if works are cancelled, visit the project website at transport.nsw.gov.au/vicpass to be added to the distribution list.



Contact us



Project Infoline **1800 953 777**
Press 4 for Transport for NSW



bluemountains@transport.nsw.gov.au



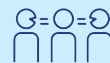
www.transport.nsw.gov.au/vicpass



**51-55 Currajong Street
Parkes, NSW 2870**



For the latest traffic updates:
Call 132 701, visit [livetraffic.com](https://www.livetraffic.com) or
download the app Live Traffic NSW



Interpreter service

For languages other than English call **131 450**
Arabic • Greek • Hindi • Mandarin • Vietnamese

طلب خدمة الترجمة الشفهية للغات غير الإنجليزية اتصل
بالرقم **131 450**

Για υπηρεσίες διερμηνείας σε άλλες γλώσσες εκτός από
τα Αγγλικά καλέστε το **131 450**

अंग्रेजी के अतिरिक्त अन्य भाषाओं के लिए दुभाषिया सेवा
131 450 पर कॉल करें

获取英语以外的其他语言口译协助服务可以致电**131 450**

Để có dịch vụ thông ngôn cho các ngôn ngữ khác
tiếng Anh, gọi số **131 450**

www.transport.nsw.gov.au/privacy-statement#Your Privacy