

Rail Service Improvement Program

Arncliffe, Wolli Creek, and Tempe

March 2025



Transport for NSW acknowledges the Gweagal, Bidjigal and Gadigal Clans for the Eora Nation as the Traditional Custodians of the lands on which we work and pays respect to Elders past and present.

The Rail Service Improvement Program, formerly known as More Trains, More Services, enables a safer, more equitable, and integrated transport network where people can travel more safely, reliably, and efficiently across NSW.

What work are we doing?

Several infrastructure improvements are currently being delivered in your area as part of this program, including:

- Wolli Creek Power Supply Upgrade project
- Arncliffe to Tempe Signalling Upgrade project.

In March, we will be:

- removing redundant overhead wiring and electrical poles including light landscaping
- upgrading and testing electrical cables and signalling infrastructure including cable gantry work
- installing signalling structure foundations and associated cabling
- signalling commissioning work in the rail corridor between Arncliffe and Sydenham
- decommissioning and removing electrical equipment and redundant assets from Undercliffe Substation (Wolli Creek) in preparation for demolition currently rescheduled to April-May 2025

- preparatory work for access into the rail corridor at Arncliffe including a concrete pour near the commuter car park (standard hours only).

Please note you may have been notified of this work from September through to December 2024, which was previously cancelled due to Protected Industrial Action.

When and where we'll be working

Work will take place inside and adjacent to the rail corridor between Arncliffe and Tempe, including the following locations in and around Wolli Creek:

- Spark Lane between Chisholm Street and Mount Olympus Boulevard
- Discovery Point Park
- Guess Avenue between Mount Olympus Boulevard and Bonar Street
- Corner Chisholm Street and Brodie Spark Drive
- Lusty Street and Tempe site compounds
- Mount Olympus Boulevard at Magdalene Terrace into the rail corridor
- Arncliffe Street north of the train station
- Henderson Street at Turrella.

To view all work activities and work areas in more detail across the program, please visit caportal.com.au/tfnsw/rsip and explore the interactive construction map.

Other work activities to occur during standard construction hours this month include: site set up, upgrading, testing and commissioning of electrical cables, decommissioning and removal of electrical equipment activities at the



Undercliffe Substation, and installation of a footpath within the rail corridor.

Standard construction hours on this project are between **7am and 6pm Monday to Friday and 8am and 1pm on Saturdays**.

Out of hours work

Due to safety requirements, some work is required to take place outside of standard construction hours.

This work will take place between:

- **6pm Wednesday 12 March and 6am Wednesday 19 March**
- **6pm Wednesday 26 March and 6am Wednesday 2 April.**

Please also note there will be **rail replacement buses replacing train services** on the weekend of **29 and 30 March** and other agencies will be working in the area. **Please plan ahead for your travel.**

Why we work outside of construction hours

Work will not be continuous. We schedule work outside of standard construction hours to take place during Sydney Trains trackwork periods when no trains are running, minimising disruptions to commuter services and improving the safety of our construction team and customers. This includes accommodating oversize deliveries on local roads.

What will this mean for you?

You may notice:

- an increase in workers and construction vehicles
- temporary changes to driveway access at 95, 97, and 99 Bonar Street
- increased noise from machinery and equipment, including a mobile crane, chainsaws, hand tools, vacuum trucks, concrete agitator, generators, crane truck and other plant
- temporary traffic changes, signage, and minor detours on the following streets: Chisholm Street, Spark Lane, Mount Olympus Boulevard, Guess Avenue, Brodie Spark Drive, and Lusty Street.

We apologise for any short delays you may experience while our construction vehicles and machines enter and exit the rail corridor under the direction of traffic control. Residential access

through local streets will remain open at all times.

Traffic changes in the area – please plan ahead

Guess Avenue

To safely complete the removal of electrical infrastructure, some traffic changes are required between **6pm Friday 28 March and 6pm Sunday 30 March**, including;

- **closing the southeast lane intermittently on Guess Avenue** between Bonar Street and Mount Olympus Boulevard with some temporary removal of on-street parking
- **driveway access at 95 and 97, and 99 Bonar Street from Guess Avenue** will have stop/slow access for periods of up to 10 minutes at a time from **6am Saturday 29 March to 6pm Sunday 30 March**. This includes the Willis Street exit-only laneway connecting to Guess Avenue beside 97 Bonar Street.

Should access to your property be temporarily impacted during this work, you will be contacted directly ahead of work commencing.

We apologise for any inconvenience this work may cause.

Spark Lane, Chisholm Street, and Brodie Spark Drive

To safely remove oversized electrical infrastructure components, some traffic changes are required between **5am Saturday 29 March and 2am Sunday 30 March**, including;

- **temporarily closing the road intermittently on Spark Lane, Chisholm Street, and Brodie Spark Drive** and some temporary removal of on-street parking
- **temporarily restricting access to driveways on Spark Lane between Chisholm Street and Mount Olympus Boulevard, and Brodie Spark Drive**, which will have stop/slow access for periods of up to 10 minutes at a time to allow safe access for heavy vehicles.

Traffic control will be in place to safely direct motorists and pedestrians around the work areas. Whilst driveway access will remain open in this area when safe to do so, **please plan ahead for your trips** due to stop/slow traffic flow expected in the area.

Should access to your property be temporarily impacted during this work, you will be contacted directly ahead of work commencing.

We apologise for any inconvenience this work may cause.

Temporary site compound set-up

From June 2024 to late 2025, a site compound was established in Tempe, south of the station car park adjacent to Richardsons Crescent. This area will continue to be used to store plant and other work materials, facilitate worker parking, and provide access to the rail corridor.

Some staff parking may be required in the adjacent commuter car park, west of Tempe Station. These spaces will be required during Sydney Trains trackwork periods when no trains are running, minimising disruptions to commuters.

Managing our impacts

We understand construction activities may cause disruption to our closest neighbours, and every effort will be made to minimise impacts, including:

- locating equipment as far away from residents and businesses as possible

- ensuring lighting towers are directed downwards and away from residents
- traffic control set up on roads and within the car park at Arncliffe Station.

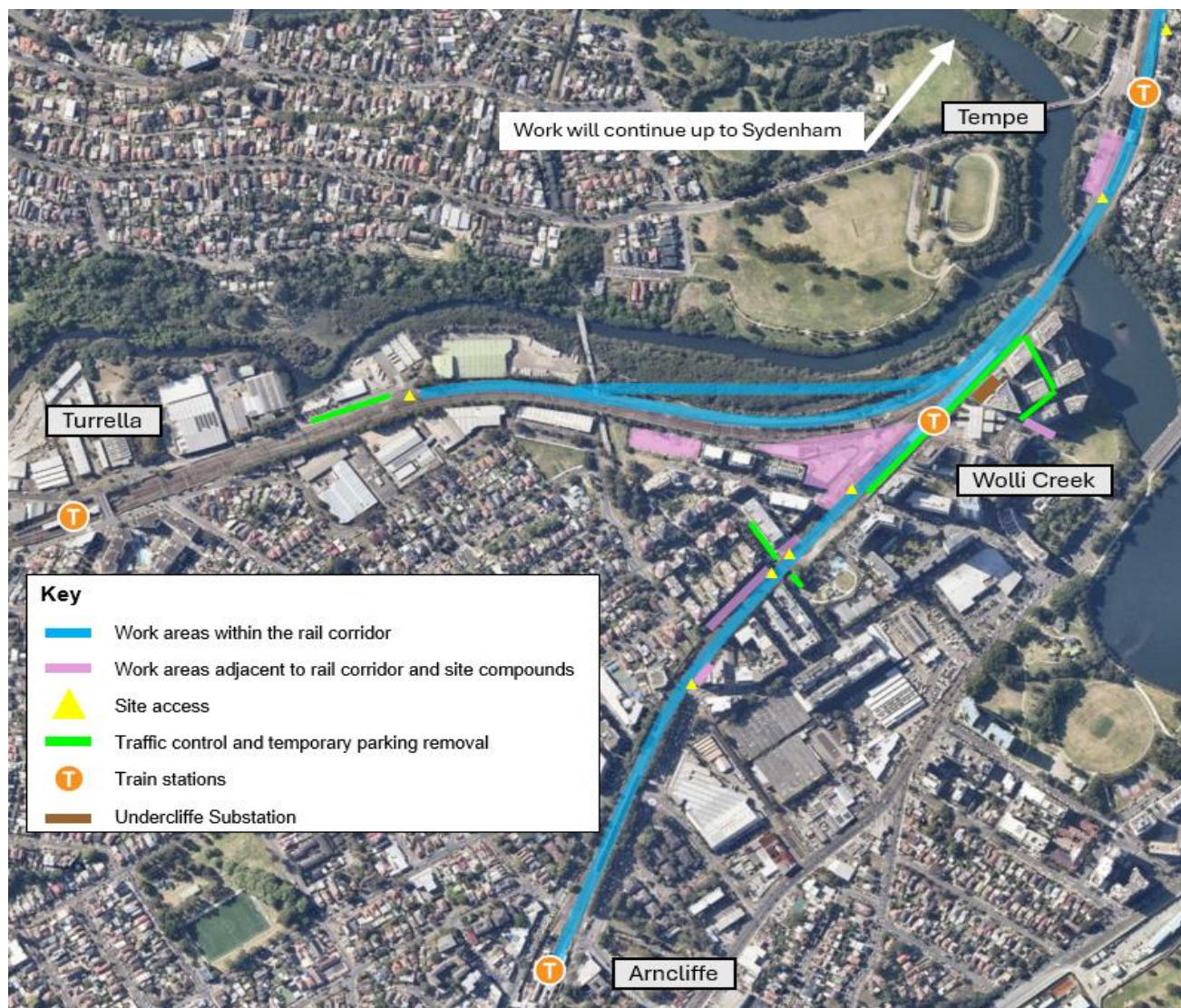
Protected Industrial Action

Protected Industrial Action has recently been taking place in New South Wales, which may again lead to future changes and last-minute rescheduling of Rail Service Improvement Program work.

We will make every effort to notify you of changes that occur due to industrial action. We apologise for any inconvenience this may cause.

Location of work areas

Please note these maps are indicative only and not to scale. Temporary laydown areas along the rail corridor will be used for deliveries, storage of materials and equipment, worker briefings and parking.



Contact us



Project Infoline **1800 684 490**
24-hour Construction Response Line
1800 775 465



projects@transport.nsw.gov.au



yoursay.transport.nsw.gov.au/mtms



Visit the online portal go to
caportal.com.au/tfnsw/rsip



Interpreter service

For languages other than English call 131 450
Arabic • Greek • Hindi • Mandarin • Vietnamese

لطلب خدمة الترجمة الشفهية للغات غير الإنجليزية اتصل
بالرقم **131 450**

Για υπηρεσίες διερμηνείας σε άλλες γλώσσες εκτός από
τα Αγγλικά καλέστε το **131 450**

अंग्रेज़ी के अतिरिक्त अन्य भाषाओं के लिए दुभाषिया सेवा
131 450 पर कॉल करें

获取英语以外的其他语言口译协助服务可以致电**131 450**

Để có dịch vụ thông ngôn cho các ngôn ngữ khác tiếng
Anh, gọi số **131 450**

www.transport.nsw.gov.au/privacy-statement#Your_Privacy



For the latest traffic updates:

Call 132 701, visit livetraffic.com or
download the app Live Traffic NSW