

Essential road maintenance on the Newell Highway at Edgeroi

August 2025



Transport for NSW acknowledges Aboriginal people as the Traditional Custodians of the lands on which we work and pays respect to Elders past and present.

Transport for NSW are carrying out essential road maintenance on the Newell Highway, north of Narrabri at Edgeroi.

What work are we doing?

Work includes heavy patching a 2.1 kilometre section of the Newell Highway at Edgeroi from about 400 metres north of the intersection with Queen Street to about 1.2 kilometres south of the intersection with Couradda Road.

We have included a map over the page to show the location of the work.

When we'll be working

We'll be working from **Monday 18 August 2025 to Friday 12 September (four weeks), weather permitting.**

Work hours are from **7am to 5pm, Monday to Friday.**

What will this mean for you?

You may notice:

- workers and vehicles
- traffic controllers and signage
- lane closures and reduced speed limits
- noise from machinery and equipment.

Managing our impacts

We aim to manage our work to avoid impacts to road users and residents.

This includes:

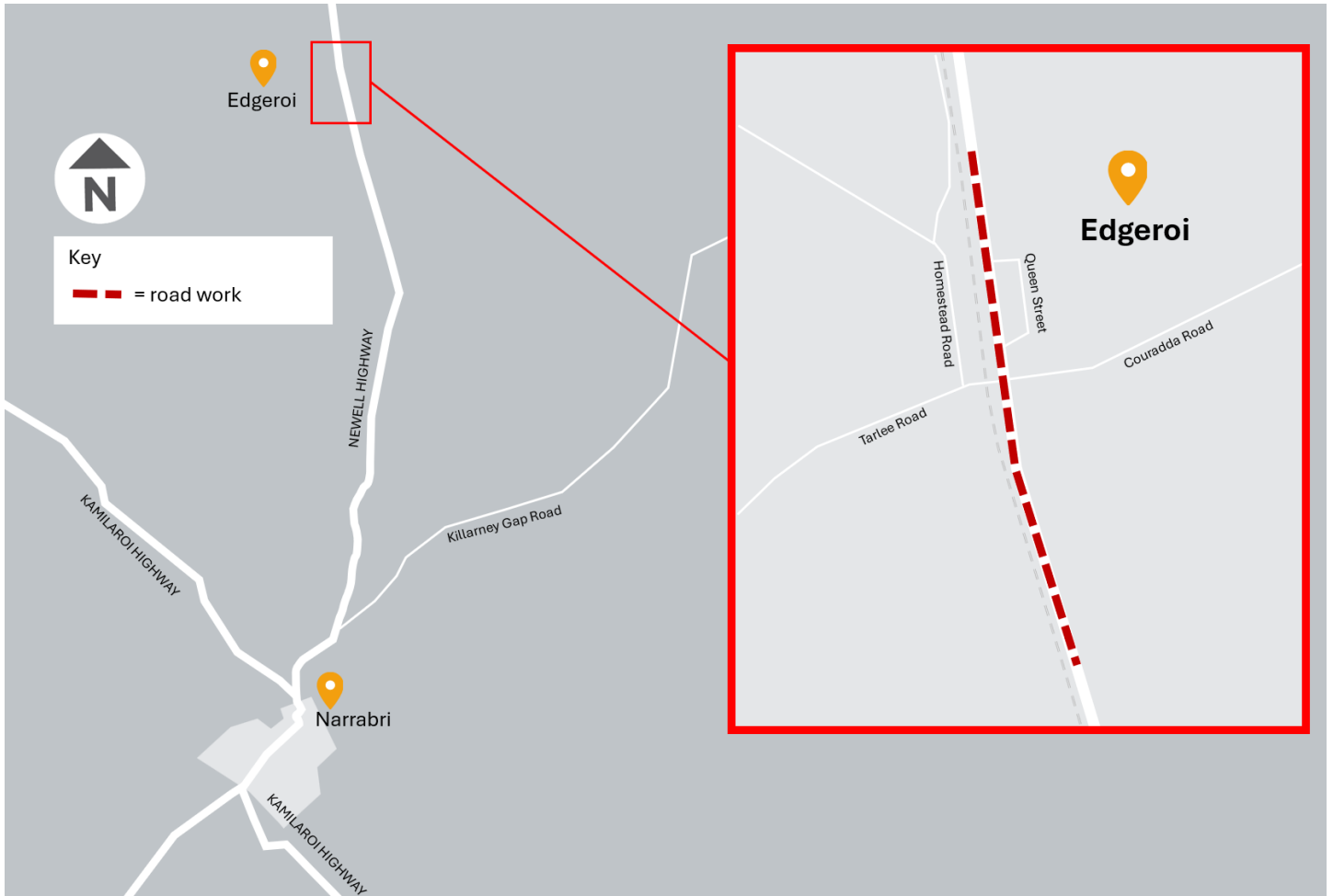
- implementing traffic control, single lane closures and alternating stop/slow with a reduced speed limit of 40km/h during work hours for the safety of workers and motorists
- keeping delays to a minimum during work hours
- outside work hours, there will be a reduced speed limit of 60km/h until works are complete
- maintaining property access at all times.

Motorists are advised to drive to the conditions and follow the direction of signs and traffic control.

For more information about this work, visit <https://www.livetraffic.com/incident-details/245563> or download the Live Traffic NSW App.

To receive updates on your phone, search "Newell Highway between Queen Street and Couradda Road" in the app, select the incident and click "Follow".

Location of work area



Contact us



Project Infoline **1800 167 499**



western.projects@transport.nsw.gov.au



www.transport.nsw.gov.au



51 – 55 Currajong Street
PARKES, NSW 2870



For the latest traffic updates:

Call 132 701, visit livetraffic.com or
download the app Live Traffic NSW



Interpreter service

For languages other than English call **131 450**
Arabic • Greek • Hindi • Mandarin • Vietnamese

لطلب خدمة الترجمة الشفهية للغات غير الإنجليزية اتصل
بالرقم **131 450**

Για υπηρεσίες διερμηνείας σε άλλες γλώσσες εκτός από
τα Αγγλικά καλέστε το **131 450**

अंग्रेज़ी के अतिरिक्त अन्य भाषाओं के लिए दुभाषिया सेवा
131 450 पर कॉल करें

获取英语以外的其他语言口译协助服务可以致电**131 450**

Để có dịch vụ thông ngôn cho các ngôn ngữ khác tiếng
Anh, gọi số **131 450**

<https://www.transport.nsw.gov.au/privacy-statement>