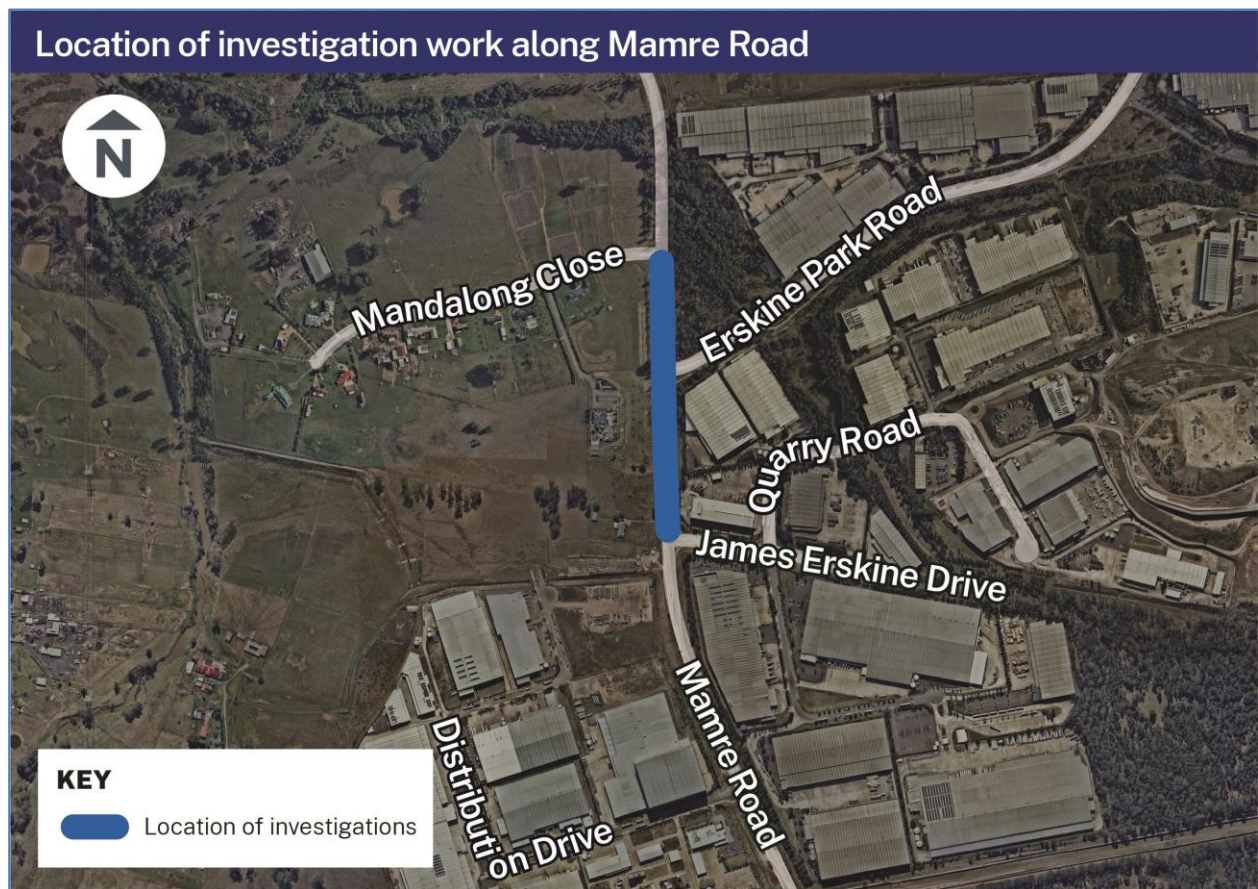


## Night investigations on Mamre Road between the M4 Motorway, St Clair and James Erskine Drive, Erskine Park from Tuesday 1 November

The NSW Government is planning the upgrade of Mamre Road between the M4 Motorway, St Clair and Erskine Park Road, Erskine Park to reduce congestion and improve safety and travel times.



### Our work

Transport for NSW will carry out investigation work to inform the detailed design. Investigations will be mainly at Mamre Road and Erskine Park Road intersection. We will be using utility/site vehicles, traffic control vehicles and equipment, backhoe or small excavator, truck mounted-drilling rig and vacuum truck to carry out this work.

### Our work schedule

Investigations will take place for **three nights** between **Tuesday 1 November** and **Friday 18 November**, weather permitting. Work will be undertaken during the hours of **9pm to 5am weekdays**. We will not work for more than two consecutive nights at the same location.

## How will the work affect you?

Our work may be noisy at times, but we will do everything we can to minimise its impact including carrying out noisier work before midnight and facing lighting away from residences.

## Traffic changes

There may be temporary lane closures. Please keep to the speed limits, follow the signs and traffic controllers' directions. For the latest traffic updates, you can call 132 701, visit [livetraffic.com](http://livetraffic.com) or download the Live Traffic NSW App.

Thank you for your patience during this important work.

## Contact us

If you have any questions or would like more information on the Mamre Road upgrade, please contact our project team:



1800 696 564



[mamreroadupgrade@transport.nsw.gov.au](mailto:mamreroadupgrade@transport.nsw.gov.au)



<http://nswroads.work/mamreroadupgrade>



PO Box 973 Parramatta NSW 2124



If you need help understanding this information, please contact the Translating and Interpreting Service on **131 450** and ask them to call us on **1800 696 654**