


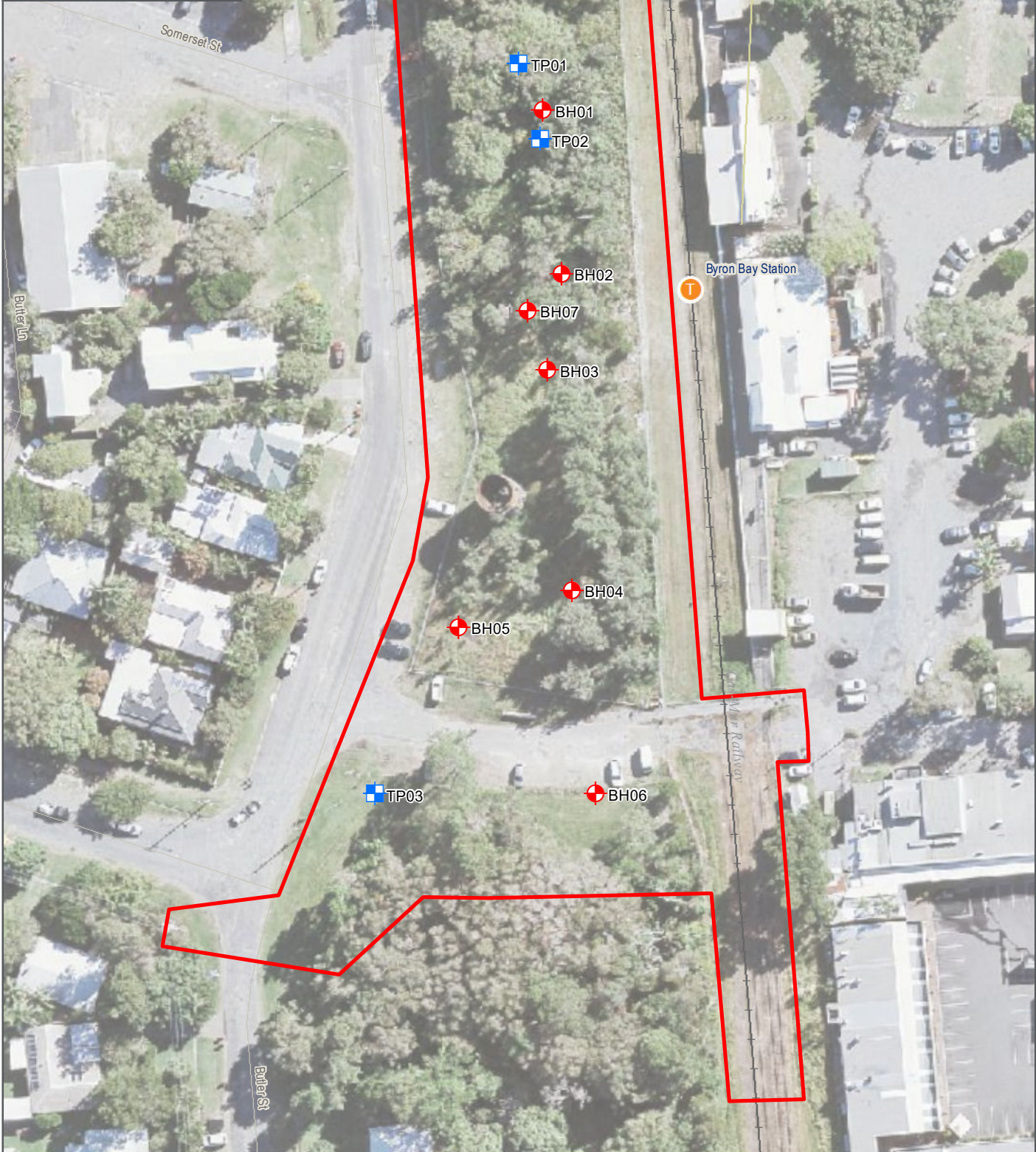
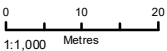


**LEGEND**

-  Borehole Locations
-  Test Pit Locations
-  Proposal Area



<b>DATE</b> 09/04/2019		<b>PAGE SIZE</b> A4	<b>COORDINATE SYSTEM</b> GDA 1994 MGA Zone 56
<b>FIG NO.</b> 5-12	<b>FIGURE TITLE</b> Geotech Investigation Location Plan		
<b>PROJECT NO.</b> 30011906	<b>PROJECT TITLE</b> Byron Bay Station REF		
<b>CREATED BY</b> EC13990	<b>SOURCES</b> Public_NSW_Imagery: © Department of Finance, Services & Innovation 2019, Roadnet MDS 2019		



© SMEC Australia Pty Ltd 2019. All Rights Reserved

Disclaimer: While all reasonable care has been taken to ensure the information contained on this map is up to date and accurate, this map contains data from a number of sources - no warranty is given that the information contained on this map is free from error or omission. Any reliance placed on such information shall be at the sole risk of the user. Please verify the accuracy of all information prior to using it. This map is not a design document.