



Transport Access Program

Banksia Station Upgrade

Project Update

December 2020

Transport for NSW is improving accessibility at Banksia Station. The upgrade will provide a station precinct that is accessible to people with a disability or limited mobility, parents/carers with prams, and customers with luggage.

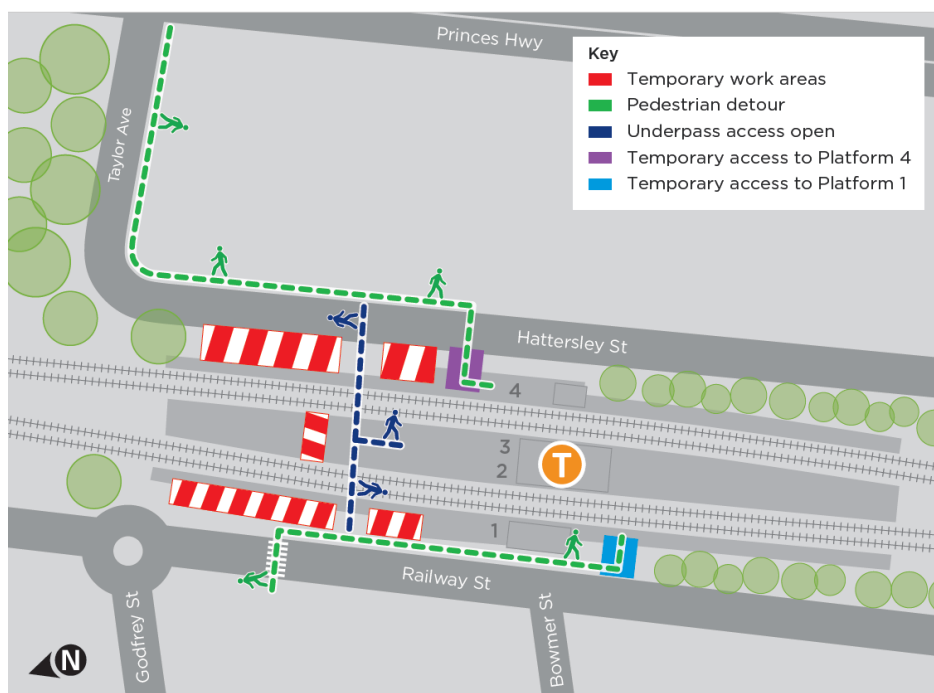
Access to Banksia Station is changing

From **Tuesday 1 December to mid-2021**, the station entries to **platforms 1 and 4** will be temporarily relocated to enable construction work as part of the upgrade. Temporary stair access will be provided to both platforms 1 and 4. Please see map for location and pedestrian detours.

The station underpass will remain open providing access to platforms 2 and 3. A work area will be set up within the underpass, with pedestrian access maintained.

During this time, sections of the Hattersley Street footpath will be closed to provide a laydown area for materials. We apologise for any inconvenience and thank you for your patience while we carry out this important work.

Pedestrian detour map



For more information call 1800 684 490,

Email projects@transport.nsw.gov.au or visit transport.nsw.gov.au/banksia

Upcoming work

Work activities in December include:

- installing temporary fencing and hoarding in the station underpass and on station platforms
- demolition work in the station underpass, subject to approval
- early work to the station buildings, on the station platforms, and to the toilets, subject to approval
- excavation and piling work on Railway Street, Hattersley Street and the underpass for new lift pits
- relocation of Opal Card readers to temporary station entries and in the underpass
- excavation for new stairs on platforms 1 and 4
- electrical work on Hattersley Street including installing a new electrical transformer
- tree trimming to enable the construction of future canopies on platforms 1 and 4
- installing new electrical and drainage services throughout the station premises
- opening new temporary station entries to platforms 1 and 4 (pedestrian detours will be in place)
- temporary relocation of bus stops on Railway Street and Hattersley Street during weekend work (see details below)
- taxi zone on Railway Street will be intermittently unavailable during work near the station entrance.

Equipment to be used includes a city crane, franna crane, excavator, piling rig, tipper trucks, delivery trucks, excavators, vacuum truck, hand tools, ground compaction equipment and concrete trucks.

Traffic control will be in place intermittently to ensure safe pedestrian and vehicle movements around the worksite. Some on street parking in surrounding streets may be temporarily used by trucks for deliveries.

Wherever possible, measures to reduce noise will be in place, this includes turning equipment off when not in use, positioning equipment as far away from residents and businesses as possible, using non-tonal reversing beepers and stopping work for respite periods.

Weekend work in December 2020

For the safety of our workers, pedestrians and motorists, work will take place during two scheduled Sydney Trains trackwork periods in December, when trains are not running.

Work will continuously take place from:

- **5am Saturday 12 December to 12am Monday 14 December**
- **5am Saturday 26 December to 12pm Monday 28 December**, weather permitting.

Activities will include:

- installing power poles on Railway Street and platforms 1 and 4, with partial lane closures on Railway street in place
- starting construction of new stairs
- installing electrical and drainage services
- constructing footings for platform canopies
- removal of building structure on platforms 2 and 3, subject to approval
- electrical work within the underpass
- relocation of overhead wiring structure on platforms 1 and 4

Equipment includes city crane, franna crane, excavator, piling rig, tipper trucks, hi-rail plant, excavators, hi rail dump truck, hi-rail plant, vacuum truck, hand tools, ground compaction equipment and concrete trucks.

The work activities will be noisy at times. We apologise for the inconvenience and will minimise impacts by turning off vehicles and equipment when not in use, monitoring noise levels, using non-tonal reversing beepers and acoustic barriers.

For more information call **1800 684 490**,

Email projects@transport.nsw.gov.au or visit transport.nsw.gov.au/banksia

To allow for work to safely take place over the two weekends, the southbound lane on Railway Street adjacent to the station will be closed and the northbound lane will be partially closed. Traffic control will be in place to maintain vehicle access.

The train replacement bus stops will be relocated. The Hattersley Street bus stop will be relocated to Princes Highway. The Railway Street bus stop and taxi zone will be shifted approximately 20 metres south towards Rockdale.

The station underpass will be temporarily closed during both weekends. Pedestrians will be directed to detour via Subway Road.

Traffic control and signage will be in place to direct pedestrians and motorists during the temporary access changes.

Please visit www.transportnsw.info or call 131 500 for up to date information regarding service updates and replacement buses during this time.

Temporary holiday project closure

From **12pm Monday 28 December 2020** until **7am Monday 4 January 2021** our worksites will be closed to provide the community and workers with a break from construction work.

We wish you and your loved ones a safe and happy holiday season and look forward to working together to deliver the Banksia Station Upgrade throughout 2021.

Construction hours

Standard construction hours are **7am to 6pm Monday to Friday** and **8am to 1pm on Saturdays**.

For the safety of staff, rail customers and the community, some work may be completed outside standard construction hours. Nearby residents and businesses will be notified before any work outside these hours takes place.

Keep in touch

We will continue to keep the community informed with regular project notifications and frequent online updates published to the project website www.transport.nsw.gov.au/banksia.

If you would like to be added to the project distribution list, or for more information about the Banksia Station Upgrade, please contact us on 1800 684 490 or email projects@transport.nsw.gov.au.

For all urgent enquiries or complaints regarding construction activities, please call our 24-hour Construction Response Line on 1800 775 465.



This document contains important information about public transport projects in your area. If you require the services of an interpreter, please contact the Translating and Interpreting Service on **131 450** and ask them to call Transport for NSW on **(02) 9200 0200**. The interpreter will then assist you with translation.

For more information call **1800 684 490**,

Email projects@transport.nsw.gov.au or visit transport.nsw.gov.au/banksia