

Transport Access Program

Como Station Upgrade

Project Update

October 2020

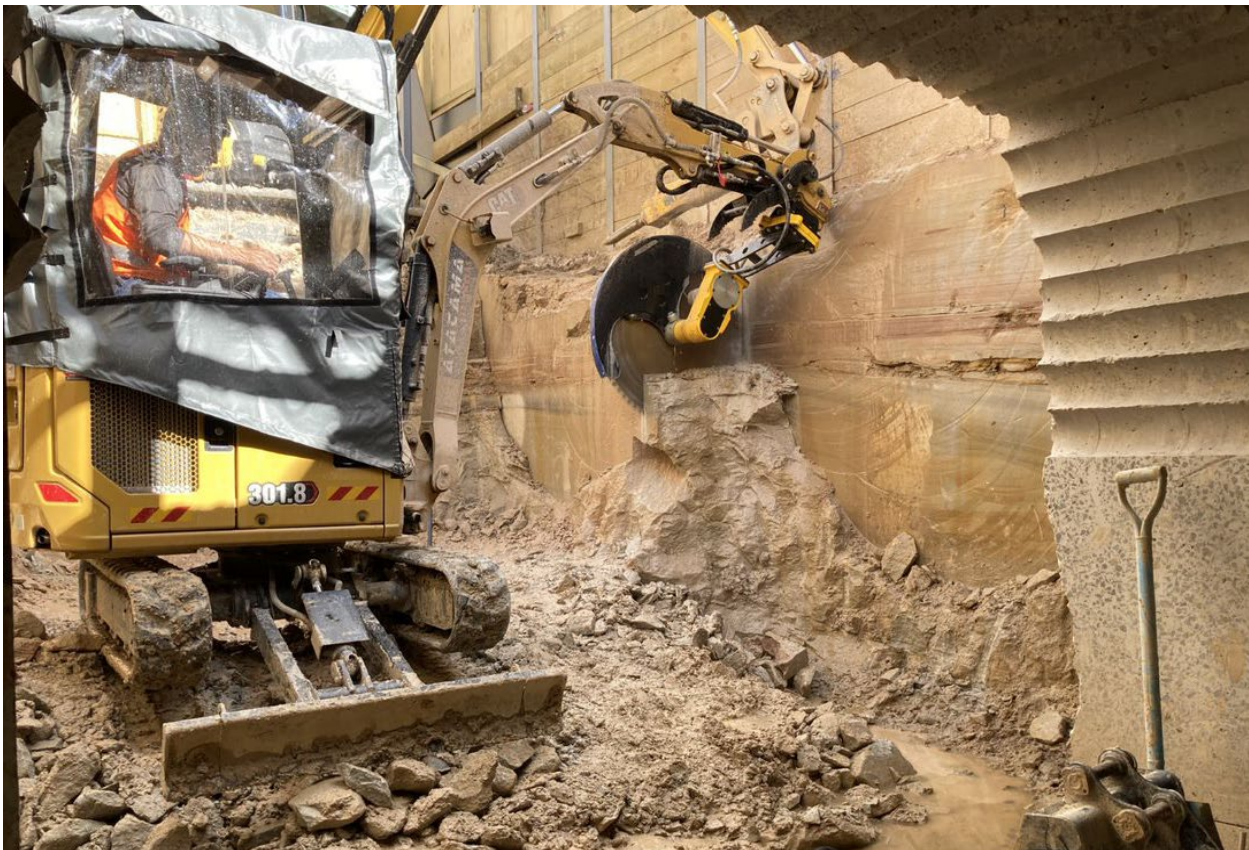


Image: excavation work occurring within the station platform.

Excavation of the platform lift and underpass lobby is progressing well, with around 500 tonnes of material having been excavated and removed. Work on the Railway Rd Ramp and Stairs continues with anchoring of the existing retaining wall complete and demolition of the ramp commenced.

Como Station Upgrade is being delivered as part of the Transport Access Program, a NSW Government initiative to provide a better experience for public transport customers by delivering modern, safe, and accessible infrastructure.

The upgrade will make Como Station accessible for people with a disability, limited mobility, carers or parents with prams and customers with luggage.

Upcoming work

Work will continue in October and includes:

- Continuation of platform excavation work and the removal of rock via the underpass and Railway Road
- Installation of rock anchors to the newly excavated lift shaft
- Demolition and excavation work to enable construction of a new access ramp from Railway Road
- Concrete form work activities for both platform lifts and the new Railway Road access ramp
- Upgrading and re-opening the existing Railway Road access stairs.

This work will include the use of an excavator (rock sawing and jackhammering), bobcats, concrete saws, large trucks, drilling rigs and hand held power tools.

Where possible, we will implement measures to reduce noise associated with this work, including turning off equipment when not in use, monitoring noise, using non-tonal reversing beepers and stopping work for respite periods.

Temporary changes to pedestrian access

Changes to the Railway Road station entrance have been in effect since August 2020, to enable safe and effective material load out during standard construction hours.

To enable further work, including ongoing trenching and the refurbishment of the existing stairs, the closure of the **Railway Road station entrance/exit will be extended until 26 October 2020.**

From Monday 26 October, access via the stairs will be reinstated however the ramp will remain closed until mid-November.

If you require additional assistance due to the above temporary changes, please call 02 9522 1244 to speak with an on-site staff member.

Construction hours

Standard construction hours are **7am to 6pm Monday to Friday** and **8am to 1pm on Saturdays**. For the safety of staff, customers and the community, some work may be completed outside standard construction hours. We will notify nearby residents and businesses in advance if we need to work outside these times.

Keeping the community involved

We will continue to keep the community informed with regular project updates. Further information is available on the project website www.transport.nsw.gov.au/como.

If you would like to be added to the project distribution list, please contact us on **1800 684 490** or email projects@transport.nsw.gov.au.

For all urgent enquiries or complaints regarding construction activities, please call our 24-hour Construction Response Line on **1800 775 465**.



This document contains important information about public transport projects in your area. If you require the services of an interpreter, please contact the Translating and Interpreting Service on **131 450** and ask them to call Transport for NSW on **(02) 9200 0200**. The interpreter will then assist you with translation.

For more information call **1800 684 490**,

Email projects@transport.nsw.gov.au or visit www.transport.nsw.gov.au/projects/como

For urgent enquiries or complaints regarding construction activities, please call 24 hours **1800 775 465**