



Transport Access Program

Banksia Station Upgrade

Out of Hours Work – Railway Street

November 2021

Transport for NSW is improving accessibility at Banksia Station. The upgrade will provide a station precinct that is accessible to people with a disability or limited mobility, parents/carers with prams, and customers with luggage.

Out of Hours Work – Railway Street regrade

For the safety of our workers, pedestrians and motorists, work will take place to regrade the road on Railway Street between Bowmer Street and Godfrey Street.

Work will take place over two nights, from **10pm to 7am on Monday 15 and Tuesday 16 November**, weather permitting.

Activities will include:

- Establishing traffic controls including pedestrian diversions
- Delivering and setting up of road milling equipment
- Removal of asphalt and reinstatement of fresh asphalt from Godfrey Street to Bowmer Street.

Equipment to be used includes a profiler, trucks, a generator, and powered hand tools.

This work will be noisy at times. Wherever possible measures to reduce noise will be implemented, including scheduling noisy work during daytime hours, turning off vehicles and equipment when not in use, monitoring noise, using non-tonal reversing beepers and acoustic barriers.

Pedestrian access changes

The Railway Street bus stop and taxi zone will be shifted approximately 40 metres south towards Rockdale. Traffic control and signage will be in place to direct pedestrians and motorists during the temporary changes. Please follow the directions of traffic controllers and signage, and allow extra travel time

During this period a full road closure will also be in place, with access provided only for local residents and businesses. Please see map overleaf for details.

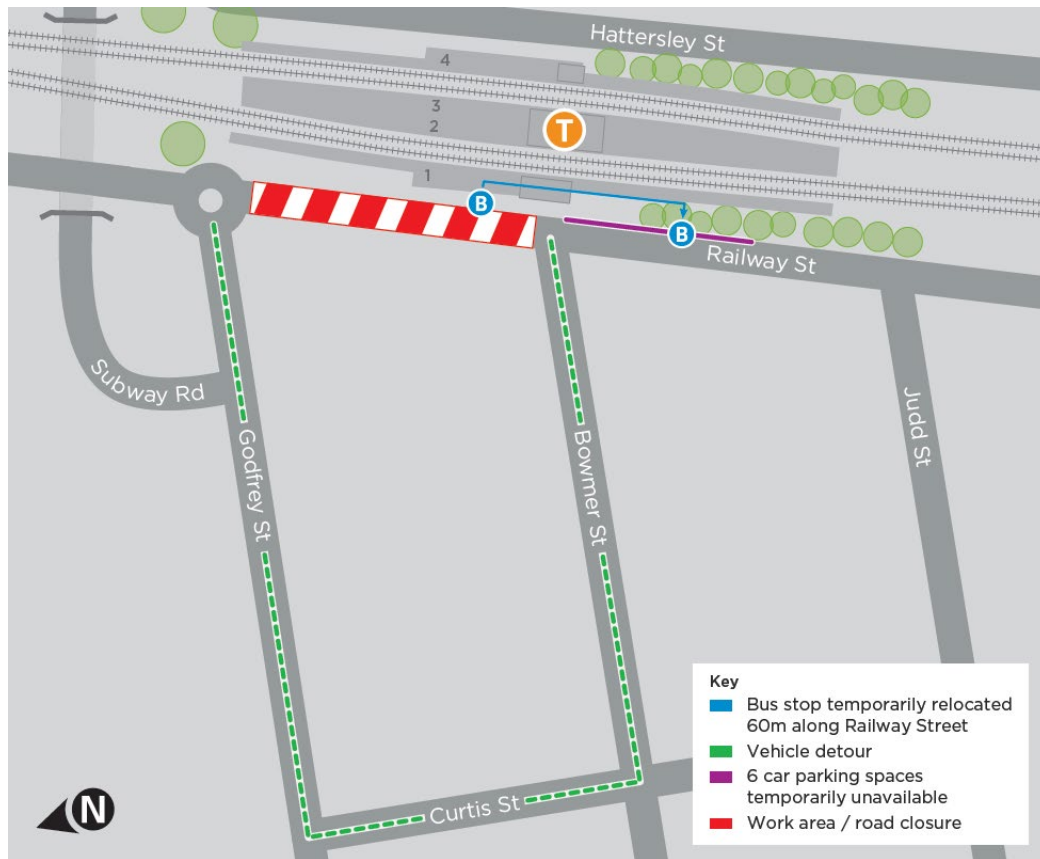


This document contains important information about public transport projects in your area. If you require the services of an interpreter, please contact the Translating and Interpreting Service on **131 450** and ask them to call Transport for NSW on **1800 684 490**. The interpreter will then assist you with translation.

For more information call **1800 684 490**,

Email projects@transport.nsw.gov.au or visit transport.nsw.gov.au/banksia

Roadworks map



Keep in touch

We will continue to keep the community informed with regular project notifications and frequent online updates published to the project website www.transport.nsw.gov.au/banksia Please contact us if you would like to discuss how we can support students studying for HSC exams while work is carried out.

If you would like to be added to the project distribution list, or for more information about the Banksia Station Upgrade, please contact us on **1800 684 490** or email projects@transport.nsw.gov.au For all urgent enquiries or complaints regarding construction activities, please call our 24-hour Construction Response Line on **1800 775 465**.

Macedonian

Овој документ содржи важни информации за проекти од јавниот транспорт во Вашата област. Доколку Ви е потребен толкувач, Ве молиме контактирајте ја Службата за Преводи и Толкување на 131 450 и побарајте да се јават во Транспорт за Нов Јужен Велс на 1800 684 490. Потоа толкувачот ќе ви помогне со преводот.

Arabic

تتضمن هذه الوثيقة معلومات عن مشاريع النقل العام في منطقتكم. إذا كنتم بحاجة إلى خدمات مترجم، الرجاء الاتصال بخدمة الترجمة الشفهية والخطية على رقم 131 450 واطلبوا منهم أن يتصلوا بمصلحة المواصلات في نيو ساوث ويلز على رقم 1800 684 490. عندها يساعدهم المترجم بالترجمة.

Greek

Το παρόν έγγραφο περιέχει σημαντικές πληροφορίες σχετικά με δημόσια έργα μεταφορών στην περιοχή σας. Αν χρειάζεστε τις υπηρεσίες διερμηνέα, παρακαλούμε επικοινωνήστε με την Υπηρεσία Μεταφράσεων και Διερμηνείας στο 131 450 και ζητήστε τους τηλεφωνήσουν στις Συγκοινωνίες στη ΝΝΟ στο 1800 684 490. Ο διερμηνέας θα σας βοηθήσει στη συνέχεια με τη μετάφραση.

Simplified Chinese

这份文件包含你所在地区公共交通工程项目的重要信息。如果你需要传译服务，请致电翻译与传译服务机构，电话 131 450，要求他们为你接通交通部(Transport for NSW)，电话是 1800 684 490。传译员会为你做翻译。

For more information call **1800 684 490**,

Email projects@transport.nsw.gov.au or visit transport.nsw.gov.au/banksia