



# Transport Access Program

## Birrong Station Upgrade

Project Update

February 2021



Transport for NSW is upgrading Birrong Station to make it easier for everyone to access, including people with a disability or limited mobility, parents/carers with prams, and customers with luggage.

## Upcoming work

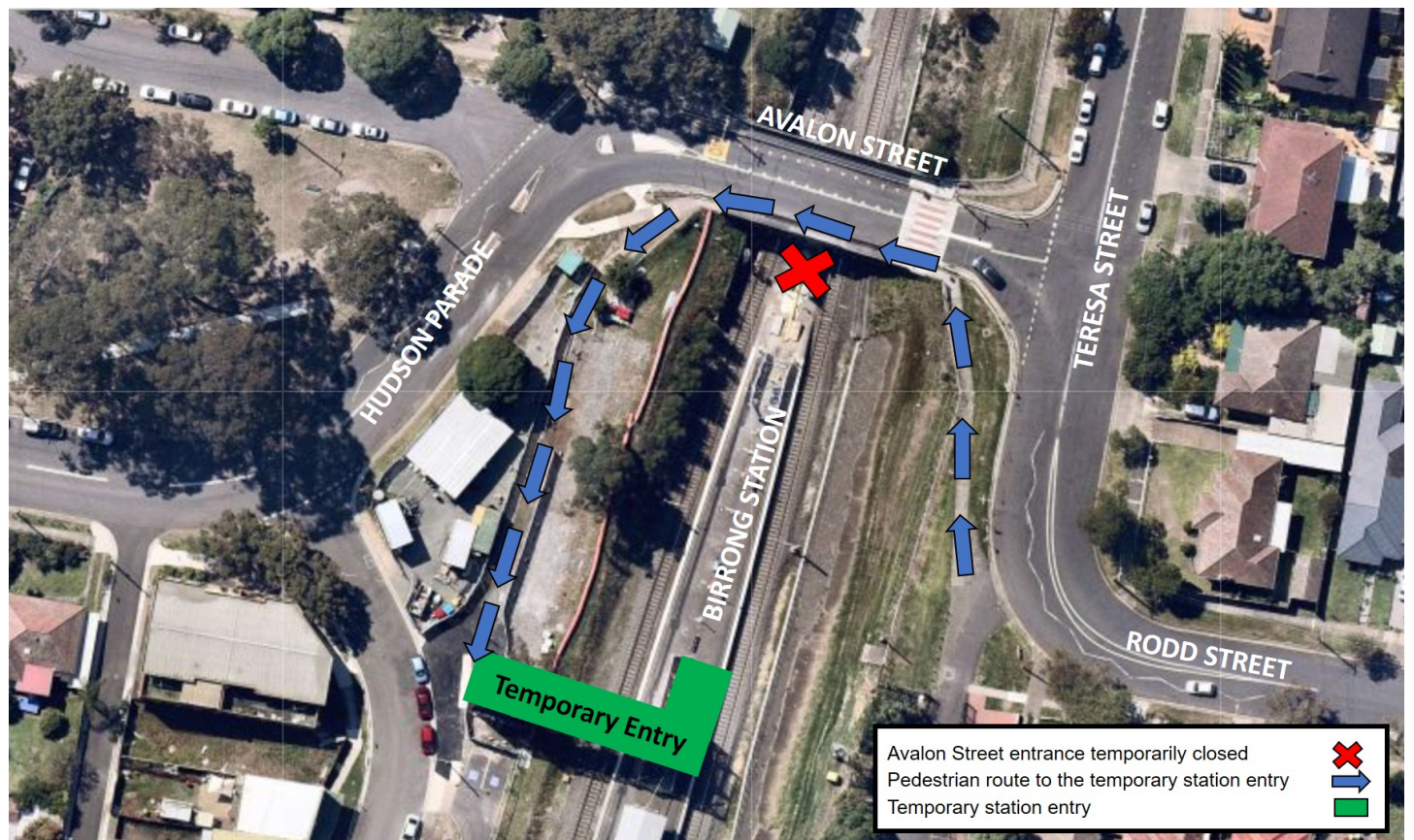
Work will continue in February and includes:

- Electrical work on the station platform and in the rail corridor
- Upgrades to the station building including the toilets
- Deliveries of materials
- Relocation and installation of new services in the platform
- Construction of the new station entry
- Landscaping and installation of bicycle racks and benches on Teresa Street

Equipment to be used includes cranes, lighting towers, handheld tools, concrete pumps and trucks, jackhammers, road saws, excavators with jackhammer attachments and delivery trucks.

Temporary traffic control and pedestrian detours around work areas may be in place intermittently, as required. Please follow the direction of traffic controllers and signage around the project.

## Location map



## Construction hours

Standard construction hours are **7am to 6pm Monday to Friday** and **8am to 1pm on Saturdays**.

For the safety of staff, rail customers and the community, some work may be completed outside standard construction hours. Nearby residents and businesses will be notified before any work outside these hours takes place.

## Keep in touch

We will continue to keep the community informed with regular project notifications and frequent online updates published to the project website [www.transport.nsw.gov.au/birrong](http://www.transport.nsw.gov.au/birrong)

If you would like to be added to the project distribution list, or for more information about the Birrong Station Upgrade, please contact us on **1800 684 490** or email [projects@transport.nsw.gov.au](mailto:projects@transport.nsw.gov.au)

For all urgent enquiries or complaints regarding construction activities, please call our 24-hour Construction Response Line on **1800 775 465**.



## Chinese

这份文件包含你所在地区公共交通工程项目的重要信息。如果你需要传译服务，请致电翻译与传译服务机构，电话 131 450，要求他们为你接通交通部 (Transport for NSW)，电话是 (02) 9200 0200。传译员会为你做翻译。

## Arabic

تتضمن هذه الوثيقة معلومات عن مشاريع النقل العام في منطقتكم . إذا كنتم بحاجة الى خدمات مترجم، الرجاء الإتصال بخدمة الترجمة الشفهية والخطية على رقم 450 131 واطلبوا منهم ان يتصلوا بمصلحة المواصلات في نيو ساوث ويلز على رقم (02) 9200 0200. عندها يساعدكم المترجم بالترجمة .

## Vietnamese

Tài liệu này có các thông tin quan trọng về các dự án giao thông công cộng trong khu vực của quý vị. Nếu quý vị cần sự giúp đỡ của thông dịch viên, xin vui lòng liên hệ với Dịch vụ Thông Phiên Dịch ở số điện thoại 131 450 và yêu cầu họ gọi cho Cơ quan Giao thông Tiểu bang NSW ở số điện thoại (02) 9200 0200. Sau đó thông dịch viên sẽ giúp thông dịch cho quý vị



This document contains important information about public transport projects in your area. If you require the services of an interpreter, please contact the Translating and Interpreting Service on **131 450** and ask them to call Transport for NSW on **(02) 9200 0200**. The interpreter will then assist you with translation.