

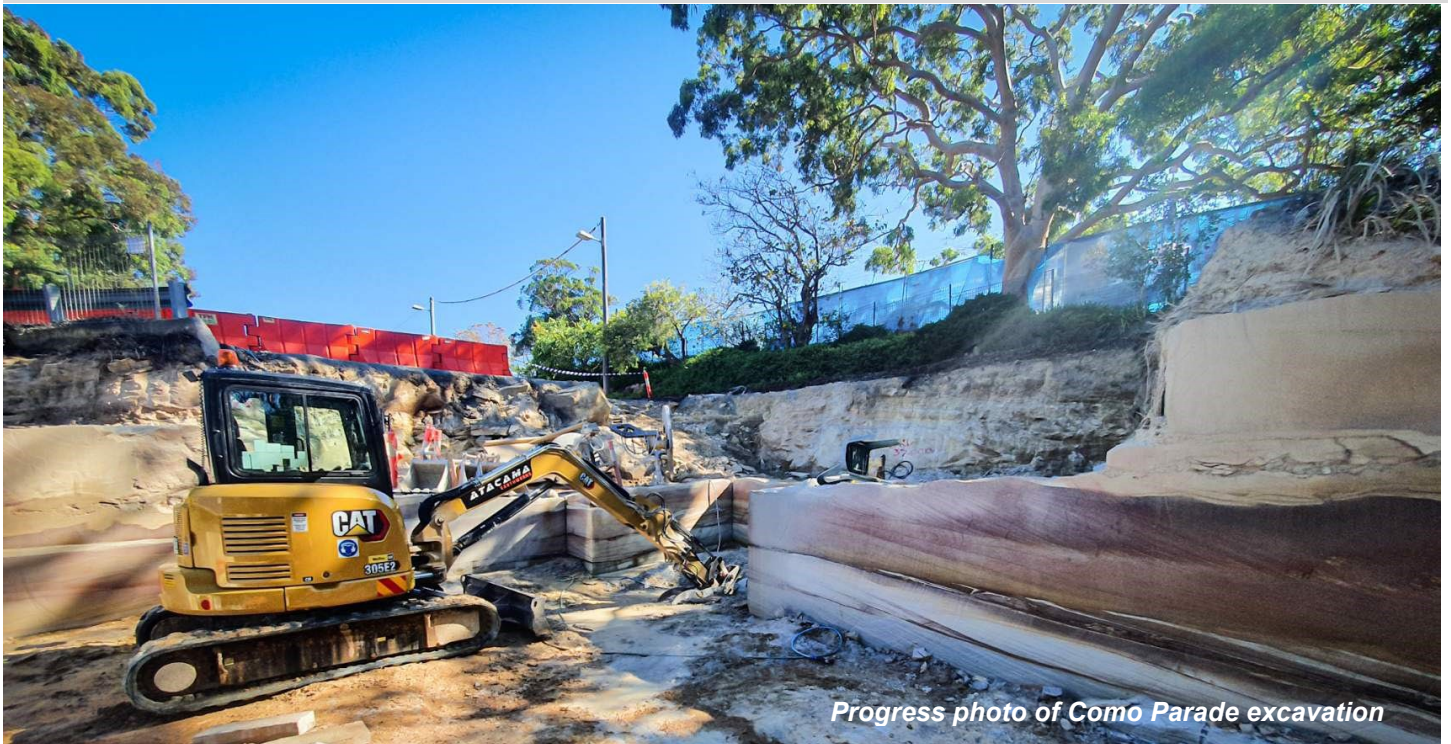


Transport Access Program

Como Station Upgrade

Project update

February 2021



Transport for NSW is upgrading Como Station to make it easier for everyone to access, including people with a disability or limited mobility, parents/carers with prams, and customers with luggage.

Upcoming work

Construction of the Como Station upgrade project is currently underway. Work will continue throughout February and include:

- formalising the kiss and ride zone and installation of a kerb ramp on Railway Road
- concreting and installation of drainage and electrical services to the underpass
- station amenity upgrades
- excavation and concrete work for the new lift on Como Parade
- rock bolt installations on Como Parade
- platform lift painting work.

Equipment to be used includes excavators, hammer drills, bobcats, hand held saws and power tools.

For more information call **1800 684 490**,

Email projects@transport.nsw.gov.au or visit www.transport.nsw.gov.au/como

For urgent enquiries or complaints regarding construction activities, please call 24 hours **1800 775 465**

Weekend work – 20 to 22 February 2021

Weekend work will take place in the station precinct and within the rail corridor from **4am Saturday 20 February to 12am Monday 22 February 2021**. For the safety of customers, workers and the community, work will be carried out during a scheduled Sydney Trains track work period when trains are not running.

Work will include:

- Fencing and balustrade installation on Railway Road
- Electrical cabling installation under the rail line
- Asphalt resurfacing on the station platform
- Excavation and installation of formwork on Como Parade
- Underpass paving.

Equipment to be used includes excavators, dump trucks, bobcats, rollers and hand tools.

This work will be noisy at times. Wherever possible measures to reduce noise will be implemented including scheduling noisy work during daytime hours, turning off vehicles and equipment when not in use, monitoring noise, using non-tonal reversing beepers and acoustic barriers.

We apologise for the inconvenience and thank you for your patience during this important work. Please visit www.transportnsw.info or call 131 500 for up to date information regarding service updates and replacement buses during this time.

Platform changes from Monday 22 February

As part of the station upgrade, new tactile ground surface indicators that assist customers with vision impairment will be installed along the edge of the platform.

The existing indicators will be temporarily removed during weekend work on 21 February to allow new asphalt to be laid. Once this is complete, the surface will need time to cure prior to the new tactiles are installed. Installation of the new tactiles will commence from Monday 1 March.

Work areas will be marked using bollards and tape and supervised at all times. Work will pause while customers board and alight the trains.

During this period, non-slip hazard tape and directional signage will be temporarily installed and regular station announcements will be made to ensure the safety of customers.

Temporary changes to commuter car parking

Up to 20 parking spaces are temporarily closed in the commuter car park until July 2021. This will be in the northern end of the car park where work for the new lift is underway.

Whenever possible, parking spaces will be reopened and made available for customer use during these times. These temporary closures are essential to enable safe excavation and material removal for the new lift. Changes to the commuter car park are expected to occur for up to three months and parking will be reinstated gradually as construction progresses. Traffic control will be in place for the safety of motorists and pedestrians, as required.



Changes to pedestrian access

The Como Parade access ramp has been temporarily closed from 30 November 2020 and is expected to reopen in March 2021.

This closure is to allow for the safe construction of the new lift on Como Parade.

Access to Como Station will be maintained via the Railway Road entrance only.

Map: Yellow markers show car parking spaces that will be intermittently unavailable, green markers show pedestrian access around the station.

Temporary changes to the station toilets

In **late January 2021** work began to refurbish the existing toilets. When complete, the station will feature new male and female ambulant toilets and a new family accessible toilet. This work is expected to take approximately three months to complete.

To enable this upgrade, **one toilet within the station amenities building will be temporarily closed until April 2021**. The remaining toilet will be operating as a unisex toilet during this time. Signage has been installed to help customers with these temporary changes.

Keep in touch

We will continue to keep the community informed with regular project updates. Further information is available on the project website www.transport.nsw.gov.au/como. If you would like to be added to the project distribution list, please contact us on **1800 684 490** or email projects@transport.nsw.gov.au

For all urgent enquiries or complaints regarding construction activities, please call our 24-hour Construction Response Line on **1800 775 465**.



This document contains important information about public transport projects in your area. If you require the services of an interpreter, please contact the Translating and Interpreting Service on **131 450** and ask them to call Transport for NSW on **1800 684 490**. The interpreter will then assist you with translation.