



# Power Supply Upgrade

## AC Feeder Upgrade Project – Regents Park

Community Notification

December 2021

### Project overview

The AC Feeder Upgrade Project is part of the Power Supply Upgrade which is designed to meet expected power requirements for Sydney's future rail network and new fleet of air-conditioned trains. The work involves upgrades to substations, section huts, overhead wiring and feeders as well as the construction of new infrastructure across the network.

### Upcoming work

From **Tuesday 14 December 2021**, Transport for NSW, will utilise its property at **15, Carlingford Street, Regents Park** for establishing a Project Office for the AC Feeder Upgrade Project. See map of the work area on the next page.

The area will be used by the AC Feeder Upgrade Project delivery team until 25 March 2023.

During December 2021, site establishment work in this area will occur including, but not limited to:

- cleaning and adjusting existing facilities
- trimming overgrown vegetation
- modifying access gates
- connecting services and utilities
- delivery and removal of machinery, equipment and materials.

Once operational, the site will be used for activities associated with the construction of the project including a site office and laydown of materials.

### Operating hours

Work hours will be between 7am and 6pm Monday to Sunday until 31 March 2022. After this time the area will be used between 7am and 6pm weekdays and between 8am and 1pm on Saturdays for the duration of the works. During Sydney Trains track work periods and during the project's night work construction activities, the site office will be used outside of these operating hours.

### What you may notice

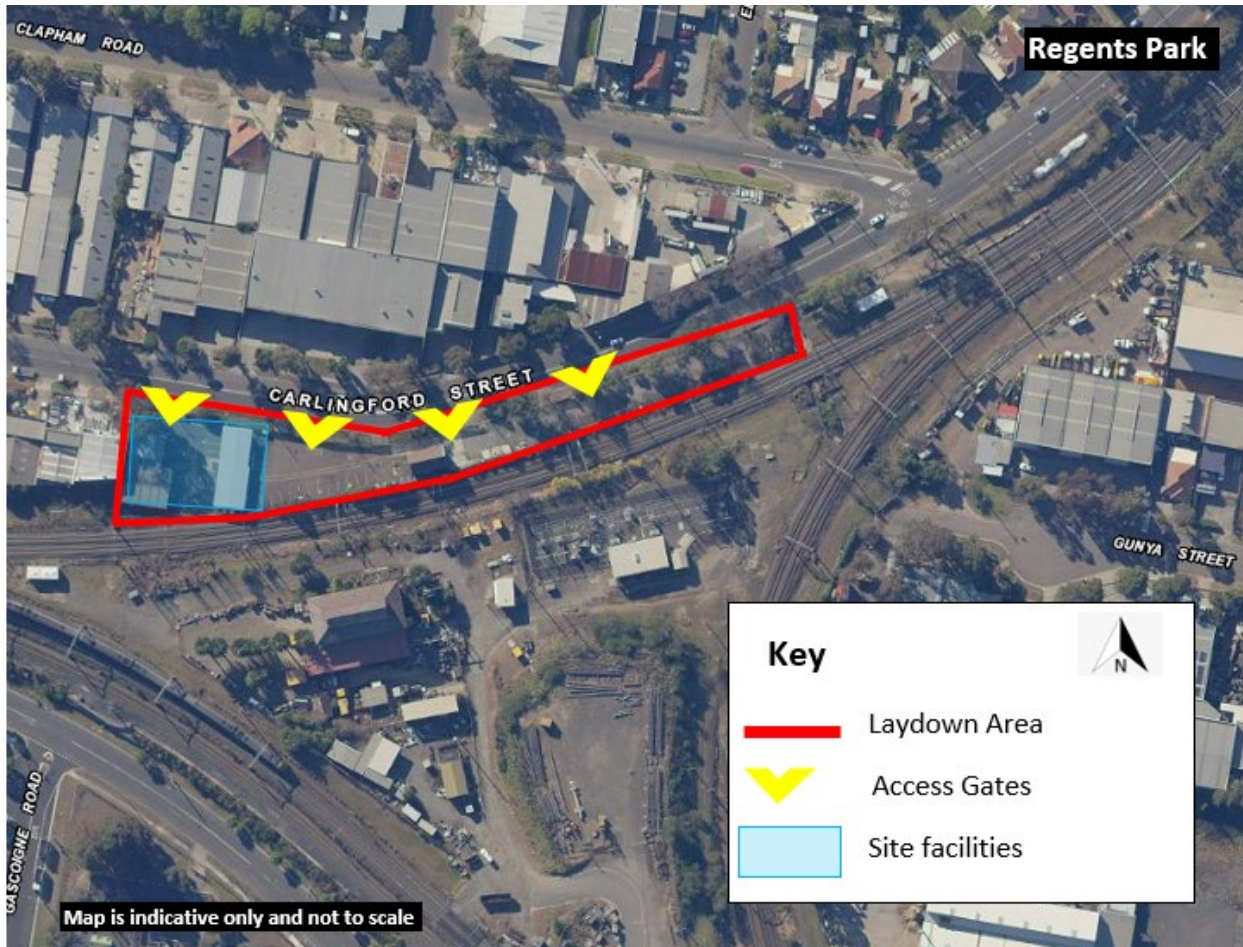
Equipment to be used for this work includes a mobile crane, forklift, delivery trucks, other light construction vehicles, and handheld power tools.

Transport for NSW is committed to minimising impact on the community. We switch off equipment when it is not being used, place equipment as far away from properties as possible and monitor our work activities to make sure noise levels are being managed effectively.

## Keeping the community informed

If you would like to speak with the project team about this work, please contact TfNSW through the details provided below. Thank you for your patience and understanding during this work.

## Map of work area



This document contains important information about public transport projects in your area. If you require the services of an interpreter, please contact the Translating and Interpreting Service on **131 450** and ask them to call Transport for NSW on **1800 684 490**. The interpreter will then assist you with translation.

For more information call **1800 684 490**,  
Email [projects@transport.nsw.gov.au](mailto:projects@transport.nsw.gov.au) or visit [transport.nsw.gov.au/projects](http://transport.nsw.gov.au/projects)  
For urgent enquiries or complaints regarding construction activities, please call 24 hours **1800 775 465**