



Power Supply Upgrade

AC Feeder Upgrade Project – Birrong

Community Notification

November 2021

Project overview

The AC Feeder Upgrade Project is part of the Power Supply Upgrade which is designed to meet expected power requirements for Sydney's future rail network and new fleet of air-conditioned trains. The work involves upgrades to substations, section huts, overhead wiring and feeders as well as the construction of new infrastructure across the network.

Upcoming work

From **8 November 2021**, the AC Feeder Upgrade Project will start utilising a **laydown and facilities area within the rail corridor with access via Teresa Street, Birrong**. The existing facility, adjacent to Birrong Girls High School, will be expanded to include a “bunded” area for temporary stockpiling and containment of wet materials. A map of the location is shown on the next page.

The area will be used by the AC Feeder Upgrade Project for the duration of the project, scheduled to be completed in late 2022.

During November work in this area will include:

- Surveying and setting out the bunded area
- Extending temporary fencing or demarcation around the bunded area
- Excavating and constructing the bunded area

Once operational, the site will be utilised to receive and store wet materials. Access to the site will **remain via gates on Teresa Street, Birrong**, with vehicles using both Teresa Street and Marmion Street to access the gates.

Operating hours

The area will be used between 7am and 6pm weekdays and 8am and 1pm on Saturdays.

What you may notice

You will notice an excavator, construction and other light vehicles, and handheld power tools being used during the expansion of the laydown and bunded area.

Once the expanded laydown and bunded area is operational, you will see vacuum trucks and other construction vehicles in operation for stockpiling/removing material.

Transport for NSW is committed to minimising any noise impact on the community. We switch off equipment when it is not being used, place equipment as far away from properties as possible and monitor our work activities to make sure noise levels are being managed effectively.

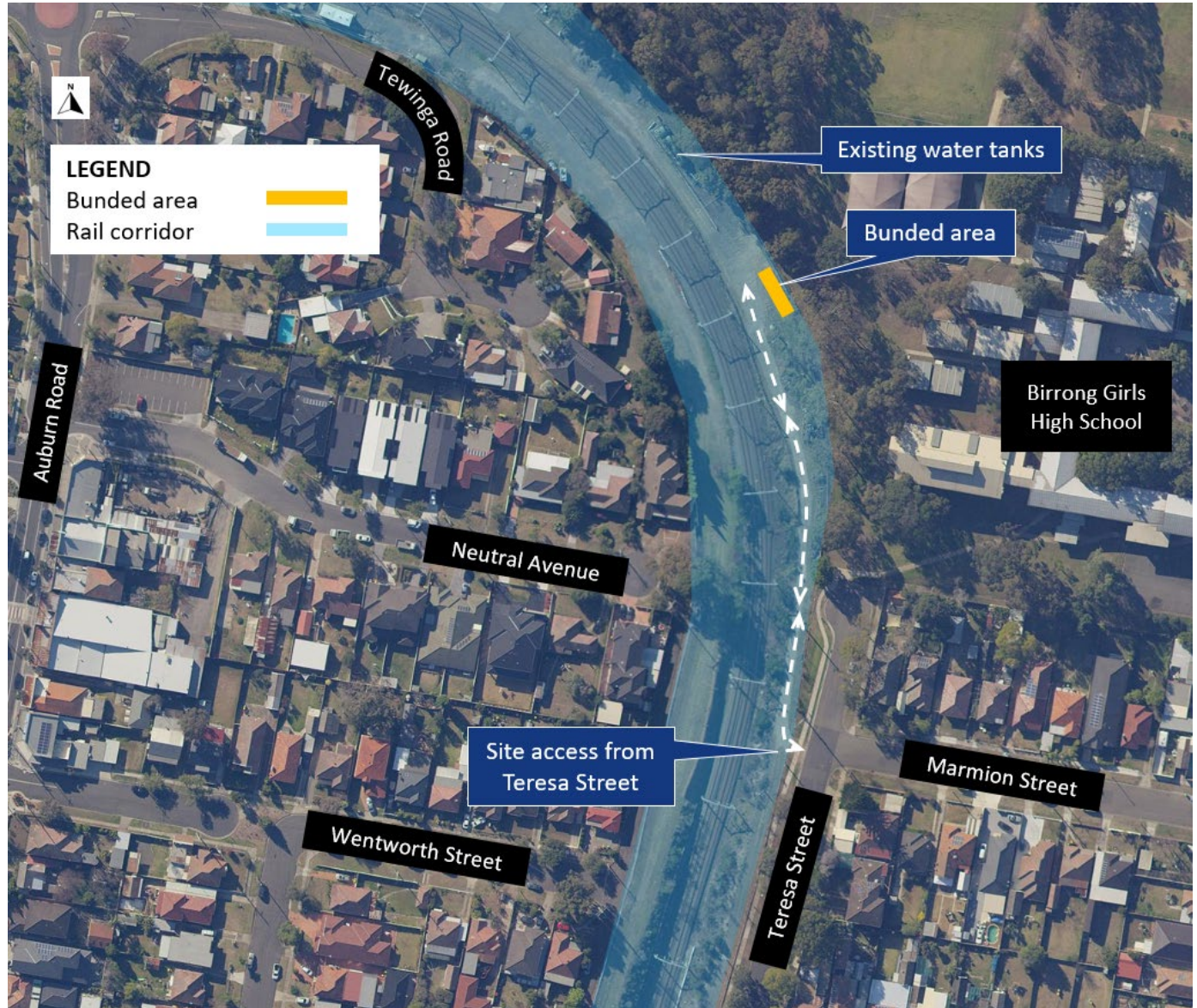
We apologise in advance for any inconvenience this work may cause.

Keeping the community informed

If you would like to speak with the project team about this work, please contact us through the details provided below. Thank you for your patience and understanding during this work.

Map of the work area

Birrong



This document contains important information about public transport projects in your area. If you require the services of an interpreter, please contact the Translating and Interpreting Service on **131 450** and ask them to call Transport for NSW on **1800 684 490**. The interpreter will then assist you with translation.

For more information call **1800 684 490**,
Email projects@transport.nsw.gov.au or visit transport.nsw.gov.au/projects
For urgent enquiries or complaints regarding construction activities, please call 24 hours **1800 775 465**