



# Power Supply Upgrade

## AC Feeder Upgrade Project – Yagoona

Community Notification

December 2021

### Project overview

The AC Feeder Upgrade Project is part of the Power Supply Upgrade which is designed to meet expected power requirements for Sydney's future rail network and new fleet of air-conditioned trains. The work involves upgrades to substations, section huts, overhead wiring and feeders as well as the construction of new infrastructure across the network.

### Upcoming work

The AC Feeder Upgrade Project team will be installing new power poles in the rail corridor near Yagoona Station. See maps of work areas on the next page.

Before the new power poles can be installed, service investigation work will be carried out and suitable holes will be pre-drilled. This work includes:

- Delivering plant and materials to each work area
- Setting up safety barriers
- Identifying utility services using a vacuum truck
- Using an auger to pre-drill holes for new poles.

The holes will then be temporarily backfilled until the new poles are installed at a later time.

We will be working at these locations from **7am to 6pm on Saturday 18 December and Sunday 19 December 2021.**

**No power outage will be required to carry out the work during this weekend at these locations.**

Work to upgrade and replace the poles will start in early 2022 and will be detailed in further notifications.

### What you may notice

Transport for NSW is committed to minimising impact on the community.

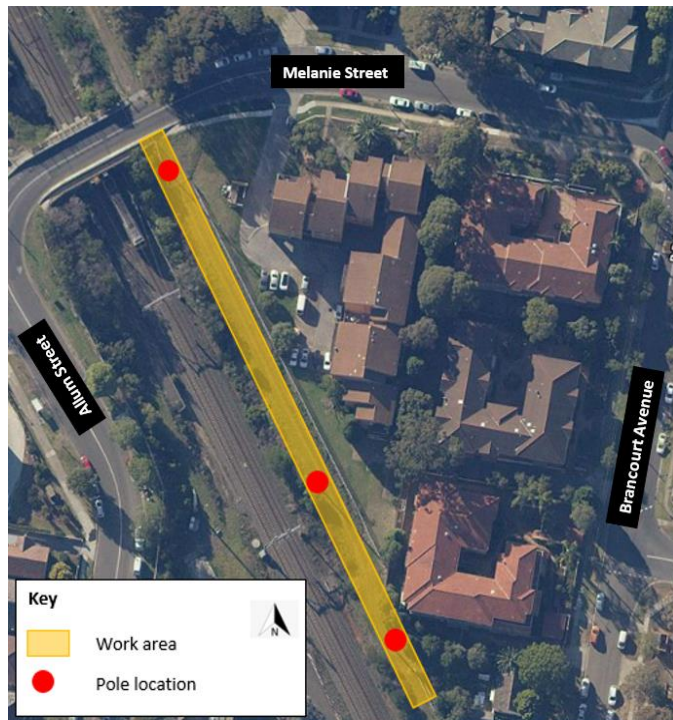
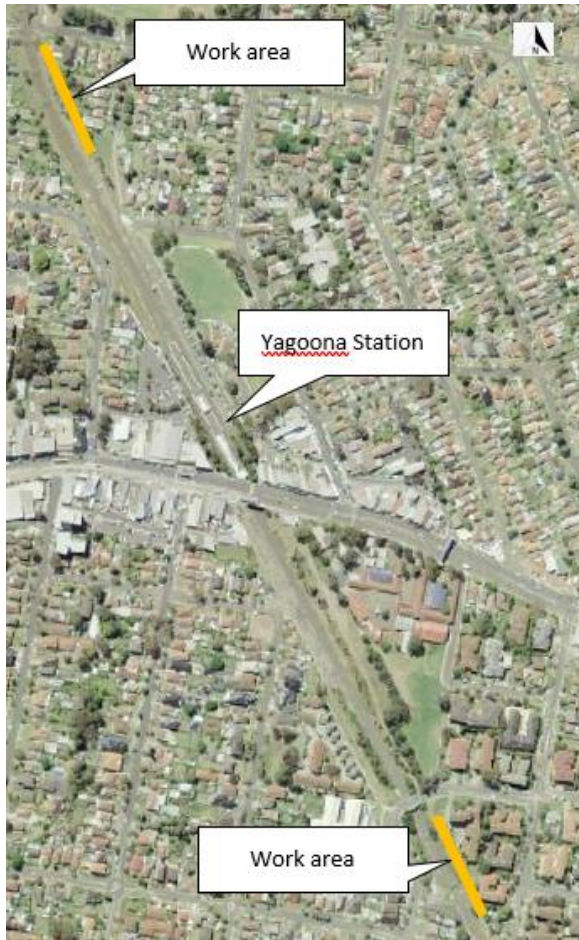
We switch off equipment when it is not being used, place equipment as far away from properties as possible and monitor our work activities to make sure noise levels are being managed effectively. Higher noise generating work is only expected to occur for short periods.

We apologise in advance for any inconvenience this work may cause.

### Keeping the community informed

If you would like to speak with the project team about this work, please contact TfNSW through the details provided below. Thank you for your patience and understanding during this work.

## Maps of work areas



This document contains important information about public transport projects in your area. If you require the services of an interpreter, please contact the Translating and Interpreting Service on **131 450** and ask them to call Transport for NSW on **1800 684 490**. The interpreter will then assist you with translation.

For more information call **1800 684 490**,  
Email [projects@transport.nsw.gov.au](mailto:projects@transport.nsw.gov.au) or visit [transport.nsw.gov.au/projects](http://transport.nsw.gov.au/projects)  
For urgent enquiries or complaints regarding construction activities, please call 24 hours **1800 775 465**