

Appendix [D]

Non-Aboriginal Heritage Assessment

Aboriginal Places

Item Name	Address	Local Government Area	SHR ID	Heritage Item ID	Record Owner
No results in layer					

State Heritage Register

Item Name	Address	Local Government Area	SHR ID	Heritage Item ID	Record Owner
No results in layer					

Interim Heritage Order

Item Name	Address	Local Government Area	SHR ID	Heritage Item ID	Record Owner
No results in layer					

Local Environment Plan

Item Name	Address	Local Government Area	SHR ID	Heritage Item ID	Record Owner
Kyogle Local Environmental Plan 2012		KYOGLE	I108	1890108	
Kyogle Local Environmental Plan 2012		KYOGLE	I106	1890106	
Kyogle Local Environmental Plan 2012		KYOGLE	I099	1890099	
Kyogle Local Environmental Plan 2012		KYOGLE	I109	1890109	
Kyogle Local Environmental Plan 2012		KYOGLE	I178	1890178	
Kyogle Local Environmental Plan 2012		KYOGLE	I112	1890112	
Kyogle Local Environmental Plan 2012		KYOGLE	I115	1890115	
Kyogle Local Environmental Plan 2012		KYOGLE	I109	1890109	
Kyogle Local Environmental Plan 2012		KYOGLE	I107	1890107	
Kyogle Local Environmental Plan 2012		KYOGLE	I106	1890106	
Kyogle Local Environmental Plan 2012		KYOGLE	I100	1890100	

Kyogle Local Environmental Plan 2012	KYOGLE	I105	1890105
Kyogle Local Environmental Plan 2012	KYOGLE	I102	1890102
Kyogle Local Environmental Plan 2012	KYOGLE	I111	1890110
Kyogle Local Environmental Plan 2012	KYOGLE	I103	1890103
Kyogle Local Environmental Plan 2012	KYOGLE	I113	1890113
Kyogle Local Environmental Plan 2012	KYOGLE	I114	1890114
Kyogle Local Environmental Plan 2012	KYOGLE	I380	1890380
Kyogle Local Environmental Plan 2012	KYOGLE	I101	1890101
Kyogle Local Environmental Plan 2012	KYOGLE	I104	1890104
Kyogle Local Environmental Plan 2012	KYOGLE	I106	1890106
Kyogle Local Environmental Plan 2012	KYOGLE	I378	1890378
Kyogle Local Environmental Plan 2012	KYOGLE	I098	1890098
Kyogle Local Environmental Plan 2012	KYOGLE	I381	1890381

Heritage Search Result

Date: 18-Jul-2022

Appendix [E]

Noise Estimation Assessment



Distanced Based Assessment (Construction Scenario)

Steps for Screening Assessment:

- Schedule noisy works to occur in standard hours where possible or before 11pm, and implement Standard Measures.
 - Select the representative noise area category. The worksheet titled 'Representative Noise Emission' provides a number of examples to help select the noise area category.
 - Select the scenario. If not found in drop-down list, refer to 'Source List' and select a representative scenario with similar plant combination.
 - Is there line of sight to receiver? Select the appropriate scenario from the drop-down list.
- Identify and implement standard mitigation measures where feasible and reasonable. Include any shielding implemented as part of the standard mitigation measures by changing the selection in this 'Is there line of sight to receiver' drop-down list. Solid barriers can be in the form of road cutting, solid construction hoarding, acoustic curtain, timber lapped and capped fence, shipping container, site office, etc. Please note that vegetation and trees are not considered to be a form of solid barrier and any gaps would compromise the acoustic integrity of the solid barrier.
- Determine if there are any receivers (both residential and non-residential receivers) within the affected distance for each relevant time period. Consider background noise measurements to check assumption in Step #2. If:
 - there are many affected receivers and the impact duration at any one receiver is more than 3 weeks;
 - there are a few affected receivers and the impact duration at any one receiver is more than 6 weeks.
 Note that consideration need to be given to the construction staging plan when determining impact duration.
 - Identify if there are any receivers within the additional mitigation measures distances and identify feasible and reasonable measures at each receiver
 - Where night works are involved, identify sleep-disturbance affected distance.
 - Document the outcomes of these steps.
- (Note that suitable noise management levels for other noise-sensitive businesses not identified in the Construction Noise Estimator should be investigated on a project-by-project basis. Please

Abbreviation	Measure
N	Notification
SN	Specific notifications
PC	Phone calls
IB	Individual briefings
RO	Respite office
R1	Respite period 1
R2	Respite period 2
DR	Duration respite
AA	Alternative accommodation
V	Verification

Note that spot check verification of noise levels and individual briefings are not required for projects with less than 3 weeks impact duration

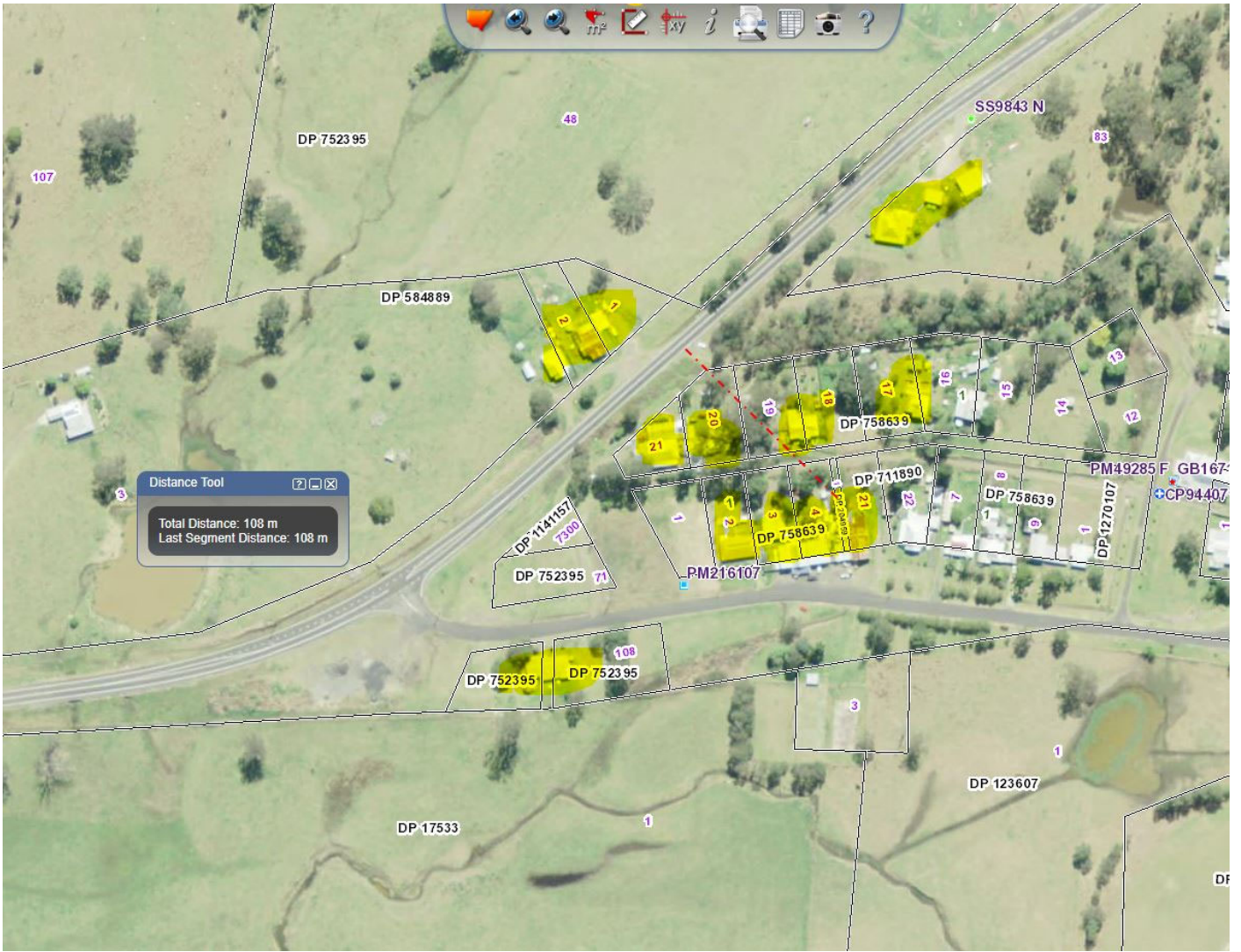
Please pick from drop-down list or orange cells

Noise area category	R1
RBL or Loss	40
Background level (dB(A))	35
Day	30
Evening	50
Night	45
Day (DOHW)	40
Evening	55
Night	35
Scenario	Paving / asphaltting
Is there line of sight to receivers?	Yes

Affected distance (m)	Noticeable		Clearly audible		Moderately intrusive		Highly intrusive		Affected distance (m)	Affected distance (m)
	Measures	Within distance (m)	Measures	Within distance (m)	Measures	Within distance (m)	Measures	Within distance (m)		
Undeveloped green fields:										
Day (DOHW)		230		90		105		30		75
Evening		335		45		155		55		75
Night	N	705	N, R1, DR	455	N, R1, DR	230	AA, N, PC, SN, R2, DR	195	N, PC, RO	270
Isolated dwellings:										
Day (DOHW)		280		60		115		35		75
Evening		435		45		180		55		75
Night	N	935	N, R2, DR	635	N, PC, SN, R2, DR	280	AA, N, PC, SN, R2, DR	115	N, PC, RO	330
Highly Affected		30								
Developed settlements (urban and suburban):										
Day (DOHW)		385		50		140		40		75
Evening		575		45		230		60		75
Night	N	1310	N, R2, DR	880	N, PC, SN, R2, DR	365	AA, N, PC, SN, R2, DR	140	N, PC, RO	440
Highly Affected		20								
Propagation across a valley / over water:										
Day		385		50		140		40		75
Day (DOHW)		575		45		230		60		75
Evening		980		40		365		50		75
Night	N	1310	N, R2, DR	880	N, PC, SN, R2, DR	365	AA, N, PC, SN, R2, DR	140	N, PC, RO	440
Highly Affected		20								

Standard hours	L _{Aeq(15min)} noise level above NML						L _{Aeq(15minute)} 75 dB(A) or greater (Highly affected)		
	Period	NML	Affected distance (m)	Measure	Within distance (m)	Mitigation level (dB(A))	Measure	Within distance (m)	Mitigation level (dB(A))
Classroom at schools and other educational institutions	Day	55	55	N	55	65	N, PC, RO	20	75
Hospital wards and operating theatres	Day	65	55				N, PC, RO	20	75
Place of worship	Day	55	55				N, PC, RO	20	75
Active recreation	Day	65	55				N, PC, RO	20	75
Passive recreation	Day	60	105				N, PC, RO	20	75
Industrial premises	Day	75	20	N	30	70	N, PC, RO	20	75
Offices, retail outlets	Day	70	30				N, PC, RO	20	75





About this release

Reference number	EIA-P05-G01-T05
Title	EIA template: Minor works review of environmental factors
Parent procedure	EIA-P05-2
Prepared by	Specialist (Planning and Assessment) Senior Specialist (Planning and Assessment)
Approved by	Director Environmental Policy, Planning and Assessment
Document location	Objective: Global Folder \ RMS Global Folder \ ENVIRONMENT \ Procedures \ Environment Planning and Assessment Procedures \ Environmental Planning and Assessment Procedures – EIA-P01 Routine and minor works
Document status	Version 4.1 April 2022

Version	Date	Revision description
1.0	05.01.09	First issue
1.1	20.08.09	Amendments to Section 1, Section 1.2 Section 2 and Section 5 – New sign-off for the environmental assessment contractor.
2.0	01/11/11	Table formatting and style amended throughout. Best practice updates. Changes based on legislation amendments.
2.1	13/07/12	Addition of Growth Centres SEPP consultation.
2.2	02/05/13	Update to Clause 228 checklist.
2.3	15/07/13	Update to Commonwealth Minister portfolio
2.4	27/07/15	Included Maritime references and updated hyperlinks
2.5	30/09/15	Update to incorporate requirements of EPBC Act strategic assessment
2.6	11/08/17	Various minor edits. Updated hyperlinks and reference to WaterNSW. Rebranded and made web accessible.
2.7	05/03/18	Update to incorporate legislative updates (EP&A Act, ISEPP, BC Act), agency name changes, RMS delegation title changes
2.8	05/06/18	Updated to incorporate legislative updates (Coastal Management SEPP), edits to Section 3.3 (Noise and vibration), Section 3.7 (Biodiversity) and Section 3.12 (Waste) and various minor edits.
2.9	03/09/18	Marco enabled checkboxes added to replace Word standard checkboxes and minor edits.
3.0	04/10/18	Updated to incorporate legislative updates (ISEPP)
4.0	23/02/22	Rebranded to meet current Transport for NSW Style Guide, updates to EP&A Regulation 2021 (including change from clause 228 to section 171) and addition of acknowledgement of Country.
4.1	4/04/2022	State Environmental Planning Policy updates (consolidated SEPPs 2021).

Printed copies of this document are uncontrolled.