

# AC Feeder Upgrade – Sefton, Birrong and Yagoona

## Power Supply Upgrade

June 2023



Transport for NSW acknowledges the Darug and Eora Nations as the Traditional Custodians of the lands on which we work and pay respects to Elders past and present.

The AC Feeder Upgrade Project is part of the Power Supply Upgrade which is designed to meet expected power requirements for Sydney's future rail network and the new fleet of airconditioned trains. The work involves construction of new electrical infrastructure across the network as well as the upgrades to substations, section huts, overhead wiring and feeders.

### What work are we doing?

Work through June 2023 will include:

- delivering equipment and materials to and from temporary work sites
- trimming and removing vegetation
- identifying existing utility services using a vacuum truck
- drilling holes for new power poles and new earthing rods. Temporary covers and fencing will be placed over and around the holes for public safety until the new power poles are installed.
- installing new power poles and removing some existing poles
- transferring/restringing wires
- restoring locations when our work is finished.

### Equipment to be used

Plant and equipment expected to be used include augers, cranes, elevated work platforms, service vehicles, delivery vehicles, electrical and hand tools.

### When and where we'll be working

Working hours are **7am to 6pm, Monday to Friday, and 8am to 1pm, Saturday**. Work within working hours may occur anywhere along the feeder route shown on the map on the next page.

No out of hours work is planned throughout June but if this changes, we will separately contact impacted properties.

Locations for the work are shown on the map on the next page. Locations will be within the rail corridor.

### What will this mean for you?

Partial lane and road closures may be in place close to the work areas near the rail corridor.

Access to properties and traffic movements may be delayed for short periods of time, typically less than 10 minutes. For your safety, please follow the direction of traffic control personnel.

Transport for NSW is committed to minimising the impact on the community. You may notice an increase in construction vehicle movements within and near the rail corridor work areas.

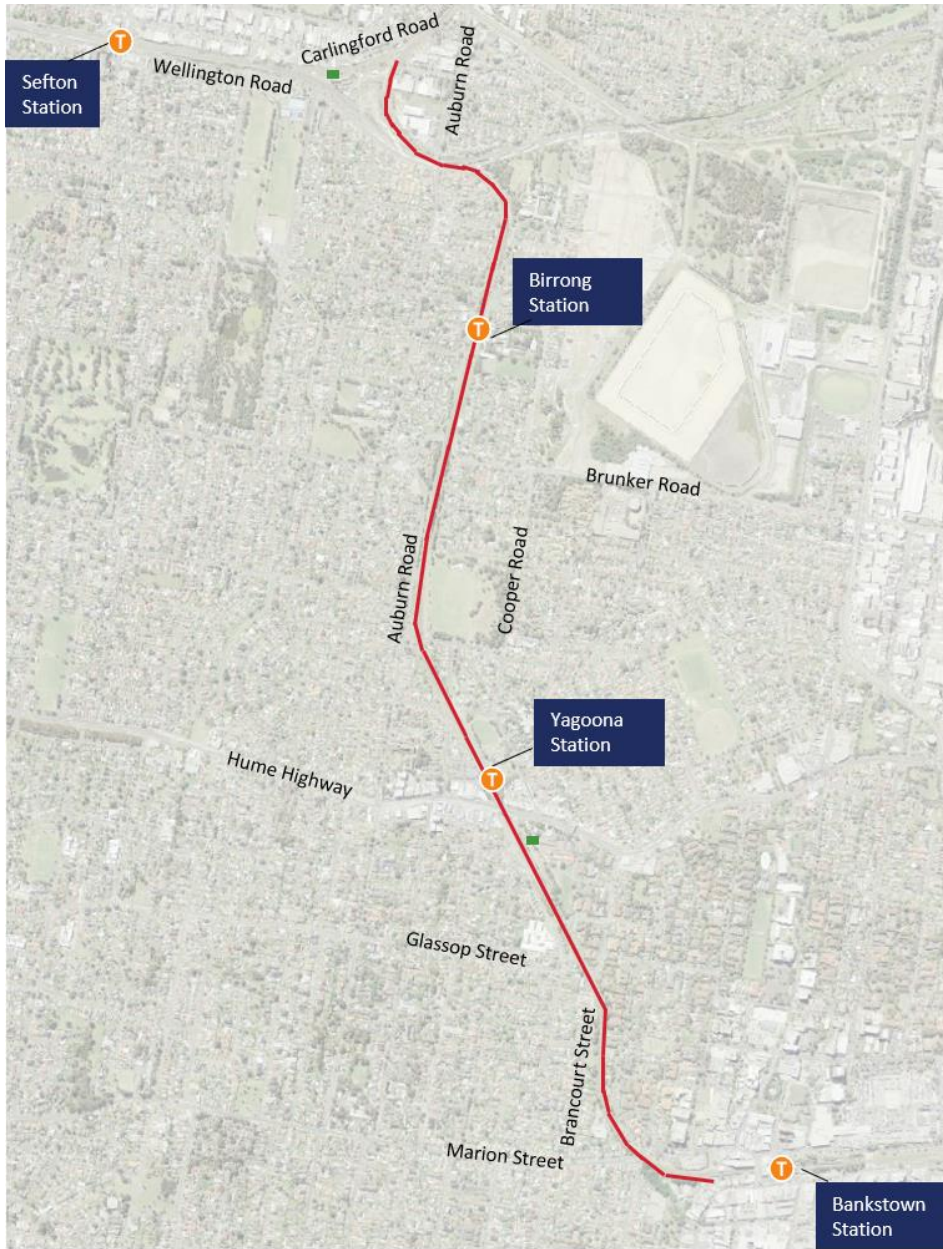
We apologise in advance for any inconvenience this work may cause.

### Managing our impacts

We switch off equipment when it is not being used, place equipment as far away from properties as possible and monitor our work activities to make sure noise levels are being managed effectively. Higher noise-generating work is only expected to occur for short periods.



## Map of work area



**KEY**

- AC Feeder alignment within rail corridor
- Site offices and laydown yards

*Map is indicative only and not to scale*

## Contact us



Project Infoline **1800 684 490**  
24 Hour Construction  
Response Line: **1800 775 465**



[projects@transport.nsw.gov.au](mailto:projects@transport.nsw.gov.au)



[transport.nsw.gov.au](http://transport.nsw.gov.au)



## Interpreter service

For languages other than English call 131 450  
Arabic • Cantonese • Hindi • Mandarin • Vietnamese  
لطلب خدمة الترجمة الشفهية للغات غير الإنجليزية اتصل بالرقم  
**131 450**

獲取英語以外的其他語言傳譯協助服務可以致電**131 450**

अंग्रेज़ी के अतिरिक्त अन्य भाषाओं के लिए दुभाषिया सेवा **131 450**  
पर कॉल करें

获取英语以外的其他语言口译协助服务可以致电**131 450**

Để có dịch vụ thông ngôn cho các ngôn ngữ khác tiếng Anh,  
gọi số **131 450**



Subscribe for updates at [projects@transport.nsw.gov.au](mailto:projects@transport.nsw.gov.au)

[www.transport.nsw.gov.au/privacy-statement#Your\\_Privacy](http://www.transport.nsw.gov.au/privacy-statement#Your_Privacy)