

# AC Feeder Upgrade – Birrong and Yagoona

## Power Supply Upgrade

May 2023



Transport for NSW acknowledges the Darug and Eora Nations as the Traditional Custodians of the lands on which we work and pay respects to Elders past and present.

The AC Feeder Upgrade Project is part of the Power Supply Upgrade which is designed to meet expected power requirements for Sydney's future rail network and the new fleet of airconditioned trains. The work involves upgrades to substations, section huts, overhead wiring, and feeders as well as the construction of new infrastructure across the network.

### What work are we doing?

In our recent community notification about the AC Feeder power supply upgrade work at Sefton, Birrong and Yagoona, we informed you of works taking place in May 2023. This notification is a reminder of upcoming out-of-hours works planned in your area.

Before the weekend and during standard construction hours we will be:

- establishing our temporary work sites
- delivering machinery and materials to temporary work sites
- trimming and removing vegetation
- using an auger (a specialised drill) to pre-drill holes for new power poles, stay poles and new earthing rods. Temporary covers will be placed over the holes and temporary fencing will be placed around the holes for safety until the new power poles are installed.

### Weekend work

Weekend working hours will be **6am to 6pm Saturday 6 May and Sunday 7 May 2023** for construction works and from 6pm Sunday to 2am Monday 8 May for testing and commissioning.

The work locations will be inside the rail corridor at Teresa Street, Birrong and near Melanie Street and Brancourt Avenue, Yagoona. Maps are shown on the next page.

Weekend work will include:

- replacing poles
- restringing conductors (wires)
- restoring locations
- testing and commissioning services.

### What will this mean for you?

Where access to properties will be impacted, residents will be contacted directly. Otherwise, access to properties will be maintained. For your safety, please follow the direction of traffic controllers in attendance.

You may notice construction vehicle movements within and near the rail corridor work areas. There may be some daytime noise. We apologise for any inconvenience this work may cause.

We apologise in advance for any inconvenience this work may cause.

### Equipment to be used

Machinery and equipment expected to be used include cranes, elevated work platforms, service vehicles, delivery vehicles, electrical and hand tools.



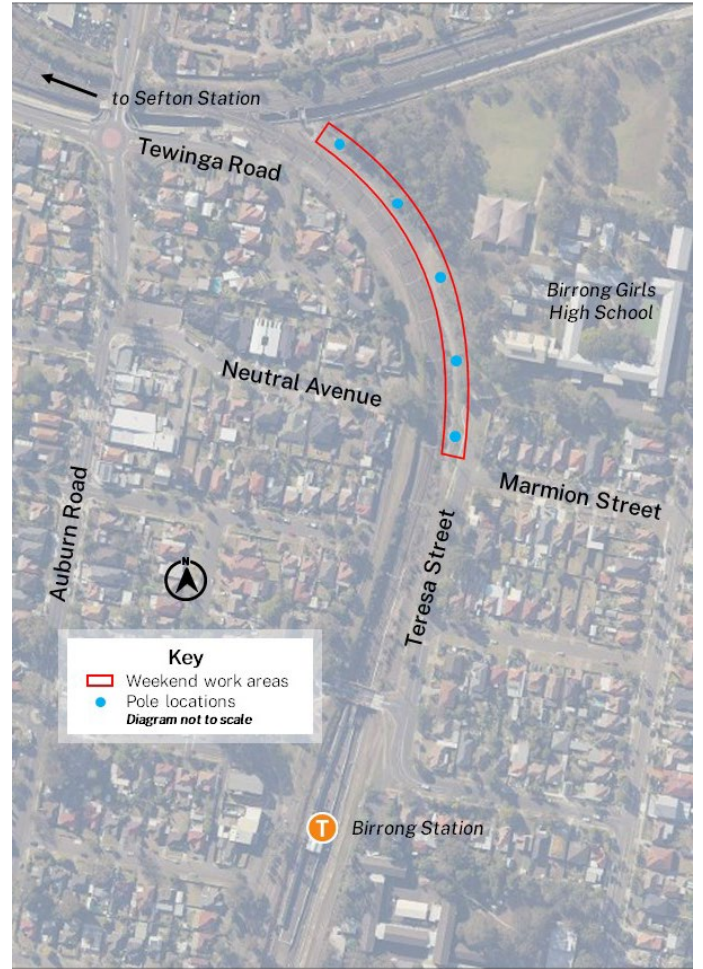
## Managing our impacts

We switch off equipment when it is not being used, place equipment as far away from properties as possible and monitor our work activities to make sure noise levels are being managed effectively. Higher noise-generating work is only expected to occur for short periods.

## Map of work area – Yagoona



## Map of work area – Birrong



## Contact us



Project Infoline **1800 684 490**

24 Hour Construction

Response Line: **1800 775 465**



**projects@transport.nsw.gov.au**



Visit **transport.nsw.gov.au**



### Interpreter service

For languages other than English call 131 450  
Arabic • Cantonese • Hindi • Mandarin • Vietnamese

لطلب خدمة الترجمة الشفهية للغات غير الإنجليزية اتصل بالرقم  
**131 450**

獲取英語以外的其他語言傳譯協助服務可以致電**131 450**

अंग्रेजी के अतिरिक्त अन्य भाषाओं के लिए दुभाषिया सेवा **131 450**  
पर कॉल करें

获取英语以外的其他语言口译协助服务可以致电**131 450**

Để có dịch vụ thông ngôn cho các ngôn ngữ khác tiếng Anh,  
gọi số **131 450**



Subscribe for updates at [projects@transport.nsw.gov.au](mailto:projects@transport.nsw.gov.au)

[www.transport.nsw.gov.au/privacy-statement#Your\\_Privacy](http://www.transport.nsw.gov.au/privacy-statement#Your_Privacy)