

Denistone Station Upgrade

Transport Access Program

May 2023



Transport for NSW acknowledges the Wallumattegal people of the Dharug Nation as the Traditional Custodians of the lands on which we work and pay respects to Elders past and present.

The Transport Access Program will deliver a better experience for Denistone Station customers, with an upgraded station accessible to all.

Track and out-of-hours work reminder

From **2am Saturday 10 June** until **2am Tuesday 13 June 2023**, there will be out-of-hours work during a scheduled Sydney Trains trackwork weekend.

Thank you for your continued patience and for using caution around the areas of work

Gordon Crescent and Kinson Crescent car park

The public carpark at Gordon Crescent and Kinson Crescent will be temporarily closed from **Friday 9 June** until **Thursday 15 June 2023** to store equipment and materials for the trackwork weekend.



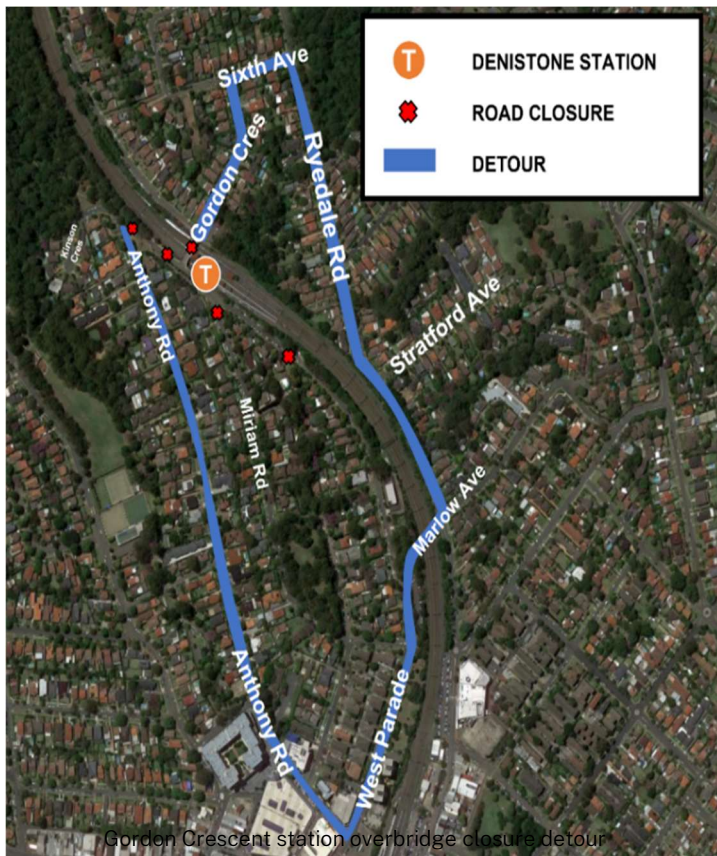
Pedestrian detours and temporarily affected on-street parking.



What will this mean for you?

You may notice:

- workers and vehicles
- traffic controllers and signage
- road closures and reduced speed limits
- footpath closures
- pedestrian and cyclist detours with traffic controllers on site to guide you
- noise from machinery and equipment.



How will the track and out-of-hours work impact me?

During this period:

- a train replacement bus service will be available from East Parade and Gordon Crescent
- the Gordon Crescent station overbridge and parts of West Parade will be closed to vehicles during this time to allow works on station building and entry to occur. Pedestrian thoroughfare will be maintained however please note, you may be asked to wait for short periods of time until it is safe for you to pass the works.
- pedestrian detours will be in place and some on-street parking will be affected at Ryedale Road, West Parade and East Parade. On-street parking will be restored from **5pm, Thursday 15 June 2023** as the equipment is removed from each site.

We understand that our work may be noisy at times. We will do everything to lessen the disturbance, including turning off vehicles and equipment when not in use, using non-tonal reversing beepers and scheduled noisy works during the day where possible. Please follow signage and the direction of traffic controllers.

Contact us



Project Infoline **1800 684 490**
24-hour Construction Response Line
1800 775 465



Projects@transport.nsw.gov.au



transport.nsw.gov.au/Denistone-station-upgrade



Interpreter service

For languages other than English call 131 450
Arabic • Cantonese • Hindi • Mandarin • Vietnamese

لطلب خدمة الترجمة الشفهية للغات غير الإنجليزية اتصل بالرقم
131 450

獲取英語以外的其他語言傳譯協助服務可以致電**131 450**

अंग्रेज़ी के अतिरिक्त अन्य भाषाओं के लिए दुभाषिया सेवा **131 450**
पर कॉल करें

获取英语以外的其他语言口译协助服务可以致电**131 450**

Để có dịch vụ thông ngôn cho các ngôn ngữ khác tiếng Anh,
gọi số **131 450**



Subscribe for updates at projects@transport.nsw.gov.au

www.transport.nsw.gov.au/privacy-statement#Your_Privacy