

More Trains, More Services program

Wollongong Stabling Yard and Platform Extension Project



More Trains, More Services program

Wollongong station and stabling yard is being upgraded to support the introduction of a new fleet of intercity trains, called Mariyung. The Mariyung fleet of longer trains will offer improved safety, accessibility, comfort and modern features for south coast customers.

Upgrades include platform extensions, new signalling and overhead wiring as well as reconfigured rail track and a new train stabling yard.

New security fence to be installed inside the rail corridor

To meet required rail safety and security standards, we will be installing a security fence inside the rail corridor behind the residential properties on the western side of Gladstone Avenue later this month.

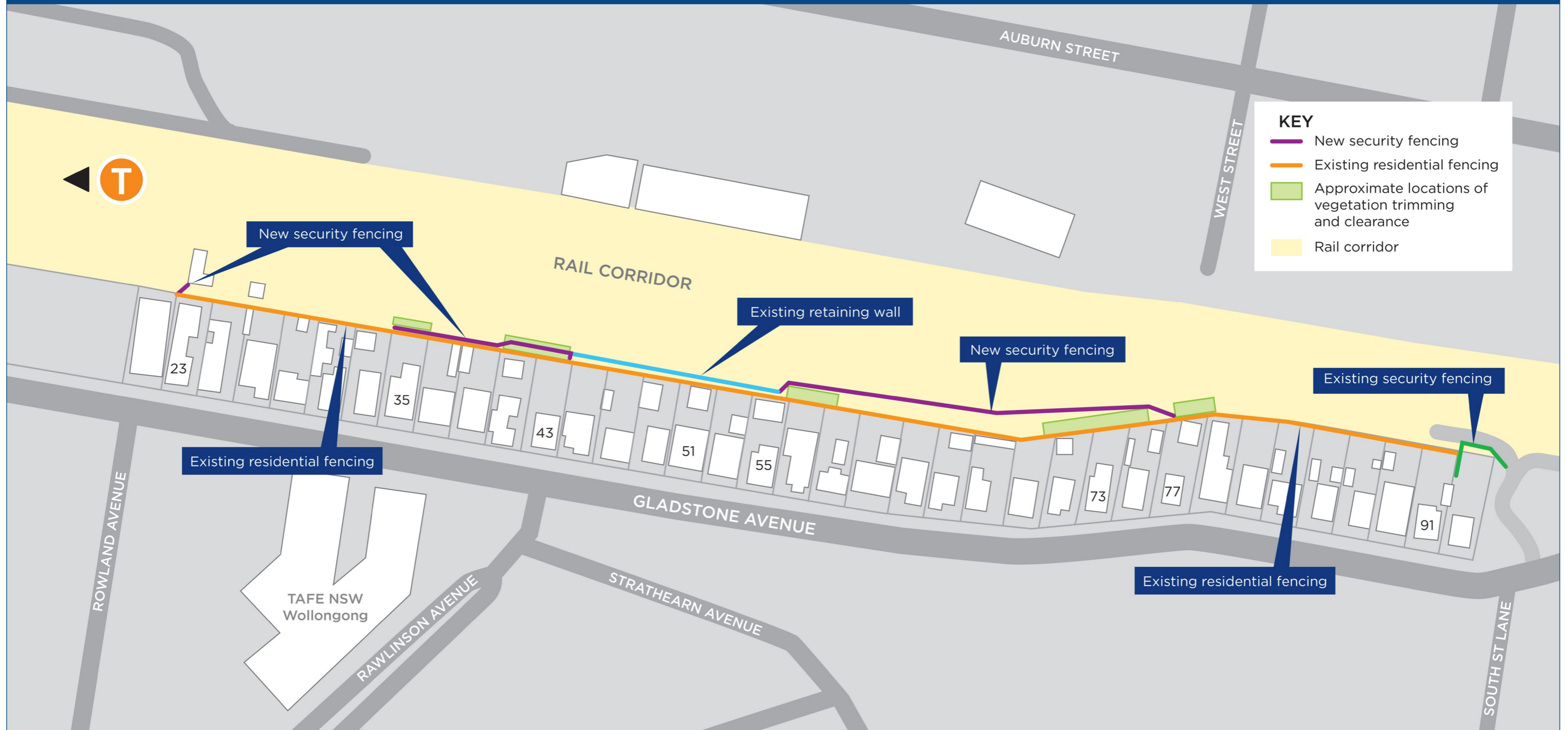
Where will the new fence be located?

The new security fence will be approximately 300 metres in length and installed in three sections parallel to the existing residential boundary fencing, as indicated in the image over page.

- the first section of fencing will be installed behind 23 Gladstone Avenue, and measure approximately 7 metres in length
- the second section of fencing will be installed between 35 and 43 Gladstone Avenue and measure approximately 70 metres in length
- the third section of fencing will be installed between 55 and 77 Gladstone Avenue and measure approximately 180 metres in length.

The fence will be 3 metres in height and positioned between 3 and 10 metres from the existing residential boundary fencing depending on the location as depicted in the image over page.

Wollongong Rail Corridor Security Fencing



What will the fence look like?

The fencing is similar to what has already been installed opposite South Street Lane and is comprised of close space welded mesh made from black steel with a jagged top finish called a croc top.

This fencing is used extensively by Sydney Trains as it provides the necessary safety and security requirements as well as reduces the visual impact of a lighter colour fence or an enclosed fence.



Why is security fencing being installed?

The purpose of rail corridor security fencing is to improve safety and prevent illegal trespassing.

The rail corridor is a high risk location. Restricting access to train lines through the installation of physical barriers reduces trespassing and therefore significantly reduces the risk of injury and fatality.

Transport for NSW is working to install additional safety and security fencing at locations where people can access the rail corridor.

No access to the rail corridor

The installation of security fencing in the rail corridor and stabling yard at Wollongong will restrict all direct residential access to the rail corridor.

Accessing the corridor illegally can result in fines between \$400 and \$5,500.

Will vegetation be impacted?

Some vegetation removal is required inside the rail corridor to enable installation of the new security fence and underground service routes. Locations identified for vegetation removal are indicated in the image printed inside this notification.

An Ecological Assessment has been carried out and no threatened species have been identified. The impacted vegetation consists primarily of as invasive and exotic species and is located entirely inside the rail corridor.

No vegetation inside residential property boundaries will be impacted.

How long will it take to install the fence?

Installation will take approximately two weeks, subject to weather and NSW Government Public Health Orders and Restrictions.

About More Trains, More Services

Over the next 10 years the More Trains, More Services program will simplify and modernise the rail network so that customers can expect more frequent train services, with less wait times, less crowding and more seats on a simpler, more reliable network.



New fence at the Coniston pedestrian subway

Minimising impacts

We understand installing a new fence close to your property boundary may cause disruption. Every effort will be made to minimise impacts where possible including completing the majority of installation activities during standard construction hours (7am–6pm). If required, temporary screening for residents will be utilised during installation.

How are we keeping our sites safe?

We are continuing to deliver projects across New South Wales while ensuring the safety of all staff and the community. All work will be carried out in line with current NSW Government Public Health Orders and Restrictions which are subject to change.

Need more information?

We had planned to visit your property to share this information with you directly and to answer any questions you may have about the security fencing.

Unfortunately due to the current COVID-19 restrictions we are unable to do so.

If you would like more information about the security fencing in relation to your property, please get in touch with our Communications and Engagement Manager, Stevi on **0435 514 844** or email projects@transport.nsw.gov.au

Contact us

For more information or to subscribe for project updates:

 project information line: **1800 684 490**

 24/7 construction response line:
1800 775 465

 projects@transport.nsw.gov.au

 www.transport.nsw.gov.au/mtms



This document contains important information about public transport projects in your area. If you require the services of an interpreter, please contact the Translating and Interpreting Service on **131 450** and ask them to call Transport for NSW on **(02) 9200 0200**. The interpreter will then assist you with translation.