

More Trains, More Services

Wollongong Stabling Yard and Platform Extension Project



What's the latest news?

As we approach the end of 2020, our site teams are continuing to work hard on completing some major construction milestones before taking a **two-week break from Saturday 19 December 2020, returning Monday 4 January 2021**. This past month we have received multiple deliveries of rail components, which will be installed in the corridor as part of the stabling yard upgrade.

We have also been carrying out activities on the eastern side of the station within the Sydney Trains' staff car park. Our work here includes installing pipes and combined service routes underneath the track, to protect and carry utility cabling underground. These routes are associated with the running of train services and this work will enable us to lay new track in the corridor later this month.

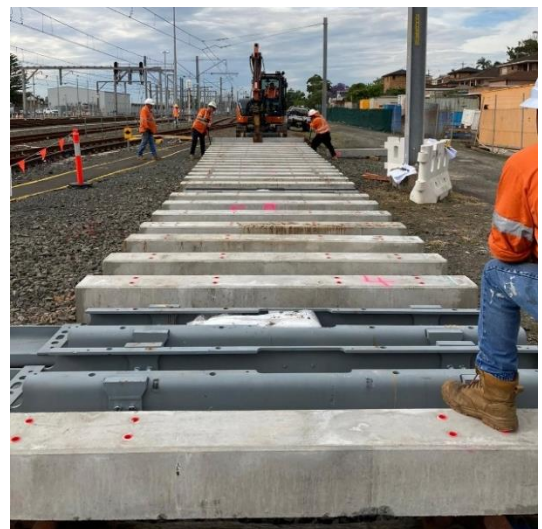
What's coming next?

During December, we will continue working to construct the new rail turnout from the materials delivered on site in November. A rail turnout raises the capacity of the rail system, allowing trains to move from one track to the other without interrupting the journey.

This work will be completed inside the stabling yard before the remainder of track is installed over the second weekend in December.

To support increased capacity at Wollongong Station in the future, this month we will be installing:

- a new overhead wiring structure
- signalling equipment
- cabling.



The construction team pre-building new track segments - November 2020

What you need to know about construction hours

Standard construction hours on this project are 7am to 6pm, Monday to Friday.

From **4am Saturday 12 December until 2am Monday 14 December** we will be working during a scheduled Sydney Trains track work period, while no passenger services are running. Scheduling our night work to coincide with Sydney Trains' track work periods improves the safety of our construction team and minimises disruption to customers.

The project team understands that construction activities may cause disruption for the community and every effort will be made to minimise impacts where possible including turning off machinery when not in use, using non-tonal reversing beepers and undertaking noise monitoring. We will ensure compliance with strict environmental conditions relating to noise, vibration and dust management.

We are conscious of our closest residential neighbours bordering the corridor and will also have Environmental Managers on-site during all night work to monitor and manage noise levels.

In the new year

After the two-week break, upon returning to site, we will continue with track reconfiguration work. Our site team will be based within our mobile site offices inside the Sydney Train's staff car park to the west of the station.

In January, work will include:

- further deliveries of materials to site
- ongoing signalling work
- combined service route activities
- installation of new underground pipes.

More Trains, More Services at Wollongong is expected to take around 18 months to complete and will enable a longer fleet of trains to service Wollongong Station.

Always Was, Always Will Be

Transport for NSW acknowledges the traditional owners and custodians of the land we work on and pays respect to Elders past, present and future. NAIDOC week was in November this year and our project teams have held several events dedicated to promoting a greater understanding of Aboriginal culture. We would like to thank the representatives from the Illawarra Aboriginal Corporation and local community members for meeting with us during NAIDOC week to help us understand how we can better meet the needs of Aboriginal and Torres Strait Islander communities. We look forward to working together and identifying opportunities to represent our First Nations people on this project.

About More Trains, More Services

Over the next ten years the More Trains, More Services program will simplify and modernise the rail network so that customers can expect more frequent train services, with less wait times, less crowding and more seats on a simpler, more reliable network.

Contact us

For more information or to subscribe for project updates:

 project information line: 1800 684 490

 24/7 construction response line: 1800 775 465

 projects@transport.nsw.gov.au

 www.transport.nsw.gov.au/mtms

Translation



If you require the services of an interpreter, please contact the Translating and Interpreting Service on 131 450 and ask them to contact Transport for NSW on (02) 9200 0200.

An interpreter will assist you with translation.