

# More Trains, More Services

## Wollongong Stabling Yard and Platform Extension Project

**Over the next ten years the More Trains, More Services program will simplify and modernise the rail network. The program aims to provide more frequent train services, with less wait times and a more comfortable journey.**

### Project update

Improvements are being made at Wollongong station including extensions to the platforms, new tracks and stabling yard upgrades to accommodate the New Intercity Fleet. The new 10-car trains will provide an improved level of comfort, convenience and reliability for customers and will be introduced progressively starting with the Central Coast and Newcastle line later this year, followed by the Blue Mountains Line and the South Coast Line.

This work is expected to take two years to complete and we are committed to working closely with our customers, local residents, businesses and station staff during construction.

Construction has started and last month we completed geotechnical investigations and site survey inside the rail corridor.

### Work we are doing to improve the station for customers and our staff

The work we are undertaking includes:

- extending the platforms by about 9 metres at the southern end to accommodate the longer fleet of intercity trains and provide access for customers to all carriages of the train
- relocating the platform fences, stairs and gates to the end of the newly extended platforms
- realigning and installing new overhead wiring and signalling equipment so the trains can operate safely and efficiently
- improving safety on the platforms by upgrading lighting, closed circuit television, passenger announcement systems, tactile paving and line marking as required by the platform extension.

### What is happening in September?

We are continuing to deliver projects across NSW while ensuring the safety of all staff and the community. In line with current Australian Government guidelines around slowing the spread of Coronavirus and social distancing, all work will be carried out at a safe physical distance where possible and necessary hygiene practices will be observed.

Activities being undertaken in September include:

- vegetation removal within the corridor to enable earthworks
- cable route investigation and signalling surveys
- pre-construction site preparation.

## Construction hours

This month work will be undertaken during standard construction hours:

- **Monday to Friday** between 7am and 6pm
- **Saturday** between 8am and 1pm.

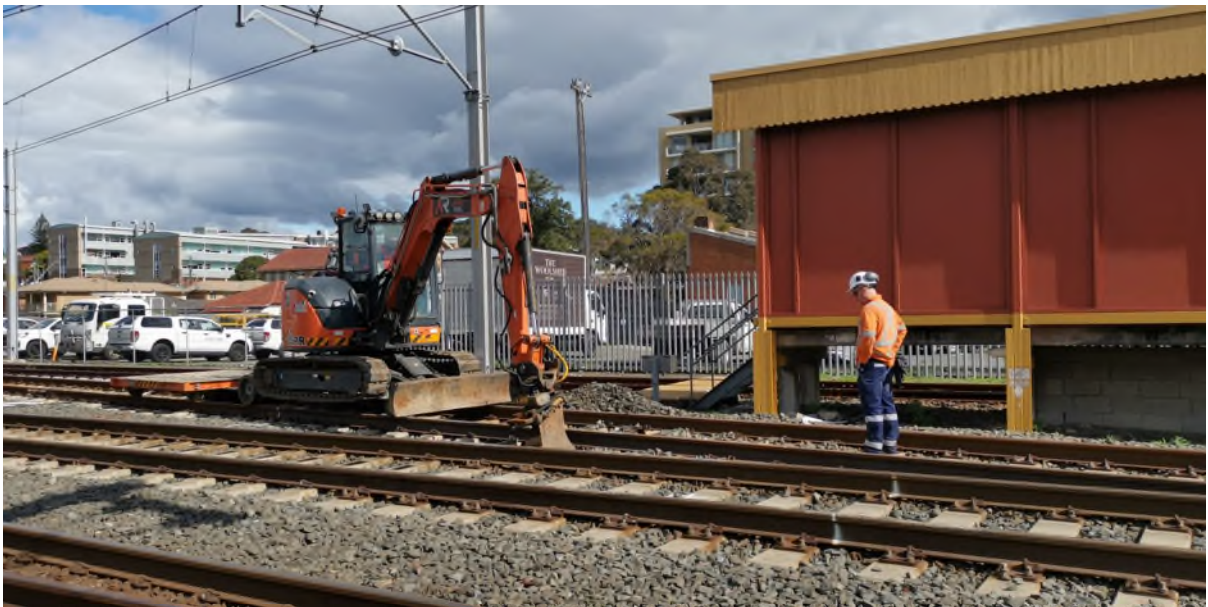
## Contact us

Last month we asked you to tell us how you would like to be keep updated about the project.

If you would like to share your feedback or subscribe to the project email distribution list please:

- call: **1800 684 490**
- email: **projects@transport.nsw.gov.au**
- visit **yoursay.transport.nsw.gov.au/mtms-wollongong**

For urgent enquiries or complaints regarding construction activities, please call our **24/7 Construction Response Line on 1800 775 465**.



*Work within the rail corridor at Wollongong Station*



This document contains important information about public transport projects in your area. If you require the services of an interpreter, please contact the Translating and Interpreting Service on **131 450** and ask them to call Transport for NSW on **(02) 9200 0200**. The interpreter will then assist you with translation.

For more information call **1800 684 490**, email **projects@transport.nsw.gov.au** or visit **transport.nsw.gov.au/mtms**  
For urgent enquiries or complaints regarding construction activities, please call 24 hours **1800 775 465**