



Control of fishing, jumping or climbing from or on bridges

1) Purpose and intended outcomes

This policy is intended to ensure that the RTA fulfils its duty of care to protect the general public from the risk of harm arising from fishing, jumping or climbing from or on bridges (prohibited activities).

This policy should be read in conjunction with the *Roads (General) Regulation 2000* (Clauses 17, 38 and 41).

2) Policy statement

The Roads and Traffic Authority (RTA) will take all reasonable steps to minimise the danger to the public arising from fishing, jumping or climbing from or on its bridge assets. Where these prohibited activities are known to occur at a bridge site, the RTA will undertake assessment of the bridge site in accordance with this policy to identify and prioritise appropriate treatments. The RTA will also assess the likelihood of prohibited activities at new bridge sites during the planning process and implement appropriate treatments.

The erection of warning signs and/or physical management control measures will be provided at locations identified under this policy in priority order based on funding availability. As far as practical the signs will use pictographs to indicate the prohibited activities and will also warn of the hazards encountered by undertaking the prohibited activity.

When necessary, the RTA will also liaise with police, local government and other agencies regarding enforcement and education activities.

3) Scope and coverage

This policy applies to all new and existing bridges, excluding bridge sized culverts.

It specifically excludes the risk to motorists from objects being intentionally thrown from overbridges onto traffic passing underneath. For guidance on this matter refer to the *Policy for safety screening of bridges (TD2002/02)*.

Within the Infrastructure Maintenance (IM) management system this policy is referred to as *IM-POL-501*.

4) Background

There have been incidents where persons have injured themselves and others by fishing, jumping or climbing from or on bridges.

The RTA has erected prohibition signs on some bridges to inform the public of such prohibited activities. However, the signs provided at these locations do not usually include pictograms indicating the prohibited activity.

Other than on a small number of bridges, there are no physical barriers to prevent the above prohibited activities.

5) Responsibilities and/or delegations

Assessment for new bridges: Project Services Manager.

Action required during the planning process to manage prohibited activity needs to be considered within the framework of the policy: *Project handover: Considering asset management implications during the project life cycle (PN046: IM-POL-101).*

Assessment for existing bridges: Regional Bridge Maintenance Planners.

Inform police and council in writing for enforcement and possible education measures: Regional Managers.

Approve erection of signposting: Regional Asset Managers.

Statewide prioritisation of physical measures to prevent jumping and record keeping: Bridge Strategy Manager (IM).

Bridge Strategy Manager (IM) is responsible for keeping records of state wide prioritisation of physical measures and estimates for the same. Regional Asset Managers to submit proposals to Infrastructure Maintenance Branch.

6) Procedure or guidelines

Appendix A includes procedure for the assessment of bridge sites.

Appendix B includes some examples of control measures. Sign designs are provided in *Appendix C*.

7) Evaluation

The effectiveness of this policy will be evaluated by way of audit. The audit methodology will consider application of the policy and the level of compliance by the public.

The evaluation will include measuring the effectiveness of this policy and its associated procedures.

8) Quality records

Background and associated records are located on the following files:

Record:	File number
This policy statement	5M348I
Development of this policy statement	06M2591/I
Assessment of existing bridges	Regional bridge file
Assessment of new bridges	Relevant project file

9) Definitions

Nil.

10) Additional Information

Reference documents:

- *AS 1319-1994: Safety signs for the occupational environment*
- *Dederer v Roads and Traffic Authority & anor, NSW Supreme Court 2005*
- *Policy for safety screening of bridges (TD2002/02).*
- *Project handover: Considering asset management implications during the project life cycle (PN046: IM-POL-101).*
- *Roads (General) Regulation 2000*

Effective date: 13 July 2007

Review date: 3 years after the 'Effective date'

Policy replaces: Nil

11) Appendices

Appendix A – Procedure for assessment of bridges

Appendix B – Control measures.

Appendix C – Sign drawings.

Approved by:

Michael Bushby

Director Network Management



Further information:

Policy and Strategy Section

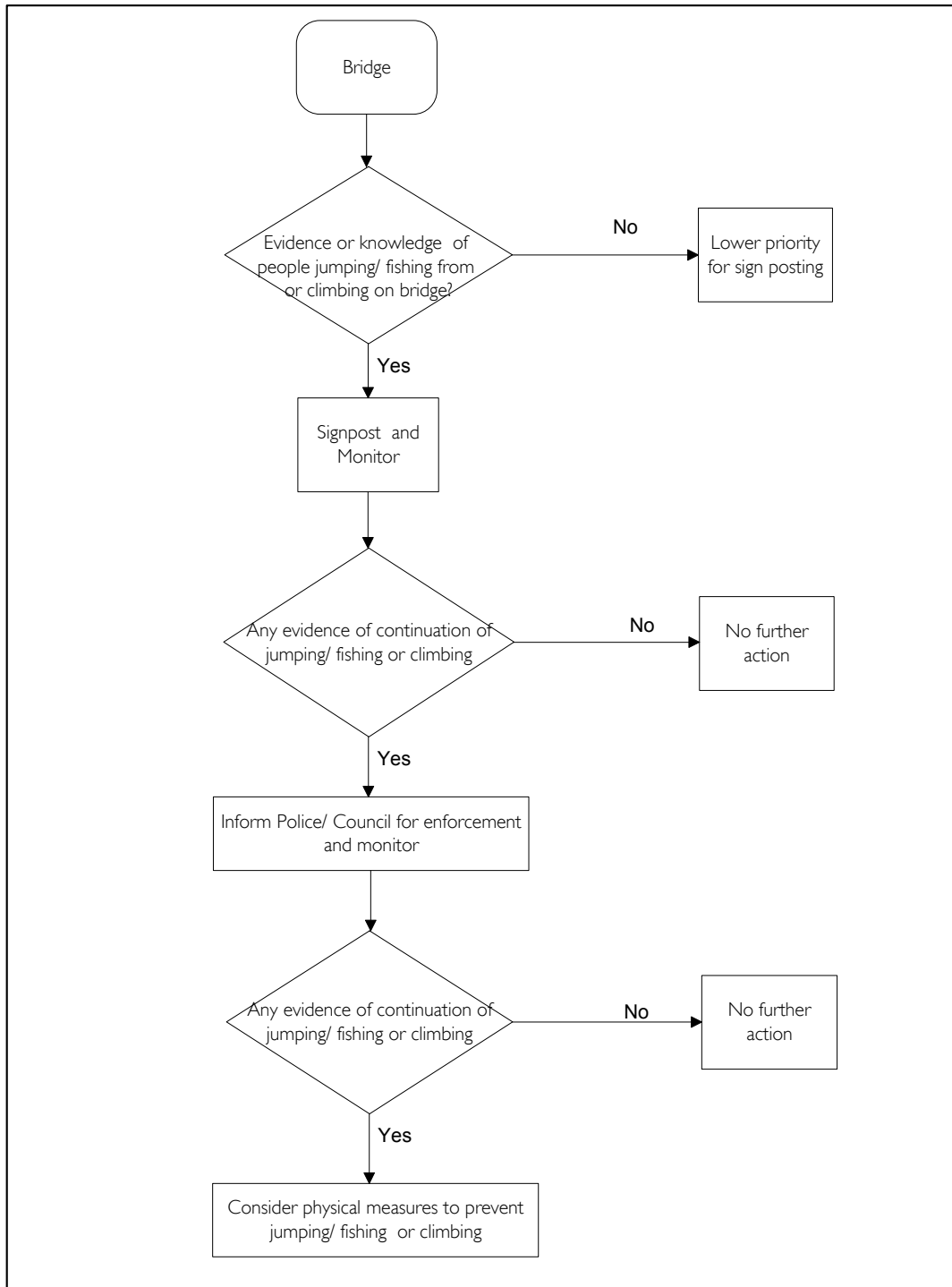
Tel: 9218 6700

Fax: 9218 6765

<http://home.rta.nsw.gov.au/org/directoratesandbranches/tt/infm/index.html>

Appendix A – Procedure for assessment of bridges

AI) Existing bridges - Jumping or fishing from or climbing on bridge



A2) New bridges

For new bridges it is necessary to establish the need for signage and/or physical barriers based on the location of the bridge as a history of prohibited activity has not yet been established.

The *Table A1* provides guidance for deciding on what initial action should be taken when building a new bridge. Once the bridge is built, it should follow the procedure outlined in section A1 above and take further action as necessary.

Table A1 – Possible initial action for new bridges

Bridge location	Possible initial action	
	Jumping, diving and climbing	Fishing
Near (< 200 m) school or holiday/caravan park	Sign post and consider physical barrier	Sign post
Near (< 200 m) open public space for water access	Sign post	-
Holiday location	Sign post	Sign post
Near swimming hole/beach	Sign post	-
Near (< 200 m) hotel, club or amusement centre	Sign post	-

Appendix B – Control measures

B1) Signage

RTA sign numbers R6-254 to R6-254-4 are given in *Appendix C*. The signs indicate the extent of activities prohibited and the reason why the activity is prohibited.

In addition to the erection of larger signs (sign R6-2540) at each end of the bridge, it is recommended that repeater signs (signs R6-254-1 to R6-254-4), as appropriate, be displayed at the specific locations of the prohibited activity. The content of the signs should be adapted to each site and based on actual circumstances.

B2) Physical management control measures

Physical management control measures to reduce the incidence of an event include:

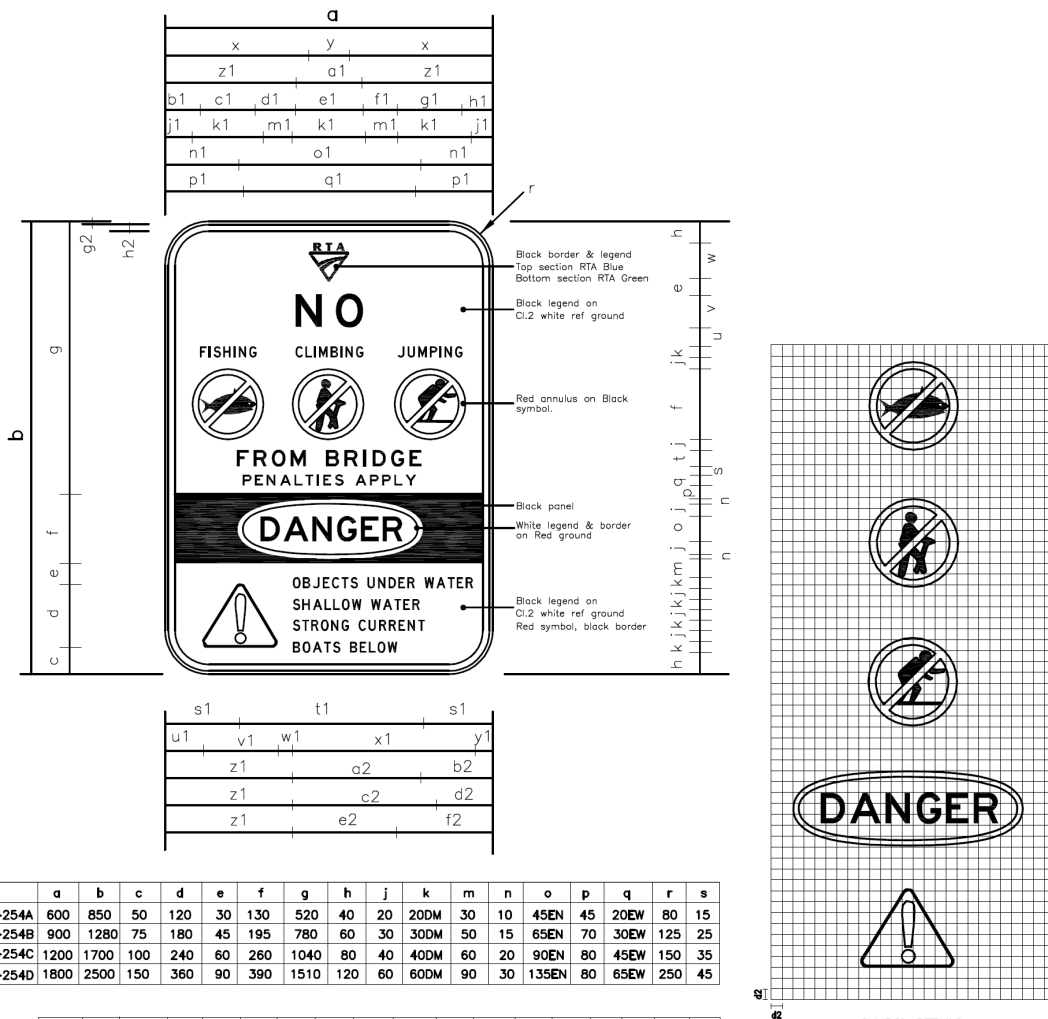
- .1 “Crown of thorn” spikes around the base of the end diagonals of truss bridges.
- .2 Steel angles fitted to the top of hand railing to deter jumpers/divers.
- .3 Vertical balusters in railings.
- .4 Increasing the height of railings.
- .5 Barbed wire at strategic locations.
- .6 Full height screens or barriers.
- .7 Security cameras and video recorders.
- .8 Anti-climb paint (paint that remains thick and non-drying). Should only be used after consultation by the Manager, Durability and Protection).
- .9 Modifying the bridge design.

Figure B1 Possible physical management control measures



Appendix – C – Sign layout

R6-254



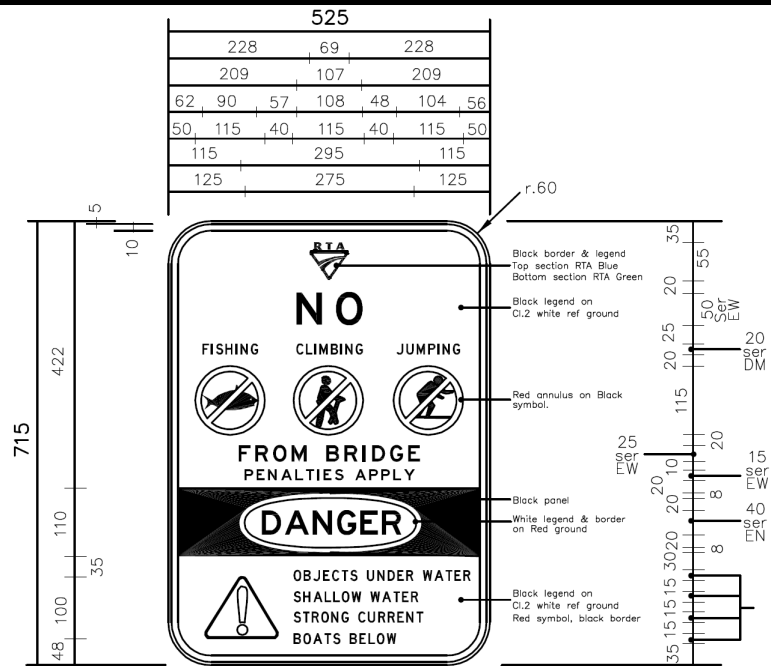
	a	b	c	d	e	f	g	h	j	k	m	n	o	p	q	r	s
R6-254A	600	850	50	120	30	130	520	40	20	20DM	30	10	45EN	45	20EW	80	15
R6-254B	900	1280	75	180	45	195	780	60	30	30DM	50	15	65EN	70	30EW	125	25
R6-254C	1200	1700	100	240	60	260	1040	80	40	40DM	60	20	90EN	80	45EW	150	35
R6-254D	1800	2500	150	360	90	390	1510	120	60	60DM	90	30	135EN	80	65EW	250	45

t	u	v	w	x	y	z	a1	b1	c1	d1	e1	f1	g1	h1	j1	k1	m1
30EW	35	60EM	70	263	74	230	140	64	103	72	123	64	117	57	50	130	55
45EW	50	90EM	105	395	110	345	210	96	155	107	185	91	176	92	75	196	81
60EW	70	120EM	140	526	148	460	280	127	206	394	246	370	234	123	100	260	110
90EW	105	180EM	210	789	222	690	420	190	309	567	369	529	351	185	150	390	165

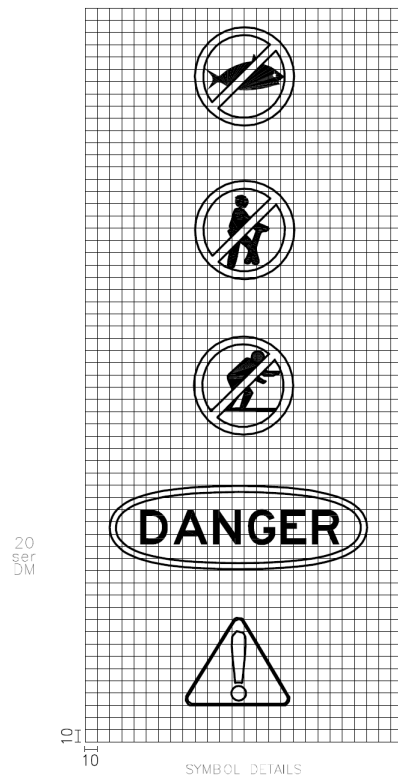
n1	o1	p1	q1	s1	t1	u1	v1	w1	x1	y1	z1	a2	b2	c2	d2	e2	f2	g2	h2
128	344	142	316	130	340	68	132	40	330	102	240	232	128	258	102	190	170	6	12
192	516	211	478	196	508	102	190	60	494	153	360	348	192	387	153	285	255	8	16
256	688	243	714	260	680	136	264	80	660	204	480	464	256	516	204	380	340	10	20
384	1032	384	1032	390	1020	204	396	120	990	305	720	696	384	774	305	570	510	12	24

SCALE 1:120

<p>TITLE</p> <h2 style="text-align: center;">REGULATORY SIGN</h2> <h3 style="text-align: center;">R6-254</h3>	Date: 1/03/07	
	Checked:	
	Drawn: VP/FR	
	Revision: 1	
File (Sign) K:\TTT\DRAWINGS\PLOT\REGULAT\R6-254.dwg		

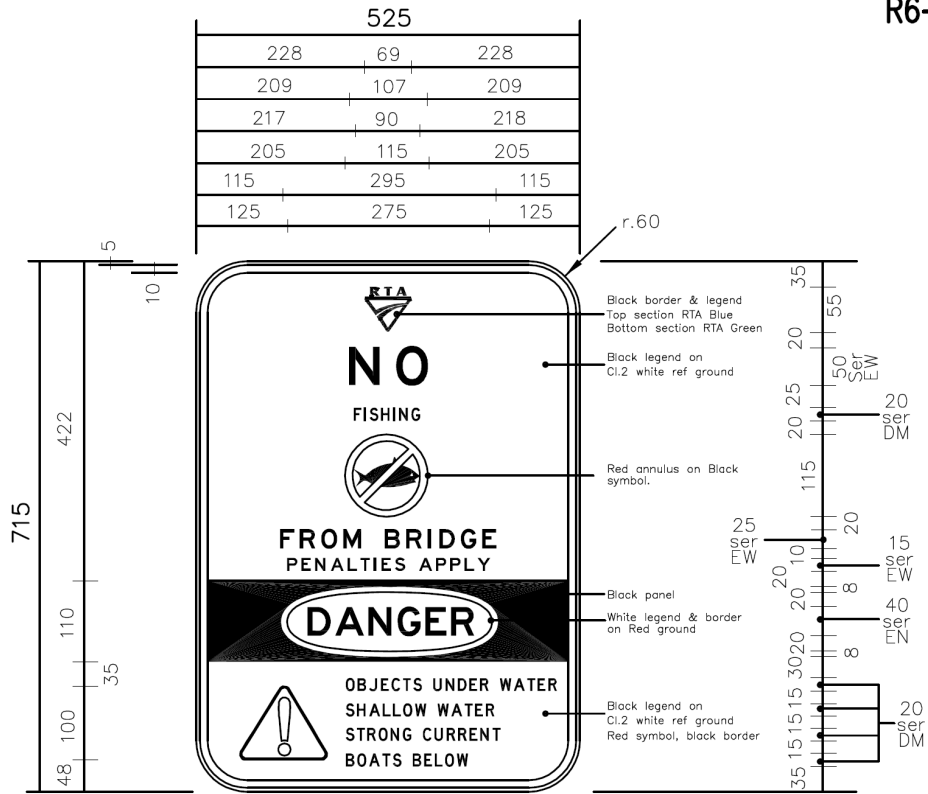


115	295	115
57	120	24
201	202	122
201	212	112
201	166	158

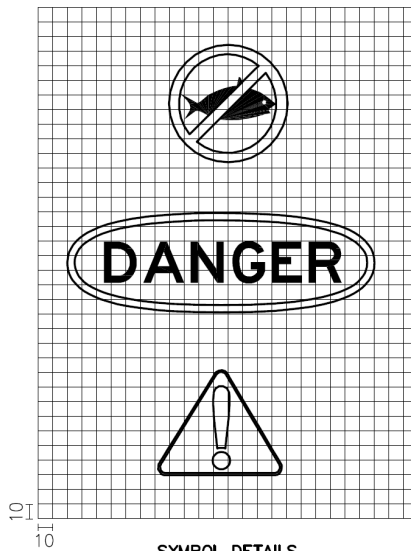


SCALE 1:12

<p>TITLE</p> <p style="text-align: center;">REGULATORY SIGN</p> <p style="text-align: center;">R6-254-1</p>	Date: 19/06/07	
	Checked:	
	Drawn: VP	
	Revision:	
<p>File (Sign) K:\TTT\DRAWINGS\PLOT\REGULAT\R6-254-1.dwg</p>		



115	295	115
57	120	24
201	202	122
201	212	112
201	166	158



SYMBOL DETAILS

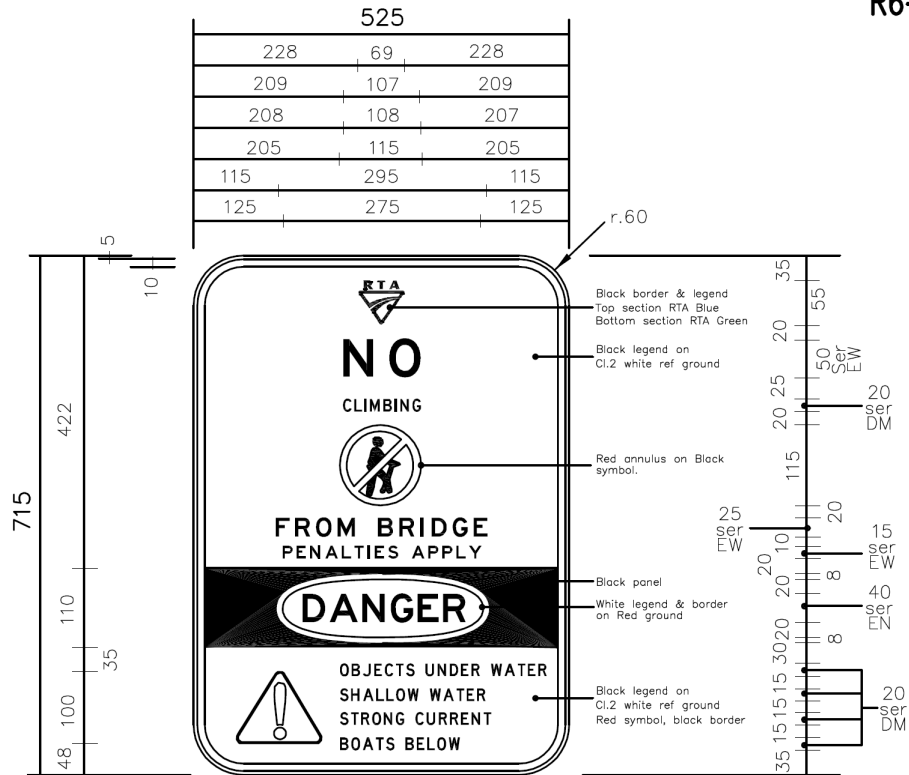
SCALE 1:10

TITLE
REGULATORY SIGN
R6-254-2

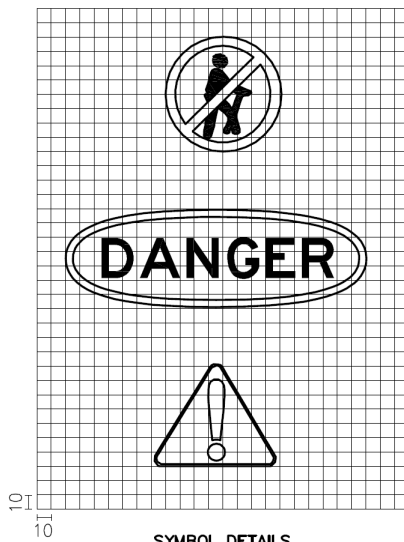
Date: 19/06/07
 Checked:
 Drawn: VP
 Revision:



File (Sign) K:\ITT\DRAWINGS\PLOT\REGULAT\R6-254-2.dwg



115	295	115
57	120	24
	292	32
201	202	122
201	212	112
201	166	158



SYMBOL DETAILS

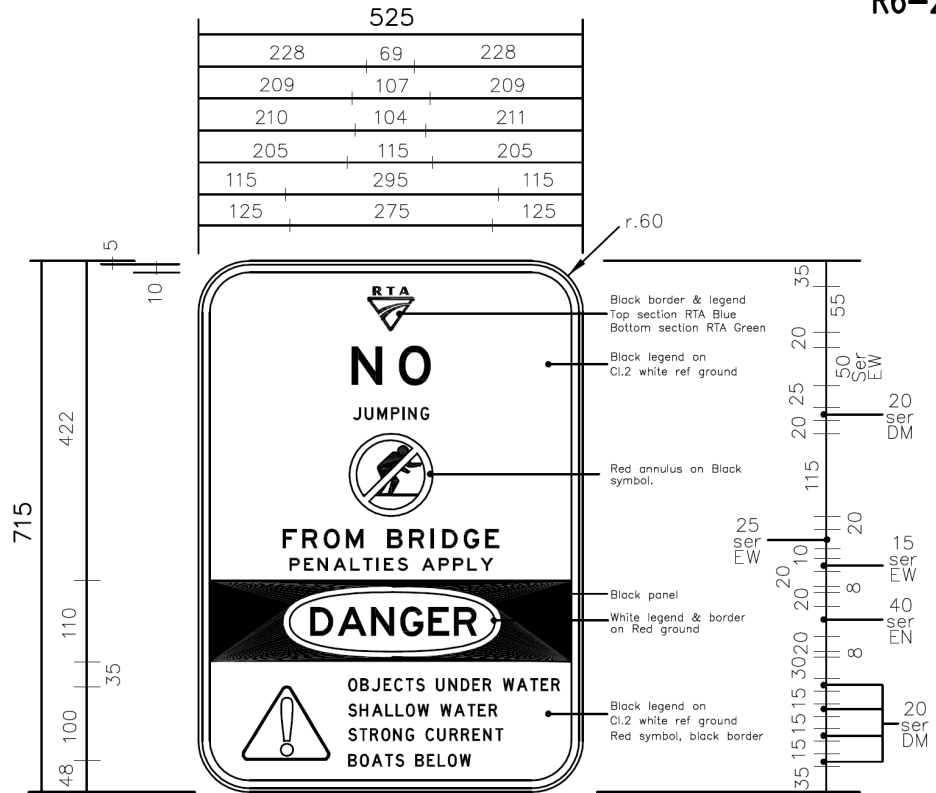
SCALE 1:10

TITLE	<h1>REGULATORY SIGN</h1> <h2>R6-254-3</h2>
Date:	
Checked:	
Drawn:	

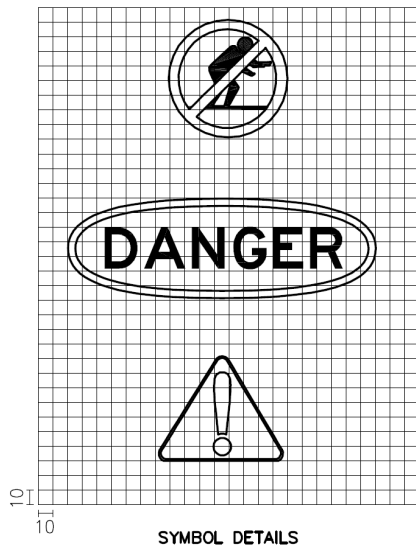
Date:	19/06/07
Checked:	
Drawn:	VP
Revision:	



File (Sign) K:\TTT\DRAWINGS\PLOT\REGULAT\R6-254-3.dwg



115	295	115
57	120	24
201	202	122
201	212	112
201	166	158



SCALE 1:10

TITLE

REGULATORY SIGN

R6-254-4

Date: 19/06/07

Checked:

Drawn: VP

Revision:



File (Sign) K:\TTT\DRAWINGS\PLOT\REGULAT\R6-254-4.dwg