

DC Feeder Upgrade Project – Central Station

Power Supply Upgrade

September 2023



Transport for NSW acknowledges the Gadigal people of the Eora Nation as the Traditional Custodians of the lands on which we work and pay respects to Elders past and present.

Transport for NSW is making improvements to electrical infrastructure to meet expected power requirements for Sydney's future rail network and new fleet of air-conditioned trains. As part of this, Transport for NSW is carrying out power supply upgrade work through our DC Feeder Upgrade Project.

What work are we doing?

The DC Feeder Upgrade Project will improve power delivery to the railway across a number of sites on the rail network, including Central Station.

In September 2023 we will:

- remove redundant cables and install new cables
- work on electrical infrastructure such as overhead wiring and metal fixings
- deliver oversized rail infrastructure to the site access point on Chalmers Street.

When and where we'll be working

Standard construction hours are **7am to 6pm Monday to Friday and 8am to 1pm on Saturdays**.

We will be working inside the rail corridor at Central Station and will use the site access points on Regent Street and Chalmers Street for deliveries of material and equipment.

Out of hours deliveries and work

There will be several oversized out-of-hours deliveries made via the access bridge off Regent Street and at the Chalmers Street access point between **9pm and 5am from Thursday 7 September to Thursday 21 September 2023**.

The map overleaf shows the site access points.

For safety reasons, work inside the rail corridor will take place outside of standard construction hours when no trains are running from:

- **10pm Friday 8 September to 2am Monday 11 September 2023**
- **10pm Friday 15 September through to 2am Monday 18 September 2023.**

What will this mean for you?

There will be **traffic changes on Chalmers Street** (between Belvoir and Devonshire streets) **between 9pm and 5am from Tuesday 12 September to Thursday 21 September 2023** to allow oversized deliveries to access the work area.

Traffic changes include:

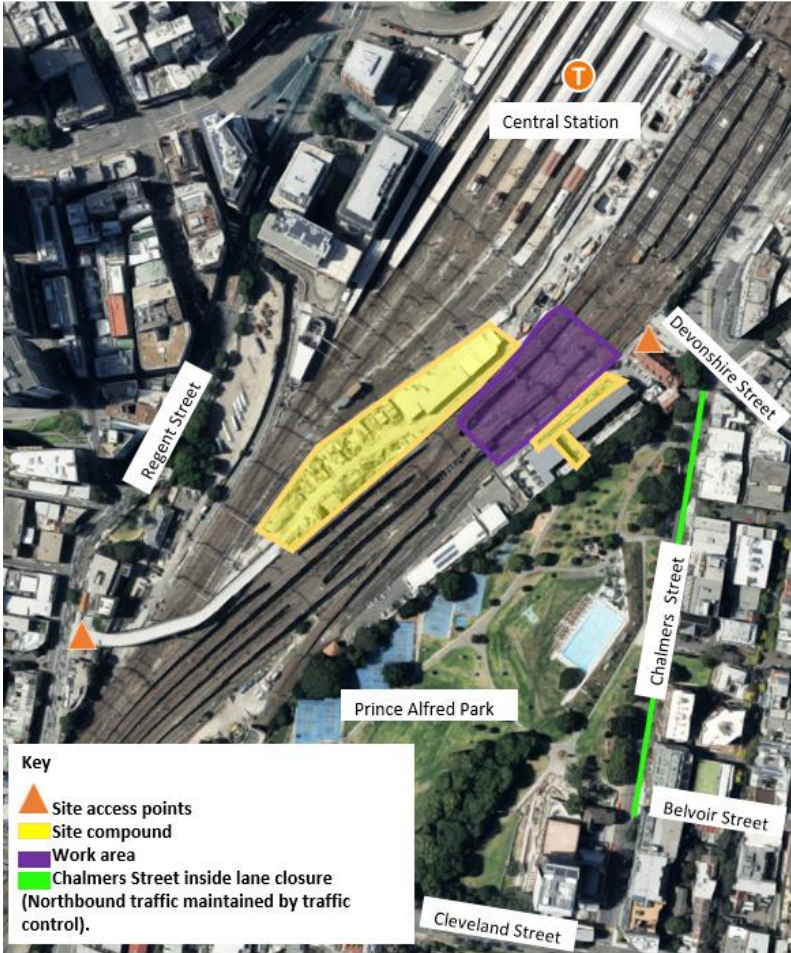
- the inside lane travelling northbound along Chalmers Street will be closed during the times outlined above
- traffic control will direct motorists to merge into the open northbound lane. Please refer to the map overleaf.

You may also notice:

- workers and vehicles in and near the work area
- noise from machinery and equipment.



Location of work



There's a lot happening

Currently there are multiple project teams, transport agencies and contractors working within the rail corridor. For more information on work being completed by Sydney Trains, please phone 1300 656 999 or visit www.transport.nsw.gov.au/sydtraincommunity

Managing our impacts

We'll seek to minimise impacts as much as possible and adhere to strict environmental conditions relating to noise, vibration and dust management.

Contact us



Project Infoline **1800 684 490**

24 Hour Construction

Response Line: **1800 775 465**



Projects@transport.nsw.gov.au



Visit transport.nsw.gov.au



Interpreter service

For languages other than English call 131 450
Arabic • Cantonese • Hindi • Mandarin • Vietnamese

لطلب خدمة الترجمة الشفهية للغات غير الإنجليزية اتصل بالرقم
131 450

獲取英語以外的其他語言傳譯協助服務可以致電**131 450**

अंग्रेज़ी के अतिरिक्त अन्य भाषाओं के लिए दुभाषिया सेवा **131 450**
पर कॉल करें

获取英语以外的其他语言口译协助服务可以致电**131 450**

Để có dịch vụ thông ngôn cho các ngôn ngữ khác tiếng Anh,
gọi số **131 450**



Subscribe for updates at projects@transport.nsw.gov.au

www.transport.nsw.gov.au/privacy-statement#Your_Privacy